

GENERAL CONTRACTOR

STRUCTURAL ENGINEER

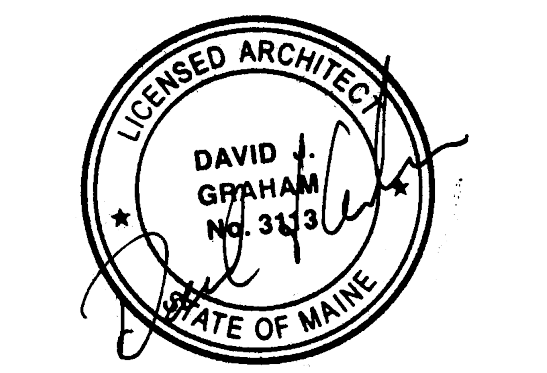
MEP ENGINEER

CLIENT

Spurwink Services  
 899 Riverside Street  
 Portland, ME 04103

PROJECT  
**Spurwink Services**

901 Washington Ave.  
 Portland, ME 04101



ISSUED FOR PERMIT

INFORMATION:

Path: M:/boulos/spurwink

Issue Date: 07.24.14

Drawn By: djg

Checked By: djg

Revision:

- 1.
- 2.
- 3.
- 4.

TITLE

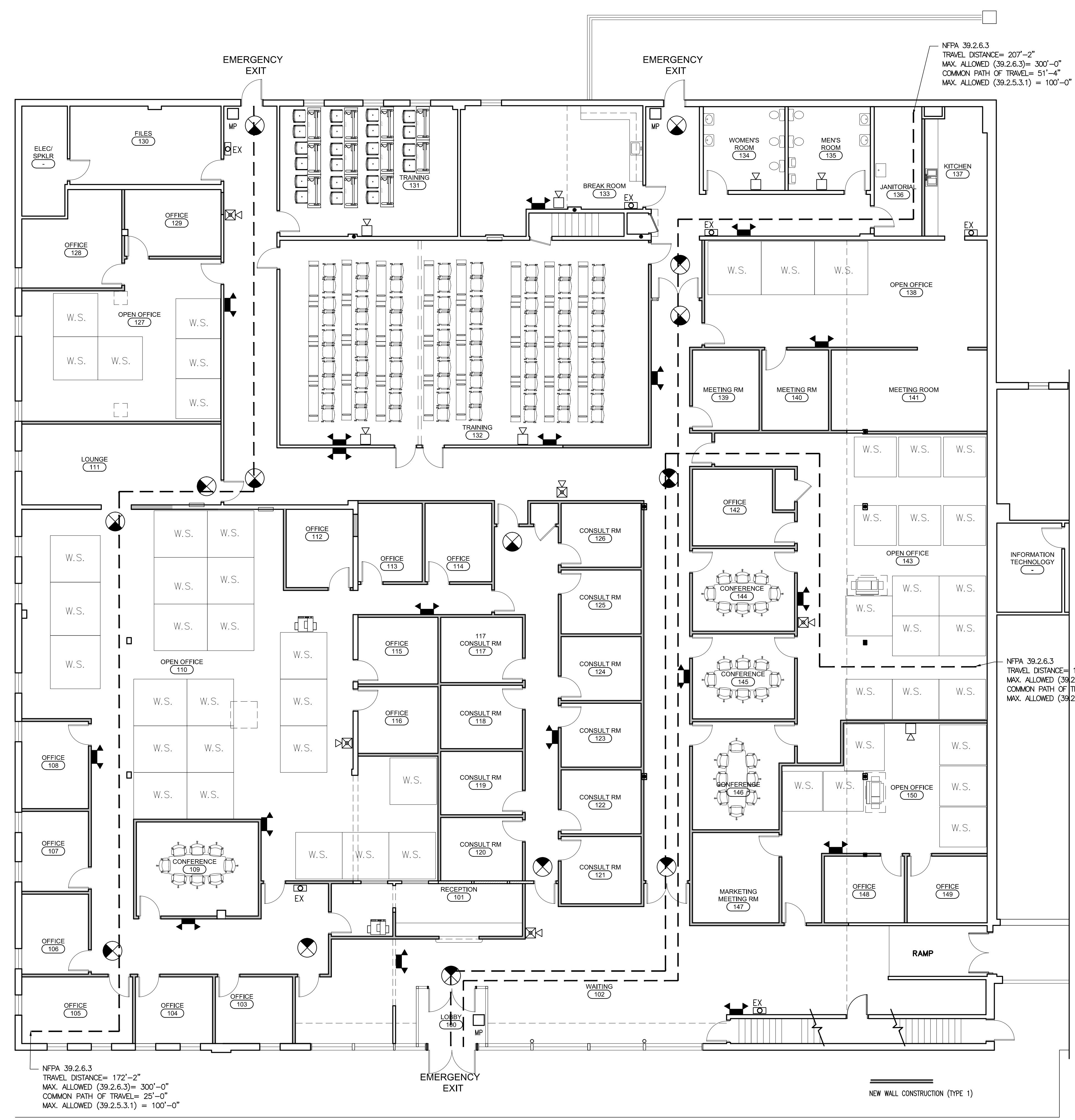
LIFE SAFETY PLAN AND CODE INFORMATION

SCALE

1/8"=1'-0"

© 2014 Graham Architects. All rights reserved. Information, material, and designs in this document are proprietary to and owned by Graham Architects and may not be disclosed to any third party, reproduced, posted on a global computer information network, or distributed in any way without the written consent from Graham Architects.

**FP-1**



NFPA 39.2.6.3  
 TRAVEL DISTANCE= 172'-2"  
 MAX. ALLOWED (39.2.6.3)= 300'-0"  
 COMMON PATH OF TRAVEL= 25'-0"  
 MAX. ALLOWED (39.2.5.3.1) = 100'-0"

NFPA 39.2.6.3  
 TRAVEL DISTANCE= 207'-2"  
 MAX. ALLOWED (39.2.6.3)= 300'-0"  
 COMMON PATH OF TRAVEL= 51'-4"  
 MAX. ALLOWED (39.2.5.3.1) = 100'-0"

NFPA 39.2.6.3  
 TRAVEL DISTANCE= 199'-2"  
 MAX. ALLOWED (39.2.6.3)= 300'-0"  
 COMMON PATH OF TRAVEL= 76'-8"  
 MAX. ALLOWED (39.2.5.3.1) = 100'-0"

PROJECT DATA			
USE	BUSINESS (B)		
OCCUPANCY CLASSIFICATION	NFPA CHAPTER 36 NEW MERCHANTILE OCCUPANCIES		
OCCUPANCY CALCULATION			
GROSS S.F. AREA OF RENOVATION	20,140 S.F.	20,140/100	201.4
	CALCULATED OCCUPANT LOAD: 201.4		
EXITS AND EXIT ACCESS DOORWAYS			
	REQUIRED	PROVIDED	IBC 2009 101.5.1
EXITS	2	3	
DOOR WIDTH	32" MINIMUM	72" & 36"	
COMMON PATH OF TRAVEL	100'-0"	8'-10"	
EXIT ACCESS TRAVEL DISTANCE (WITH SPRINKLERS)	300'-0" (NFPA)	56'-0"	300 FEET PER IBC 2009 TABLE 1016.1, NFPA 39.2.6.3
DEAD END CORRIDORS	50'-0"	NA	
BUILDING ELEMENT - FIRE RESISTANCE RATING			
STRUCTURAL FRAME			
INCLUDING COLUMNS, GIRDERS, TRUSSES	2	Existing No Change	
BEARING WALLS			
EXTERIOR	2	Existing No Change	
INTERIOR	2	Existing No Change	
NON BEARING WALLS AND PARTITIONS			
EXTERIOR	0	Existing No Change	
INTERIOR	0	Existing No Change	
FLOOR CONSTRUCTION			
INCLUDING SUPPORTING BEAMS & JOISTS	2	Existing No Change	
ROOF CONSTRUCTION			
INCLUDING SUPPORTING BEAMS & JOISTS	1	Existing No Change	
BUILDING HEIGHTS AND AREAS			
AREA	UL	20,140 S.F.	SF INCLUDES AREA OF PROPOSED RENOVATION
HEIGHTS			
STORIES	11 STORIES	1.5 STORIES	
EGRESS WIDTH:			
OCCUPANTS x (0.2 - OTHER EGRESS COMPONENTS)			
201 x 0.2 = 40.2" WIDTH REQUIRED	40"	72"	
PLUMBING FIXTURES			
WATER CLOSETS - MEN/WOMEN	3	3	
LAVATORIES - MEN/WOMEN	1	2	
UTILITY SINK	1	1	
SPRINKLER			
EXISTING MONITORED SYSTEM	Existing No Change	Existing No Change	

**3 NTS CODE SUMMARY**

LIFE SAFETY SYSTEM LEGEND	
	DIRECTIONAL EXIT LIGHT
	AUTOMATIC EMERGENCY LIGHT
	FIRE EXTINGUISHER - RECESSED CABINET
	STROBE DEVICE, MAX 96" ABOVE FLOOR
	HORN AND STROBE DEVICE, MAX 96" ABOVE FLOOR
	MAUAL PULL STATION

**NOTE:**  
 COORDINATE THE REMOVAL AND RELOCATION OF EXISTING LIFE SAFETY EQUIPMENT. G.C. TO SUPPLY ADDITIONAL EQUIPMENT AS REQUIRED TO COMPLETE THE SCOPE OF THE DESIGN.

**2 NTS LEGEND**

**1 1/8"=1'-0" EGRESS PLAN**

DO NOT SCALE DRAWINGS