

GENERAL CONTRACTOR

STRUCTURAL ENGINEER

MEP ENGINEER

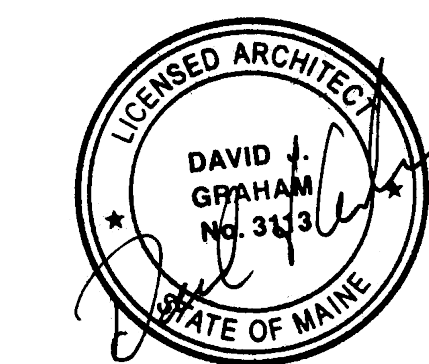
CLIENT

Spurwink Services
 899 Riverside Street
 Portland, ME 04103

PROJECT

Spurwink Services

901 Washington Ave.
 Portland, ME 04101



ISSUED FOR PERMIT

INFORMATION

Path: M:/boulos/spurwink

Issue Date: 07.24.14

Drawn By: dijg

Checked By: dijg

Revision:

- 1.
- 2.
- 3.
- 4.

TITLE

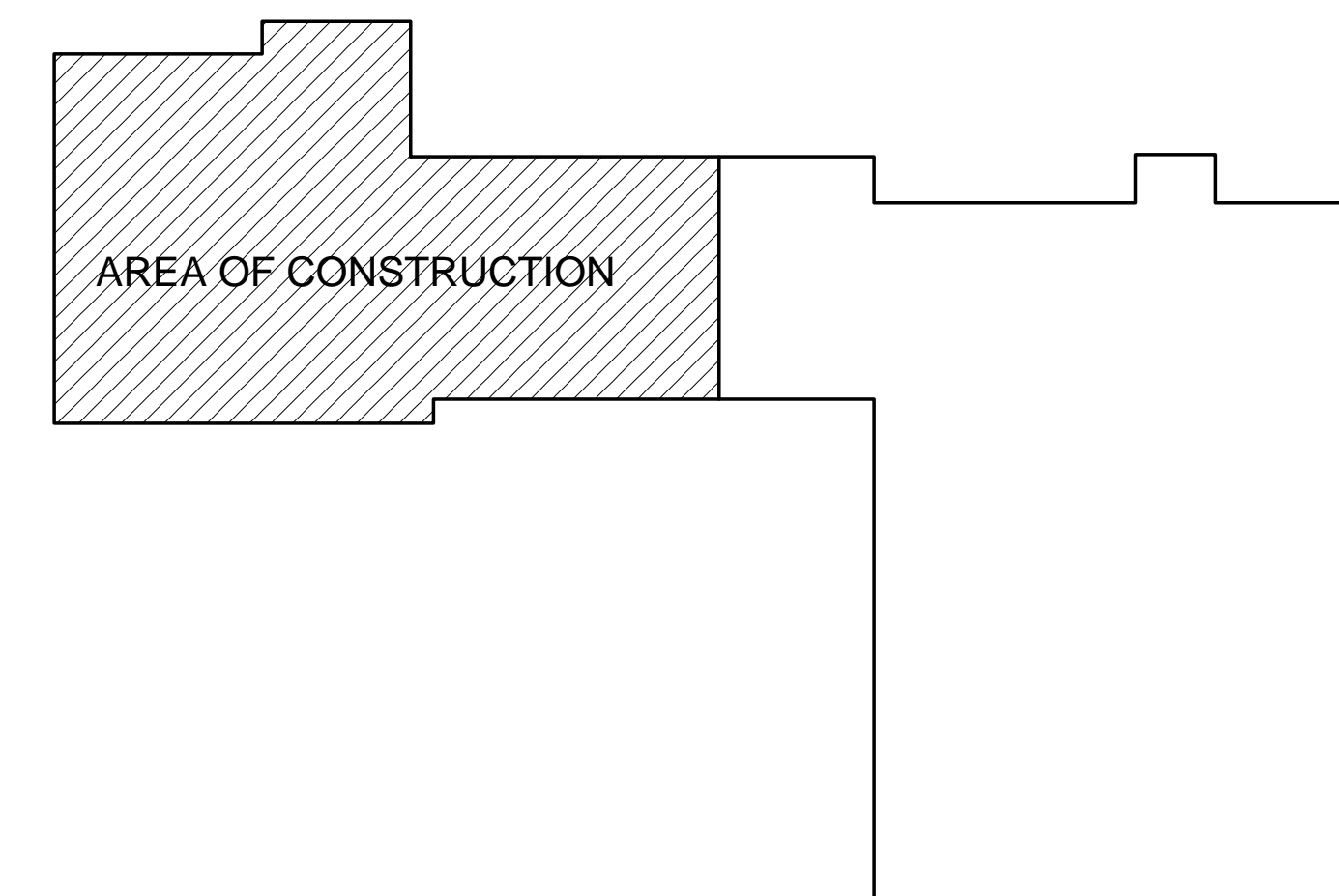
EXISTING
 CONDITIONS PLAN

SCALE

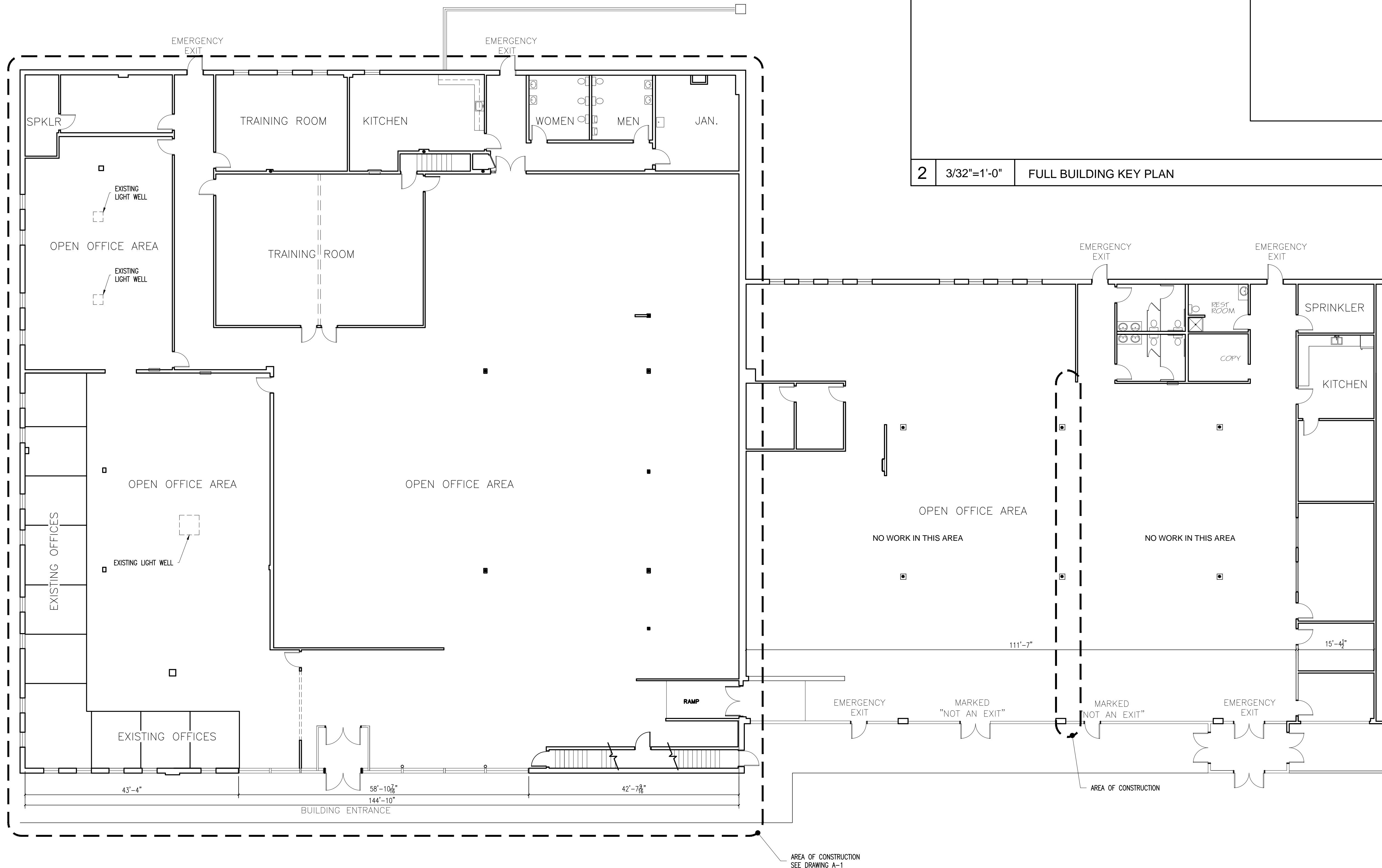
3/32"=1'-0"

© 2014 Graham Architects. All rights reserved.
 Information, material, and designs in this document are
 proprietary to and owned by Graham Architects, and
 may not be disclosed to any third party, reproduced,
 posted on a global computer information network, or
 distributed in any way without the written consent from
 Graham Architects.

EX-1



2 3/32"=1'-0" FULL BUILDING KEY PLAN



1 3/32"=1'-0" EXISTING CONDITIONS PLAN

DO NOT SCALE DRAWINGS