

GENERAL CONTRACTOR

STRUCTURAL ENGINEER

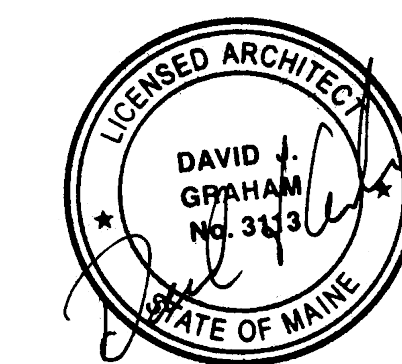
MEP ENGINEER

CLIENT

Spurwink Services
 899 Riverside Street
 Portland, ME 04103

PROJECT
Spurwink Services

901 Washington Ave.
 Portland, ME 04101



ISSUED FOR PERMIT

INFORMATION

Path: M:/boulos/spurwink

Issue Date: 07.24.14

Drawn By: dijg

Checked By: dijg

Revision:

- 1.
- 2.
- 3.
- 4.

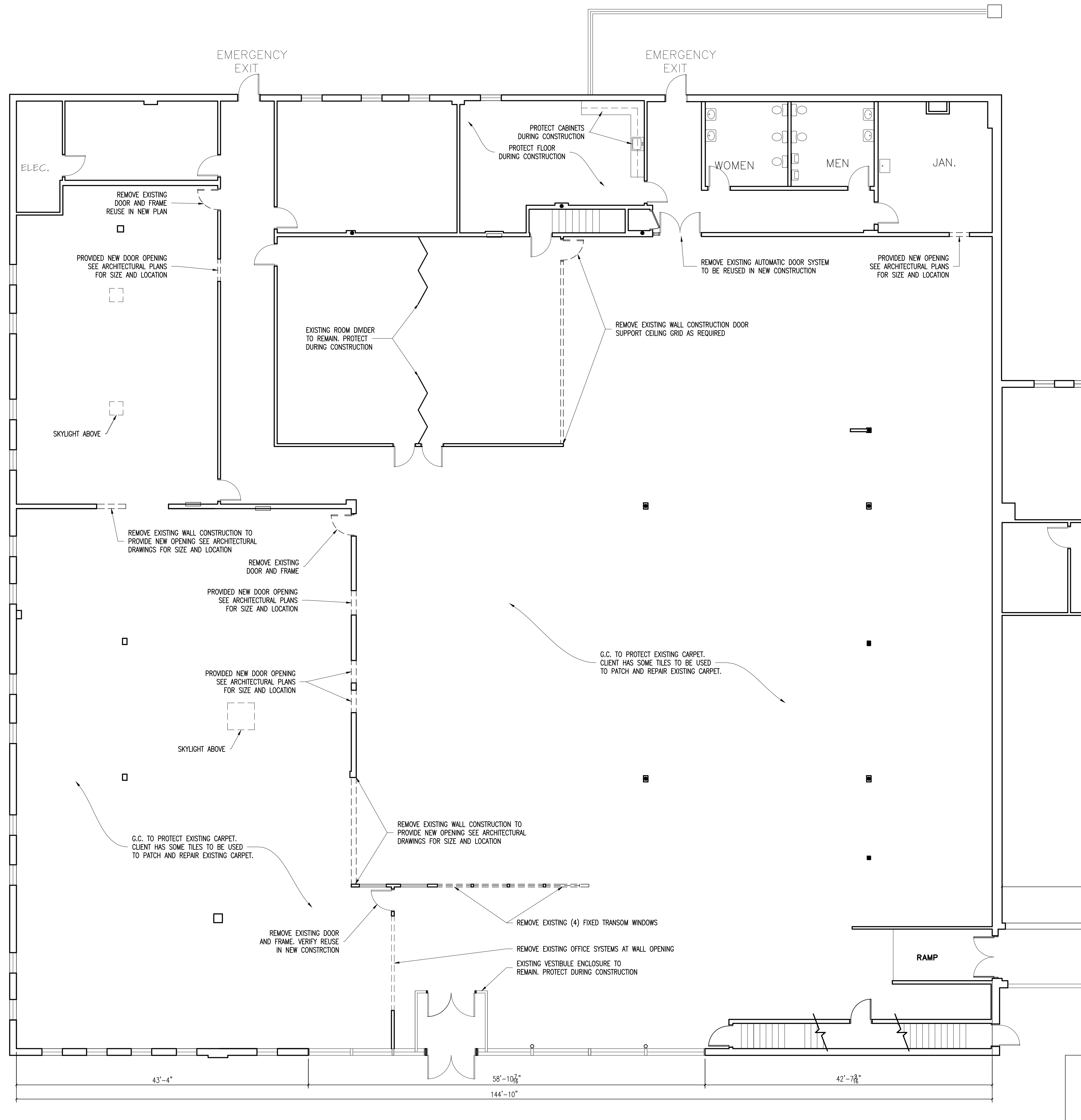
TITLE

DEMOLITION PLAN

SCALE

1/8"=1'-0"

© 2014 Graham Architects. All rights reserved. Information, material, and designs in this document are proprietary to and owned by Graham Architects and may not be disclosed to any third party, reproduced, posted on a global computer information network, or distributed in any way without the written consent from Graham Architects.



GENERAL DEMOLITIONS NOTES

1. G.C. SHALL REMOVE AND DISPOSE OF ALL HAZARDOUS MATERIALS IN ACCORDANCE WITH STATE AND LOCAL LAWS. ALL WORK SHALL BE PERFORMED BY A LICENSED ABATEMENT PROFESSIONAL. G.C. SHALL PROVIDE THE OWNER WITH ALL DOCUMENTS CERTIFYING THAT THE REMOVAL AND DISPOSAL MEETS ALL STATE AND LOCAL LAWS.
2. IF ANY QUESTIONS ARISE AS TO THE REMOVAL OF ANY MATERIAL, CLARIFY THE POINT WITH THE ARCHITECT BEFORE PROCEEDING.
3. CONTRACTOR TO STORE AND REMOVE ALL DEBRIS FROM SITE.

2

NTS

GENERAL DEMOLITION NOTES

1

1/8"=1'-0"

PARTIAL DEMOLITION PLAN

DO NOT SCALE DRAWINGS

D-1