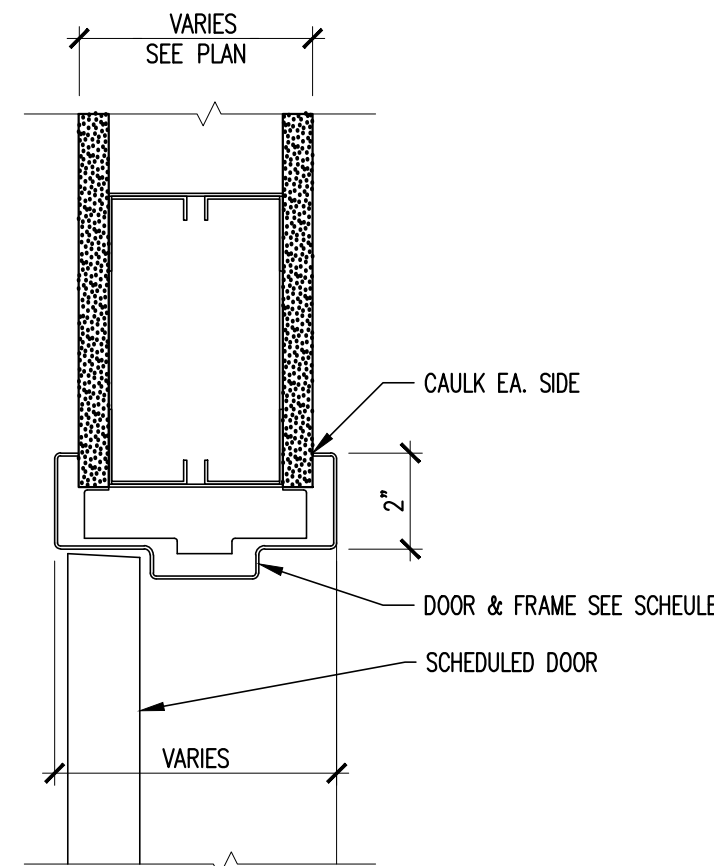


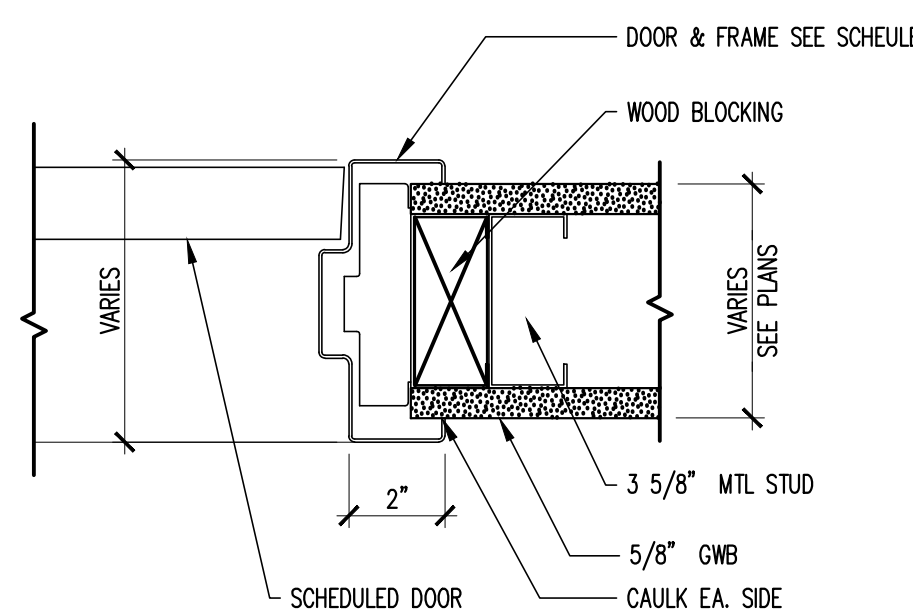
# DOOR SCHEDULE

DOOR NUMBER	DOOR			GLAZING	FRAME			HWS	FIRE RATING (MIN.)	REMARKS	
	SIZE	MATERIAL	ELEVATION		MATERIAL	ELEVATION	HEAD				JAMB
01	3'-0" x 7'-0" x 1-3/4"	SC/PT	FG	TEMP.	HM	1	5/A6	4/A6	-	TBD	-
02	3'-0" x 7'-0" x 1-3/4"	SC/PT	FG	TEMP.	HM	1	5/A6	4/A6	-	TBD	-
03	3'-0" x 7'-0" x 1-3/4"	SC/PT	FG	TEMP.	HM	1	5/A6	4/A6	-	TBD	-
04	3'-0" x 7'-0" x 1-3/4"	SC/PT	FG	TEMP.	HM	1	5/A6	4/A6	-	TBD	-
05	3'-0" x 7'-0" x 1-3/4"	SC/PT	FG	TEMP.	HM	1	5/A6	4/A6	-	TBD	-
06	3'-0" x 7'-0" x 1-3/4"	SC/PT	FG	TEMP.	HM	1	5/A6	4/A6	-	TBD	-
07	3'-0" x 7'-0" x 1-3/4"	SC/PT	FG	TEMP.	HM	1	5/A6	4/A6	-	TBD	-
08	3'-0" x 7'-0" x 1-3/4"	SC/PT	FG	TEMP.	HM	1	5/A6	4/A6	-	TBD	-
09	3'-0" x 7'-0" x 1-3/4"	SC/PT	FG	TEMP.	HM	1	5/A6	4/A6	-	TBD	-
10	3'-0" x 7'-0" x 1-3/4"	SC/PT	FG	TEMP.	HM	1	5/A6	4/A6	-	TBD	-
11	3'-0" x 7'-0" x 1-3/4"	SC/PT	SC	-	HM	1	5/A6	4/A6	-	TBD	-
12	3'-0" x 7'-0" x 1-3/4"	SC/PT	SC	-	HM	1	5/A6	4/A6	-	TBD	-
13	3'-0" x 7'-0" x 1-3/4"	SC/PT	FG	TEMP.	HM	1	5/A6	4/A6	-	TBD	JAMB DEPTH TO ALIGN EXISTING WALL CONSTRUCTION
14	3'-0" x 7'-0" x 1-3/4"	SC/PT	FG	TEMP.	HM	1	5/A6	4/A6	-	TBD	JAMB DEPTH TO ALIGN EXISTING WALL CONSTRUCTION
15	3'-0" x 7'-0" x 1-3/4"	SC/PT	FG	TEMP.	HM	1	5/A6	4/A6	-	TBD	-
16	3'-0" x 7'-0" x 1-3/4"	SC/PT	FG	TEMP.	HM	1	5/A6	4/A6	-	TBD	-
17	3'-0" x 7'-0" x 1-3/4"	SC/PT	FG	TEMP.	HM	1	5/A6	4/A6	-	TBD	-
18	3'-0" x 7'-0" x 1-3/4"	SC/PT	FG	TEMP.	HM	1	5/A6	4/A6	-	TBD	-
19	3'-0" x 7'-0" x 1-3/4"	SC/PT	SC	-	HM	1	5/A6	4/A6	-	TBD	-
20	3'-0" x 7'-0" x 1-3/4"	SC/PT	SC	-	HM	1	5/A6	4/A6	-	TBD	-
21	3'-0" x 7'-0" x 1-3/4"	SC/PT	SC	-	HM	1	5/A6	4/A6	-	TBD	-
22	3'-0" x 7'-0" x 1-3/4"	SC/PT	SC	-	HM	1	5/A6	4/A6	-	TBD	-
23	3'-0" x 7'-0" x 1-3/4"	SC/PT	V	TEMP.	HM	1	5/A6	4/A6	-	TBD	-
24	3'-0" x 7'-0" x 1-3/4"	SC/PT	SC	-	HM	1	5/A6	4/A6	-	TBD	-
25	3'-0" x 7'-0" x 1-3/4"	SC/PT	SC	-	HM	1	5/A6	4/A6	-	TBD	-
26	3'-0" x 7'-0" x 1-3/4"	SC/PT	SC	-	HM	1	5/A6	4/A6	-	TBD	-
27	3'-0" x 7'-0" x 1-3/4"	SC/PT	SC	-	HM	1	5/A6	4/A6	-	TBD	-
28	3'-0" x 7'-0" x 1-3/4"	SC/PT	SC	-	HM	1	5/A6	4/A6	-	TBD	-
29	3'-0" x 7'-0" x 1-3/4"	SC/PT	SC	-	HM	1	5/A6	4/A6	-	TBD	-
30	3'-0" x 7'-0" x 1-3/4"	SC/PT	SC	-	HM	1	5/A6	4/A6	-	TBD	-
31	3'-0" x 7'-0" x 1-3/4"	SC/PT	V	TEMP.	HM	1	5/A6	4/A6	-	TBD	-
32	6'-0" x 7'-0" x 1-3/4"	SC/PT	V	TEMP.	HM	1	5/A6	4/A6	-	TBD	-
33	3'-0" x 7'-0" x 1-3/4"	SC/PT	SC	-	HM	1	5/A6	4/A6	-	TBD	-
34	3'-0" x 7'-0" x 1-3/4"	SC/PT	SC	-	HM	1	5/A6	4/A6	-	TBD	-
35	3'-0" x 7'-0" x 1-3/4"	SC/PT	SC	-	HM	1	5/A6	4/A6	-	TBD	-
36	3'-0" x 7'-0" x 1-3/4"	SC/PT	V	TEMP.	HM	1	5/A6	4/A6	-	TBD	-
37	3'-0" x 7'-0" x 1-3/4"	SC/PT	SC	-	HM	1	5/A6	4/A6	-	TBD	-
38	3'-0" x 7'-0" x 1-3/4"	SC/PT	V	TEMP.	HM	1	5/A6	4/A6	-	TBD	-
39	3'-0" x 7'-0" x 1-3/4"	SC/PT	SC	-	HM	1	5/A6	4/A6	-	TBD	-
40	3'-0" x 7'-0" x 1-3/4"	SC/PT	SC	-	HM	1	5/A6	4/A6	-	TBD	-
41	3'-0" x 7'-0" x 1-3/4"	SC/PT	FG	TEMP.	HM	1	5/A6	4/A6	-	TBD	-
42	3'-0" x 7'-0" x 1-3/4"	SC/PT	SC	-	HM	1	5/A6	4/A6	-	TBD	-
43	3'-0" x 7'-0" x 1-3/4"	SC/PT	SC	-	HM	1	5/A6	4/A6	-	TBD	-
44	3'-0" x 7'-0" x 1-3/4"	SC/PT	SC	-	HM	1	5/A6	4/A6	-	TBD	-
45	3'-0" x 7'-0" x 1-3/4"	SC/PT	FG	TEMP.	HM	1	5/A6	4/A6	-	TBD	-
46	3'-0" x 7'-0" x 1-3/4"	SC/PT	FG	TEMP.	HM	1	5/A6	4/A6	-	TBD	-
47	3'-0" x 7'-0" x 1-3/4"	SC/PT	FG	TEMP.	HM	1	5/A6	4/A6	-	TBD	-
48	3'-0" x 7'-0" x 1-3/4"	SC/PT	FG	TEMP.	HM	1	5/A6	4/A6	-	TBD	-
49	3'-0" x 7'-0" x 1-3/4"	SC/PT	SC	-	HM	1	5/A6	4/A6	-	TBD	-



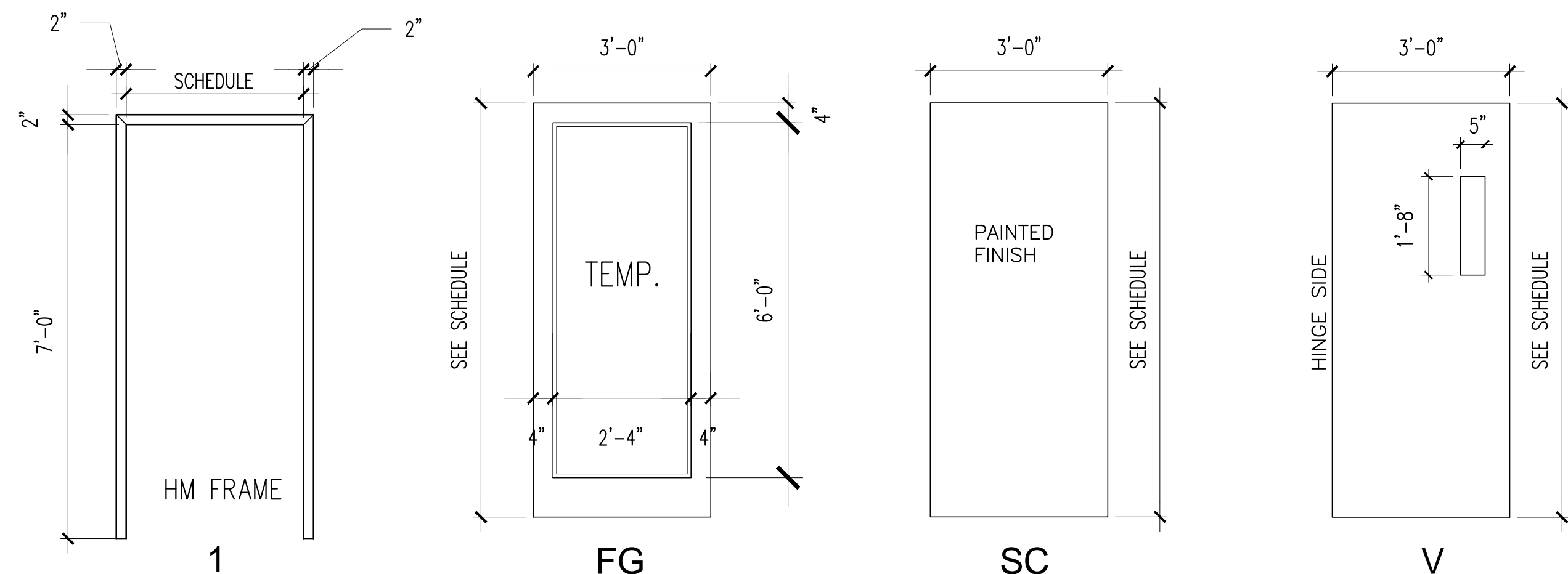
HEAD DETAIL

5 3"=1'-0" DOOR DETAILS



JAMB DETAIL

4 3"=1'-0" DOOR DETAILS



2 1/2" = 1'-0" DOOR TYPES

3 NTS DOOR SCHEDULE

- SYMBOL  $\sqrt{\quad}$  SHOWN ON SCHEDULE INDICATES A REPEAT OF A PREVIOUS REFERENCE ON THE SCHEDULE.
  - ALL DOORS ARE 1-3/4" THICK UNLESS OTHERWISE NOTED.
  - DOOR CONSTRUCTION: TYPICAL - SC - SOLID CORE HC - HOLLOW CORE HM - HOLLOW METAL AL - ALUMINUM & GLASS
  - FINISH TYPICAL - WV - WOOD VENEER PL - PLASTIC LAMINATE MP - METAL PAINTED AP - ALUMINUM PAINTED PT - PAINTED
  - GLASS TYPICAL - CW - CLEAR WIRE CP - CLEAR PLATE TP - TEMPERED LG - LEADED GLASS
  - FRAME TYPICAL - FF - FLUSH FRAME AL - ALUMINUM HM - HOLLOW METAL WD - WOOD AP - ALUMINUM PAINTED
  - MAXIMUM GLASS AREA FOR 45 MIN. AND 20 MIN. DOOR SHALL NOT EXCEED 1296 SQ.IN. AND HAVE A MAX. LITE DIMENSION OF 54". MAXIMUM GLASS AREA FOR 90 MIN. DOOR SHALL BE 100 SQ.IN.
  - CONTRACTOR TO VERIFY EXISTING CONDITIONS OF ALL PROPOSED MASONRY OPENINGS PRIOR TO CUTTING MASONRY. ARCHITECT IS TO BE NOTIFIED SHOULD ANY OPENINGS REQUIRE ADJUSTMENT.
- DOOR NO. (2) REFER TO SCHEDULE FOR HARDWARE, MODIFICATIONS, REMARKS, ETC.
  - THE FOLLOWING NOTES APPLY TO ALL HOLLOW METAL FRAMES:
    - ALL HOLLOW METAL FRAMES IN MASONRY OPENINGS SHALL BE FULLY GROUTED
    - ALL HOLLOW METAL FRAMES SHALL BE FIELD PAINTED
    - ALL DOOR JAMB ANCHORS SHALL BE VERIFIED WITH PLAN CONDITIONS AND SPECIFICATIONS
    - LABELED DOOR AND FRAMES SHALL CONFORM TO NFPA NO. 80.
    - PEENED KNOBS SHALL BE PROVIDED FOR ALL DOORS FROM CORRIDORS TO ELECTRICAL CLOSETS, MECHANICAL ROOMS, TELEPHONE CLOSETS, AND STAIR PENTHOUSES
    - ALL FRAMES ARE "WRAP AROUND" UNLESS NOTED

1 NTS DOOR NOTES

GENERAL CONTRACTOR

STRUCTURAL ENGINEER

MEP ENGINEER

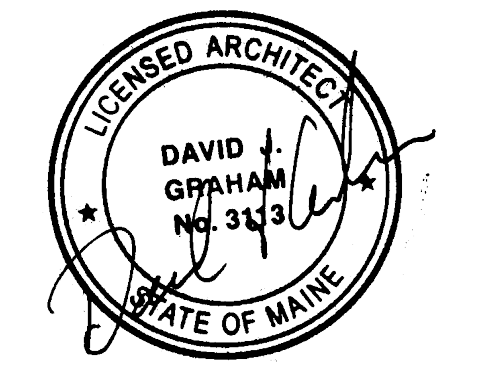
CLIENT

Spurwink Services  
 899 Riverside Street  
 Portland, ME 04103

PROJECT

Spurwink Services

901 Washington Ave.  
 Portland, ME 04101



ISSUED FOR PERMIT

INFORMATION

Path: M:/boulos/spurwink

Issue Date: 07.24.14

Drawn By: djg

Checked By: djg

Revision:

1.

2.

3.

4.

TITLE

DOOR SCHEDULE AND DETAILS

SCALE

1/8"=1'-0"

© 2014 Graham Architects. All rights reserved. Information, material, and designs in this document are proprietary to and owned by Graham Architects and may not be disclosed to any third party, reproduced, posted on a global computer information network, or distributed in any way without the written consent from Graham Architects.