

B* - CHANGE
HARDWARE TO
ADA COMPLIANT

EXISTING MECHANICAL PLATFORM
ABOVE (APPROX 1500 SF),
ACCESS THRU PLYND PANEL IN
CEILING SYSTEM, NO SEPERATION

2003 International Building Code

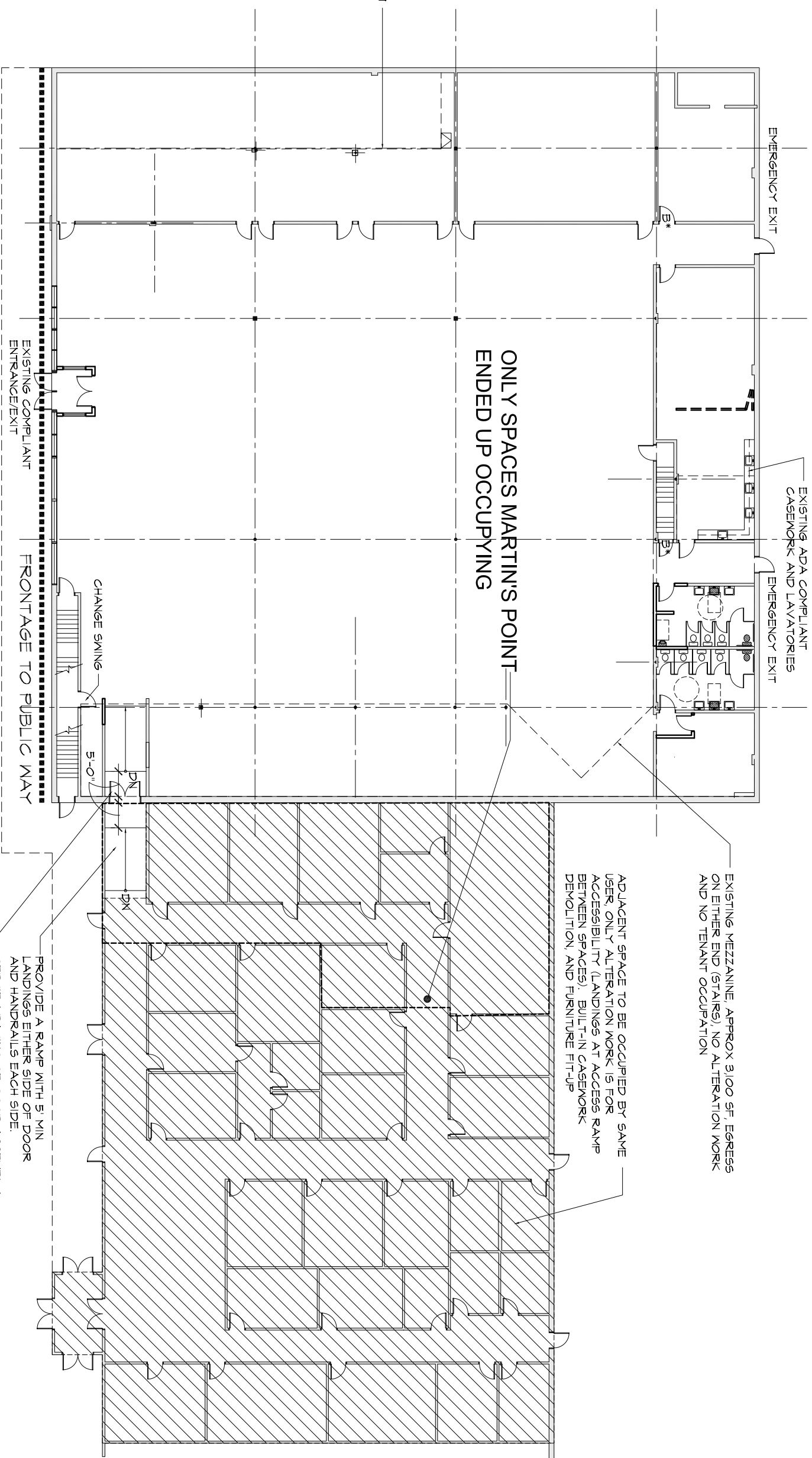
Existing single story structure @ 20600 GSF
Use Group - Business (B), Previous use Business
Type 5B Construction, noncombustible walls, roof,
columns and beams, combustible joist and flooring at
mezzanines
Existing Mezzanine to be unaltered and unoccupied
(Re)certify NFPA 13 Fully Sprinklered Building

Section 506 Area Modifications
Automatic Sprinkler increase for single story building -
300x
A=9000 + Table 503 (9000)(300)/(100) = 36,000
GSF

NFPA 101: Life Safety Code 2006

Primary Occupancy: Existing Business (see Chapter 34)
34.1 General Requirements
Classification of Hazard of Contents (see Section 6.2)
= Ordinary Hazard
Table T.3.1.2 Occupant Load
Business 100sf / person

2000 Maine State Internal Plumbing Code
Occupant Load - 198 (99 Women / 99 Men)
Water Closets - Male (4) 341, Female (5) 441
Urinals - (1)
Lavatories - Male (3), Female (3)



EMERGENCY EXIT

EXISTING ADA COMPLIANT
CASEWORK AND LAVATORIES
EMERGENCY EXIT

ONLY SPACES MARTIN'S POINT
ENDED UP OCCUPYING

EXISTING COMPLIANT
ENTRANCE/EXIT

FRONTAGE TO PUBLIC WAY

CHANGE SWING

5'-0"

DN

DN

EXISTING MEZZANINE, APPROX 3,100 SF. EGRESS
ON EITHER END (STAIRS), NO ALTERATION WORK
AND NO TENANT OCCUPATION

ADJACENT SPACE TO BE OCCUPIED BY SAME
USER. ONLY ALTERATION WORK IS FOR
ACCESSIBILITY (LANDINGS AT ACCESS RAMP
BETWEEN SPACES). BUILT-IN CASEWORK
DEMOLITION AND FURNITURE FIT-UP

PROVIDE A RAMP WITH 5' MIN
LANDINGS EITHER SIDE OF DOOR
AND HANDRAILS EACH SIDE.
CERTIFY RATING OF DOOR ASSEMBLY
AND DOOR CLOSER CONNECTED TO
FIRE PROTECTION SYSTEM

14,800 NSF
100 SF/P
198 OCCUPANTS

3 BUILDING PLAN
1/16" = 1'-0"

