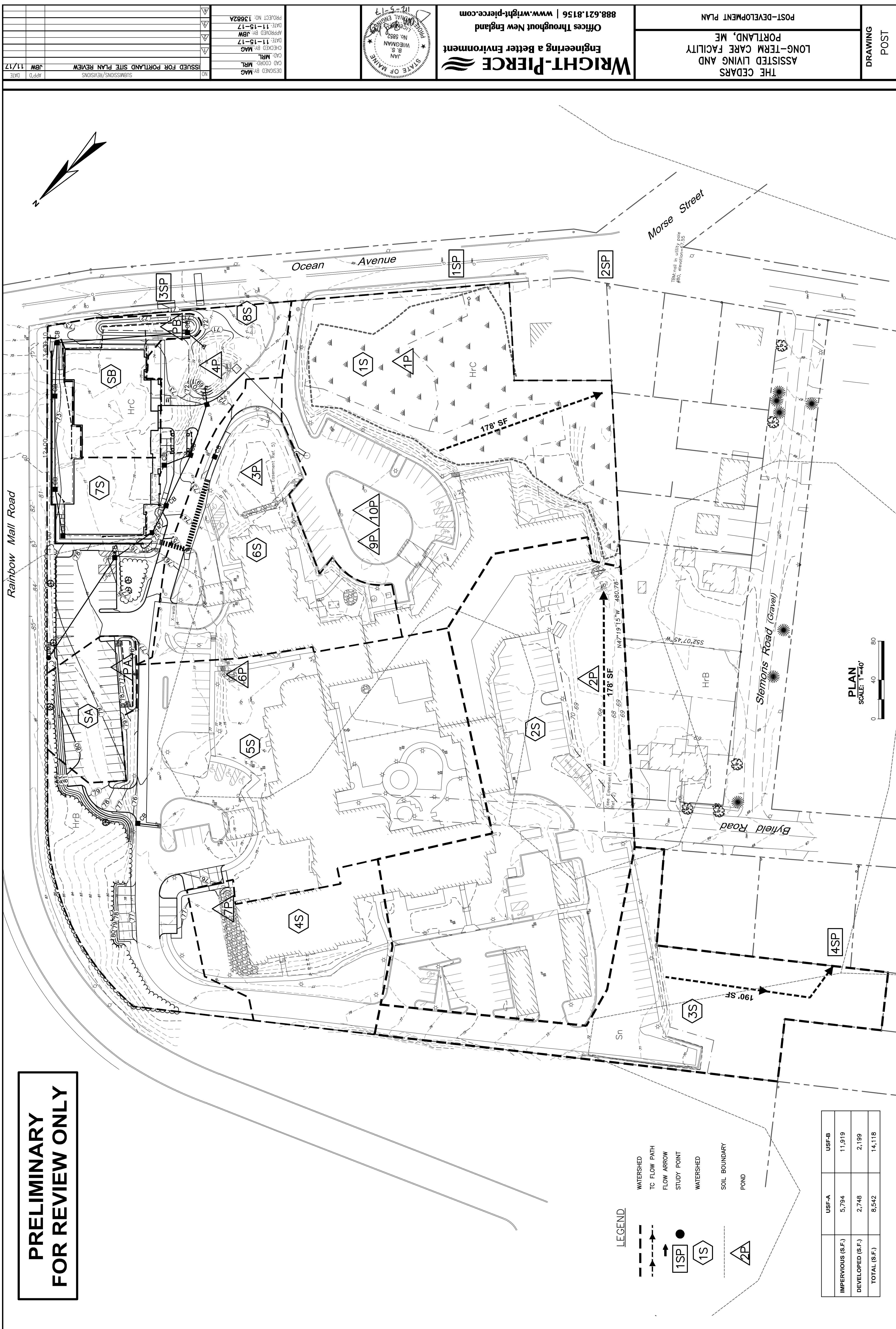


**PRELIMINARY
FOR REVIEW ONLY**

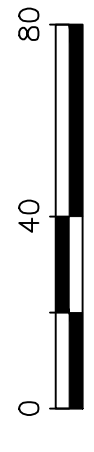


LEGEND

- WATERSHED
- TC FLOW PATH
- FLOW ARROW
- STUDY POINT
- 1SP 1S 2P WATERSHED
- SOIL BOUNDARY
- POND

| | USF-A | USF-B |
|-------------------|-------|--------|
| IMPERVIOUS (S.F.) | 5,794 | 11,919 |
| DEVELOPED (S.F.) | 2,748 | 2,199 |
| TOTAL (S.F.) | 8,542 | 14,118 |

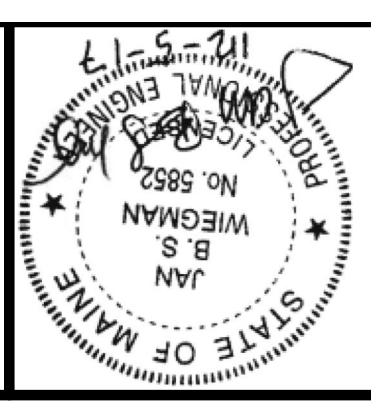
PLAN
SCALE 1"=40'



| NO. | ISSUED FOR PORTLAND SITE PLAN REVIEW | DATE |
|-----|--------------------------------------|----------|
| 1 | ISSUED FOR PORTLAND SITE PLAN REVIEW | 11/17/17 |

DESIGNED BY: MRL
 CAD COORD. BY: MRL
 CHECKED BY: MAG
 DATE: 11-15-17
 APPROVED BY: JBM
 DATE: 11-15-17
 PROJECT NO: 13682A

ISSUED FOR PORTLAND SITE PLAN REVIEW



WRIGHT-PIERCE
 Engineering a Better Environment
 Offices Throughout New England
 888.621.8156 | www.wright-pierce.com

THE CEDARS
 ASSISTED LIVING AND
 LONG-TERM CARE FACILITY
 PORTLAND, ME
 POST-DEVELOPMENT PLAN

DRAWING
 POST