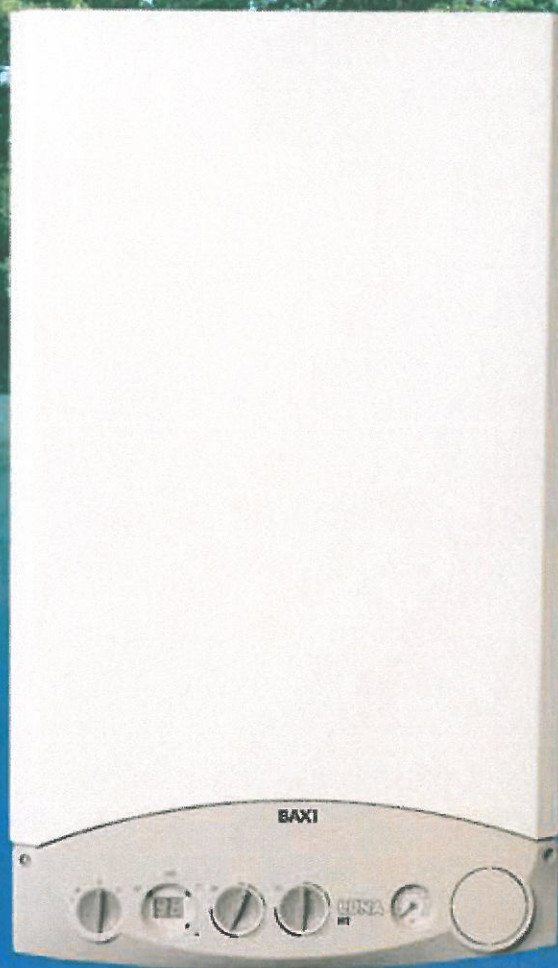


BAXI



BAXI LUNA  HT

Modulating, Condensing Wallhung Boilers

BAXI LUNA HT wallhung

An ideal green solution for all heating and domestic hot water needs

Environmentally friendly

- ◆ Emits 90% less CO and 80% less NOx
- ◆ Can cut utility bills in half
- ◆ Can cut greenhouse gas emissions by more than half

Compact space saver

- ◆ Approved for closet installation
- ◆ Up to 98% efficient (92.5% AFUE)
- ◆ Endless hot water on demand

Quietest boiler on the market

- ◆ Fully modulating fan
- ◆ Direct vent
- ◆ Automatic self diagnostics

Baxi Field Test Results

Building A Better Future

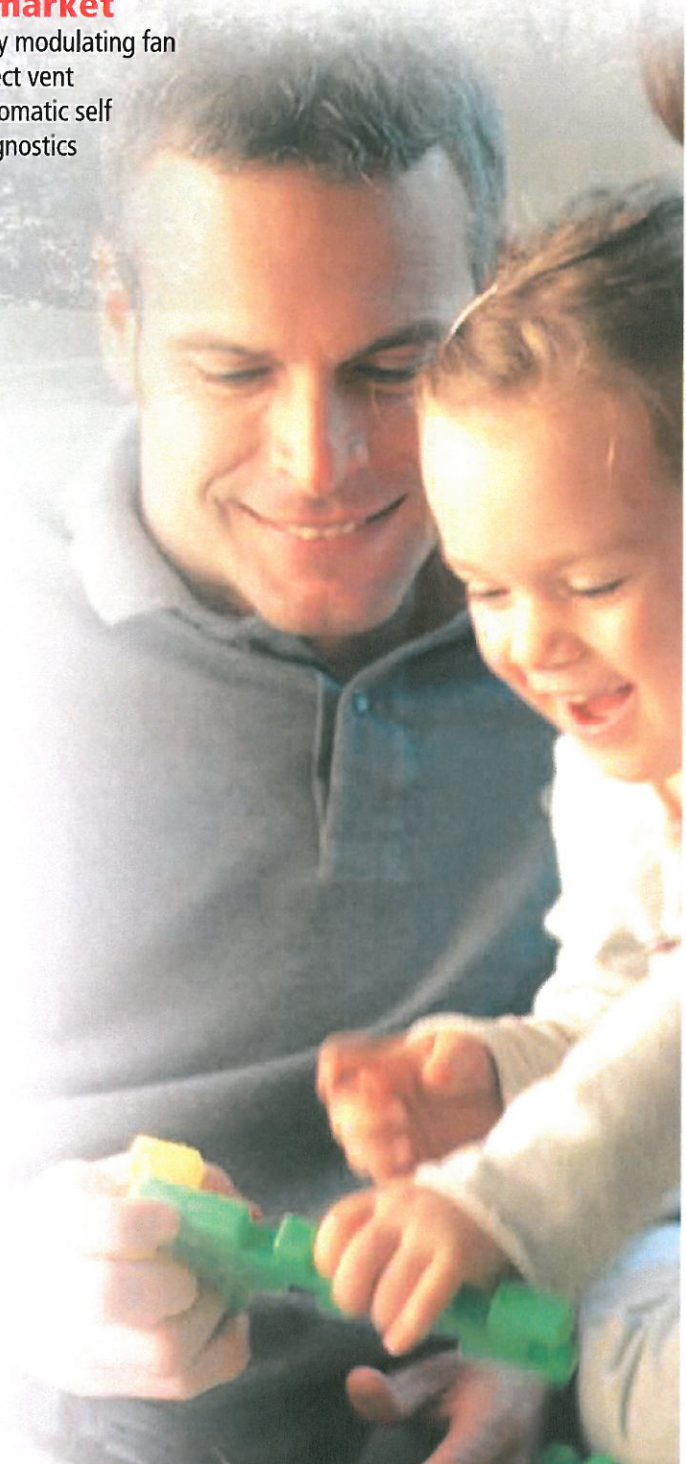
Marathon International, Baxi's exclusive North American distributor, performs extensive field tests in the marketplace. A 2007 field test in Ontario, Canada shows impressive results. The test involves installation of a Baxi Luna combination heating and domestic hot water boiler, together with a hydronic air handler. The test site is a 2,000 square-foot home built in 1984, with well insulated windows installed seven years ago. Here are some highlights:

Endless hot water: Entire family of five finds hydronic heating to be much more comfortable and more even than previous forced air furnace. The separate, on-demand DHW loop on the boiler means morning arguments about running out of hot water for showers are a thing of the past.

Gas bills cut in half: Family is enjoying fuel consumption savings and lower gas bills totaling up to 58% a month less than last year. Previous 60-gallon tank called for heating for 15 minutes out of every hour, 24/7.

Environmental benefits: Household expects to cut fuel consumption in half, saving 1,500 cubic meters (530 therms) of natural gas annually. That equates to a greenhouse gas emissions reduction of about 2.6 tonnes of CO₂ a year – the same amount of CO₂ not produced by parking a car for six months, or the amount of CO₂ removed by planting trees on one acre of land.

For more information, visit www.wallhungboilers.com/news



condensing boilers deli

SMART TECHNOLOGY

- ◆ Easy adjustment for natural gas or propane
- ◆ Nickel-chrome, stainless steel premix burner (AISI 316L) and primary heat exchanger, high resistance to corrosion, no internal welding, large heat exchange surface and low heat inertia
- ◆ Electronic, gradual ignition
- ◆ Fully modulating fan and calibrated venturi
- ◆ Gas valve with continuous modulation system
- ◆ Electronic 3 way diverter valve
- ◆ Gas valve has 1:1 gas/air mechanical control
- ◆ Sealed combustion

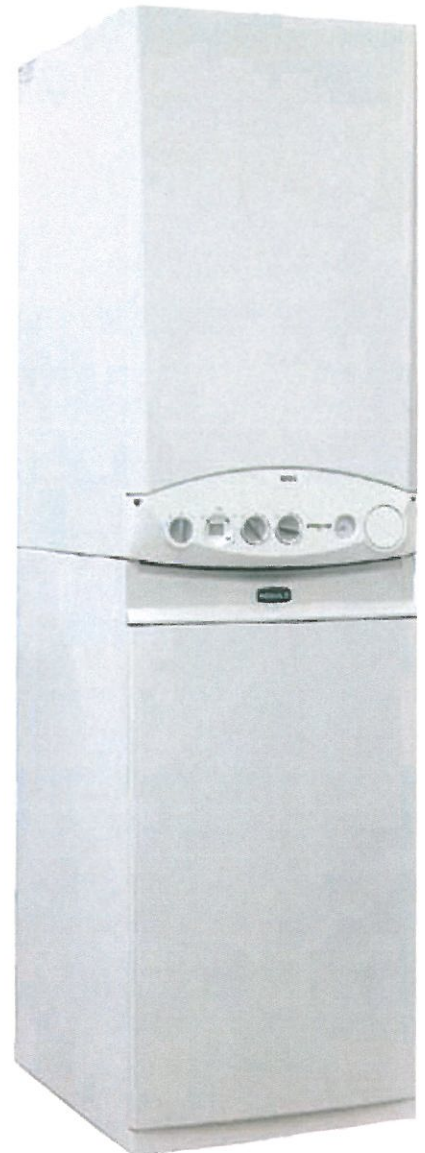
CONTROL AND SAFETY SYSTEM*

- ◆ Fully automatic self diagnostics
- ◆ Double CPU microprocessor for efficiency optimization
- ◆ Anti-freeze protection (Unit will operate at low fire until 86° F/30°C loop temperature is achieved)
- ◆ Pump protection (automatically operates for 10 seconds if system is static for 24 hours)
- ◆ 3-way valve protection (electronic communication and operation to main circuit board if static for 24 hours)
- ◆ Other built-in features:
 - Circulating pump with automatic air vent
 - Pressure relief valve
 - Expansion Tank
 - Heating circuit fill and drain valves
 - Independent heating and domestic temperature set point dials
 - Electronic temperature control NTC sensors
 - High limit switch
 - Flue limit switch
 - Flame sensing electrode
 - Low water cut-off
 - Backflow device
 - Automatic by-pass
 - Inducer fan

*Not all components are included with commercial units.

Baxi Modulo

Baxi Modulo features the Baxi Luna HT 1.330 condensing boiler* atop a 21-gallon (US) stainless steel, insulated storage tank. The Modulo may also be used with the Baxi Luna 3 Comfort 1.31 standard efficiency boiler. Its sleek design and compact size (17¾" x 21¾" x 64½") makes Baxi Modulo a great addition to any space.



Combines smart looks with smart technology

er home comfort

Baxi Luna HT condensing boilers can be combined with ...



Wall Radiators



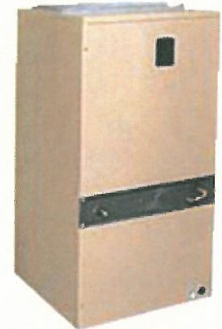
Heated Towel Racks



Indirect-fired Tanks



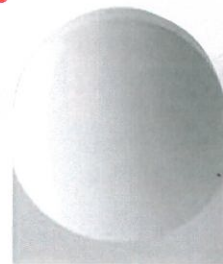
In-floor Heating



Hydronic Air Handlers

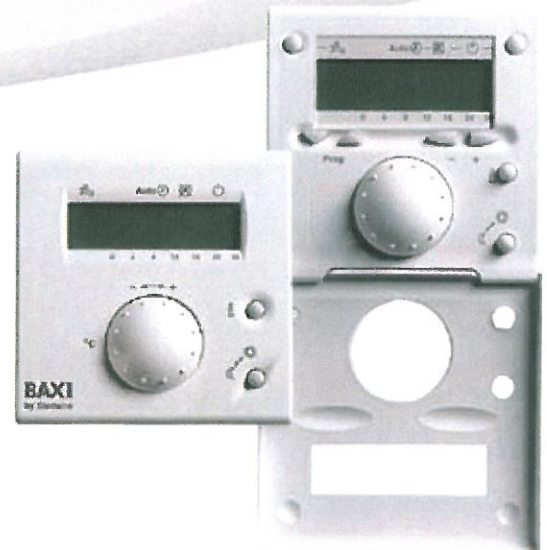
Temperature Regulation Accessories

Baxi Luna HT condensing boilers can be connected to an outdoor probe to produce greater comfort, higher efficiency and lower energy consumption. It can also be supplied with the remote controller and room thermostat which allows remote programming, setting and control of up to 50 parameters. A Baxi accessory made by Siemens, this is a smart control – meaning it assesses the R-value of a home or business space, and adjusts the rate of gas consumption accordingly.



Outdoor Probe

Remote Controller



condensing boilers

90%
less CO

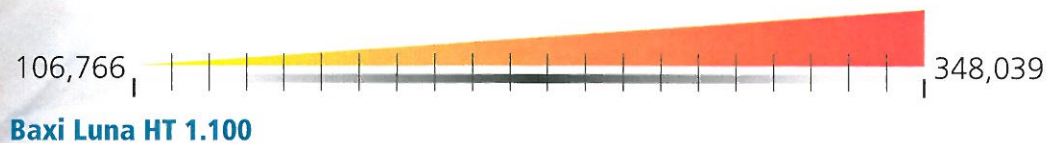
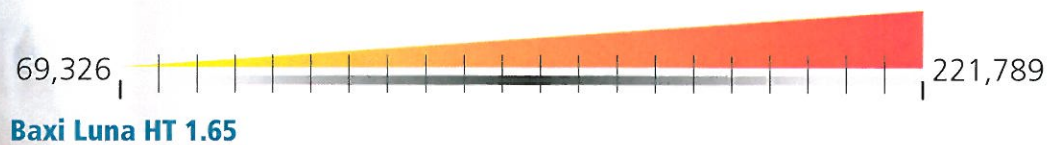
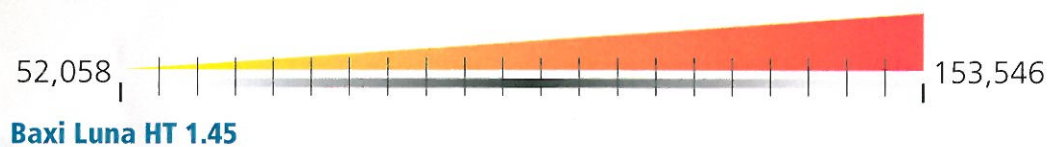
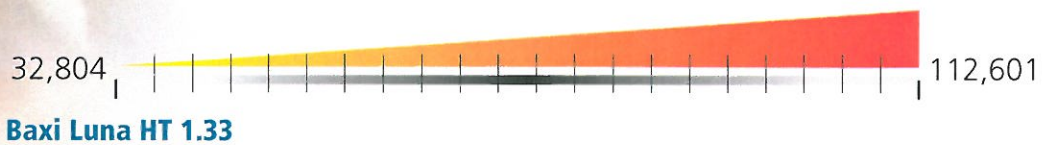
80%
less NOx

Heat Output Modulation Range (BTU/hr)

Combination Heating and Domestic Hot Water Model



Heating Models



The Baxi Luna HT series features five modulating, condensing boilers that can generate up to 98% efficiency, providing heat for an entire home or office from 600 to 6,000 square feet.

Baxi technology regulates the modulation of the burner flame – a key contributor to Baxi high energy efficiency. Also, Baxi condensing boilers utilize energy from condensing water vapor in the exhaust gases, thereby optimizing fuel consumption.

Baxi Luna HT Technical Notes

Multiple Baxi Luna HT condensing boilers can be cascaded, sharing a common venting system with a single exterior penetration. A five-unit Baxi Luna HT 1.65 application, for example, generates a combined maximum heating output of 1.1 million BTU/hr.



Description	Residential		Commercial			
	Luna HT 380	Luna HT 1.33	Luna HT 1.45	Luna HT 1.65	Luna HT 1.100	
Rated heat input	BTU/hr	126,376	126,376	167,262	241,600	379,127
Reduced heat input	BTU/hr	37,192	37,192	55,618	73,361	112,980
Rated heat output	BTU/hr	112,601	112,601	153,546	221,789	348,039
Reduced heat output	BTU/hr	32,804	32,804	52,058	69,326	106,766
Sealed combustion chamber		yes	yes	yes	yes	yes
Ignition		electronic	electronic	electronic	electronic	electronic
Anti-frost device on heating circuit		yes	yes	yes	yes	yes
Maximum pressure on heating circuit	psi	30	30	30	30	30
Regulation of heating circuit water temperature	– high temp	°F	86/180	86/180	86/180	86/180
	– low temp	°F	86/113	86/113	86/113	86/113
Dimensions:	Height	in	30.04	30.04	37.40	37.40
	Width	in	17.71	17.71	23.62	23.62
	Depth	in	13.58	13.58	18.35	18.35
Coaxial/Dual flue tube	in	2.36-3.93/2.36	2.36-3.93/2.36	3.15-4.92/3.15	3.15-4.92/3.15	4.33-6.30/4.33
Net weight	lbs	102	102	141	158	215
Gas type		NG/LP	NG/LP	NG/LP	NG/LP	NG/LP

BAXI

Marathon International
Exclusive North American Distributor
for Baxi Products
1815 Sismet Road, Mississauga
Ontario L4W 1P9, Canada

info@wallhungboilers.com

DISTRIBUTED BY:

www.wallhungboilers.com



The manufacturer of the Baxi Luna HT condensing boiler series is ISO 9001 certified for quality management, OHSAS 18001 for health and safety management and ISO 14001 for environmental management.

The Company assumes no responsibility for any possible contents mistakes, and reserves the right to make changes in products, due to technical or commercial demands, at any time without notice.