

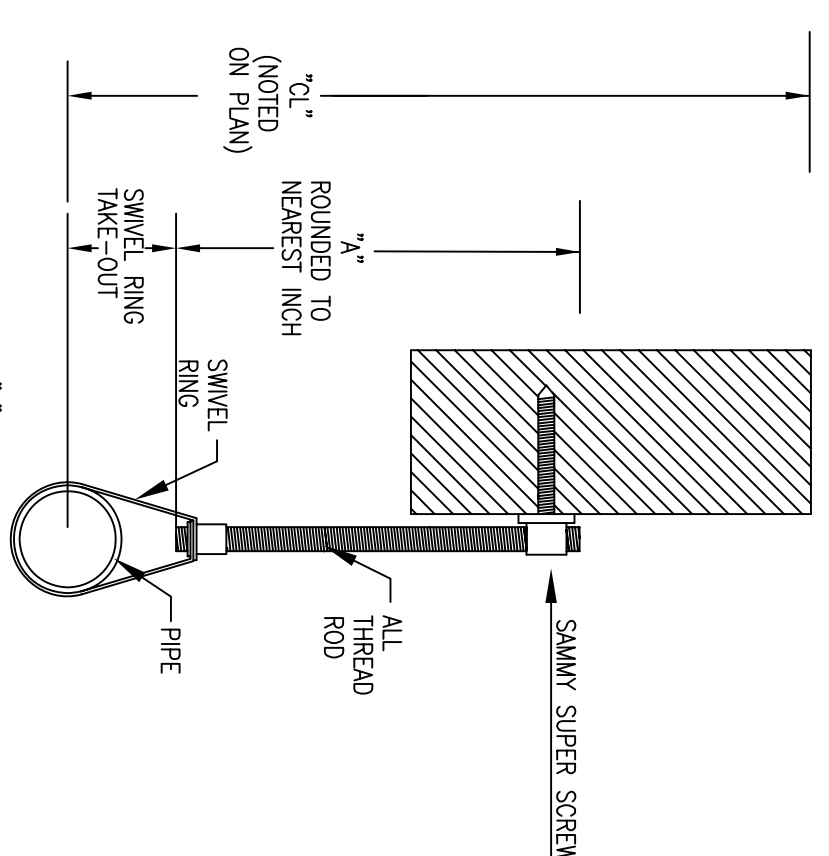
SECTION VIEW
SCALE: 1/4"=1'-0"

HYDRAULIC DESIGN DATA

System # & Area	#1 - #2
No. of Sprinklers	3
Density	0.05 GPM
Design Area	3 SPRINK
Hose Allowance	N/A GPM
Water Flow Rate	44 GPM
Residual Pressure at Base of Riser	41 PSI
SAFETY & DESIGN	9.92 PSI

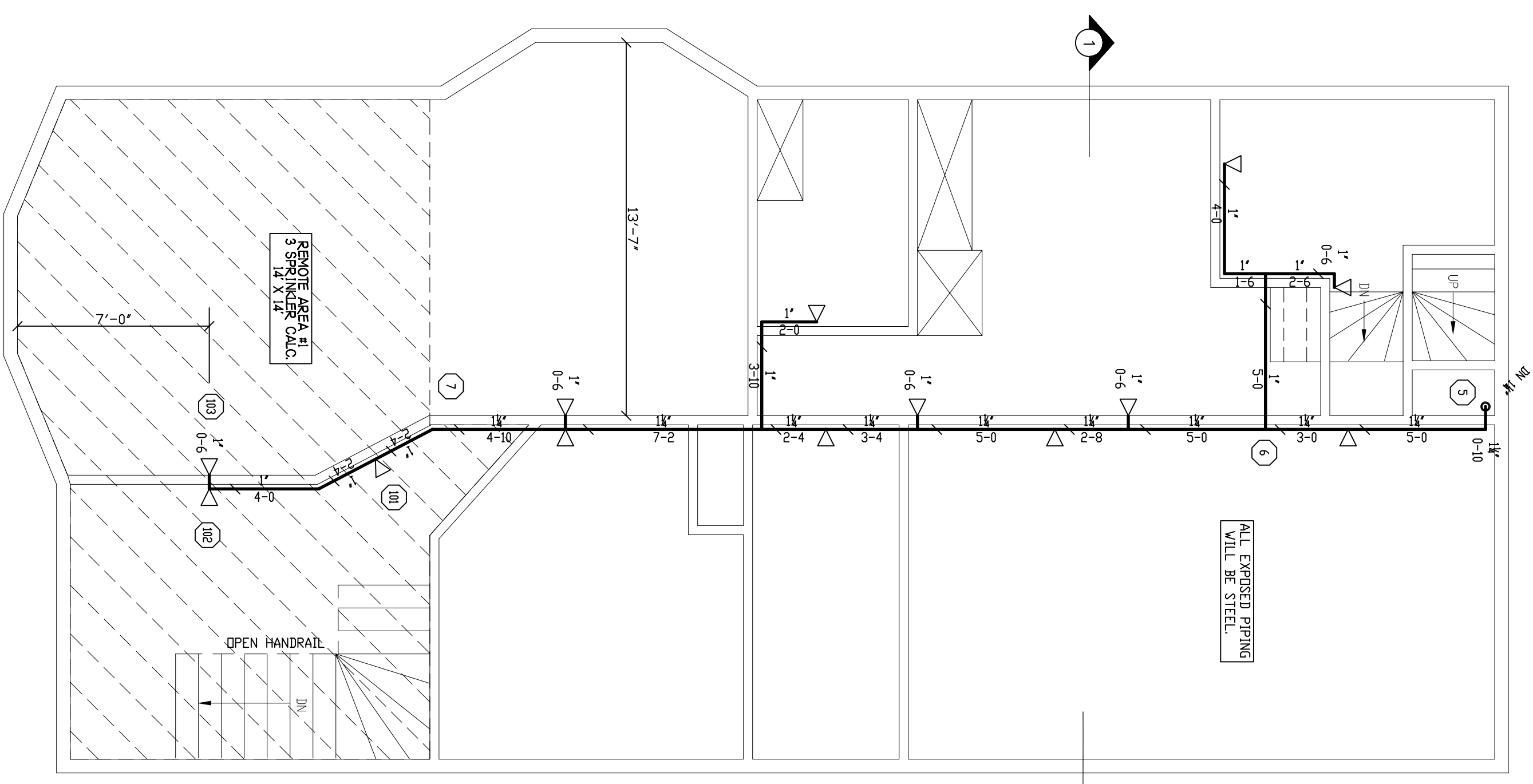
HYDRAULIC DESIGN DATA

System # & Area	#1 - #2
No. of Sprinklers	3
Density	0.05 GPM
Design Area	3 SPRINK
Hose Allowance	N/A GPM
Water Flow Rate	43 GPM
Residual Pressure at Base of Riser	46 PSI
SAFETY & DESIGN	5.59 PSI

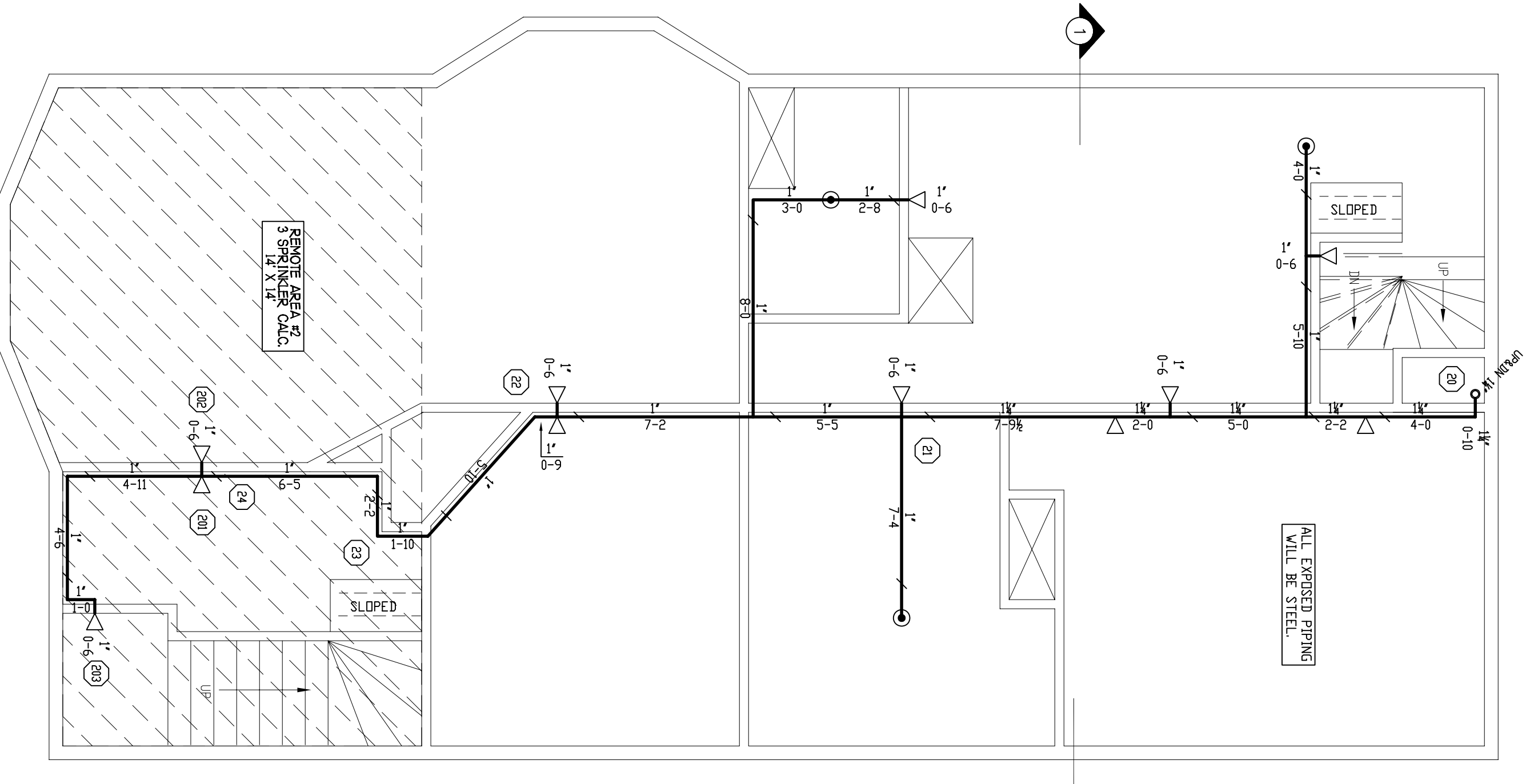


TYPE #10 HANGER
NOTE ON HANG. 3" DIMENSION
PIPE SIZES 5" THROUGH 8" - ROD SIZE 1/2"

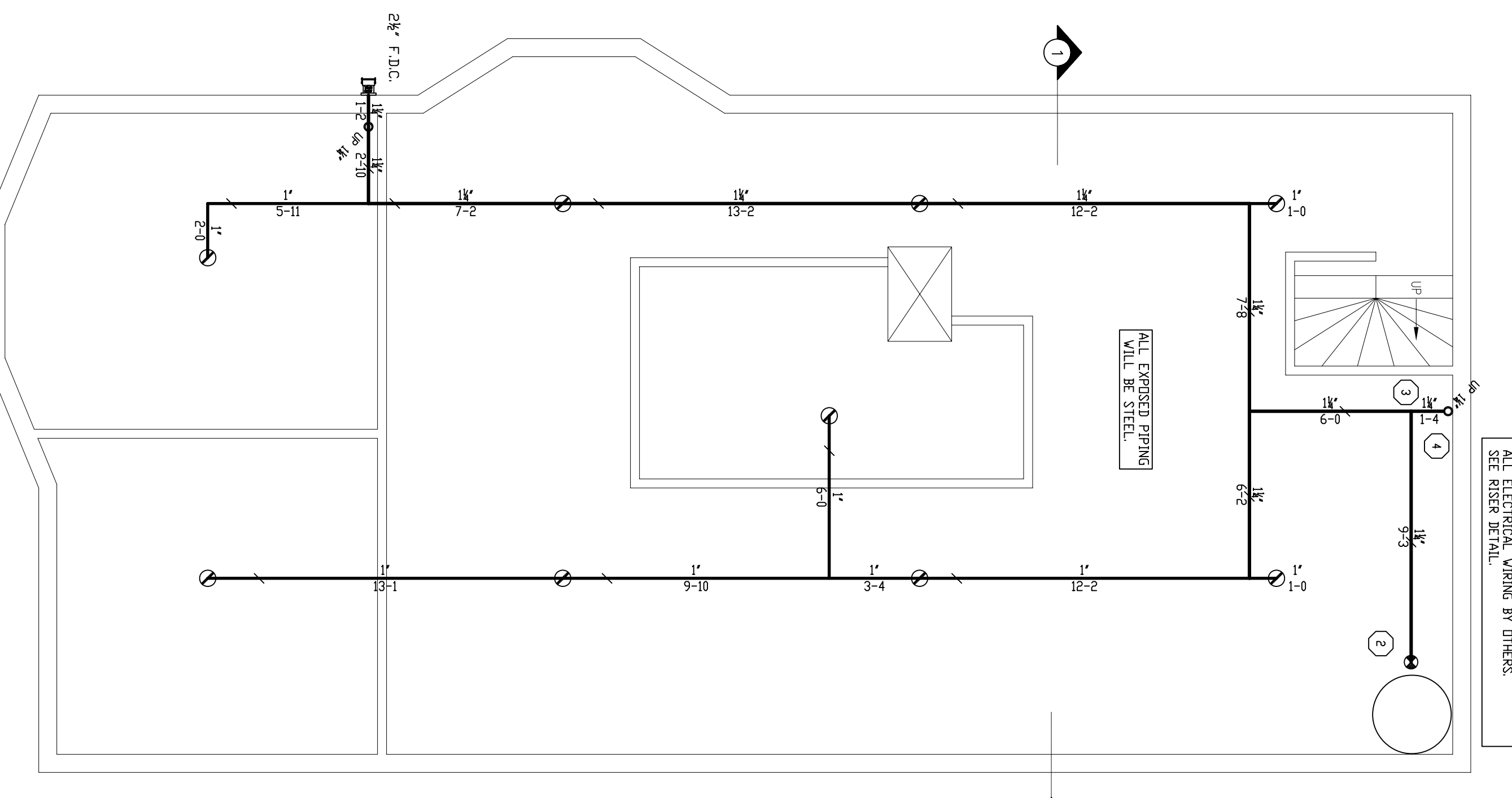
SSS GALVAN WATER STORAGE TANK WITH
LEVEL ALARM. PIPE RINGS TO BE MONITORED
SITE RISEN DETAIL.



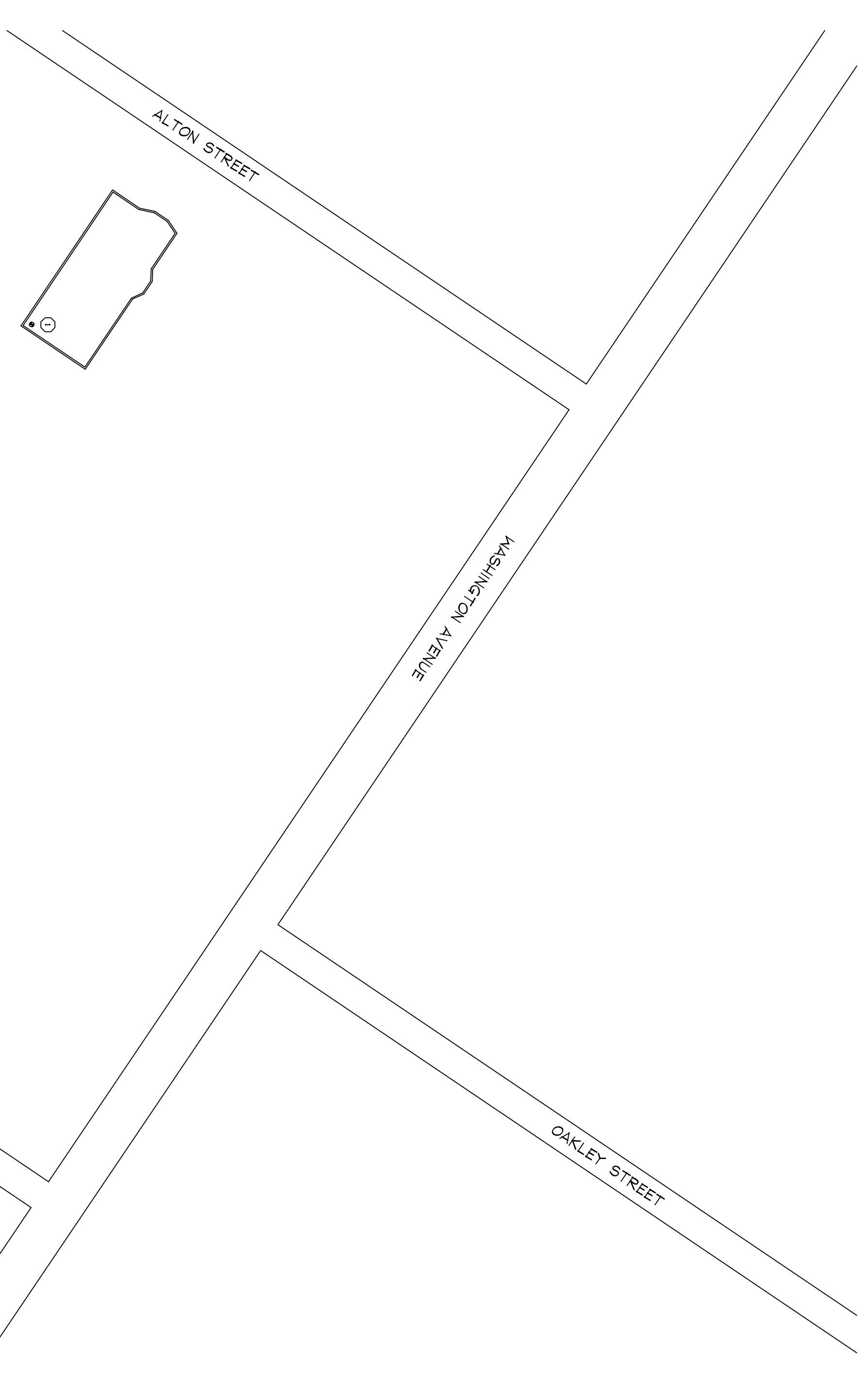
SECOND FLOOR FIRE PROTECTION
SCALE: 1/4"=1'-0" QUANTITY Q=13



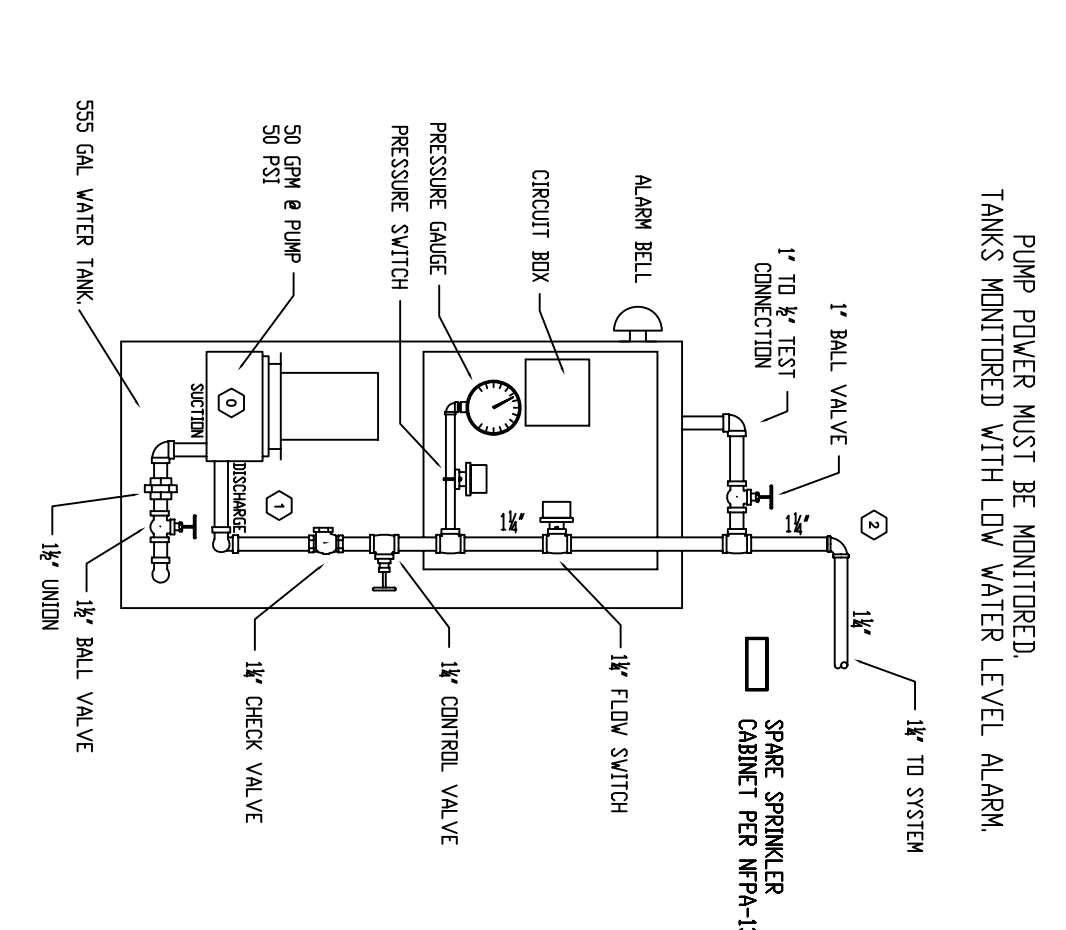
GROUND FLOOR FIRE PROTECTION
SCALE: 1/4"=1'-0" QUANTITY Q=11



BASEMENT FIRE PROTECTION
SCALE: 1/4"=1'-0" QUANTITY Q=9



SITE PLAN
SCALE: 1/8"=1'-0"



FIRE PROTECTION PUMP AND TANK DETAIL

GENERAL NOTES

- SYSTEM TO BE DESIGNED AND INSTALLED IN ACCORDANCE WITH MAINE LIFE SAFETY 2012. EXPOSED PIPING TO BE BLACK STEEL SCH. 40. PIPE AND FITTINGS TO BE COMBINATION OF BLACK STEEL SCH. 40 TYPE AND APPROVED REPLACEMENT PLASTIC. EXISTING AND APPROVED TO BE USED WITH THIS STANDARD. MAX SPACING OF RESIDENTIAL PENDANT SPRINKLERS TO BE 16'-0". MAX SPACING OF RESIDENTIAL STEWALL SPRINKLERS TO BE 14'-0". ALL WIRING UP DEVICES BY OTHERS. SPRINKLERS OF EACH TYPE SHALL BE PROVIDED PER NFPA 13. SPRINKLERS MAY BE OMITTED FROM THE FOLLOWING:
 - CLOTHES CLOSETS, LINEN CLOSETS, AND PANTRIES WITHIN THE DWELLING UNITS WHERE THE AREA OF THE SPACE DOES NOT EXCEED 24 SQ. FT. AND THE CEILING HEIGHT DOES NOT EXCEED 3 FT. AND THE WALLS AND CEILING ARE SURFACED WITH NON-COMBUSTIBLE OR LIMITED COMBUSTIBLE MATERIALS AS DEFINED BY NFPA.
 - ANY PORCHES, BALCONIES, CORRIDORS, AND STAIRS THAT ARE OPEN AND ATTACHED.
 - ATTIC SPACE/ROOF EQUIPMENT ROOMS, TRAIL SPACES, FLOOR/CEILING SPACES, ELEVATOR SHAFTS, AND OTHER CONCEALED SPACES THAT ARE NOT USED OR INTENDED FOR LIVING PURPOSES OR STORAGE.
 MAINTENANCE OF THE SPRINKLER SYSTEM IS THE RESPONSIBILITY OF THE OWNER. PROTECTION OF THE SPRINKLER SYSTEM AGAINST FREEZING IS THE RESPONSIBILITY OF THE OWNER.

REVISIONS	NOTES	HEAD COUNT	STANDARD SYMBOLS	STANDARD SYMBOLS	INSPECTIONS
		SPRINKLER TYPE IDENTIFICATION NO. MFG. ESC. MODEL FINISH SURFACE TAMP. SYMBOL QUANT.	POST INDICATOR VALVE KEY VALVE FIRE HOIST FIRE DEPT. CONNECTION O.S. & Y GATE VALVE SWING CHECK VALVE NON UNDERGROUND DRIP UNDERGROUND	ALARM CHECK VALVE RISER W/ALARM VALVE RISER W/DRY VALVE RISER W/ELEC. FLOW SWITCH RISER W/RELUCF. VALVE WATER MOTOR BELL ELECTRIC BELL ELECTRIC BELL DEPT. CONNECTION	1. 2. 3. 4. 5.
		QUICK RESP. PENDANT K=4.9 T12234 T12234 NA 1/2" 155° 3			
		QUICK RESP. PENDANT K=4.9 T12234 T12234 NA 1/2" 155° 3			
		QUICK RESP. STEWALL K=4.4 T12234 T12234 NA 1/2" 155° 24			
		TOTAL SPRINKLERS THIS DRAWING			

BETHANY HOUSE PARISH
10 ALTON STREET
PORTLAND, MAINE 04103

FREEDOM FIRE PROTECTION, INC.
209 QUAKER RIDGE ROAD
CASCO, MAINE 04015

JOB No. M0079
DATE 6/14/12
DRAWN BY MAN
SCALE AS NOTED
SHEET No. FP-10f1