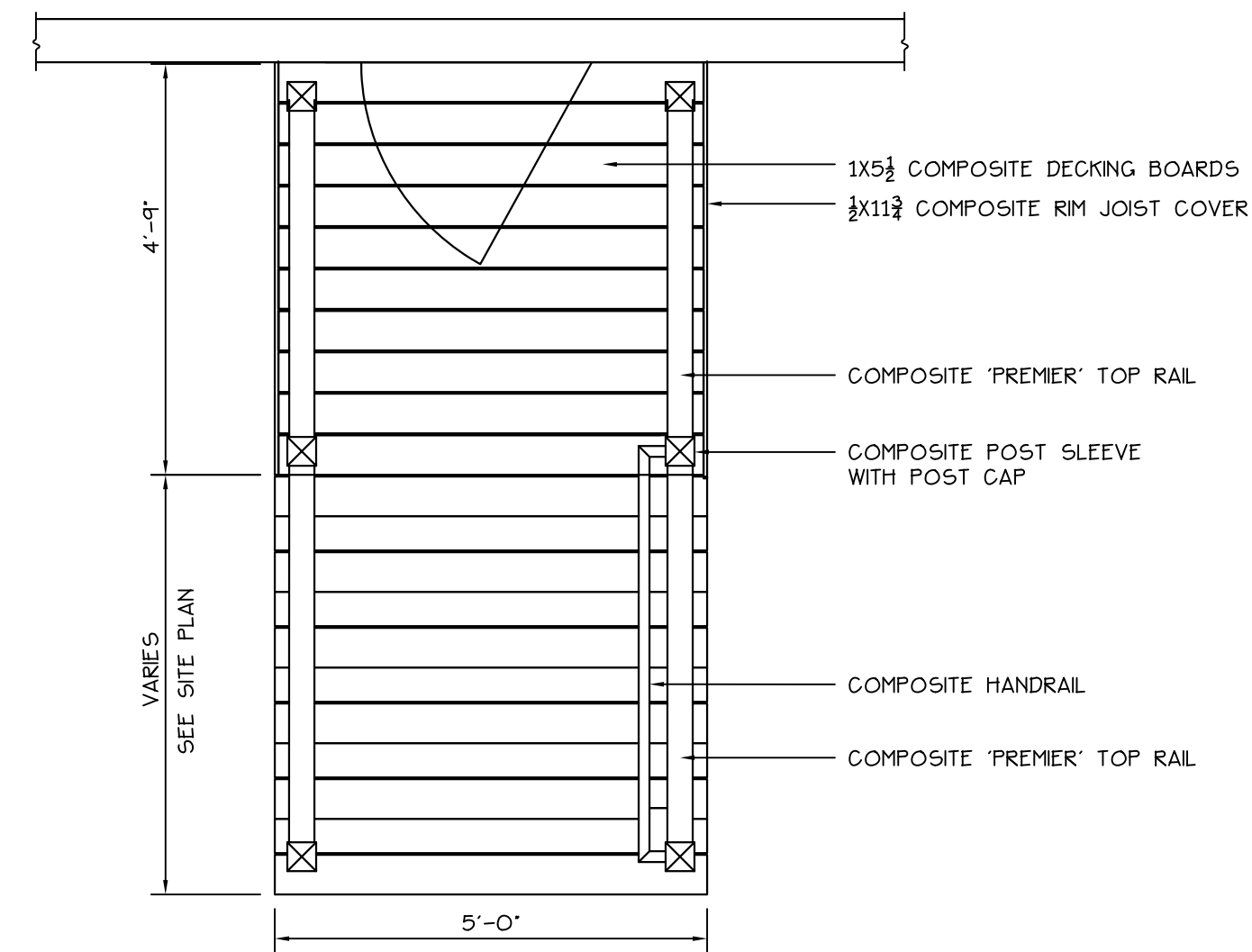


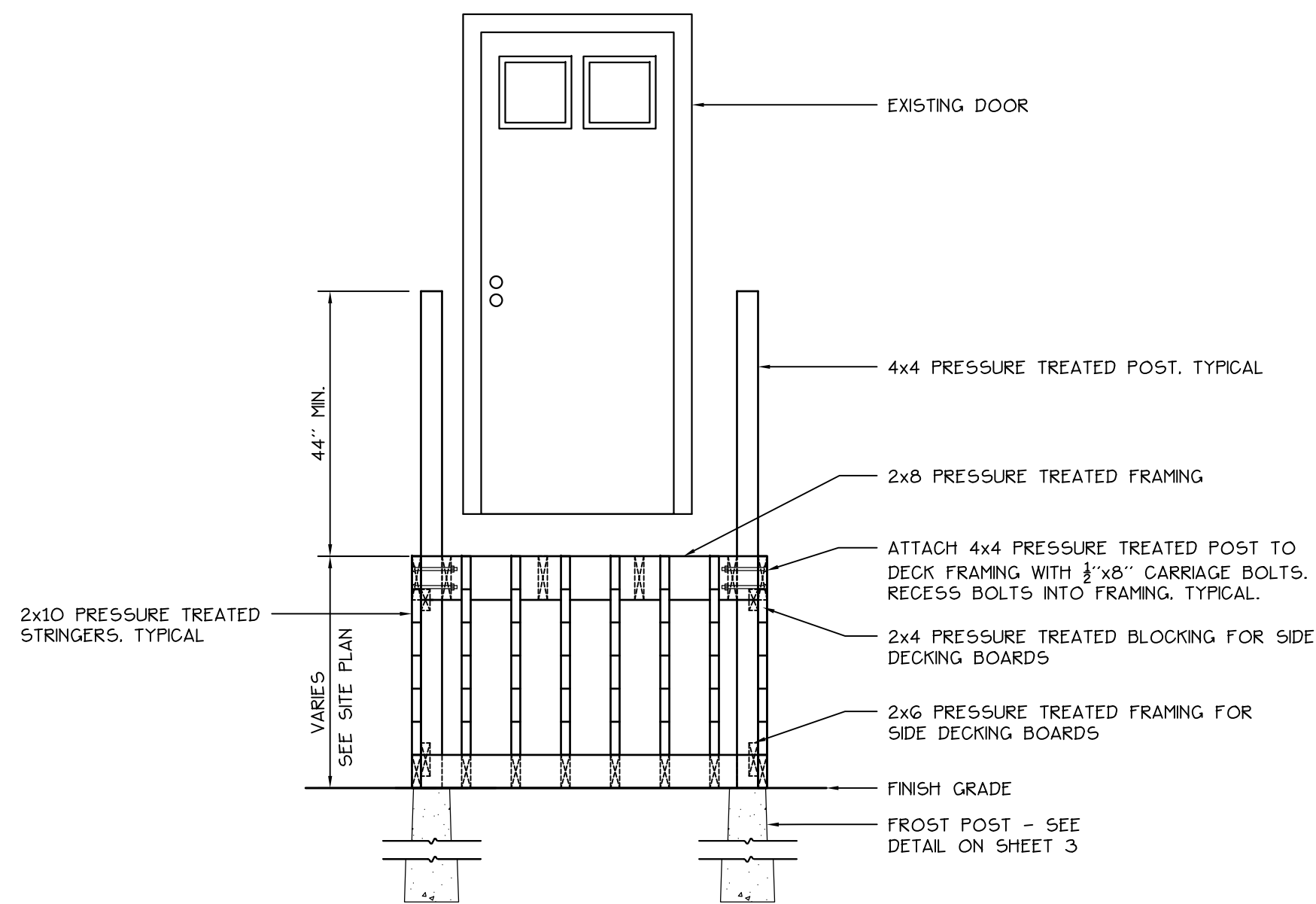
NUMBER OF TREADS AND RISERS VARIES. VERIFY ALL CONDITIONS IN FIELD.

1 STAIRS - PLAN VIEW - DECKING, GUARDRAILS AND HANDRAILS
SCALE: 1/2" = 1'-0"



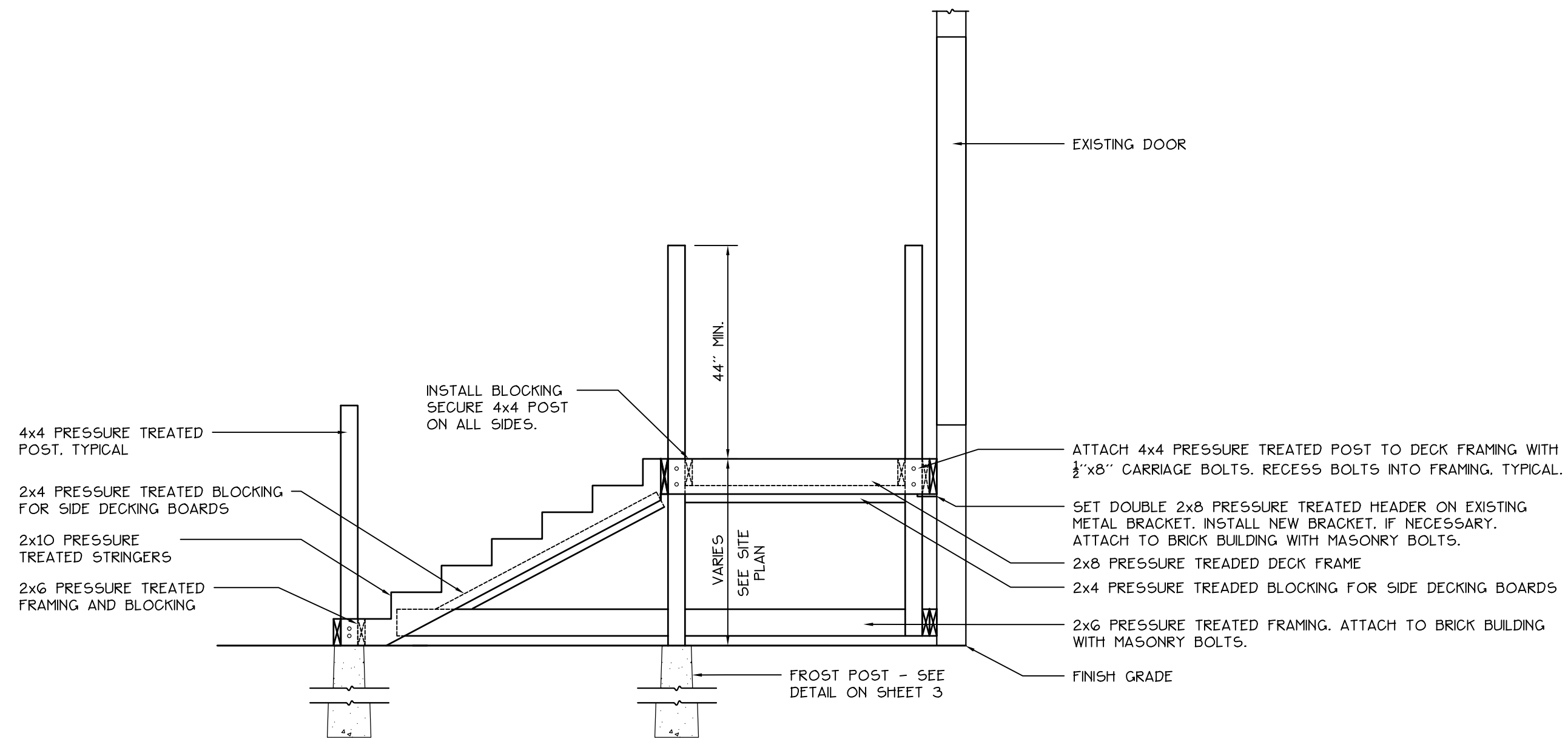
COMPOSITE MATERIAL TO BE MANUFACTURED BY AZEK BUILDING PRODUCTS, INC., OR APPROVED EQUAL. COLOR TO BE BROWNSTONE. SUBSTITUTIONS MUST BE APPROVED BY PORTLAND HOUSING AUTHORITY AND PROJECT LANDSCAPE ARCHITECT.

2 STAIRS - PLAN VIEW - DECKING, GUARDRAILS AND HANDRAILS
SCALE: 1/2" = 1'-0"

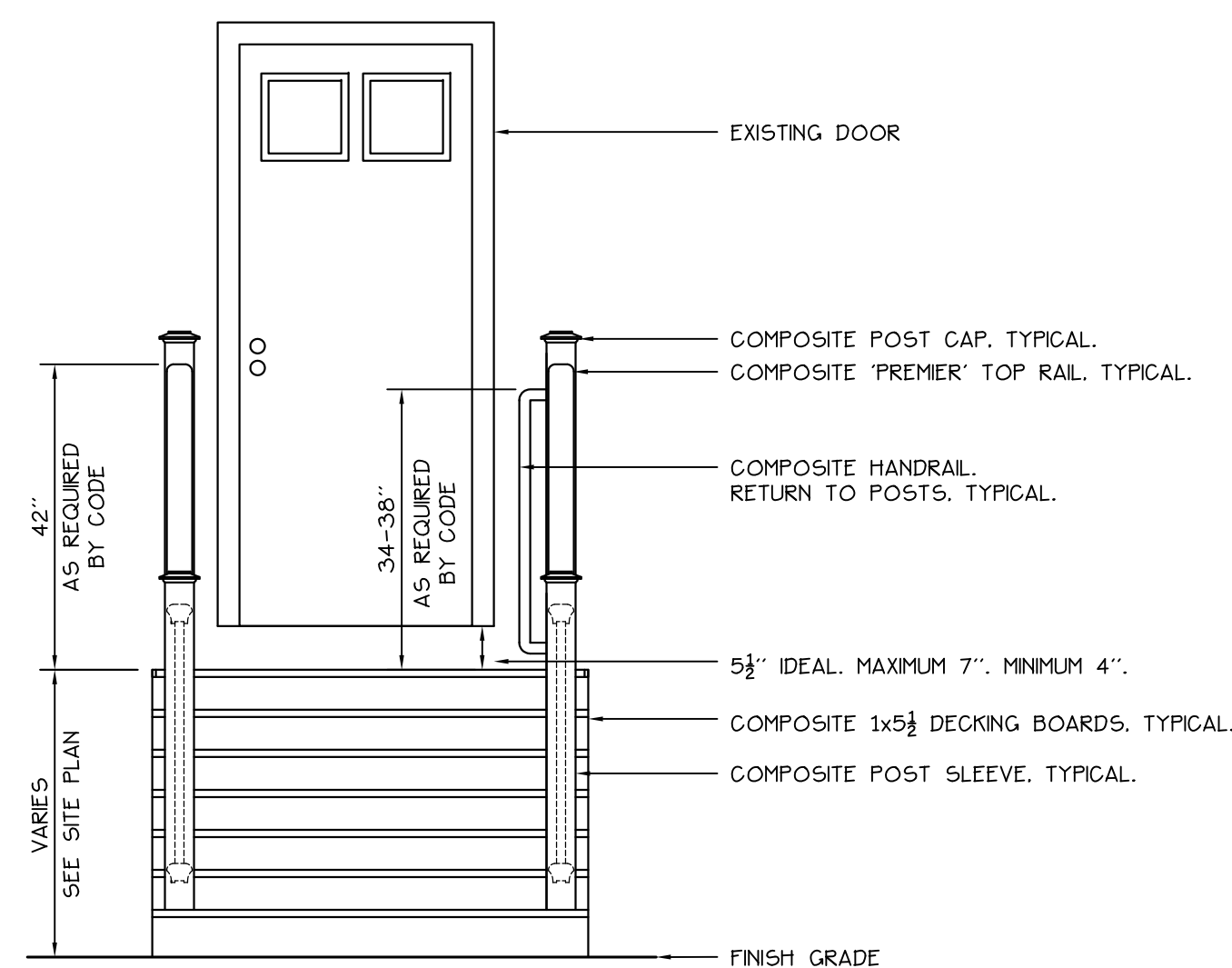


NUMBER OF TREADS AND RISERS VARIES. VERIFY ALL CONDITIONS IN FIELD.

3 STAIRS - FRONT VIEW - FRAMING AND FOOTINGS
SCALE: 1/2" = 1'-0"



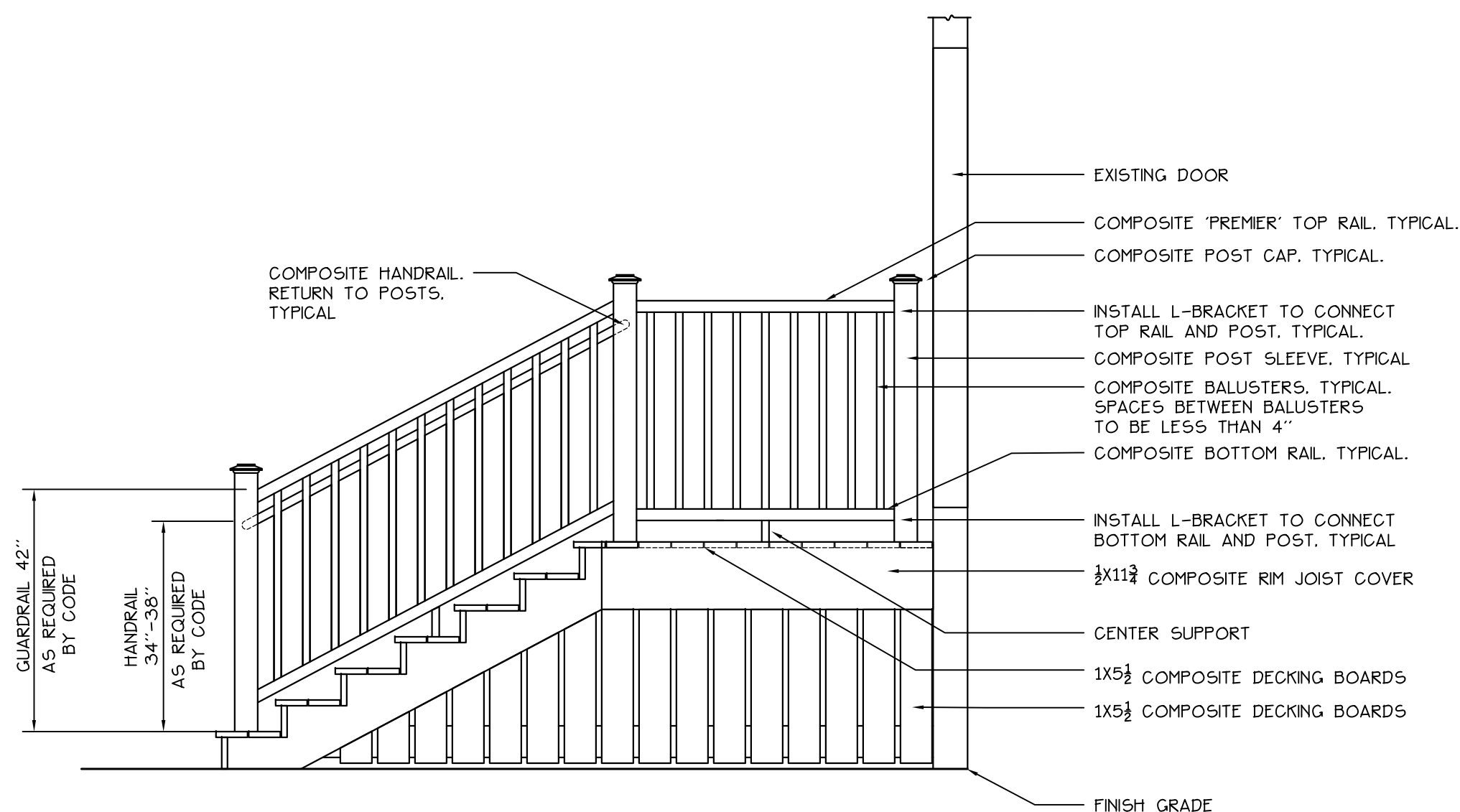
4 STAIRS - SIDE VIEW - FRAMING AND FOOTINGS
SCALE: 1/2" = 1'-0"



COMPOSITE MATERIAL TO BE MANUFACTURED BY AZEK BUILDING PRODUCTS, INC., OR APPROVED EQUAL. COLOR TO BE BROWNSTONE. SUBSTITUTIONS MUST BE APPROVED BY PORTLAND HOUSING AUTHORITY AND PROJECT LANDSCAPE ARCHITECT.

NUMBER OF TREADS AND RISERS VARIES. VERIFY ALL CONDITIONS IN FIELD.

5 STAIRS - FRONT VIEW - DECKING, GUARDRAILS AND HANDRAILS
SCALE: 1/2" = 1'-0"



6 STAIRS - SIDE VIEW - DECKING, GUARDRAILS AND HANDRAILS
SCALE: 1/2" = 1'-0"

Prepared For:
PORTLAND HOUSING AUTHORITY
14 Baxter Boulevard
Portland, Maine 04101
Contact: Mark Dromgoole
Tel: (207) 615-3044

Prepared By:
MITCHELL & ASSOCIATES
Landscape Architects
The Staples School
70 Center Street
Portland, Maine 04101
Tel: (207) 774-4427

FRONT STREET HOUSING DECK IMPROVEMENTS

Portland, Maine

Front Street

Date:
FEBRUARY 8, 2010

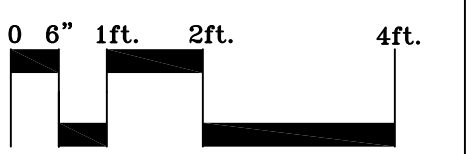
Issued For:
CONSTRUCTION BIDDING

Revisions:

Reproduction or reuse of this document without the expressed written consent of Mitchell & Associates is prohibited.

Title:
STAIR DETAILS

Scale: 1/2" = 1'-0"



North: Sheet No. 5