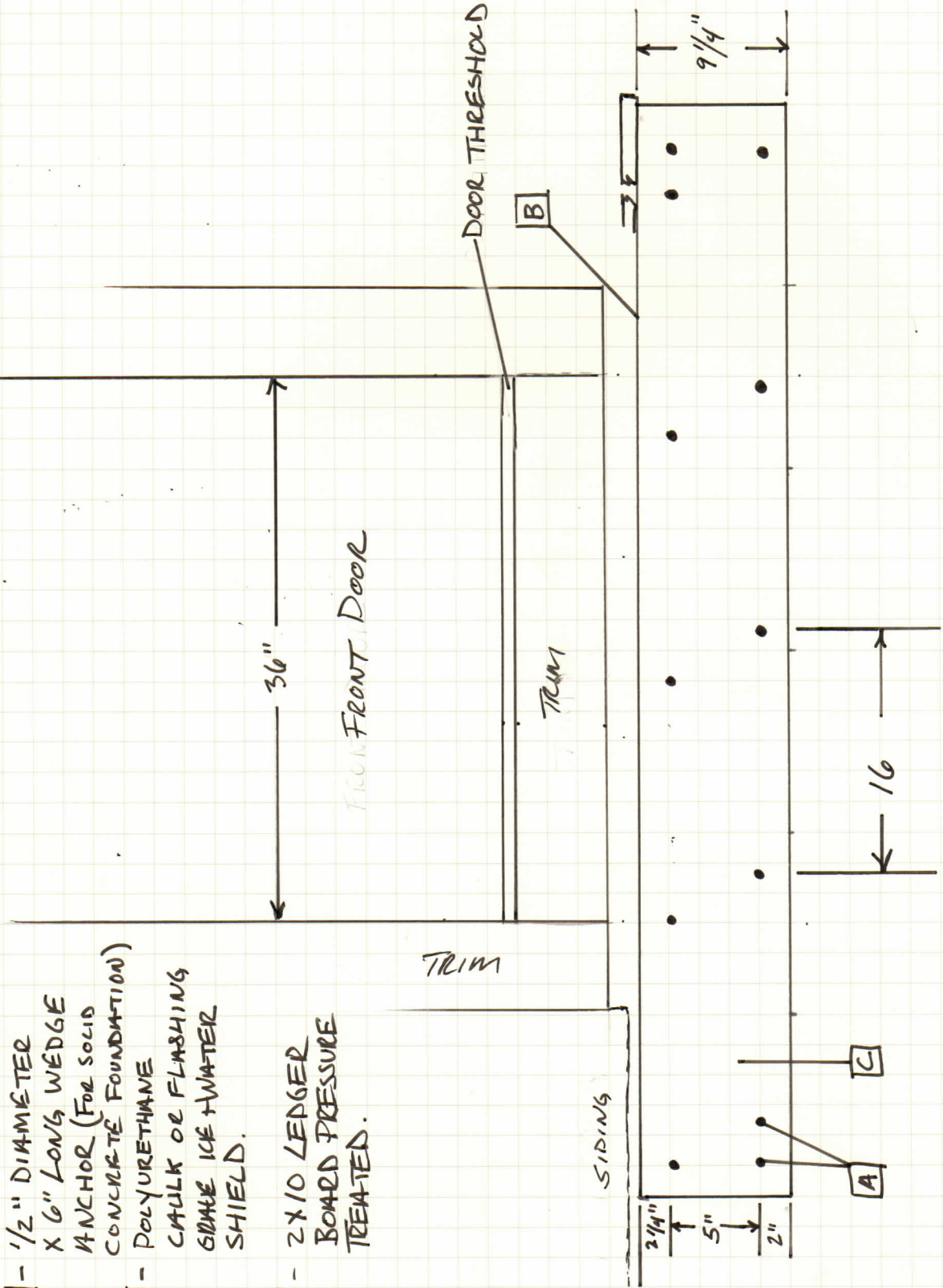


1/8" = 1ft



- A** - 1/2" DIAMETER X 6" LONG WEDGE ANCHOR (FOR SOLID CONCRETE FOUNDATION)
- B** - POLYURETHANE CAULK OR FLASHING GMAE ICE + WATER SHIELD.
- C** - 2X10 LEDGER BOARD PRESSURE TREATED.