

23. HVAC Equipment

Condenser units will be located on the roof of proposed buildings. There will be one condenser per unit. Please refer to Architectural Elevations for proposed location, and sequential cut sheets for product specifications.

Job Name:	Date:
System Reference:	



Indoor Unit: MFZ-KJ15NA-U1



Wireless Remote Controller



Outdoor Unit: MUFZ-KJ15NAHZ-U1

ACCESSORIES:

Indoor Unit

- Condensate Pump (BlueDiamond X87-711/721; 115/230V)
- Condensate Pump (Sauermann SI30-115/230; 115/230V)
- Anti-Allergy Enzyme Filter (MAC-408FT-E)
- Drain Pan Level Sensor (DPLS2)

Outdoor Unit

- Outdoor Mounting Pad (ULTRILITE1)
- 3-1/4" Mounting Base [Pair] (DSD-400P)
- Air Outlet Guide (MAC-886SG)
- Wall Mounting Bracket (QSWB2000M-1)

Controls

- Wireless Controller (MHK1)
- Wired Remote Controller PAR-32MAA (Requires MAC-333IF-E)
- Wireless Interface for kumo cloud™ (PAC-WHS01WF-E)
- Thermostat Interface (PAC-US444CN-1)

SPECIFICATIONS:

Rated Conditions (Capacity / Input)

Cooling ¹	Btu/h / W	15,000 / 1,120
Heating at 47° F ²	Btu/h / W	18,000 / 1,410

Capacity Range	Minimum	Maximum
Cooling ¹	Btu/h	5,300 / 19,000
Heating at 47° F ²	Btu/h	5,700 / 25,000
Heating at 17° F ³	Btu/h	- / 20,500
Heating at 5° F ⁴	Btu/h	- / 18,000

¹ Cooling | Indoor: 80° F (27° C) DB / 67° F (19° C) WB; Outdoor: 95° F (35° C) DB / 75° F (24° C) WB*
² Heating at 47° F | Indoor: 70° F (21° C) DB / 60° F (16° C) WB; Outdoor: 47° F (8° C) DB / 43° F (6° C) WB*
³ Heating at 17° F | Indoor: 70° F (21° C) DB / 60° F (16° C) WB; Outdoor: 17° F (-8° C) DB / 15° F (-9° C) WB*
⁴ Heating at 5° F | Indoor: 70° F (21° C) DB / 60° F (16° C) WB; Outdoor: 5° F (-15° C) DB / 5° F (-15° C) WB*
 * Rating Conditions per AHRI Standard:

Operating Conditions (Indoor Intake Air Temp.) (Max./ Min.)

Cooling ⁵	90° F (32° C) DB / 67° F (19° C) DB
Heating	80° F (27° C) DB / 70° F (21° C) DB

Operating Conditions (Outdoor Intake Air Temp.) (Max./ Min.)

Cooling ⁵	115 F (46° C) DB / 14° F (-10° C) DB
Heating	75° F (24° C) DB / -4° F (-20° C) DB**

⁵ Applications should be restricted to comfort cooling only; equipment cooling applications are not recommended for low ambient temperature conditions.
 ** System cuts out at -18° F (-28° C) to avoid thermistor error and automatically restarts at -14° F (-26° C).

AHRI Efficiency Ratings

SEER / HSPF	21.8 / 11.6
COP at 47° F / 17° F	3.7 / 2.71

Energy Star®	Yes
---------------------	-----

ENERGY STAR products are third-party certified by an EPA-recognized Certification Body.

Specifications are subject to change without notice.

Electrical		
Electrical Power Requirements	208 / 230V, 1-Phase, 60 Hz	
MCA: Indoor Outdoor	A	1 16
Recommended Fuse/Breaker Size	A	20

Indoor Unit		
Blower Motor ECM Output	0.62 F.L.A. 30 W	
SHF Moisture Removal	0.66 3.9 pt./h	
Field Drainpipe Size O.D.	In.(mm)	5/8 (15)

Outdoor Unit		
Compressor	DC INVERTER-driven Twin Rotary	
Fan Motor (ECM)	F.L.A.	0.93

Airflow Rate (Quiet - Lo - Med - Hi - Super Hi)			
Indoor (Cooling)	DRY	CFM	198-254-311-392-431
	WET		168-216-264-333-366
Indoor (Heating)	DRY		212-268-328-399-470
Outdoor			1,653 / 1,730

Sound Pressure Level (Quiet - Lo - Med - Hi - Super Hi)		
Indoor: Cooling Heating	dB(A)	28-33-38-43-47 29-35-40-45-49
Outdoor: Cooling Heating		51 55

Unit Dimensions		
Indoor Outdoor (H x W x D)	In.	23-5/8 x 29-17/32 x 8-15/32 34-5/8 x 33-1/16 x 13
		mm

Package Dimensions		
Indoor Outdoor (H x W x D)	In.	27-3/4 x 32-3/4 x 12 39 x 38-3/4 x 16-3/4
		mm

Unit/Package Weight		
Unit: Indoor Outdoor	Lbs.(kg)	33 (15) 124 (56)
Package: Indoor Outdoor	Lbs.(kg)	41 (18.5) 144 (65)

External Finish	
Indoor Outdoor	Munsell 1.0Y 9.2 / 0.2 Munsell No. 3Y 7.8 / 1.1

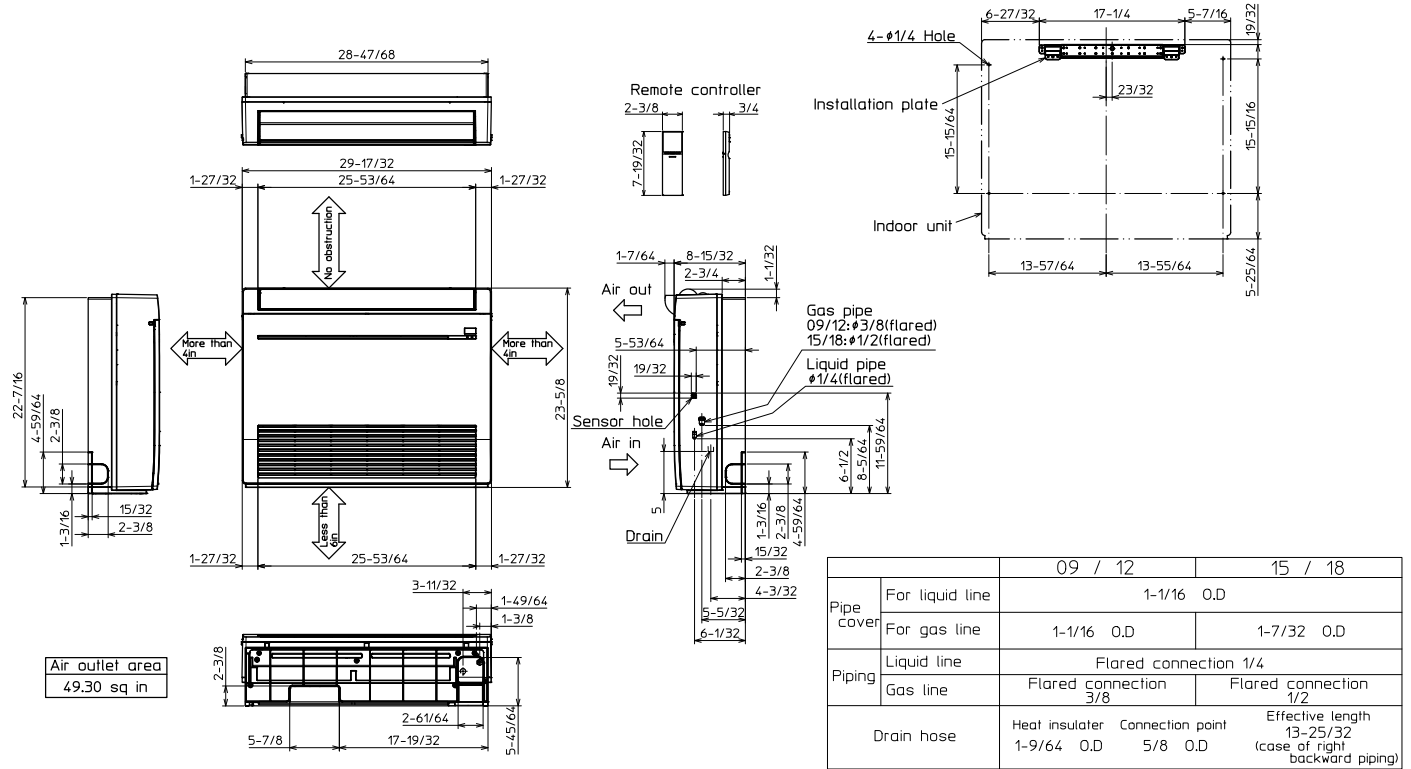
Refrigerant	R410A; 3 lb. 5 oz.
--------------------	--------------------

Refrigerant Piping (Flared)		
Liquid (High Pressure)	In.(mm)	1/4 (6.35)
Gas (Low Pressure)		1/2 (12.7)
Max. Total Refrigerant Pipe Length (Height Diff.)	Ft. (m)	50 (15)
Max. Total Refrigerant Pipe Length (Length.)		100 (30)

DIMENSIONS: MFZ-KJ15NA-U1 & MUFZ-KJ15NAHZ-U1

MFZ-KJ15NA-U1

Unit: in.

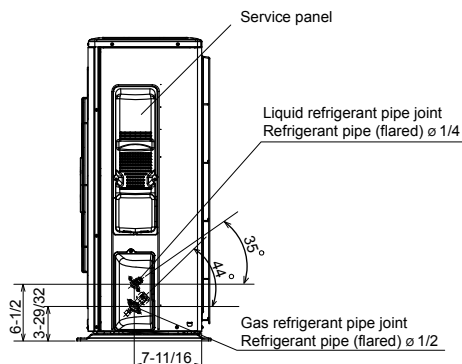
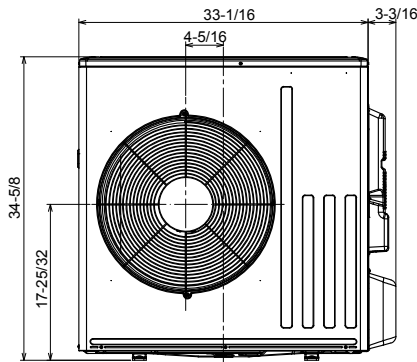
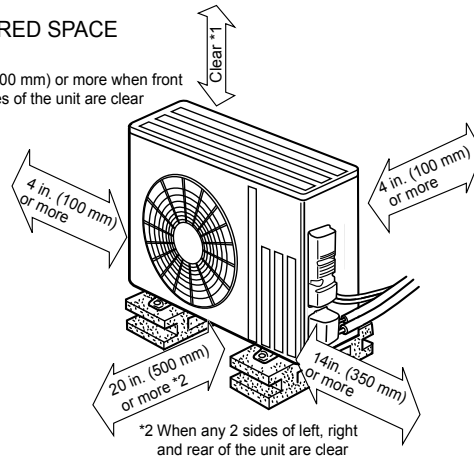
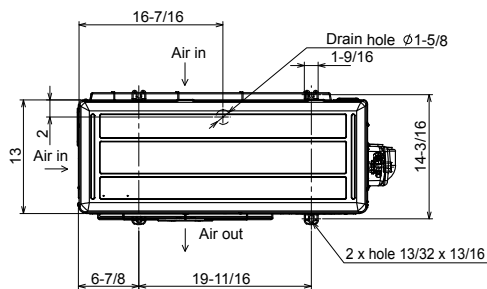


MUFZ-KJ15NAHZ-U1

Unit: in. (mm)

REQUIRED SPACE

*1 20 in. (500 mm) or more when front and sides of the unit are clear



COOLING & HEATING

1340 Satellite Boulevard, Suwanee, GA 30024
Toll Free: 800-433-4822 www.mehvac.com

