

PHA FRONT STREET DEVELOPMENT

37 & 63 Front Street
Portland, Maine 04103

PROJECT

FRONT STREET REDEVELOPMENT, LP

14 Baxter Boulevard
Portland, Maine 04101
P 207 773.4753

OWNER

utile

ARCHITECTURE + URBAN DESIGN

115 KINGSTON ST
BOSTON, MA 02111
P 617 423.7200 F 617 423.1414
utiledesign.com

ARCHITECT

Ransom Consulting, Inc.

400 Commercial Street, Suite 404
Portland, Maine 04101
P 207 772.2891 F 207 772.3284

CIVIL & GEOTECHNICAL

Carol Associates

217 Commercial Street, Suite 200
Portland, Maine 04101
P 207 772.1552 F 207 772.0712

LANDSCAPE

Allied Engineering

160 Veranda Street
Portland, Maine 04103
P 207 221.2260 F 207 221.2266

ME/PFP & STRUCTURAL

Thornton Tomasetti

386 Fore Street, Suite 401
Portland, Maine 04101
P 207 245.6560

SUSTAINABILITY

BUILDING 6 - SUMMARY

UNIT MIX	
1-BED:	12
2-BED:	00
3-BED:	05
4-BED:	03
5-BED:	00
TOTAL:	20

GROSS AREA	
GROUND FLOOR:	8,374 SF
LEVEL 2:	8,727 SF
LEVEL 3:	4,285 SF
TOTAL:	21,386 SF

ELEVATION KEY NOTES

- (3A) CAST-IN-PLACE CONCRETE STEM WALL W/ STUCCO FINISH, COLOR TBD.
- (3B) CAST-IN-PLACE CONCRETE LANDING
- (3C) CAST-IN-PLACE CONCRETE STEPS, AS REQ'D
- (3D) PRECAST CONCRETE COLUMNS
- (5A) PTD GALV. STEEL METAL GUARDS & HAND RAILS; COLOR TBD
- (7A) 4" PTD. CEMENTITIOUS CLAPBOARD, CUSTOM COLOR "A"
- (7B) 4" PTD. CEMENTITIOUS CLAPBOARD, CUSTOM COLOR "B"
- (7C) PTD CEMENTITIOUS PANELS W/ PAINTED PVC OR POLY-ASH BATTENS, SPACING TBD, CUSTOM COLOR "C"
- (7D) 4" PTD. CEMENTITIOUS CLAPBOARD, CUSTOM COLOR "D"
- (7E) 1X4 T&G V-JOINT EVIS A CLEAR GRADE, W/ 2-COAT TRANSPARENT ALKYD-OIL FINISH
- (7F) PTD PVC OR POLY-ASH TRIM, (4) COLOR OPTIONS TO MATCH SIDING
- (7G) FLAT LOCK ZINC-COATED-COPPER PANEL SIDING
- (7H) FACTORY FINISHED ALUMINUM FLASHING, TYP. AT RESIDENTIAL BUILDINGS
- (7I) ZCC FLASHING, TYP. AT COMMUNITY BUILDING
- (7K) STANDING SEAM METAL ROOF, SEAM SPACING TBD.
- (7L) STANDING SEAM ALUM. ROOFING
- (7M) PVC ROOFING, TYP. AT RESIDENTIAL BUILDINGS
- (8A) VINYL HIGH PERFORMANCE WINDOWS, CASEMENT & FIXED, TBD.
- (8B) PTD FIBERGLASS DOOR W/ TRANSOM & SIDELITE
- (8C) THERMALLY BROKEN ALUM. STOREFRONT SYSTEM W/ 1" LOW-E IGUS
- (10) PVDF COATED ALUM. SIGNAGE
- (23) ROOF MOUNTED CONDENSERS BEYOND

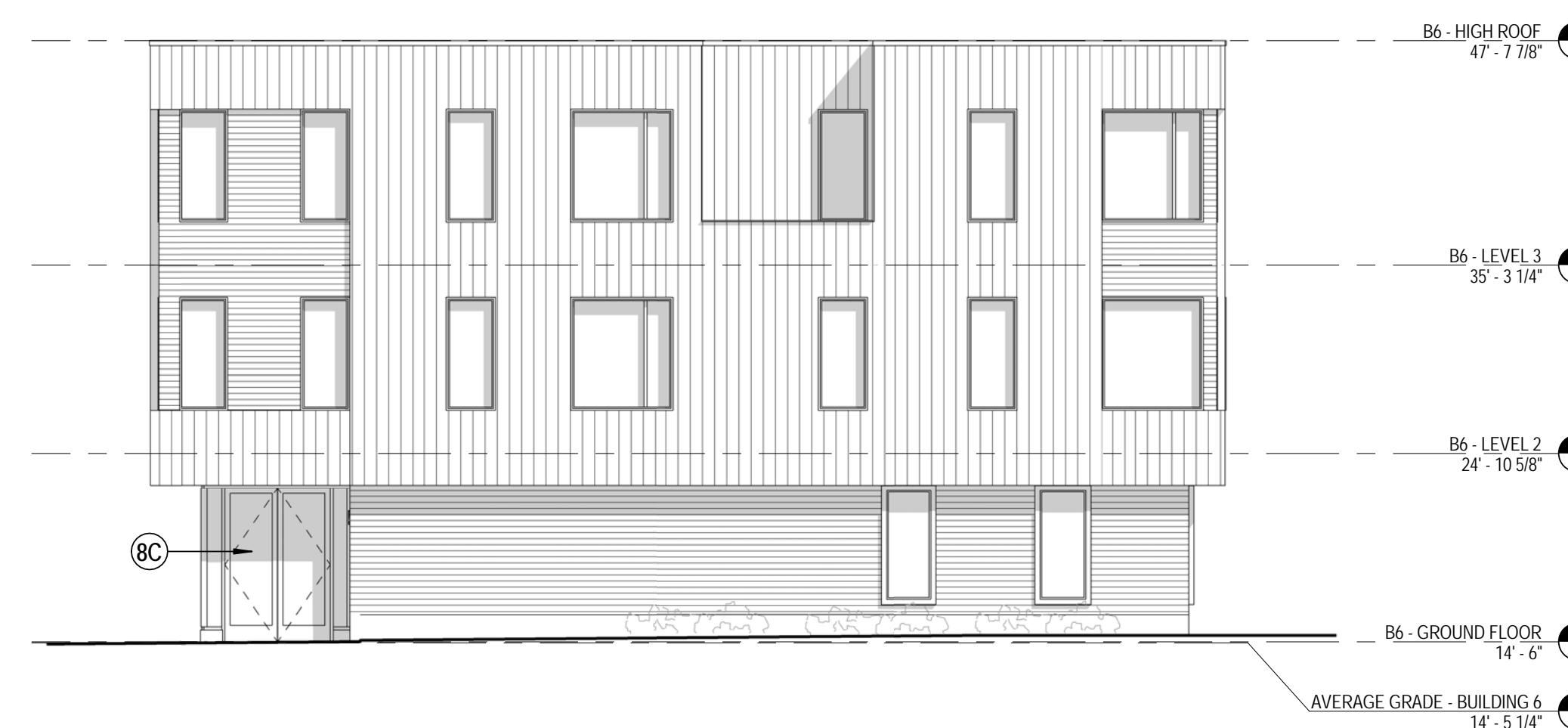
NOTE: SEE 1/2A.6 FOR TYPICAL BUILDING MATERIAL NOTES



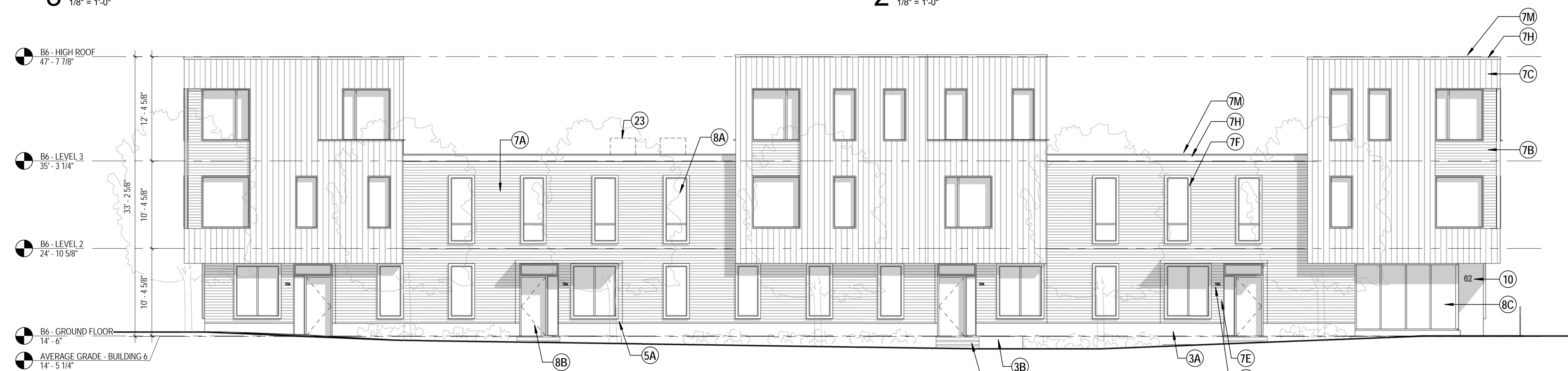
4 BUILDING 6 - NORTH ELEVATION
1/8" = 1'-0"



3 BUILDING 6 - WEST ELEVATION
1/8" = 1'-0"



2 BUILDING 6 - EAST ELEVATION
1/8" = 1'-0"



1 BUILDING 6 - SOUTH ELEVATION
1/8" = 1'-0"

STAMP

DATE REVISION

09/28/2017 PERMITTING

REVISIONS ON SHEET

SCALE UTILE PROJECT NUMBER
As indicated 15145

BUILDING ELEVATIONS

A-2.6