

PHA FRONT STREET DEVELOPMENT

37 & 63 Front Street  
Portland, Maine 04103

PROJECT

FRONT STREET REDEVELOPMENT, LP

14 Baxter Boulevard  
Portland, Maine 04101  
P 207 773.4753

OWNER

**utile**  
ARCHITECTURE + URBAN DESIGN

115 KINGSTON ST  
BOSTON, MA 02111  
P 617 423.7200 F 617 423.1414  
utiledesign.com

ARCHITECT

Ransom Consulting, Inc.

400 Commercial Street, Suite 404  
Portland, Maine 04101  
P 207 772.2891 F 207 772.3284

CIVIL & GEOTECHNICAL

Carol Associates

217 Commercial Street, Suite 200  
Portland, Maine 04101  
P 207 772.1552 F 207 772.0712

LANDSCAPE

Allied Engineering

160 Veranda Street  
Portland, Maine 04103  
P 207 221.2260 F 207 221.2266

ME/P/FP & STRUCTURAL

Thornton Tomasetti

386 Fore Street, Suite 401  
Portland, Maine 04101  
P 207 245.6560

SUSTAINABILITY

**BUILDING 5 - SUMMARY**

UNIT MIX	
1-BED:	08
2-BED:	04
3-BED:	02
4-BED:	02
5-BED:	03
TOTAL:	19

GROSS AREA	
GROUND FLOOR:	9,147 SF
LEVEL 2:	9,447 SF
LEVEL 3:	4,020 SF
TOTAL:	22,614 SF

**ELEVATION KEY NOTES**

- 3A CAST-IN-PLACE CONCRETE STEM WALL W/ STUCCO FINISH, COLOR TBD.
- 3B CAST-IN-PLACE CONCRETE LANDING
- 3C CAST-IN-PLACE CONCRETE STEPS, AS RECD
- 3D PRECAST CONCRETE COLUMNS
- 5A PTD GALV. STEEL METAL GUARDS & HAND RAILS: COLOR TBD
- 7A 4" PTD. CEMENTITIOUS CLAPBOARD, CUSTOM COLOR "A"
- 7B 4" PTD. CEMENTITIOUS CLAPBOARD, CUSTOM COLOR "B"
- 7C PTD CEMENTITIOUS PANELS W/ PAINTED PVC OR POLY-ASH BATTENS, SPACING TBD. CUSTOM COLOR "C"
- 7D 4" PTD. CEMENTITIOUS CLAPBOARD, CUSTOM COLOR "D"
- 7E 1X4 T&G V-JOINT EVIS A CLEAR GRADE, W/ 2-COAT TRANSPARENT ALKYD-OIL FINISH
- 7F PTD PVC OR POLY-ASH TRIM, (4) COLOR OPTIONS TO MATCH SIDING
- 7G FLAT LOCK ZINC-COATED-COPPER PANEL SIDING
- 7H FACTORY FINISHED ALUMINUM FLASHING, TYP. AT RESIDENTIAL BUILDINGS
- 7J ZCC FLASHING, TYP. AT COMMUNITY BUILDING
- 7K STANDING SEAM METAL ROOF, SEAM SPACING TBD.
- 7L STANDING SEAM ALUM. ROOFING
- 7M PVC ROOFING, TYP. AT RESIDENTIAL BUILDINGS
- 8A VINYL HIGH PERFORMANCE WINDOWS, CASEMENT & FIXED, TBD.
- 8B PTD FIBERGLASS DOOR W/ TRANSOM & SIDELITE
- 8C THERMALLY BROKEN ALUM. STOREFRONT SYSTEM W/ 1" LOW-E IGUS
- 10 PVDf COATED ALUM. SIGNAGE
- 23 ROOF MOUNTED CONDENSERS BEYOND

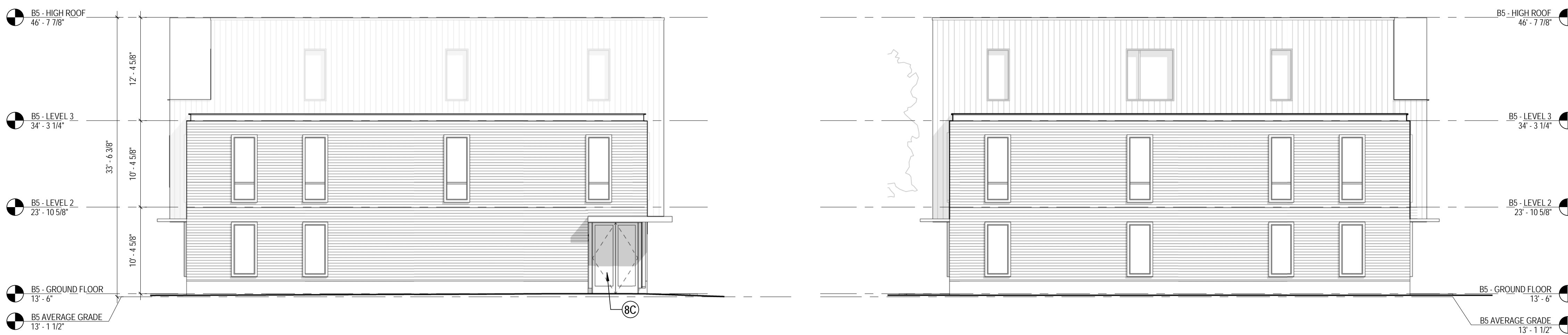
NOTE: SEE 3/A2.5 FOR TYPICAL BUILDING MATERIAL NOTES



**4 BUILDING 5 - NORTH ELEVATION**  
1/8" = 1'-0"



**3 BUILDING 5 - SOUTH ELEVATION**  
1/8" = 1'-0"



**2 BUILDING 5 - WEST ELEVATION**  
1/8" = 1'-0"

**1 BUILDING 5 - EAST ELEVATION**  
1/8" = 1'-0"

STAMP

DATE REVISION

09/28/2017 PERMITTING

REVISIONS ON SHEET

SCALE UTILE PROJECT NUMBER  
As Indicated 15145

BUILDING ELEVATIONS

**A-2.5**