

PHA FRONT STREET DEVELOPMENT

37 & 63 Front Street  
Portland, Maine 04103

PROJECT

FRONT STREET REDEVELOPMENT, LP

14 Baxter Boulevard  
Portland, Maine 04101  
P 207 773.4753

OWNER

**utile**  
ARCHITECTURE + URBAN DESIGN

115 KINGSTON ST  
BOSTON, MA 02111  
P 617 423.7200 F 617 423.1414  
utiledesign.com

ARCHITECT

**Ransom Consulting, Inc.**

400 Commercial Street, Suite 404  
Portland, Maine 04101  
P 207 772.2891 F 207 772.3284

CIVIL & GEOTECHNICAL

**Carol Associates**

217 Commercial Street, Suite 200  
Portland, Maine 04101  
P 207 772.1552 F 207 772.0712

LANDSCAPE

**Allied Engineering**

160 Veranda Street  
Portland, Maine 04103  
P 207 221.2260 F 207 221.2266

ME/PFP & STRUCTURAL

**Thornton Tomasetti**

386 Fore Street, Suite 401  
Portland, Maine 04101  
P 207 245.6560

SUSTAINABILITY

STAMP

DATE REVISION

09/28/2017 PERMITTING

REVISIONS ON SHEET

SCALE UTILITE PROJECT NUMBER  
As Indicated 15145

BUILDING ELEVATIONS

**A-2.2**

**BUILDING 2 - SUMMARY**

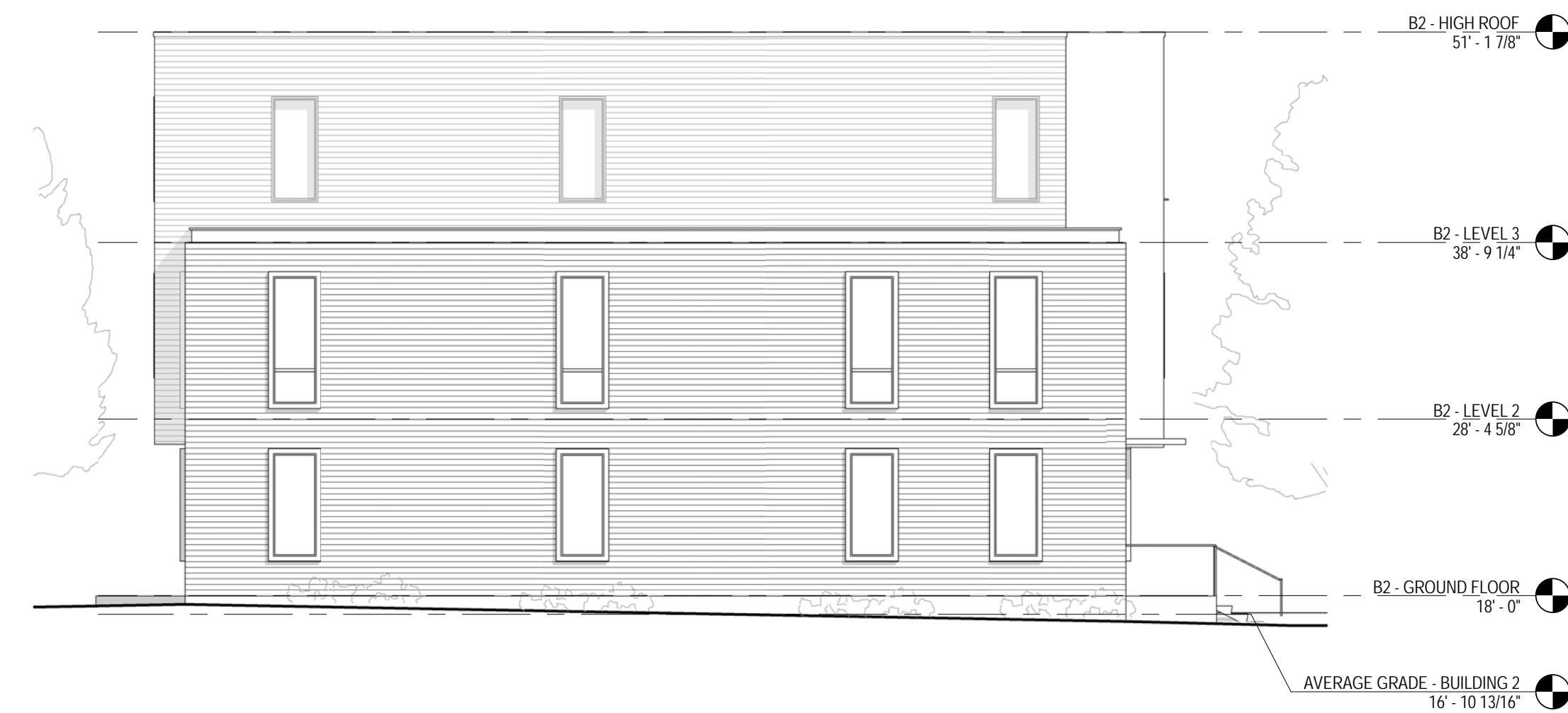
UNIT MIX	
1-BED:	05
2-BED:	03
3-BED:	03
4-BED:	01
5-BED:	01
TOTAL:	13

GROSS AREA	
GROUND FLOOR:	6,140 SF
LEVEL 2:	6,351 SF
LEVEL 3:	2,361 SF
TOTAL:	14,852 SF

**ELEVATION KEY NOTES**

- (3A) CAST-IN-PLACE CONCRETE STEM WALL W/ STUCCO FINISH, COLOR TBD.
- (3B) CAST-IN-PLACE CONCRETE LANDING
- (3C) CAST-IN-PLACE CONCRETE STEPS, AS REQ'D
- (3D) PRECAST CONCRETE COLUMNS
- (5A) PTD GALV. STEEL METAL GUARDS & HAND RAILS, COLOR TBD
- (7A) 4" PTD. CEMENTITIOUS CLAPBOARD, CUSTOM COLOR "A"
- (7B) 4" PTD. CEMENTITIOUS CLAPBOARD, CUSTOM COLOR "B"
- (7C) PTD CEMENTITIOUS PANELS W/ PAINTED PVC OR POLY-ASH BATTENS, SPACING TBD, CUSTOM COLOR "C"
- (7D) 4" PTD. CEMENTITIOUS CLAPBOARD, CUSTOM COLOR "D"
- (7E) 1X4 T&G V-JOINT EVIS A CLEAR GRADE, W/ 2-COAT TRANSPARENT ALKYD-OIL FINISH
- (7F) PTD PVC OR POLY-ASH TRIM, (4) COLOR OPTIONS TO MATCH SIDING
- (7G) FLAT LOCK ZINC-COATED-COPPER PANEL SIDING
- (7H) FACTORY FINISHED ALUMINUM FLASHING, TYP. AT RESIDENTIAL BUILDINGS
- (7J) ZCC FLASHING, TYP. AT COMMUNITY BUILDING
- (7K) STANDING SEAM METAL ROOF, SEAM SPACING TBD.
- (7L) STANDING SEAM ALUM. ROOFING
- (7M) PVC ROOFING, TYP. AT RESIDENTIAL BUILDINGS
- (8A) VINYL HIGH PERFORMANCE WINDOWS, CASEMENT & FIXED, TBD.
- (8B) PTD FIBERGLASS DOOR W/ TRANSOM & SIDELITE
- (8C) THERMALLY BROKEN ALUM. STOREFRONT SYSTEM W/ 1" LOW-E IGUS
- (10) PVDF COATED ALUM. SIGNAGE
- (23) ROOF MOUNTED CONDENSERS BEYOND

NOTE: SEE 3/A2.2 FOR TYPICAL BUILDING MATERIAL NOTES



**4 BUILDING 2 - EAST ELEVATION**  
1/8" = 1'-0"



**3 BUILDING 2 - NORTH ELEVATION**  
1/8" = 1'-0"



**2 BUILDING 2 - SOUTH ELEVATION**  
1/8" = 1'-0"

**1 BUILDING 2 - WEST ELEVATION**  
1/8" = 1'-0"