

PHA FRONT STREET DEVELOPMENT

37 & 63 Front Street
Portland, Maine 04103

PROJECT

FRONT STREET REDEVELOPMENT, LP

14 Baxter Boulevard
Portland, Maine 04101
P 207 773.4753

OWNER

utile

ARCHITECTURE + URBAN DESIGN

115 KINGSTON ST
BOSTON, MA 02111
P 617 423.7200 F 617 423.1414
utilidesign.com

ARCHITECT

Ransom Consulting, Inc.

400 Commercial Street, Suite 404
Portland, Maine 04101
P 207 772.2891 F 207 772.3284

CIVIL & GEOTECHNICAL

Carol Associates

217 Commercial Street, Suite 200
Portland, Maine 04101
P 207 772.1552 F 207 772.0712

LANDSCAPE

Allied Engineering

160 Veranda Street
Portland, Maine 04103
P 207 221.2260 F 207 221.2266

ME/PFP & STRUCTURAL

Thornton Tomasetti

386 Fore Street, Suite 401
Portland, Maine 04101
P 207 245.6560

SUSTAINABILITY

BUILDING 1 - SUMMARY

UNIT MIX

1-BED:	07
2-BED:	03
3-BED:	04
4-BED:	00
5-BED:	01
TOTAL:	15

GROSS AREA

GROUND FLOOR:	8,786 SF
LEVEL 2:	6,452 SF
LEVEL 3:	3,812 SF
TOTAL:	19,050 SF

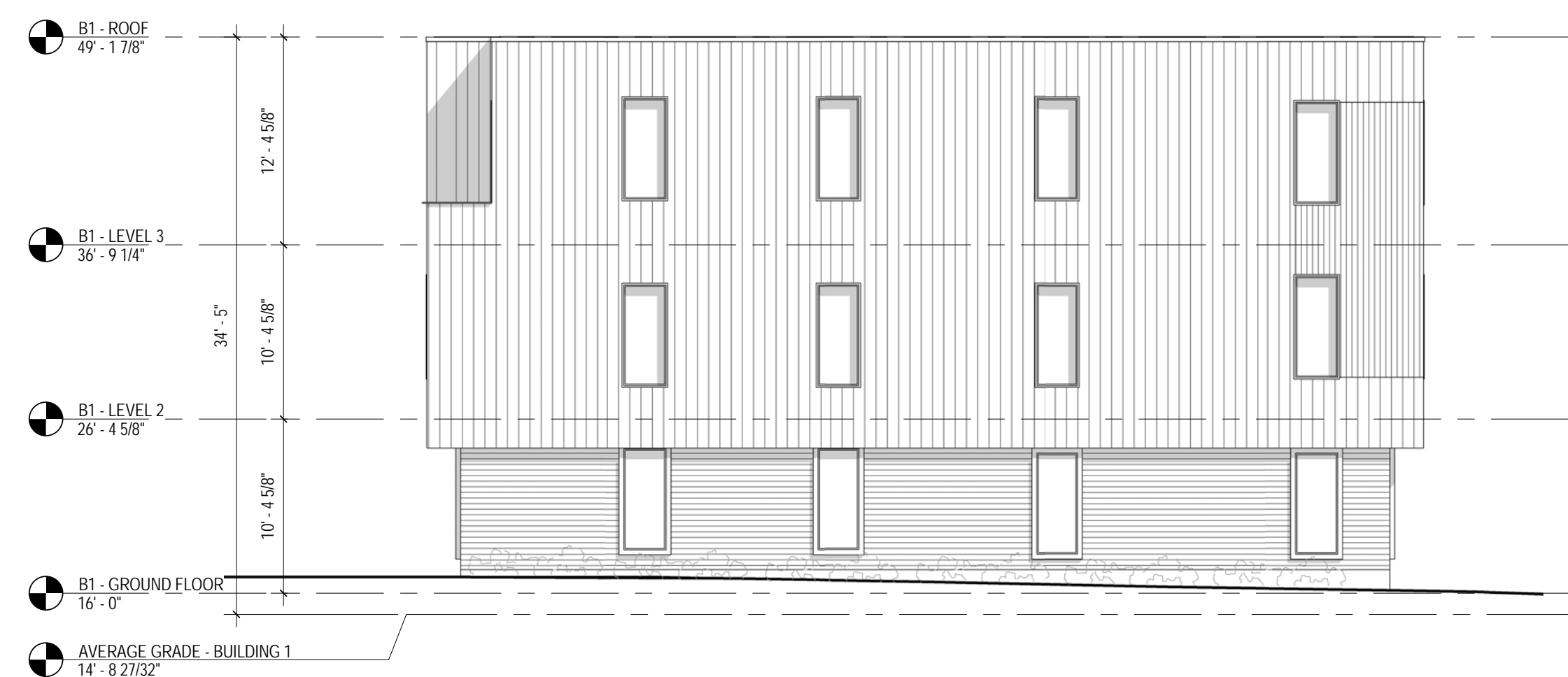
ELEVATION KEY NOTES

- 3A CAST-IN-PLACE CONCRETE STEM WALL W/ STUCCO FINISH, COLOR TBD.
- 3B CAST-IN-PLACE CONCRETE LANDING
- 3C CAST-IN-PLACE CONCRETE STEPS, AS REQ'D
- 3D PRECAST CONCRETE COLUMNS
- 5A PTD GALV. STEEL METAL GUARDS & HAND RAILS, COLOR TBD
- 7A 4" PTD. CEMENTITIOUS CLAPBOARD, CUSTOM COLOR "A"
- 7B 4" PTD. CEMENTITIOUS CLAPBOARD, CUSTOM COLOR "B"
- 7C PTD CEMENTITIOUS PANELS W/ PAINTED PVC OR POLY-ASH BATTENS, SPACING TBD, CUSTOM COLOR "C"
- 7D 4" PTD. CEMENTITIOUS CLAPBOARD, CUSTOM COLOR "D"
- 7E 1X4 T&G V-JOINT EVIS A CLEAR GRADE, W/ 2-COAT TRANSPARENT ALKYD-OIL FINISH
- 7F PTD PVC OR POLY-ASH TRIM, (4) COLOR OPTIONS TO MATCH SIDING
- 7G FLAT LOCK ZINC-COATED-COPPER PANEL SIDING
- 7H FACTORY FINISHED ALUMINUM FLASHING, TYP. AT RESIDENTIAL BUILDINGS
- 7J ZCC FLASHING, TYP. AT COMMUNITY BUILDING
- 7K STANDING SEAM METAL ROOF, SEAM SPACING TBD.
- 7L STANDING SEAM ALUM. ROOFING
- 7M PVC ROOFING, TYP. AT RESIDENTIAL BUILDINGS
- 8A VINYL HIGH PERFORMANCE WINDOWS, CASEMENT & FIXED, TBD.
- 8B PTD FIBERGLASS DOOR W/ TRANSOM & SIDELITE
- 8C THERMALLY BROKEN ALUM. STOREFRONT SYSTEM W/ 1" LOW-E IGUS
- 10 PVDF COATED ALUM. SIGNAGE
- 23 ROOF MOUNTED CONDENSERS BEYOND

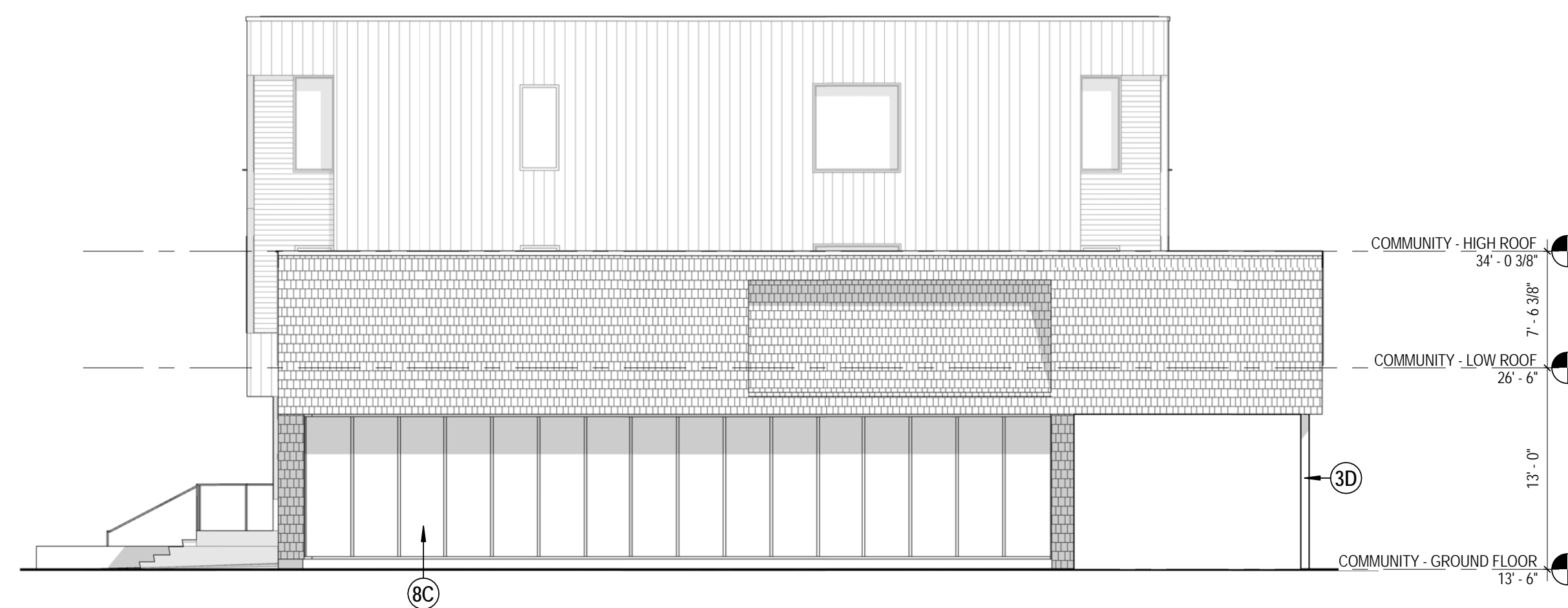
NOTE: SEE 1/A2.1 FOR TYPICAL BUILDING MATERIAL NOTES



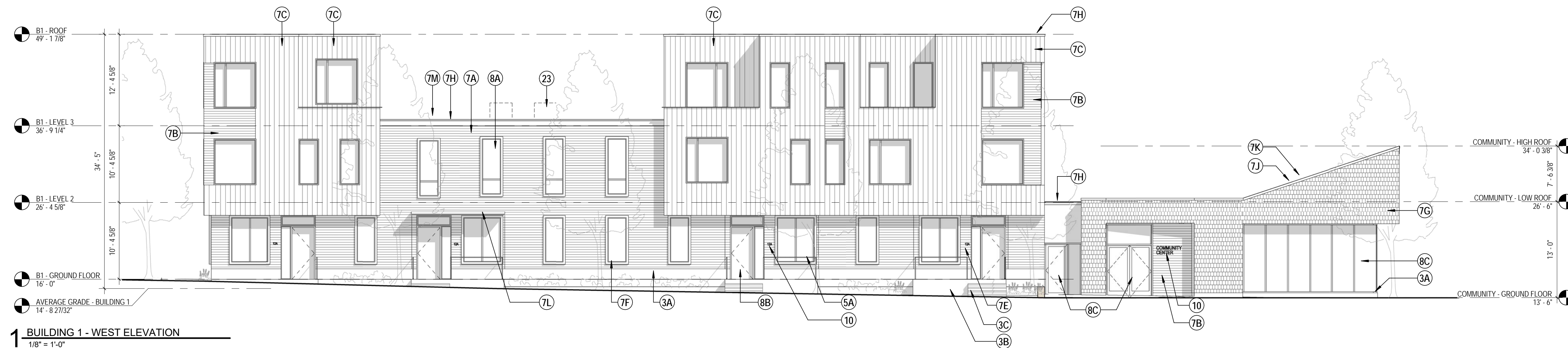
4 BUILDING 1 - EAST ELEVATION
1/8" = 1'-0"



3 BUILDING 1 - NORTH ELEVATION
1/8" = 1'-0"



2 BUILDING 1 - SOUTH ELEVATION
1/8" = 1'-0"



1 BUILDING 1 - WEST ELEVATION
1/8" = 1'-0"

REVISIONS ON SHEET

DATE	REVISION
09/28/2017	PERMITTING

SCALE: As indicated
UTILITE PROJECT NUMBER: 15145

BUILDING ELEVATIONS

A-2.1