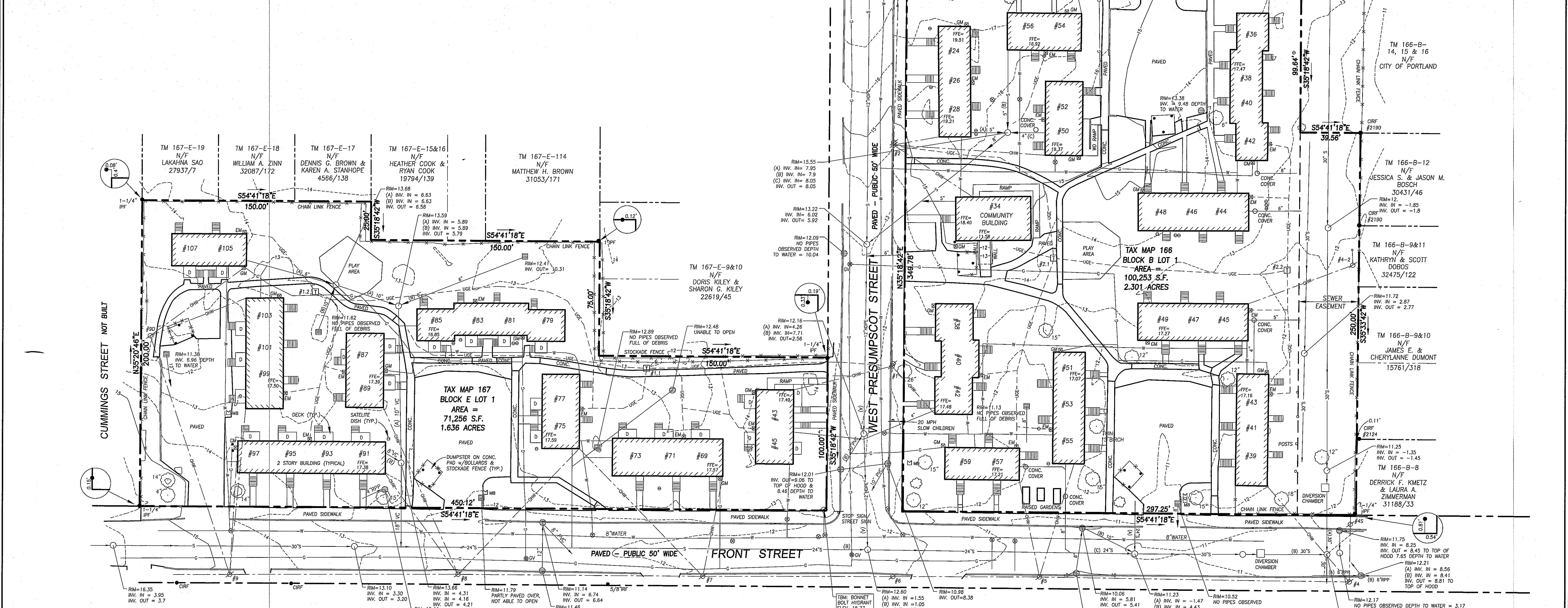


LEGEND

●	IRON PIPE OR ROD FOUND	— X —	FENCE
■	MONUMENT FOUND	—	CURB
○	UTILITY POLE	— OHW —	OVERHEAD WIRES
○	MANHOLE	— UGE —	UNDERGROUND ELECTRIC
⊗	ELECTRIC/GAS METER	— W —	WATER LINE
⊕	SIGN	— G —	GAS LINE
⊖	CATCH BASIN	— S —	SANITARY SEWER
⊙	HYDRANT	— 1' —	1" CONTOUR
⊗	WATER VALVE OR SHUTOFF	— D —	WOOD DECK
⊙	GAS VALVE	— CONC. —	CONCRETE
⊙	DECIDUOUS TREE	— CIRF —	CAPPED IRON ROD FOUND
⊙	SHURB/BUSH	— IPF/RF —	IRON PIPE OR ROD FOUND
⊙	TRANSFORMER	— INV. —	INVERT
⊙	BOLLARD	— FFE —	FINISHED FLOOR ELEVATION
⊙	MAILBOX	— N/F —	NOW OR FORMERLY
⊙	SATELLITE DISH	— 000/000 —	DEED BOOK AND PAGE

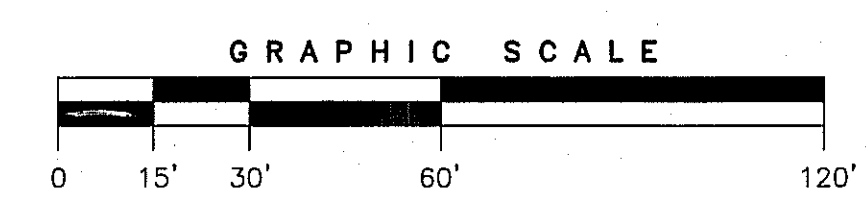


- PLAN REFERENCES**
- "PLAN SHOWING PROPOSED SCHEME OF STREETS AND LOTS OF LAND OF LW DYER, EAST DEERING MAINE" BY E.C. JORDAN RECORDED IN PLAN BOOK 7, PAGE 2.
 - "FRONT STREET TOWNHOUSES, PORTLAND, MAINE UTILITY PLAN, SANITARY SEWERS & STORMS DRAINS" DEC. 22, 1970 BY WRIGHT, PIERCE, BARNES & WYMAN, ENGINEERS.
 - "BOUNDARY SURVEY ON 904 BAXTER BOULEVARD, PORTLAND, MADE FOR OWNER OF RECORD BURTT AND DONNA WARREN" JUNE 02, 2004, REV. 1 7-2-04 BY OWEN HASKELL, INC.
 - "STANDARD BOUNDARY SURVEY OF PAYSON PARK, PORTLAND, MAINE MADE FOR CITY OF PORTLAND" FEB. 26, 2001, REV. 3 11-27-01 BY OWEN HASKELL, INC.
 - "AS-BUILT SURVEY AT 850 BAXTER BOULEVARD, PORTLAND, MAINE MADE FOR SEASIDE REHABILITATION & HEALTHCARE CENTER" MAY 15, 2012, REV. 1 06-19-12 BY OWEN HASKELL, INC.
 - "ILLSLEY STREET RECONSTRUCTION, STA. 4+50 TO STA. 9+00, PLAN AND PROFILE" JUNE 1995 CITY OF PORTLAND, MAINE PUBLIC WORKS DEPARTMENT ENGINEERING SECTION.
 - "PORTLAND WATER DISTRICT, PORTLAND, MAINE POLLUTION ABATEMENT FACILITIES, CONTRACT NO. 2, PRESUMPCOT ESTUARY INTERCEPTOR CROSS COUNTRY STA. 1+~ TO STA. 7+20"

- GENERAL NOTES**
- OWNER OF RECORD: PORTLAND HOUSING AUTHORITY, 14 BAXTER BOULEVARD, PORTLAND, MAINE. CUMBERLAND COUNTY REGISTRY OF DEEDS BOOK 3196 PAGE 834
 - BEARINGS ARE BASED ON MAINE STATE PLANE COORDINATE SYSTEM MAINE WEST NAD83, CITY POINT MDT0-PO-295-29 N:308183.18 E:2927410.833 AND T103-30-8 N:309584.611 E:2927511.4960 HELD.
 - ELEVATIONS ARE BASED ON NGVD 1929. BENCHMARK: CITY POINT MDT0-PO-295 ELEVATION 12.00'.
 - ON-SITE GAS COULD NOT BE LOCATED BY UNDERGROUND UTILITY MARKING COMPANY. GAS LINES SHOWN ARE APPROXIMATE CONTACT DIG-SAFE PRIOR TO ANY CONSTRUCTION.
 - ON-SITE WATER LINES TAKEN FROM PORTLAND WATER DISTRICT DRAWING NO. 67.

UTILITY NOTE

THE UNDERGROUND UTILITIES SHOWN HAVE BEEN LOCATED FROM FIELD SURVEY INFORMATION AND EXISTING DRAWINGS. THE SURVEYOR MAKES NO GUARANTEES THAT THE UNDERGROUND UTILITIES SHOWN COMPRISE ALL SUCH UTILITIES IN THE AREA, EITHER IN SERVICE OR ABANDONED. THE SURVEYOR FURTHER DOES NOT WARRANT THAT THE UNDERGROUND UTILITIES SHOWN ARE IN THE EXACT LOCATION INDICATED ALTHOUGH HE DOES CERTIFY THAT THEY ARE LOCATED AS ACCURATELY AS POSSIBLE FROM INFORMATION AVAILABLE. THE SURVEYOR HAS NOT PHYSICALLY LOCATED THE UNDERGROUND UTILITIES. CALL 1-888-DIGSAFE AT LEAST THREE BUSINESS DAYS BEFORE PERFORMING ANY CONSTRUCTION. DUE TO OSHA CONFINED SPACE REQUIREMENTS, ALL INVERTS AND PIPE SIZES MUST BE VERIFIED PRIOR TO ANY CONSTRUCTION.



CERTIFICATE

OWEN HASKELL, INC. HEREBY CERTIFIES THAT THIS PLAN IS BASED ON, AND THE RESULT OF, AN ON THE GROUND FIELD SURVEY AND THAT TO THE BEST OF OUR KNOWLEDGE, INFORMATION AND BELIEF, IT CONFORMS TO THE BOARD OF LICENSURE FOR PROFESSIONAL LAND SURVEYORS CURRENT STANDARDS OF PRACTICE, WITH THE EXCEPTION OF MARKERS NOT SET AT ALL CORNERS.

12-30-2015
DATE

John C. Schwanda
JOHN C. SCHWANDA, PLS NO. 1252

BOUNDARY AND TOPOGRAPHIC SURVEY
ON
FRONT STREET, ILLSELY STREET &
WEST PRESUMPCOT STREET, PORTLAND, MAINE
MADE FOR
PORTLAND HOUSING DEVELOPMENT CORP.
14 BAXTER BOULEVARD, PORTLAND, MAINE

OWEN HASKELL, INC.
PROFESSIONAL LAND SURVEYORS
390 U.S. ROUTE 1, UNIT 10, FALMOUTH, ME 04105 207-774-0424

Drawn By	RS	Date	DEC. 30, 2015	Job No.	2015-314P
Trace By	JLW	Scale	1" = 30'	Drwg. No.	1
Check By	JWS				
Book No.	FILE				