

**SITE PLAN**  
 SCALE: N.T.S.

**PROJECT DESCRIPTION**

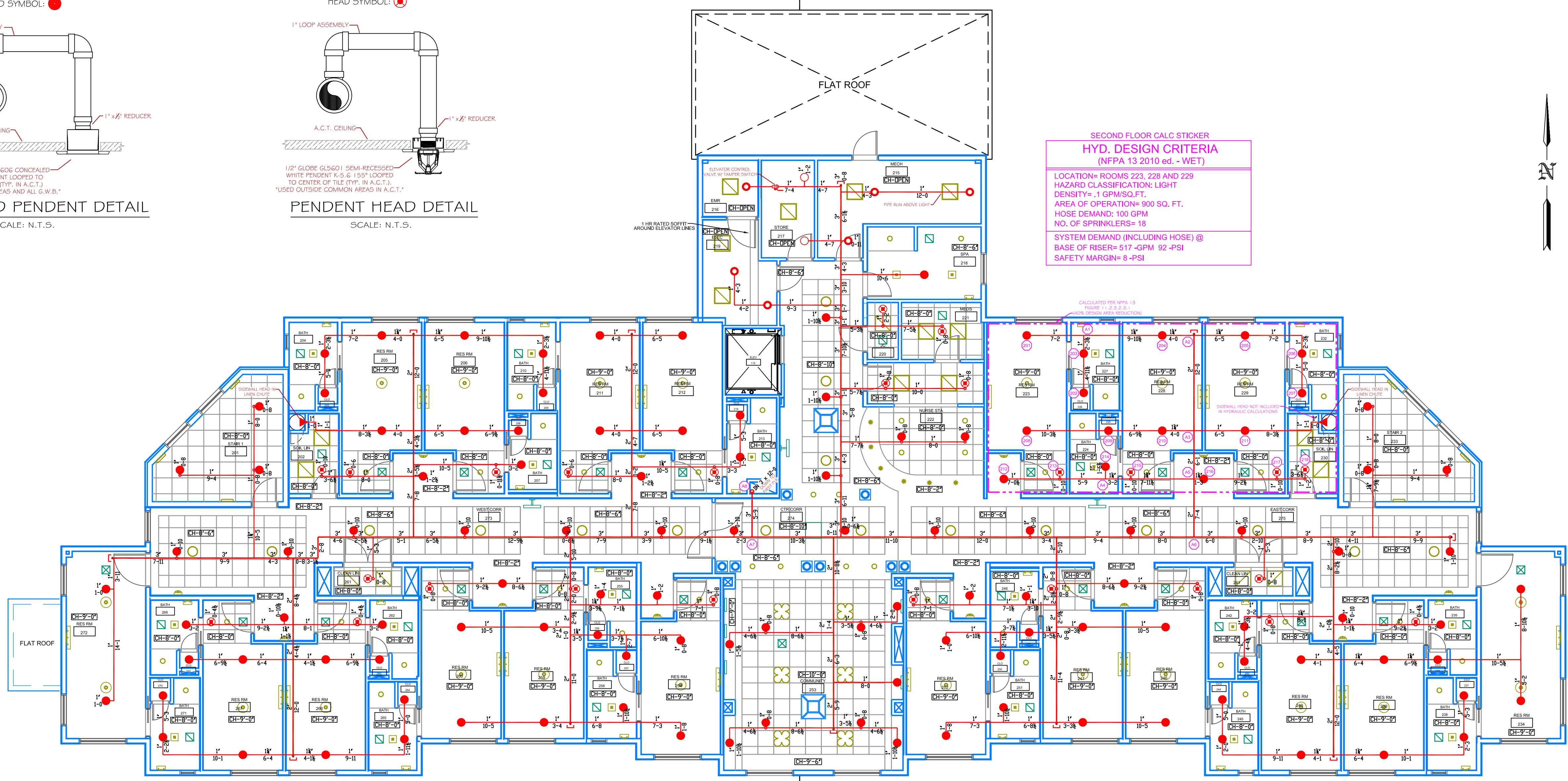
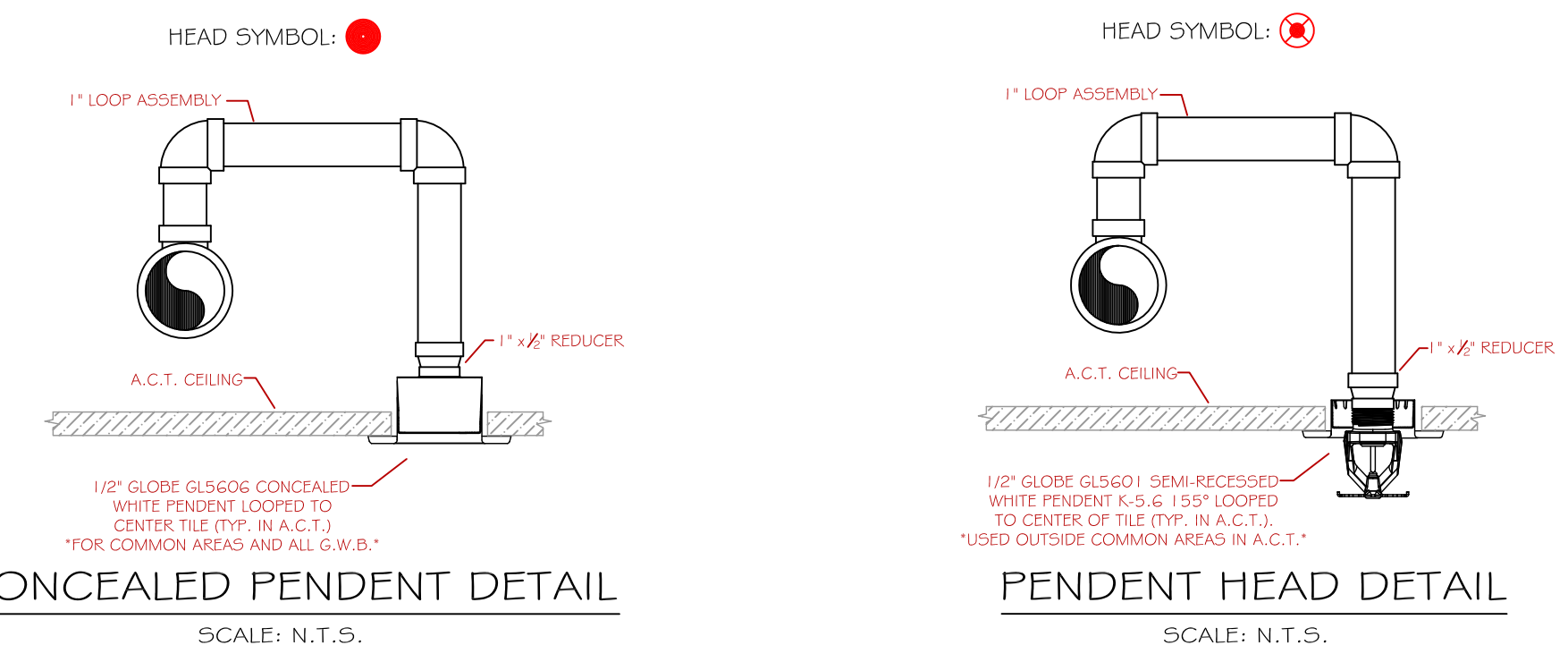
**BUILDING CONST:** THE BUILDING IS CONSTRUCTED OF TYPE II NON-COMBUSTIBLE CONSTRUCTION THROUGHOUT. THE STRUCTURE IS CONSTRUCTED WITH CONCRETE SLAB ON METAL DECK SUPPORTED BY STEEL COLUMNS, I-BEAMS, AND OPEN WEB STEEL JOISTS. INTERIOR WALLS ARE FRAMED WITH METAL STUDS AND FINISHED WITH G.W.B. INTERIOR CEILINGS ARE EITHER G.W.B. OR A.C.T. AS INDICATED. THE ROOF STRUCTURE IS A FLAT ROOF WITH SMALL PORTIONS OF NON-COMBUSTIBLE ATTIC SPACES. ALL ROOF CONSTRUCTION MATERIAL IS TO BE NON-COMBUSTIBLE FRAMING WITH FIRE RETARDANT PLYWOOD SHEATHING.

**BUILDING OCCUP:** THE BUILDING IS DESIGNED AS A MEDICAL / REHABILITATION FACILITY WITH SEVERAL PATIENT ROOMS.

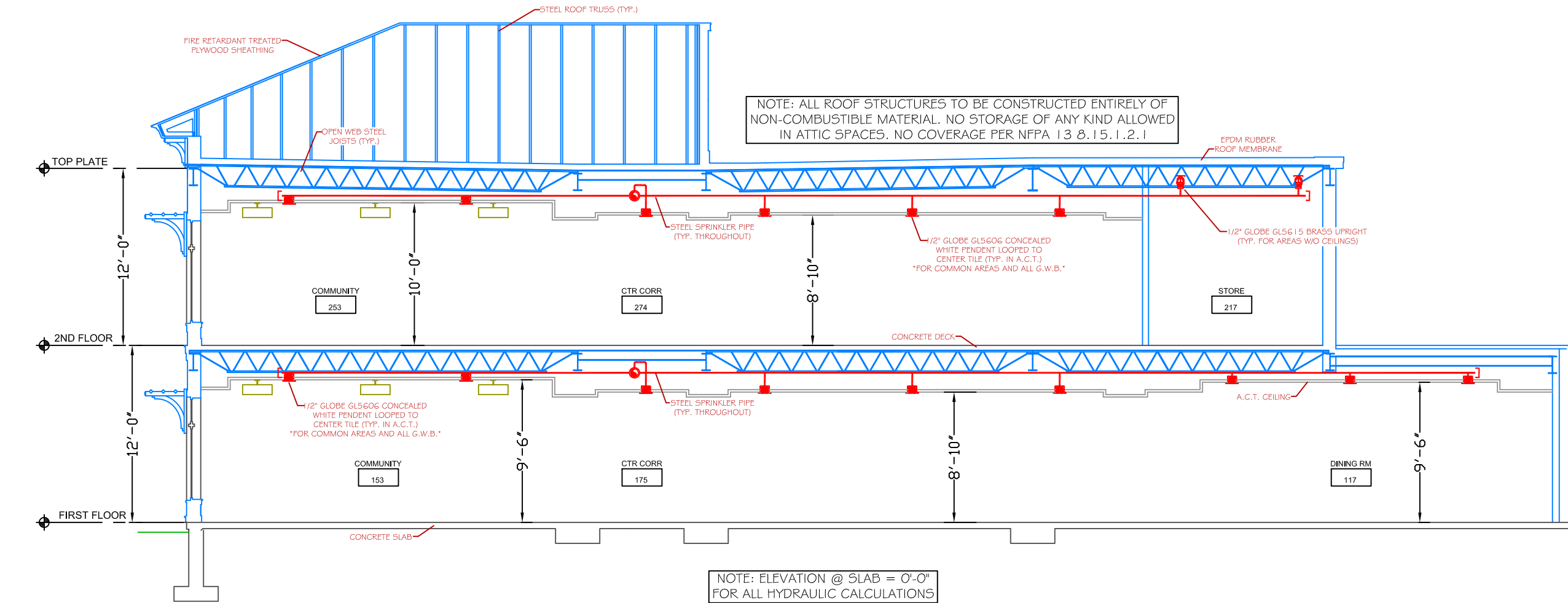
**SPRINKLER DESIGN:** THE BUILDING HAS BEEN DESIGNED USING A LIGHT HAZARD CLASSIFICATION THROUGHOUT WITH THE EXCEPTION OF THE SMALL MECHANICAL AND STORAGE ROOMS WHICH ARE DESIGNED USING AN ORDINARY HAZARD CLASSIFICATION. THE SPRINKLER SYSTEM HAS BEEN DESIGNED TO MEET ALL APPLICABLE CODES / STANDARDS OF AN NFPA 13 AUTOMATIC SPRINKLER SYSTEM AND THE SPECIFICATIONS PROVIDED BY FORESIDE ARCHITECTS.

**SECOND FLOOR CALC STICKER**  
**HYD. DESIGN CRITERIA**  
 (NFPA 13 2010 ed. - WET)

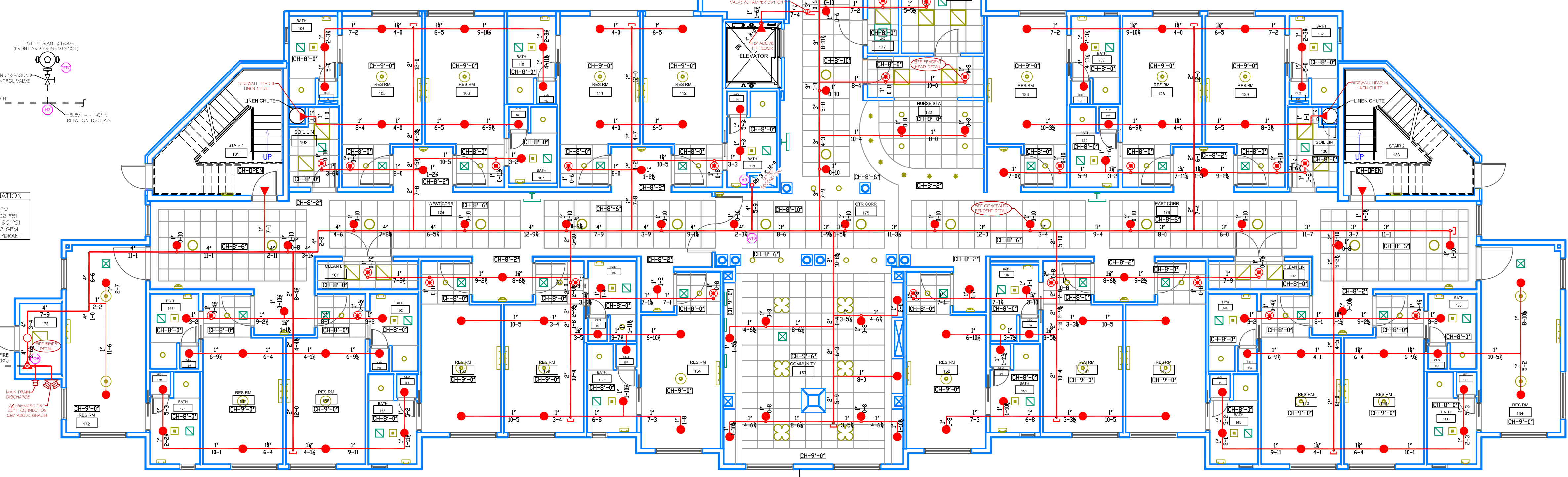
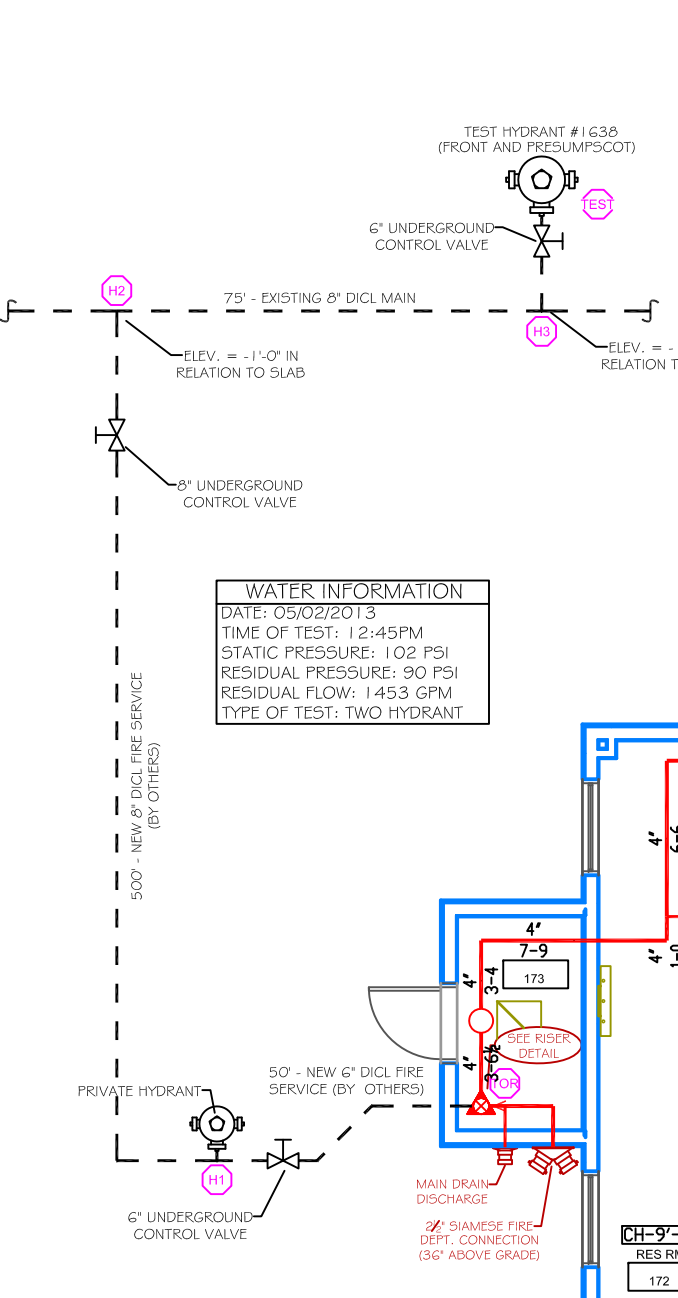
LOCATION: ROOMS 223, 228 AND 229  
 HAZARD CLASSIFICATION: LIGHT  
 DENSITY: 1.0 GPM/SQ. FT.  
 AREA OF OPERATION: 900 SQ. FT.  
 HOSE DEMAND: 100 GPM  
 NO. OF SPRINKLERS: 18  
 SYSTEM DEMAND (INCLUDING HOSE) @ BASE OF RISER: 517-GPM @ 92-PSI  
 SAFETY MARGIN: 8-PSI



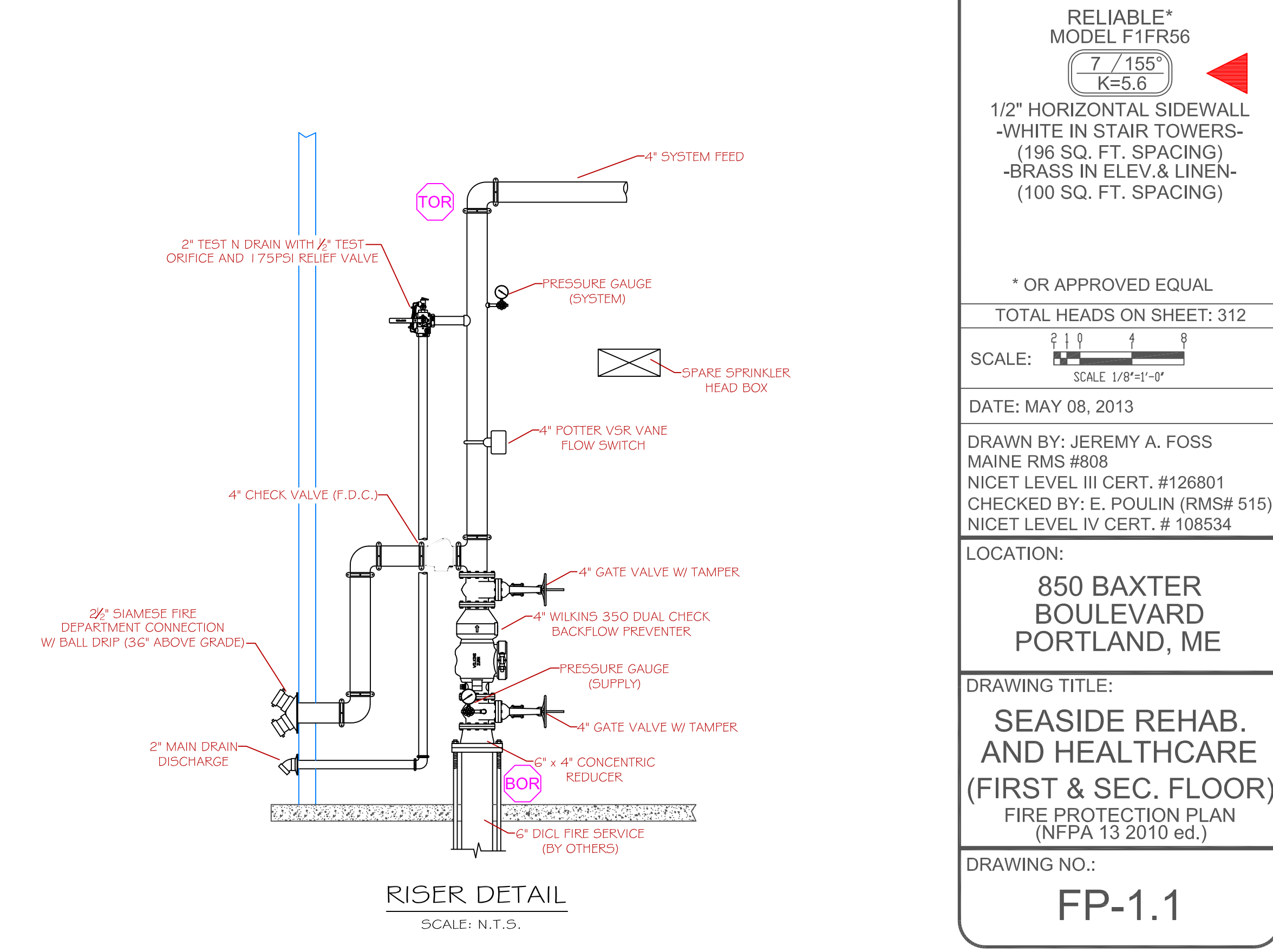
**SECOND FLOOR PLAN**  
 SCALE: 1/8" = 1'-0"  
 PROTECTED AREA: 10,002 SQ. FT.



**SECTION DETAIL "A"**  
 SCALE: N.T.S.



**FIRST FLOOR PLAN**  
 SCALE: 1/8" = 1'-0"  
 PROTECTED AREA: 10,595 SQ. FT.



- GLOBE\*  
MODEL GL5615  
6 / 200"  
K=5.6  
1/2" BRASS UPRIGHT  
(130 SQ. FT. SPACING)
- GLOBE\*  
MODEL GL5615  
4 / 155"  
K=5.6  
1/2" BRASS UPRIGHT  
(130 SQ. FT. SPACING)
- GLOBE\*  
MODEL GL5606  
245 / 155"  
K=5.6  
1/2" CONCEALED WHITE  
PENDENT  
(196 SQ. FT. SPACING - LIGHT)  
(130 SQ. FT. SPACING - ORD.)
- GLOBE\*  
MODEL GL5601  
50 / 155"  
K=5.6  
1/2" SEMI RECESSED WHITE  
PENDENT  
(196 SQ. FT. SPACING - LIGHT)  
(130 SQ. FT. SPACING - ORD.)
- RELIABLE\*  
MODEL F1FR56  
7 / 155"  
K=5.6  
1/2" HORIZONTAL SIDEWALL  
-WHITE IN STAIR TOWERS-  
(196 SQ. FT. SPACING)  
-BRASS IN ELEV. & LINEN-  
(100 SQ. FT. SPACING)

\* OR APPROVED EQUAL  
 TOTAL HEADS ON SHEET: 312  
 SCALE: 1/8" = 1'-0"  
 DATE: MAY 08, 2013  
 DRAWN BY: JEREMY A. FOSS  
 MAINE RMS #808  
 NICET LEVEL III CERT. #128801  
 CHECKED BY: E. POULIN (RMS# 515)  
 NICET LEVEL IV CERT. #108534  
 LOCATION:  
**850 BAXTER BOULEVARD**  
**PORTLAND, ME**  
 DRAWING TITLE:  
**SEASIDE REHAB. AND HEALTHCARE**  
**(FIRST & SEC. FLOOR)**  
**FIRE PROTECTION PLAN**  
 (NFPA 13 2010 ed.)  
 DRAWING NO.:  
**FP-1.1**