

**Fire System Information - Job#2174581**

FIRE SYSTEM NO.	Tag	TYPE	SIZE	FLOW POINTS	SYSTEM	INSTALLATION LOCATION ON HOOD
1		Ansul R102	3.0	6	Wall Mount	N/A

**Fire System Parts List Key**

FIRE SYSTEM NO.	TAG	KEY NUMBER - PART DESCRIPTION	QTY. BY FACTORY	QTY. BY DIST.
1		1 - 1 - AT - 3.0 TANK#1B - 3.0 Gallon SS Tank (for use with Automan Release, Actuator, or SS Enclosure (UL/JULC))	0	1
1		2 - 2 - AP - AR AUTOMAN RELEASE - Ansul Automan Mechanical Release (UL)429853 Tank sold separately	0	1
1		5 - 5 - LIQ-3.0 AGENT - Ansulex Low PH Wet Chemical Agent, 3 Gallon (UL) 79372	0	1
1		7 - 7 - 101-20 CARTRIDGE - Carbon Dioxide 101-20, 3 Gallon Cartridge (R-102)	0	1
1		10 - 10 - TLINK LINK - Test Link (1 test link)	0	1
1		11 - 11 - MICRO-SDA MICROSWITCH - Single Dual Electric Switch, One Standard Switch, One Alarm Duty Switch 437155	0	1
1		14 - 14 - 419336 NOZZLE - 1/4 Nozzle, Duct/Appliance (Replaces ANSUL Part# 419347, CAS Part# 419336) A0001266	1	0
1		16 - 16 - 419335 NOZZLE - 1/2 Nozzle, Plenum/Appliance (Replaces ANSUL Part# 419346, CAS Part# 419335) A0001265	1	0
1		22 - 22 - 419343 NOZZLE - 2120 Nozzle, Appliance (Replaces ANSUL Part# 419354, CAS Part# 419343) A0001273	1	0
1		24 - 24 - 419341 NOZZLE - 260 Nozzle, Appliance (Replaces ANSUL Part# 419352, CAS Part# 419341) A0001271	1	0
1		26 - 26 - GSA-3/8 QUIK SEAL - 3/8" (UL)	4	0
1		27 - 27 - QPSA-1/2 PULLEY SEAL - 1/2" Hood Seal (UL)	1	0
1		28 - 28 - S-DET DETECTOR - Series (Scissor Linkage) NEW#435547/435548 (UL DW417369/434480)	2	0
1		29 - 29 - ANS-360FL FUSIBLE LINK - 360deg F, R-102 and PIRANHA	2	0
1		34 - 34 - RPS-A REMOTE PULL STATION - Red composite (without wire rope) 434618	0	1
1		35 - 35 - PE-LT PULLEY ELBOW - Low Temp. Pulley Elbow, Set Screw Type	0	10
1		36 - 36 - PE-HT PULLEY ELBOW - High Temp Pulley Elbow, Compression Type	1	0
1		37 - 37 - SS-SLV STAINLESS STEEL SLEEVE PER FOOT	5	0
1		38 - 38 - ELB-90 3/8" CHROME PLATED ELBOW - 90 DEG	1	0
1		39 - 39 - ELB-45 3/8" CHROME PLATED ELBOW - 45 DEG	2	0

**Fire System Information - Job#2174581**

FIRE SYSTEM NO.	Tag	TYPE	SIZE	FLOW POINTS	INSTALLATION SYSTEM	LOCATION ON HOBD
1		Ansul R102	3.0	6	Wall Mount Left	N/A

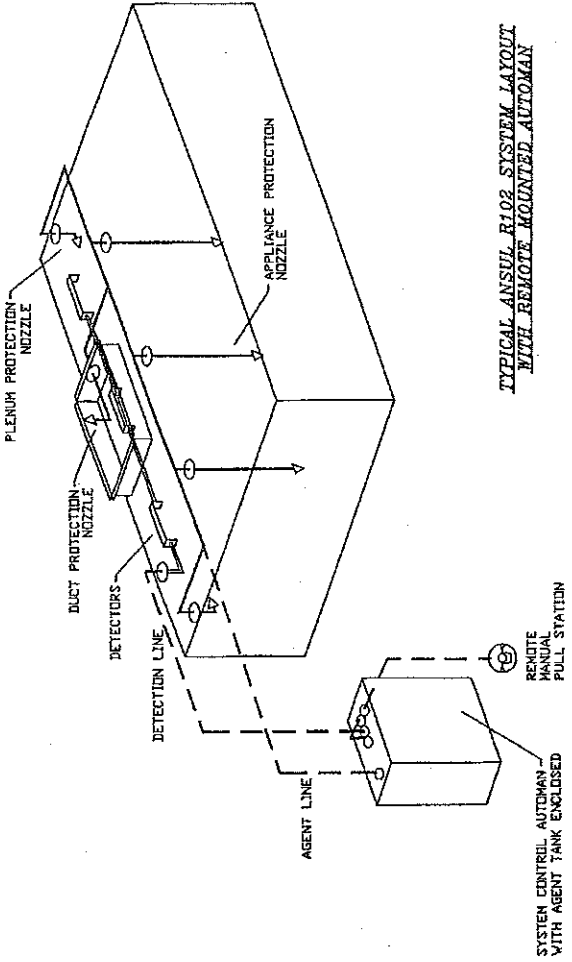
**Fire System Parts List Key**

FIRE SYSTEM NO.	Tag	KEY NUMBER - PART DESCRIPTION	QTY. BY FACTORY	QTY. BY DIST.
1	1	1 - 1 - AT - 3.0 TANK(H10) - 3.0 Gallon SS Tank (for use with Automan Release, Actuator, or SS Enclosure (UL/ULC))	0	1
1	1	2 - 2 - AP - AR AUTOMAN RELEASE - Ansul Automan Mechanical Release (UL)429859 Tank sold separately	0	1
1	1	5 - 5 - L10-30 AGENT - Ansulox Low PH Vet Chemical Agent, 3 Gallon (UL) 79372	0	1
1	1	7 - 7 - 101-20 CARTRIDGE - Carbon Dioxide 101-20, 3 Gallon Cartridge (R-102)	0	1
1	1	10 - 10 - TLINK LINK - Test Link (I test link)	0	1
1	1	11 - 11 - MICRO-SDA MICROSWITCH - Single Dual Electric Switch, One Standard Switch, One Alarm Duty Switch 437185	0	1
1	1	14 - 14 - 419336 NOZZLE - 1V Nozzle, Duct/Appliance (Replaces ANSUL Part# 419347, CAS Part# 419336) A0001266	1	0
1	1	16 - 16 - 419335 NOZZLE - 1N Nozzle, Plenum/Appliance (Replaces ANSUL Part# 419346, CAS Part# 419335) A0001265	1	0
1	1	22 - 22 - 419343 NOZZLE - 2120 Nozzle, Appliance (Replaces ANSUL Part# 419354, CAS Part# 419343) A0001273	1	0
1	1	24 - 24 - 419341 NOZZLE - 260 Nozzle, Appliance (Replaces ANSUL Part# 419352, CAS Part# 419341) A0001271	1	0
1	1	26 - 26 - OSA-3/8 OJIK SEAL - 3/8" (UL)	4	0
1	1	27 - 27 - OSA-1/2 PULLEY SEAL - 1/2" Hood Seal (UL)	1	0
1	1	28 - 28 - S-DET DETECTOR - Series (Solisor Linkage) NEM435547/435548 (UL)M417369/434480	2	0
1	1	29 - 29 - ANS-360FL FUSIBLE LINK - 360deg F, R-102 and PIRANHA	2	0
1	1	34 - 34 - RPS-A REMOTE PULL STATION - Red composite (without wire rope) 43461B	0	1
1	1	35 - 35 - PE-LT PULLEY ELBOW - Low Temp Pulley Elbow, Set Screw Type	0	10
1	1	36 - 36 - PE-HT PULLEY ELBOW - High Temp Pulley Elbow, Compression Type	1	0
1	1	37 - 37 - SS-SLV STAINLESS STEEL SLEEVE PER FOOT	5	0
1	1	38 - 38 - EL3-90 3/8" CHROME PLATED ELBOW - 90 DEG	1	0
1	1	39 - 39 - EL3-45 3/8" CHROME PLATED ELBOW - 45 DEG	2	0

JOB Seaside Rehab Center  
 LOCATION PORTLAND, ME, 04101  
 DATE 1/9/2015 JOB # 2174581  
 DRC # 3. DRAWN BY mitch.parr  
 REV. SCALE 3/8" = 1'-0"

**Thermotek**





TYPICAL ANSUL R102 SYSTEM LAYOUT WITH REMOTE MOUNTED AUTOMAN

- NOTES**
- FIELD PIPE DROPS AS SHOWN SLEEVING, ELBOVS, TEES, AND NOZZLES SUPPLIED BY CAS
  - RELOCATE NOZZLES IF FLOW PATTERN IS BLOCKED BY SHELVING, SALAMANDERS, ETC.
  - MAXIMUM 9 ELBOVS IN SUPPLY LINE.
  - MINIMUM 72 INCHES OF AGENT LINE FROM TANK TO FIRST NOZZLE.
  - IF APPLICABLE, PRE-PIPED CHARBROILER DROPS ARE SHIPPED LOOSE.
  - FACTORY PIPING EXTENDS A MAXIMUM OF 6' ABOVE THE TOP OF THE HOOD.
  - APPLIANCE DIMENSIONS LISTED REPRESENT THE COOKING SURFACE SIZE, NOT THE OVERALL APPLIANCE SIZE.
  - THIS FIRE SYSTEM COMPLIES WITH U.L. 300 REQUIREMENTS

**SPECIFICATIONS**

THE RESTAURANT FIRE SUPPRESSION SYSTEM SHALL BE THE PRE-ENGINEERED TYPE WITH A FIXED NOZZLE AGENT DISTRIBUTION NETWORK. IT SHALL BE LISTED WITH UNDERWRITERS LABORATORIES, INC. (UL)

THE SYSTEM SHALL BE CAPABLE OF AUTOMATIC DETECTION AND ACTIVATION WITH LOCAL OR REMOTE MANUAL ACTIVATION. ACCESSORIES SHALL BE AVAILABLE FOR MECHANICAL OR ELECTRICAL GAS LINE SHUT-OFF APPLICATIONS.

THE EXTINGUISHING AGENT SHALL BE A POTASSIUM CARBONATE, POTASSIUM ACETATE-BASED FORMULATION DESIGNED FOR FLAME KNOCKDOWN AND SECUREMENT OF GREASE-RELATED FIRES. IT SHALL BE AVAILABLE IN PLASTIC CONTAINERS WITH INSTRUCTIONS FOR LIQUID AGENT HANDLING AND USAGE.

THE REGULATED RELEASE MECHANISM SHALL BE COMPATIBLE WITH A FUSIBLE LINK DETECTION SYSTEM. THE FUSIBLE LINK SHALL BE SELECTED AND INSTALLED ACCORDING TO THE OPERATING TEMPERATURE IN THE VENTILATING SYSTEM. THE FUSIBLE LINK SHALL BE SUPPORTED BY A DETECTOR BRACKET/ LINKAGE ASSEMBLY.

Job # 2174581  
 Drawn By: Seaside Rehab Center  
 System Size: ANSUL-30 Total FP required: 6  
 Hood # 1 4' 0.00" Long x 36" Wide x 24" High  
 Riser # 1 Size: 1/2" x 9"

**LEGEND -- WALL MOUNTED ANSUL SYSTEM**

- 1A 1.5 GALLON TANK
- 1B 3.0 GALLON TANK
- 2 AUTOMAN RELEASE
- 3A 3 GALLON TANK ENCLOSURE
- 3B 6 GALLON TANK ENCLOSURE
- 4 REGULATED ACTUATOR
- 5 ANSULEX LIQUID AGENT (3 GAL.)
- 6 ANSULEX LIQUID AGENT (1.5 GAL.)
- 7 CARTRIDGE (101-20)
- 8 CARTRIDGE (101-10)
- 9 CARTRIDGE (101-30)
- 9A CARTRIDGE (LT-A-101-30)
- 9B DOUBLE TANK CARTRIDGE
- 10 TEST LINK
- 11 DOUBLE MICROSWITCH
- 2V DUCT NOZZLE (419337)
- 1W NOZZLE ASSEMBLY (419336)
- 1X NOZZLE ASSEMBLY (419333)
- 1Y NOZZLE ASSEMBLY (419335)
- 1Z NOZZLE ASSEMBLY (419334)
- 1/2N NOZZLE ASSEMBLY (419338)
- 3N NOZZLE ASSEMBLY (419339)
- 245 NOZZLE ASSEMBLY (419340)
- 230 NOZZLE ASSEMBLY (419339)
- 2120 NOZZLE ASSEMBLY (419343)
- 290 NOZZLE ASSEMBLY (419342)
- 260 NOZZLE ASSEMBLY (419341)
- 28 DETECTOR BRACKET
- 29 LOW TEMP FUSIBLE LINK
- 30 HIGH TEMP FUSIBLE LINK
- MGV MECHANICAL GAS VALVE
- EEV ELECTRICAL GAS VALVE
- 34 REMOTE MANUAL PULL STATION
- S SWIVEL ADAPTOR

JOB Seaside Rehab Center	
LOCATION PORTLAND, ME, 04101	
DATE 1/9/2015	JOB # 2174581
DWG # 5	DRAWN BY mitch@porc
REV.	

**Thermotek**

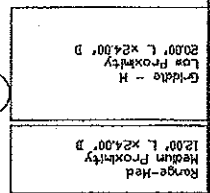
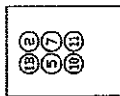
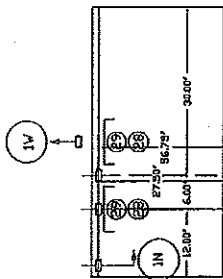
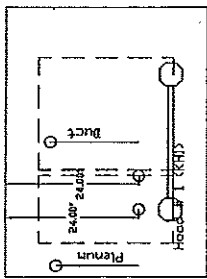


SCALE 3/8" = 1'-0"

**NOTES**

- FIELD PIPE DROPS AS SHOWN
- SLEEVING, ELBOWS, TEES, AND NOZZLES SUPPLIED BY GAS
- RELOCATE NOZZLES IF FLOW PATTERN IS BLOCKED BY SHELVING, SALVANDERS, ETC.
- MAXIMUM 9' ELBOWS IN SUPPLY LINE.
- MINIMUM 72 INCHES OF AGENT LINE FROM TANK TO FIRST NOZZLE.
- IF APPLICABLE, PRE-PIPED CHARBROILER DROPS ARE SHIPPED LOOSE.
- FACTORY PIPING EXTENDS A MAXIMUM OF 6' ABOVE THE TOP OF THE HOOD.
- APPLIANCE DIMENSIONS LISTED REPRESENT THE COOKING SURFACE SIZE, NOT THE OVERALL APPLIANCE SIZE.
- THIS FIRE SYSTEM COMPLIES WITH UL 300 REQUIREMENTS

Job # 2174581  
 Job Name: Seaside Rehab Center  
 Drawn By:  
 System Size: ANSUL-30 Total FP required: 6  
 Hood # 1, 4', 0.00' Long, x 36" Wide x 24" High  
 Riser # 1 Size: 10" x 8"



JOB Seaside Rehab Center	
LOCATION PORTLAND, ME. 04101	
DATE 1/9/2015	JOB # 2174581
DWG # 4	DRAWN BY mlch,parc
REV.	SCALE 3/8" = 1'-0"

**Thermotek**

