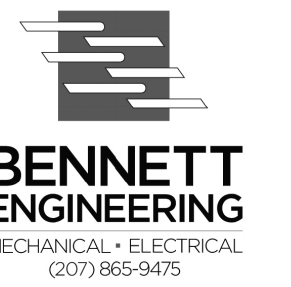


GENERAL NOTES:

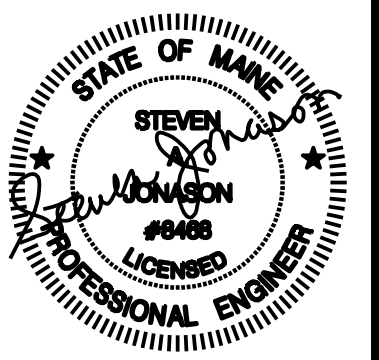
REVISIONS:



5 FUNDY ROAD Phone: 207-781-3344
 FALMOUTH, ME 04105 Fax: 207-699-5564
 Online @ foresidearchitects.com

Project Status:
 Permit and Bid Set

Project Number:
 SRH0314



Seaside Rehabilitation
 and Healthcare Center
 Lobby / Rehab Renovation
 850 Baxter Boulevard
 Portland, Maine

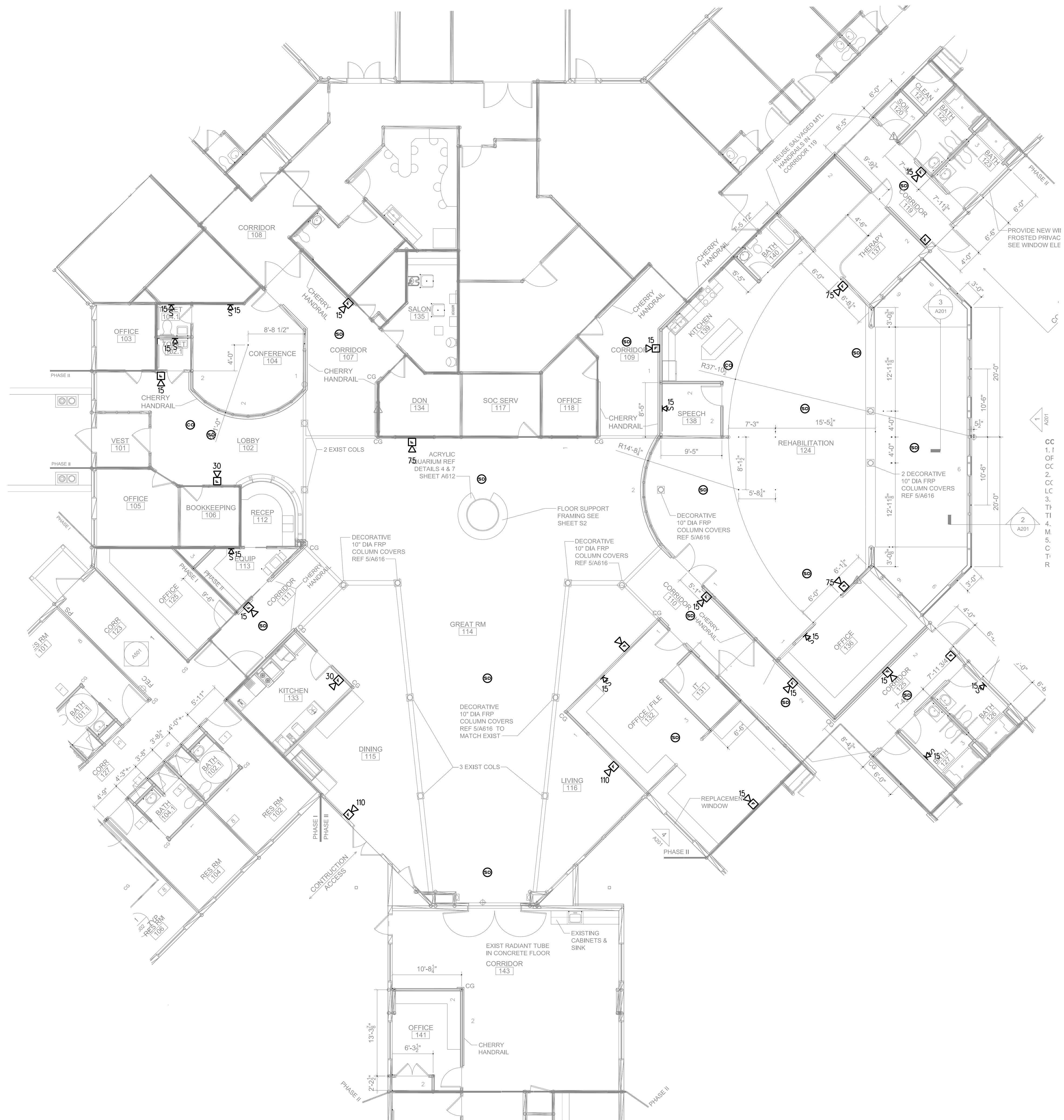
Drawing Name:
 LOBBY FIRE ALARM PLAN

Scale:
 1/8"=1'-0" OR
 AS NOTED

Date:
 02/18/2015

SHEET:

FA-1.1



SYMBOL LEGEND

- FIRE ALARM CONTROL PANEL
- FIRE ALARM ANNUNCIATOR PANEL
- FIRE ALARM AUDIO/VISUAL MOUNT 6'-8" AFF, NUMBER DENOTES CANDELA RATING, "MH" DENOTES MINHORN, "CL" DENOTES CEILING MOUNTED, NO DESIGNATION EQUALS 15cd
- FIRE ALARM PULL STATION, MOUNT 48" AFF
- FIRE ALARM VISUAL STROBE ONLY, FLUSH MOUNT 6'-8" AFF, NUMBER DENOTES CANDELA RATINGS, "CL" DENOTES CEILING MOUNTED
- SYSTEM CONNECTED SMOKE / CARBON MONOXIDE DETECTOR, PHOTOELECTRIC TYPE
- SYSTEM CONNECTED FIXED TEMPERATURE HEAT DETECTOR
- SMOKE DETECTOR, PHOTOELECTRIC TYPE, SYSTEM CONNECTED.
- SMOKE DETECTOR, PHOTOELECTRIC TYPE, SYSTEM CONNECTED. "ER" DENOTES ELEV RECALL
- SYSTEM CONNECTED SMOKE DETECTOR, PHOTOELECTRIC TYPE, WITH SOUNDER BASE
- CARBON MONOXIDE DETECTOR
- DUCT SMOKE DETECTOR & TEST STATION