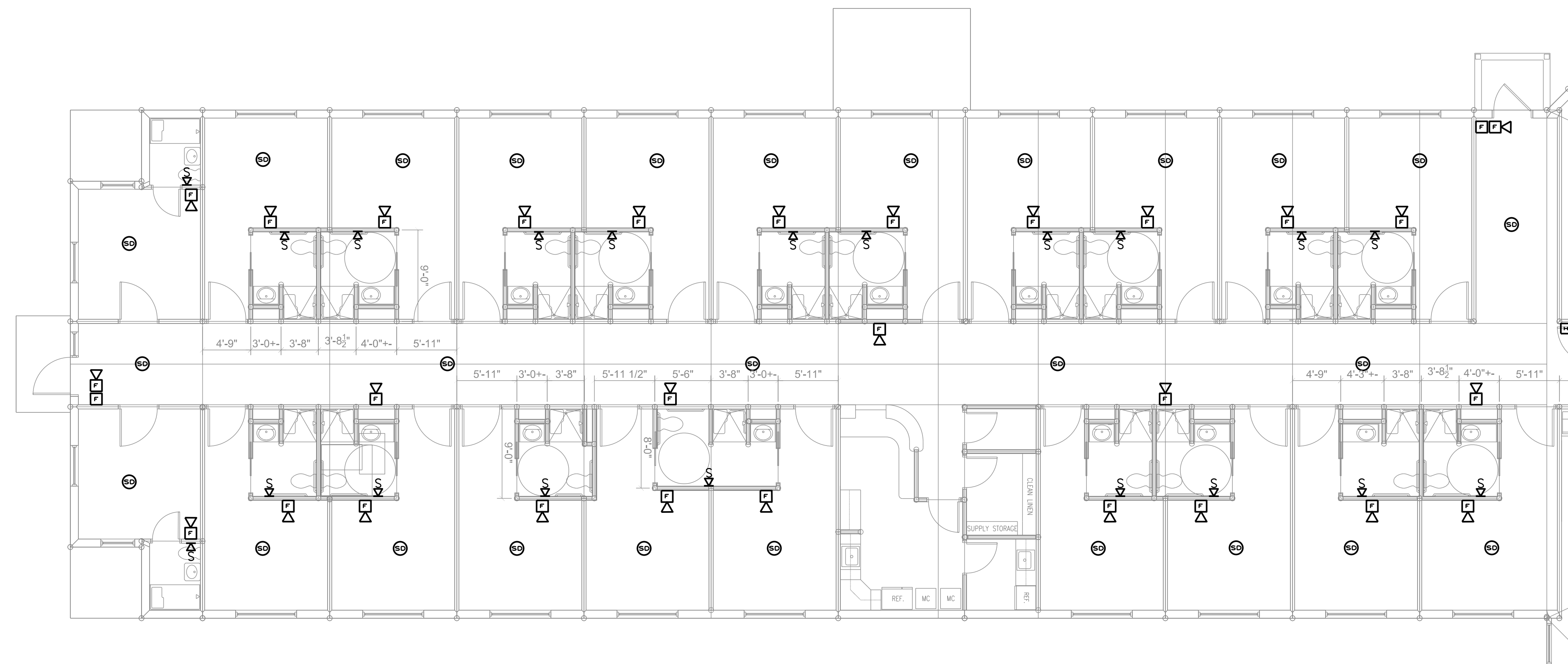


FIRE ALARM DEVICE LEGEND:

- FIRE ALARM CONTROL PANEL
- FIRE ALARM ANNUNCIATOR PANEL
- FIRE ALARM AUDIO/VISUAL, MOUNT 6'-8" AFF, NUMBER DENOTES CANDELA RATING. "MH" DENOTES MINIHORN, "CL" DENOTES CEILING MOUNTED. NO DESIGNATION EQUALS 15cd
- FIRE ALARM PULL STATION, MOUNT 48" AFF
- FIRE ALARM VISUAL, STROBE ONLY FLUSH MOUNT 6'-8" AFF, NUMBER DENOTES CANDELA RATINGS. "CL" DENOTES CEILING MOUNTED
- SYSTEM CONNECTED SMOKE / CARBON MONOXIDE DETECTOR, PHOTOELECTRIC TYPE
- SYSTEM CONNECTED FIXED TEMPERATURE HEAT DETECTOR
- SMOKE DETECTOR, PHOTOELECTRIC TYPE, SYSTEM CONNECTED.
- SMOKE DETECTOR, PHOTOELECTRIC TYPE, SYSTEM CONNECTED. "ER" DENOTES ELEV RECALL
- SYSTEM CONNECTED SMOKE DETECTOR, PHOTOELECTRIC TYPE, WITH SOUNDER BASE
- CARBON MONOXIDE DETECTOR
- DUCT SMOKE DETECTOR & TEST STATION
- FIRE/SMOKE DAMPER, SUPPLIED AND INSTALLED BY MECHANICAL CONTRACTOR. ELECTRICAL CONTRACTOR TO PROVIDE ALL WIRING CONNECTIONS AND FIRE ALARM DUCT SMOKE DETECTORS, ADDRESSABLE MODULES AND PROGRAMMING.
- SPRINKLER SYSTEM FLOW SWITCH } SUPPLIED BY SPRINKLER CONTRACTOR
- SPRINKLER SYSTEM TAMPER SWITCH } WIRED BY E.C. VERIFY LOCATIONS WITH SPRINKLER CONTRACTOR.
- MAGNETIC DOOR HOLD
- NURSE CALL BASE STATION
- NURSE CALL PULL STATION
- NURSE CALL ANNUNCIATOR LIGHT
- WP DENOTES WEATHERPROOF CONSTRUCTION
- RP DENOTES EXISTING ELECTRICAL EQUIPMENT TO BE REPLACED
- RM DENOTES EXISTING ELECTRICAL EQUIPMENT TO REMAIN
- RL DENOTES EXISTING ELECTRICAL EQUIPMENT TO BE RELOCATED
- RV DENOTES EXISTING ELECTRICAL EQUIPMENT TO BE REMOVED



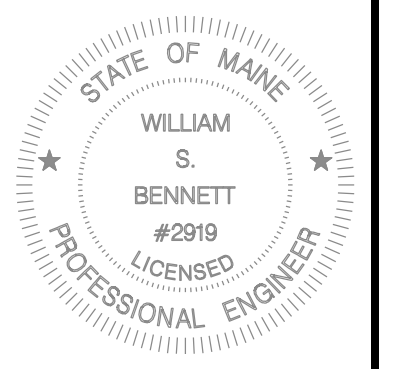
REVISIONS:



5 FUNDY ROAD Phone: 207-781-3344
 FALMOUTH, ME 04105 Fax: 207-699-5564
 Online @ foresidearchitects.com

Project Status:
 PERMIT &
 BID SET

Project Number:



Seaside Rehabilitation
 and Healthcare Center
 850 Baxter Boulevard
 Portland, Maine

Drawing Name:
 WING I LIFE/SAFETY PLAN

Scale:
 1/8" = 1'-0"

Date:
 05/01/14

SHEET:

LS101