

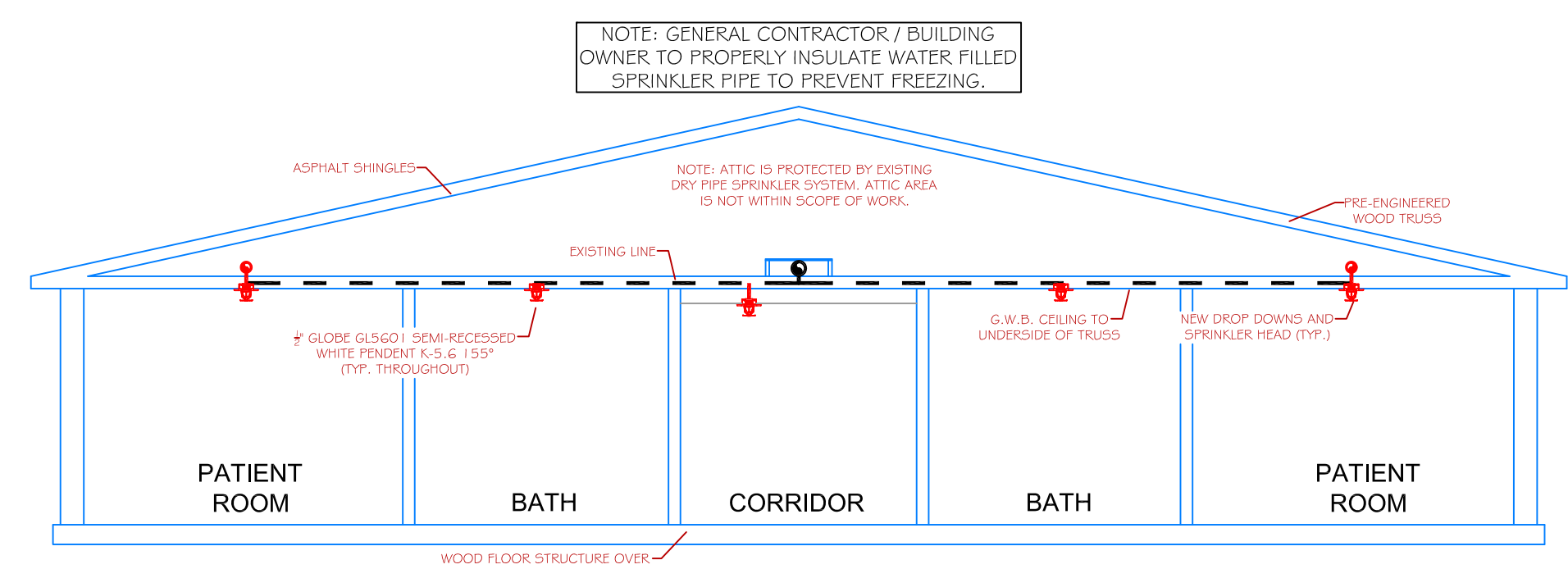
**PROJECT SITE** **SITE PLAN**  
SCALE: N.T.S.

**PROJECT DESCRIPTION**

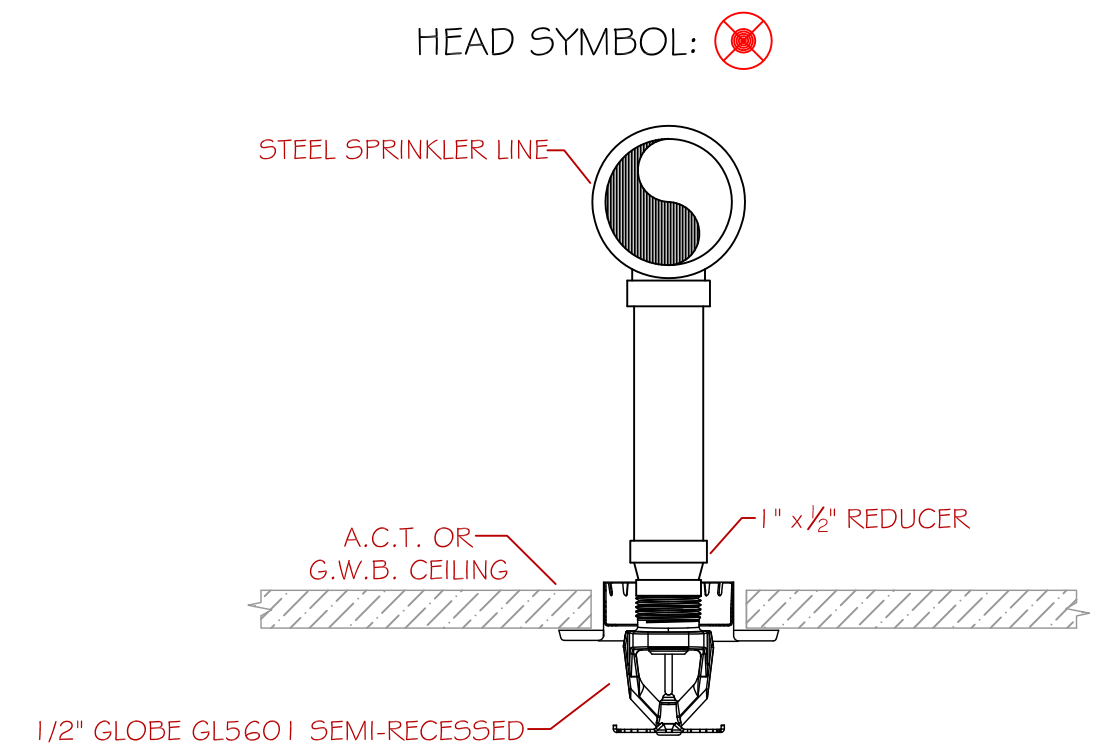
**BUILDING CONST:** THE BUILDING IS OF EXISTING TYPE V COMBUSTIBLE CONSTRUCTION. ALL INTERIOR WALLS AND CEILINGS AS INDICATED ARE FINISHED WITH G.W.B. THE ROOF STRUCTURE CONTAINS PRE-ENGINEERED WOOD TRUSSES WITH ASPHALT SHINGLES. THE PROJECT SCOPE INVOLVES REMOVING THE EXISTING REHABILITATION ROOMS AND INSTALLING NEW ROOMS IN AN UPDATED FLOOR PLAN.

**BUILDING OCCUP:** THE BUILDING IS DESIGNED AS A MEDICAL / REHABILITATION FACILITY WITH SEVERAL PATIENT ROOMS.

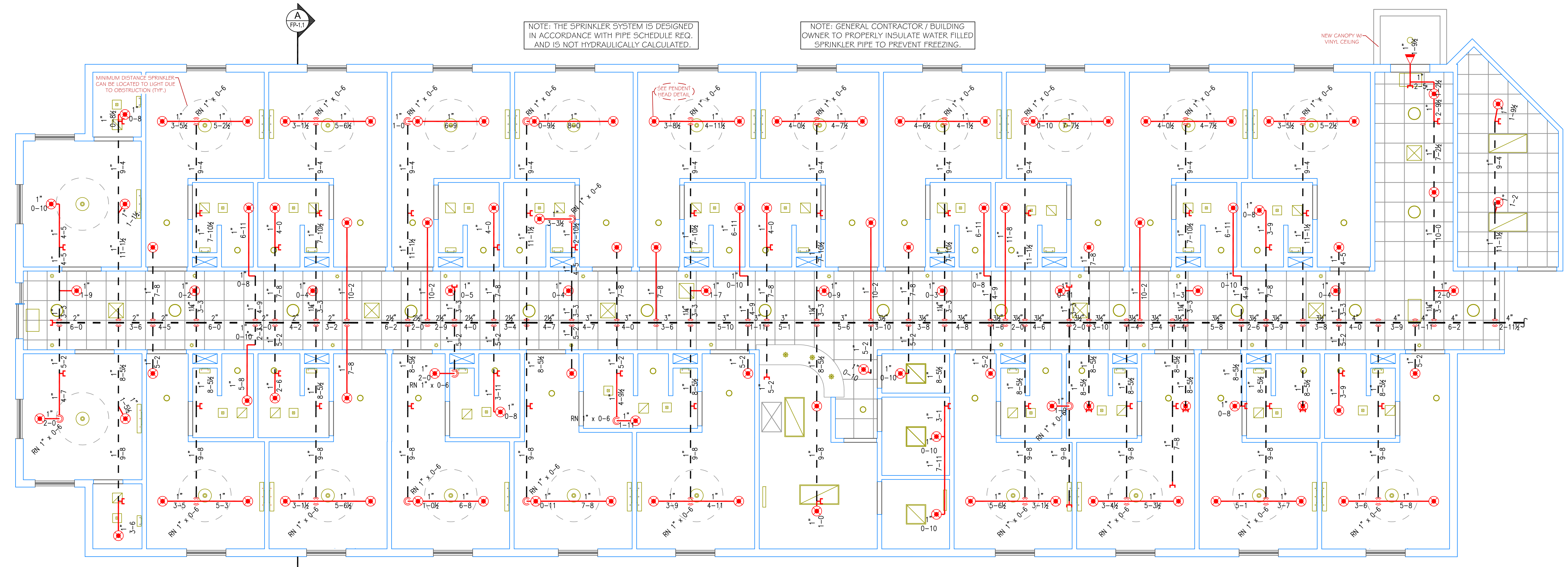
**SPRINKLER DESIGN:** THE BUILDING WING BEING RENOVATED HAS BEEN DESIGNED USING A LIGHT HAZARD CLASSIFICATION THROUGHOUT. THE EXISTING SPRINKLER SYSTEM HAS BEEN DESIGNED PER THE PIPE SCHEDULE METHOD AND IS THEREFORE NOT HYDRAULICALLY CALCULATED. THE SPRINKLER SYSTEM HAS BEEN DESIGNED TO MEET ALL APPLICABLE CODES / STANDARDS OF A 2010 EDITION NFPA 13 AUTOMATIC SPRINKLER SYSTEM.




**SECTION DETAIL "A"**  
SCALE: N.T.S.




**PENDENT HEAD DETAIL**  
SCALE: N.T.S.



**WING ONE FLOOR PLAN**  
SCALE: 3/16" = 1'-0"  
PROTECTED AREA: 7,180 SQ. FT.

GLOBE\*  
MODEL GL5601  
  
103/155"  
K=5.6  
1/2" SEMI RECESSED WHITE  
PENDENT  
(196 SQ. FT. SPACING - LIGHT)

GLOBE\*  
MODEL GL5641  
  
1 / 155"  
K=5.6  
1" DRY BARREL FLUSH MOUNT  
WHITE HORIZONTAL SIDEWALL  
(196 SQ. FT. SPACING - LIGHT)

\* OR APPROVED EQUAL  
TOTAL HEADS ON SHEET: 104  
SCALE: 3/16"=1'-0"

DATE: MAY 8, 2014  
DRAWN BY: JEREMY A. FOSS  
MAINE RMS #808  
NICET LEVEL III CERT. #126801  
CHECKED BY: E. POULIN (RMS# 515)  
NICET LEVEL IV CERT. # 108534

LOCATION:  
**850 BAXTER BOULEVARD**  
**PORTLAND, ME**

DRAWING TITLE:  
**SEASIDE REHAB. AND HEALTHCARE WING ONE RENO.**  
FIRE PROTECTION PLAN (NFPA 13 2010 ed.)

DRAWING NO.:  
**FP-1.1**

THIS DRAWING HAS BEEN REVIEWED FOR GENERAL COMPLIANCE WITH THE 2010 ed. OF NFPA 13 - STANDARD FOR AUTOMATIC SPRINKLER SYSTEMS. ANY DEVIATIONS FROM THIS DOCUMENT SHALL BE MADE UNDER THE SUPERVISION OF A CERTIFIED DESIGN PROFESSIONAL.  
REVIEW COMPLETED BY:  
JEREMY A. FOSS  
MAINE RMS #808  
NICET LEVEL III  
CERTIFICATION #126801  
SIGNED: 