

GENERAL NOTES:

REVISIONS:



FORESIDE ARCHITECTS LLC
 5 FUNDY ROAD
 FALMOUTH, ME 04105
 Online @ foresidearchitects.com
 Phone: 207-781-3344
 Fax: 207-699-5564

Project Status:
 SPEC REVIEW SET
 Project Number:
 SRH0314

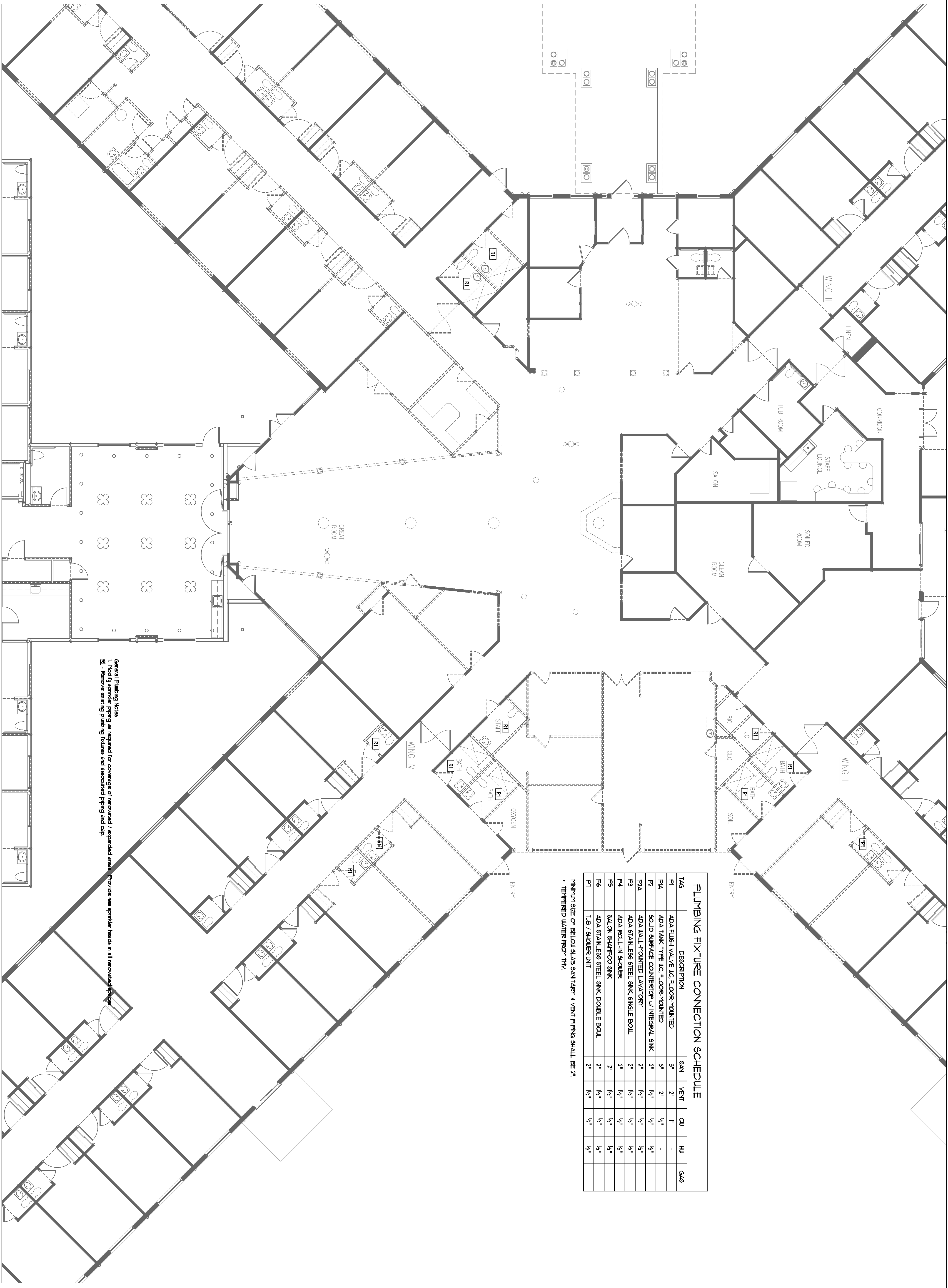
Seaside Rehabilitation
 and Healthcare Center
 Lobby / Rehab Renovation
 850 Baxter Boulevard
 Portland, Maine

Drawing Name:
 Plumbing Demolition Plan

Scale:
 1/8" = 1'-0"

Date:
 07/18/14

SHEET:
P1.2



PLUMBING FIXTURE CONNECTION SCHEDULE

TAG	DESCRIPTION	GAN	VENT	CU	HU	GAS
P1	ADA FLUSH VALVE IJC FLOOR-MOUNTED	3"	2"	1"	-	-
P1A	ADA TANK-TYPE IJC FLOOR-MOUNTED	3"	2"	1/2"	-	-
P2	SOLID SURFACE COUNTERTOP w/ INTEGRAL SINK	2"	1/2"	1/2"	1/2"	1/2"
P2A	ADA WALL-MOUNTED LAVATORY	2"	1/2"	1/2"	1/2"	1/2"
P3	ADA STAINLESS STEEL SINK SINGLE BOWL	2"	1/2"	1/2"	1/2"	1/2"
P4	ADA ROLL-IN SHOWER	2"	1/2"	1/2"	1/2"	1/2"
P5	SALON SHAMPOO SINK	2"	1/2"	1/2"	1/2"	1/2"
P6	ADA STAINLESS STEEL SINK DOUBLE BOWL	2"	1/2"	1/2"	1/2"	1/2"
P7	TUB / SHOWER UNIT	2"	1/2"	1/2"	1/2"	1/2"

* MINIMUM SIZE OF BELOW SLAB SANITARY & VENT PIPING SHALL BE 2".
 * TEMPERED WATER FROM TMV.

General Plumbing Notes
 Existing floor plan piping to be removed / suspended areas. Provide new sanitary heads in all renovated spaces.
 RI - Remove existing plumbing fixtures and associated piping and caps.

1 FIRST FLOOR PLAN
 SCALE: 1/8" = 1'-0"