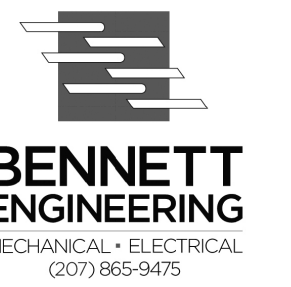


GENERAL NOTES:

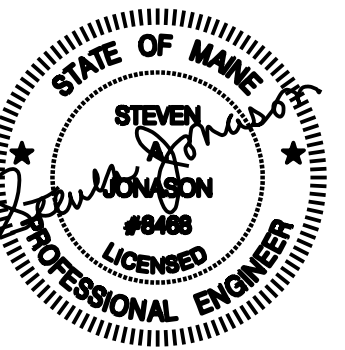
REVISIONS:



5 FUNDY ROAD Phone: 207-781-3344  
 FALMOUTH, ME 04105 Fax: 207-699-5564  
 Online @ foresidearchitects.com

Project Status:  
 Permit and Bid Set

Project Number:  
 SRH0314



Seaside Rehabilitation  
 and Healthcare Center  
 Lobby / Rehab Renovation  
 850 Baxter Boulevard  
 Portland, Maine

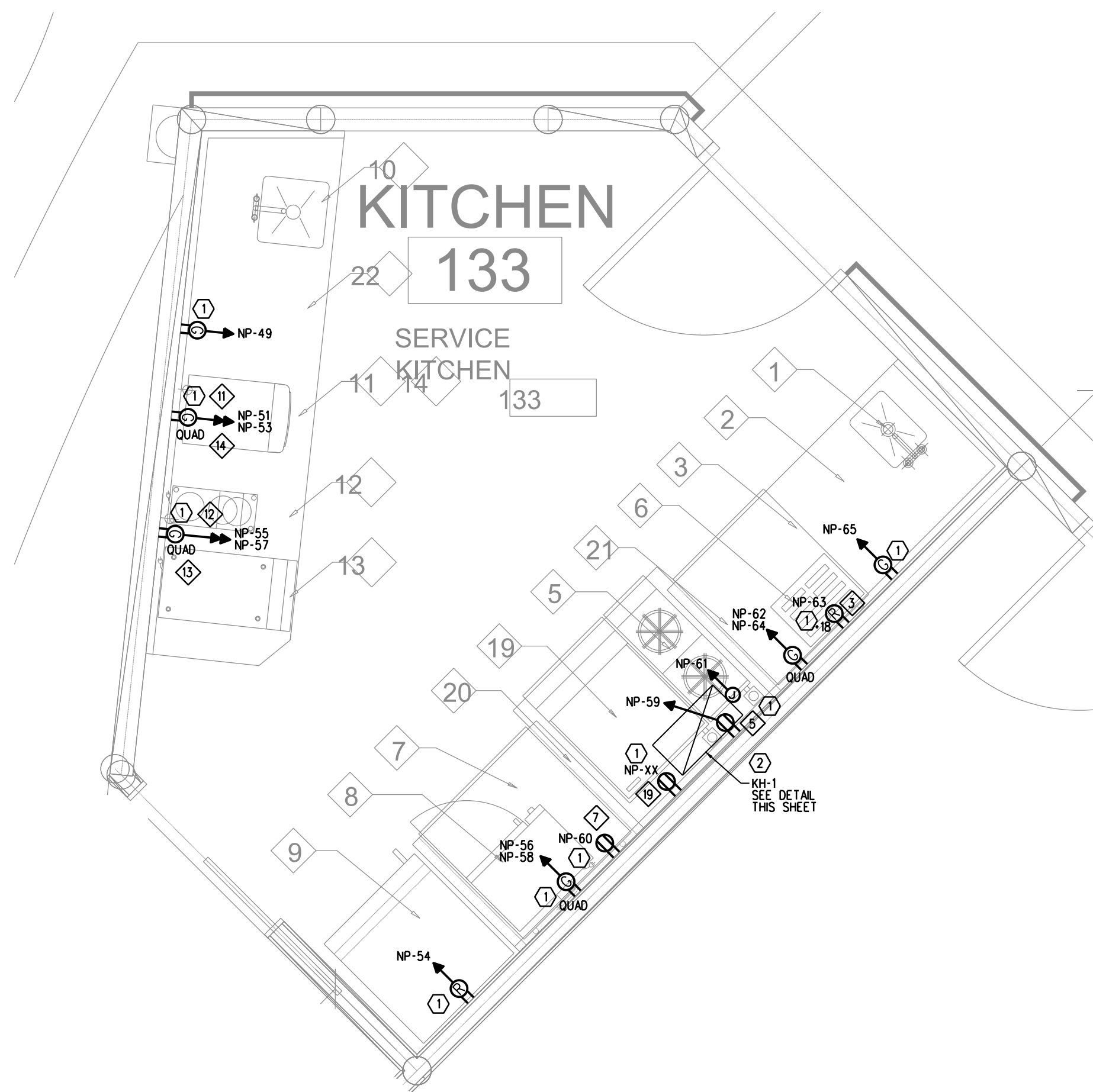
Drawing Name:  
 PARTIAL PLANS

Scale:  
 1/8"=1'-0" OR  
 AS NOTED

Date:  
 07/18/14

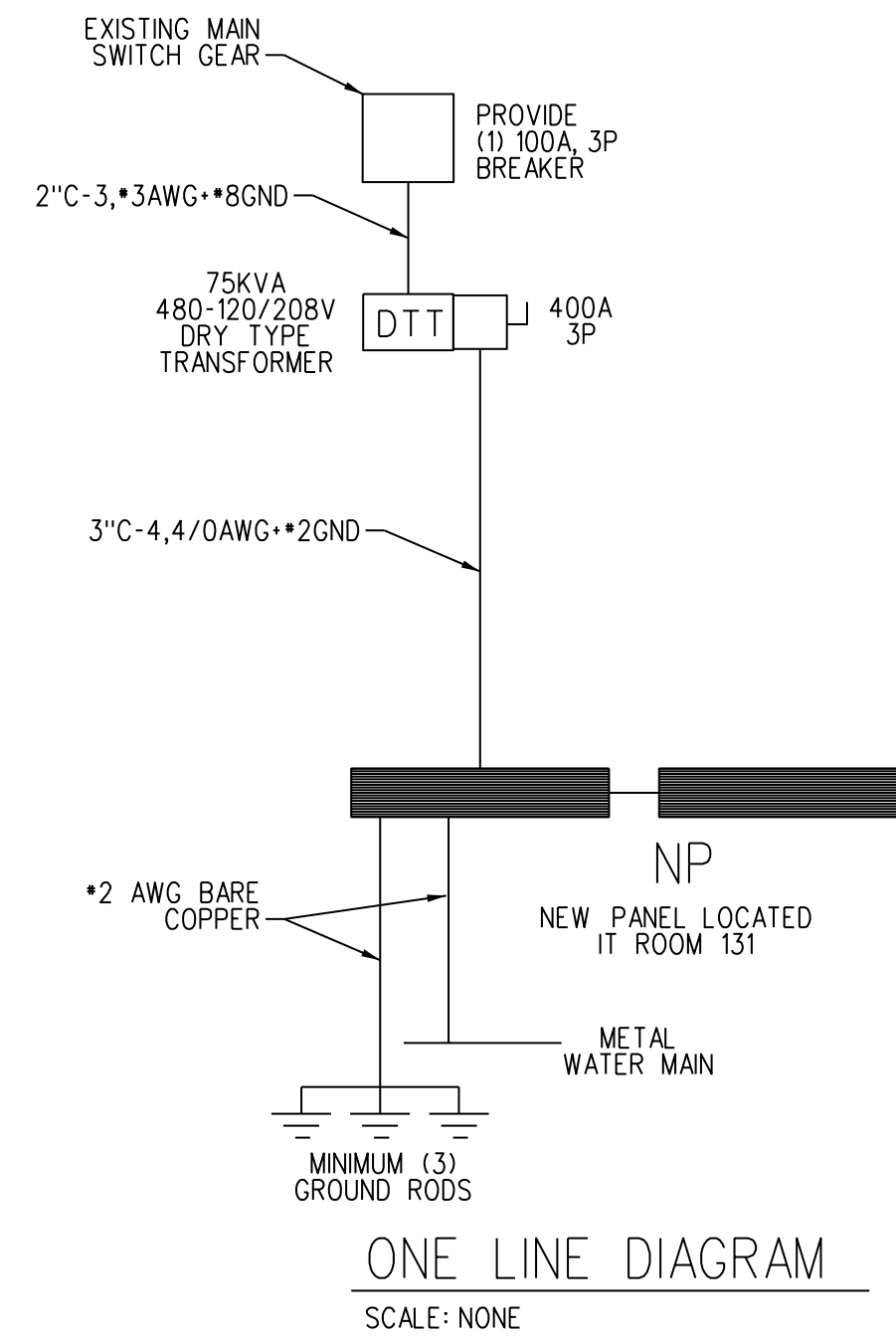
SHEET:

E-3.4

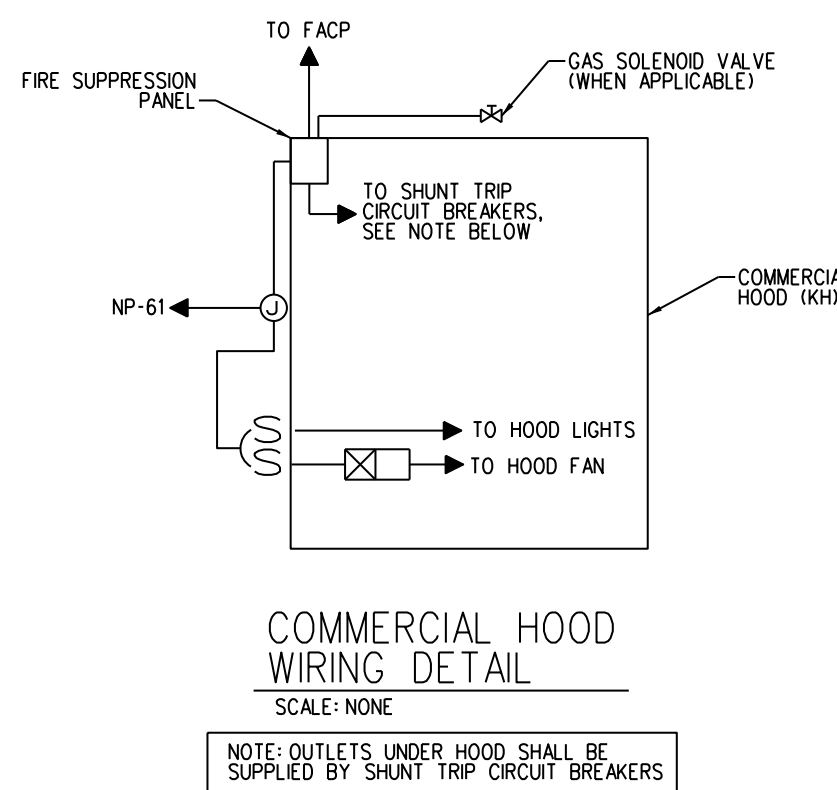


SERVICE KITCHEN PARTIAL PLAN  
 SCALE: 1/2"=1'-0"

ITEM	EQUIPMENT DESCRIPTION	REMARKS
1	HAND SINK 6" SINK DEPTH	10" WIDE X 14" DEEP ST ST SINK & FAUCET INTEGRAL TO ST COUNTER. PIPING CONNECTIONS BY PLUMBER.
2	STAINLESS STEEL COUNTERTOP (CONT.)	CUSTOM 69" WIDE, 32" DEEP AND 38" HIGH CONFIRM DIMENSIONS AND SHOP FABRICATE
3	UNDER COUNTER REFRIGERATOR	DELFIELD # UC4427N
4	EXHAUST HOOD W/ INTEGRAL FIRE SUPP.	DENLAR #1030-FE-NSF
5	COUNTERTOP HOT PLATE	GARLAND GTOG12-2
6	TOASTER	HATCO #TPT-208
7	UNDER COUNTER FREEZER	DELFIELD # UC4532N
8	MICROWAVE UNIT	SHARP #R-21LCF
9	GLASS FRONT REFRIGERATOR / COOLER	TRUE MANUFACTURING #TS-23G
10	WASH SINK 8" SINK DEPTH	14" WIDE X 14" DEEP ST ST SINK & FAUCET INTEGRAL TO ST COUNTER. PIPING CONNECTIONS BY PLUMBER.
11	ICE MAKER	FOLLETT CORPORATION # 7FS100A1WVNFST00
12	COFFEE BREWER	(TO BE PROVIDED BY BEVERAGE VENDOR) PROVIDE WATER & POWER SUPPLY
13	JUICE DISPENSER	(TO BE PROVIDED BY BEVERAGE VENDOR) PROVIDE WATER & POWER SUPPLY
14	WATER TREATMENT SYSTEM	TERRY SMK1 (CONNECT TO ICE DISPENSER)
15	SELF SERVE CASE, REFRIG. DROP-IN	STRUCTURAL CONCEPTS # DO4816R W/ N.CURTAIN
16	SIDE BY SIDE REFRIGERATOR	GE PROFILE # PZS25KSESS
17	ELECTRIC RANGE	GENERAL ELECTRIC JB450RF SS
18	DISHWASHER	GENERAL ELECTRIC GDT580 SSFSS
19	COUNTERTOP GRIDDLE	GARLAND GTGG24-GT24M
20	STAINLESS STEEL EQUIP STAND	CUSTOM 43" WIDE, 37" DEEP AND 24" HIGH CONFIRM DIMENSIONS AND SHOP FABRICATE
21	STAINLESS STEEL COUNTERTOP (CONT.)	CUSTOM 114" WIDE, 32" DEEP AND 38" HIGH CONFIRM DIMENSIONS AND SHOP FABRICATE
22	STAINLESS STEEL COUNTERTOP (CONT.)	CUSTOM 37" WIDE, 32" DEEP AND 38" HIGH CONFIRM DIMENSIONS AND SHOP FABRICATE



ONE LINE DIAGRAM  
 SCALE: NONE



COMMERCIAL HOOD WIRING DETAIL  
 SCALE: NONE  
 NOTE: OUTLETS UNDER HOOD SHALL BE SUPPLIED BY SHUNT TRIP CIRCUIT BREAKERS