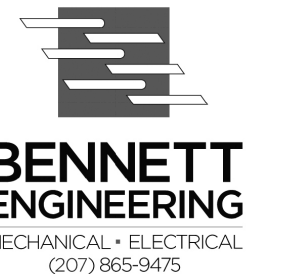


GENERAL NOTES:

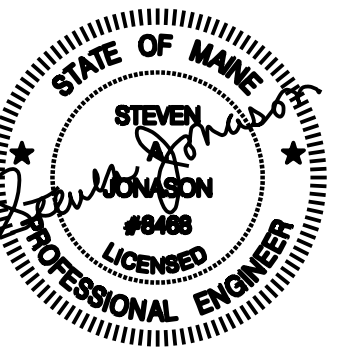
REVISIONS:



5 FUNDY ROAD Phone: 207-781-3344
 FALMOUTH, ME 04105 Fax: 207-699-5564
 Online @ foresidearchitects.com

Project Status:
 Permit and Bid Set

Project Number:
 SRH0314



Seaside Rehabilitation
 and Healthcare Center
 Lobby / Rehab Renovation
 850 Baxter Boulevard
 Portland, Maine

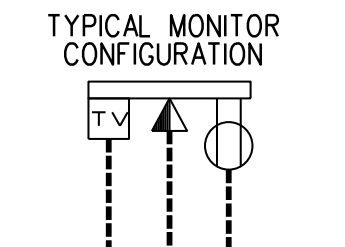
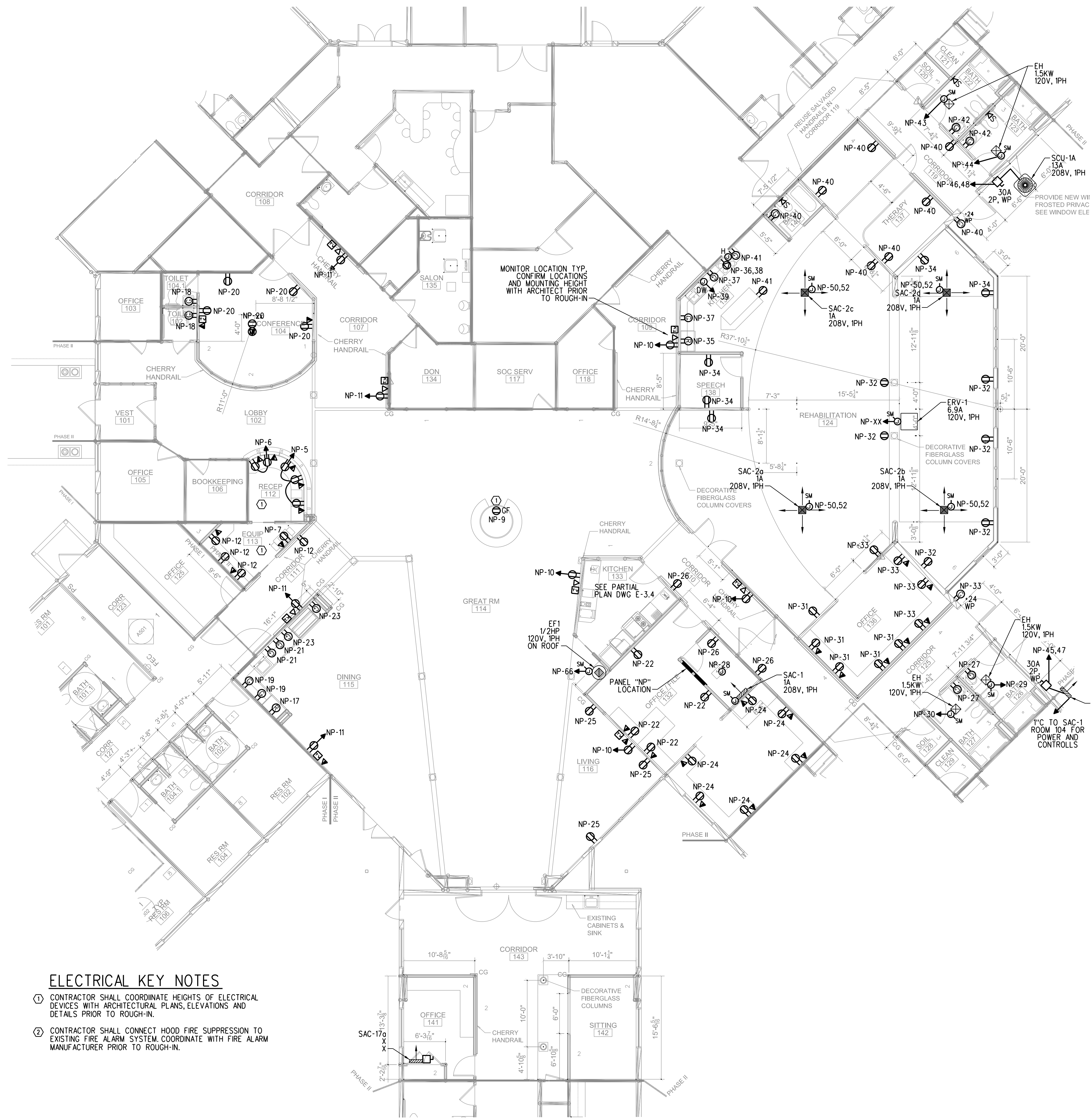
Drawing Name:
 LOBBY POWER PLAN

Scale:
 1/8"=1'-0" OR
 AS NOTED

Date:
 07/18/14

SHEET:

E-3.3



CONTRACTOR SHALL RUN
 ALL CONDUITS/WIRING TO
 DATA CLOSET IN EXISTING
 CONFERENCE ROOM
MONITOR DETAIL
 SCALE: NONE

SYMBOL LEGEND

- POWER PANEL, 120/208V, 3PHS, 4WIRE
- ⊕ DUPLEX RECEPTACLE - 20A, 125V SPEC. GRADE GROUNDING TYPE, TAMPER PROOF AND MATCHING PLATE. MOUNT 18" AFF UNLESS NOTED OTHERWISE.
- ⊕ QUAD RECEPTACLE - 20A, 125V SPEC. GRADE GROUNDING TYPE, TAMPER PROOF AND MATCHING PLATE. MOUNT 18" AFF UNLESS NOTED OTHERWISE.
- ⊕ DUPLEX RECEPTACLE - 20A, 125V SPEC. GRADE GROUNDING TYPE, TAMPER PROOF AND MATCHING PLATE. MOUNT 18" AFF - BOTTOM RECEPTACLE SWITCHED.
- ⊕ DEDICATED REFRIGERATOR DUPLEX RECEPTACLE - 20A, 125V SPEC. GRADE GROUNDING TYPE, TAMPER PROOF AND MATCHING PLATE. MOUNT RECEPTACLE AT 48" AFF.
- ⊕ GROUND FAULT DUPLEX RECEPTACLE - 20A, 125V - TAMPER PROOF WITH MATCHING PLATE FURNISHED W/ OUTLET. FLUSH MOUNTED 44" AFF UNLESS NOTED OTHERWISE. "DW" DENOTES DISHWASHER, MOUNT 18" AFF.
- ⊕ FLUSH FLOOR MOUNTED DUPLEX RECEPTACLE - 15A, 125V SPEC. GRADE GROUNDING TYPE
- ⊕ FLUSH CEILING MOUNTED DUPLEX RECEPTACLE - 15A, 125V SPEC. GRADE GROUNDING TYPE
- ⊕ RANGE OUTLET 50 AMP, 250 VOLT, GROUNDING TYPE FLUSH MOUNTED 18" AFF
- ⊕ DRYER OUTLET 30 AMP, 250 VOLT, GROUNDING TYPE FLUSH MOUNTED 18" AFF
- ⊕ TV OUTLET LOCATION - CABLE AND JACKS BY E.C.
- RACEWAY & WIRING OR MC CABLE RUN CONCEALED IN WALLS/CEILINGS.
- RACEWAY & WIRING RUN EXPOSED
- RACEWAY & WIRING RUN CONCEALED UNDER FLOOR OR BURIED 30" BELOW FINISH GRADE
- HOME RUN TO PANEL - ARROWS INDICATE QUANTITY OF CIRCUITS - NUMERALS DENOTE CIRCUIT NUMBERS
- ⊕ LIGHTING FIXTURES - CAPITAL LETTERS DENOTE TYPE AS PER LIGHTING FIXTURE SCHEDULE. LOWER CASE LETTERS INDICATE SWITCH CONTROL. DIAGONAL LINE INDICATES NIGHT LIGHT - UNSWITCHED
- S SINGLE POLE SWITCH, 120 VOLT, 20 AMP, SPEC. GRADE, GROUNDING TYPE, MOUNT 48" AFF. 3-3-WAY, 4-4-WAY, P-PILOT, LOWER CASE LETTER INDICATES FIXTURE OR CONTROLLED LOAD.
- D SINGLE POLE DIMMER SWITCH, 120 VOLT, 20 AMP, SPEC. GRADE, GROUNDING TYPE, MOUNT 48" AFF. 3-3-WAY, 4-4-WAY, P-PILOT, LOWER CASE LETTER INDICATES FIXTURE OR CONTROLLED LOAD.
- ⊕ TELEPHONE/DATA DUAL JACK LOCATION MOUNT 18" AFF - TWO CAT 5E CABLES BACK TO TBB.
- ⊕ FLUSH FLOOR MOUNTED TELEPHONE/DATA DUAL JACK TWO CAT 5E CABLES BACK TO TBB.
- ⊕ TELEPHONE JACK LOCATION MOUNT 18" AFF - ONE CAT 5E CABLE BACK TO TBB.
- ⊕ DATA JACK, RUN TWO CAT 5E CABLES BACK TO TBB.
- WP - DENOTES WEATHERPROOF CONSTRUCTION
- RP - DENOTES EXISTING ELECTRICAL EQUIPMENT TO BE REPLACED
- RM - DENOTES EXISTING ELECTRICAL EQUIPMENT TO REMAIN
- RL - DENOTES EXISTING ELECTRICAL EQUIPMENT TO BE RELOCATED
- RV - DENOTES EXISTING ELECTRICAL EQUIPMENT TO BE REMOVED
- FWU - DENOTES FURNISHED WITH UNIT

ELECTRICAL KEY NOTES

- ① CONTRACTOR SHALL COORDINATE HEIGHTS OF ELECTRICAL DEVICES WITH ARCHITECTURAL PLANS, ELEVATIONS AND DETAILS PRIOR TO ROUGH-IN.
- ② CONTRACTOR SHALL CONNECT HOOD FIRE SUPPRESSION TO EXISTING FIRE ALARM SYSTEM COORDINATE WITH FIRE ALARM MANUFACTURER PRIOR TO ROUGH-IN.

PROPOSED LOBBY POWER PLAN

SCALE: 1/8" = 1'-0"