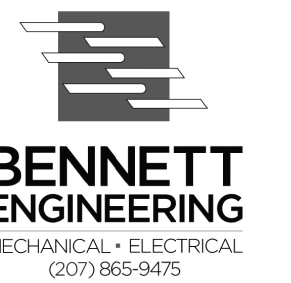


GENERAL NOTES:

REVISIONS:



5 FUNDY ROAD Phone: 207-781-3344
 FALMOUTH, ME 04105 Fax: 207-699-5564
 Online @ foresidearchitects.com

Project Status:
 Permit and Bid Set

Project Number:
 SRH0314

Seaside Rehabilitation
 and Healthcare Center
 Lobby / Rehab Renovation
 850 Baxter Boulevard
 Portland, Maine

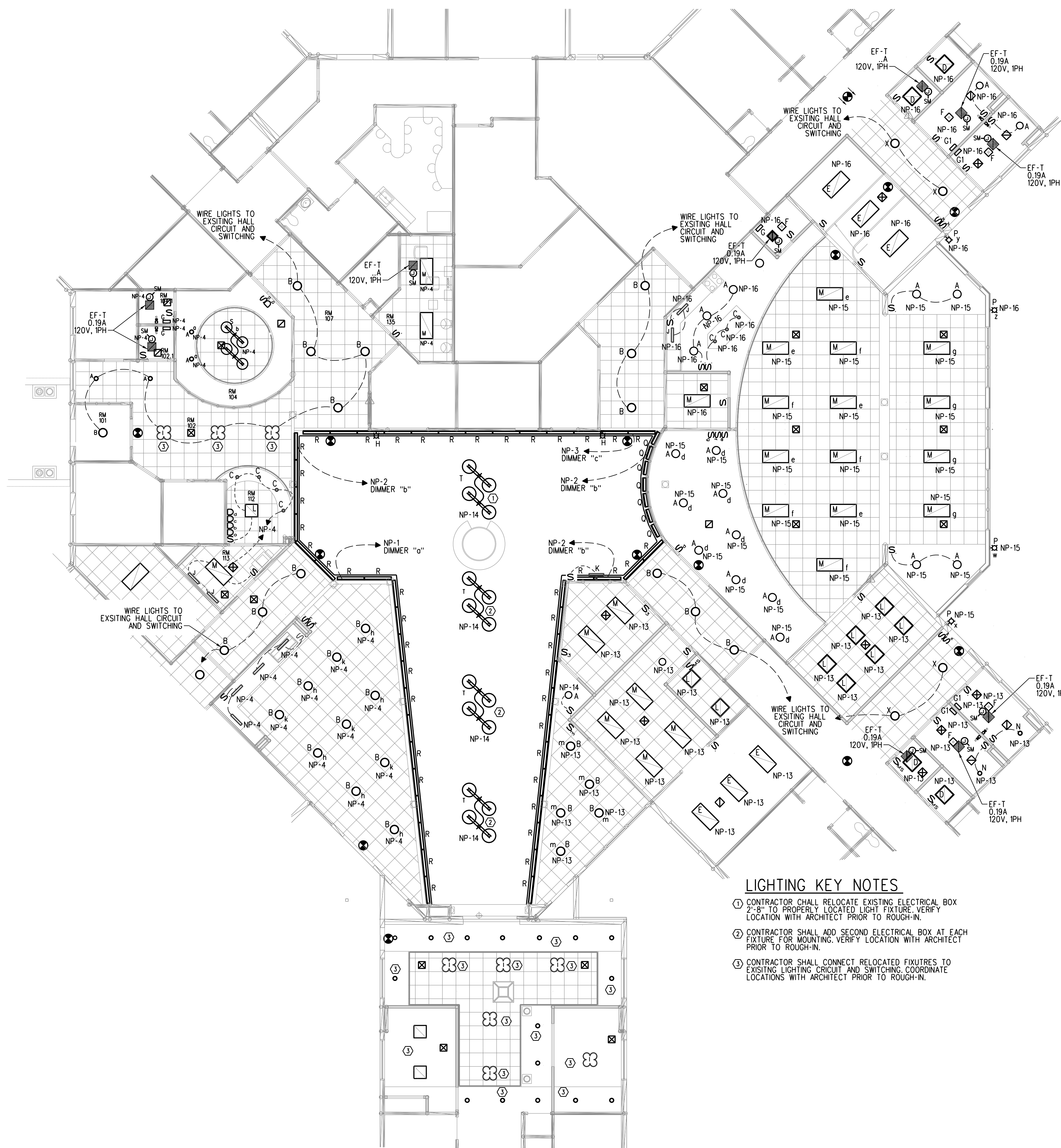
Drawing Name:
 LOBBY PROPOSED LIGHTING PLAN

Scale:
 1/8"=1'-0" OR
 AS NOTED

Date:
 07/18/14

SHEET:

E-2.2



LIGHTING FIXTURE SCHEDULE

- A ○ PRESCOLITE LIGHTING 6" CAN
 No FT60LIC-LB6LEDABL35K WH
 12W LED, 120V
- B ○ FORECAST LIGHTING No
 F615636NV
 PROVIDE WITH LED LAMPS
- C ○ FORECAST LIGHTING
 No 190166836
 PROVIDE WITH LED LAMPS
- D □ SURFACE MOUNTED
 COLUMBIA LIGHTING
 No SM22-424-FAA19-4EPU-GLR
 PRISMATIC LENS
 (4) 24W, 2', T5HO 3000K
- E □ SURFACE MOUNTED 2 X 4
 COLUMBIA LIGHTING
 No SM24-332-FAA19-3EPU-GLR
 PRISMATIC LENS
 (3) 32W, 4', T8, 3000K
- F □ FORECAST LIGHTING
 No F602536NV, 120V
 PROVIDE WITH LED LAMPS
- G □ FORECAST LIGHTING
 No FN0045836, 120V
 PROVIDE WITH LED LAMP
- G1 □ WAC LIGHTING
 No HR-2LED-T209-27-BN
 120V SHOWER LIGHT
- H ○ FORECAST LIGHTING
 No F541036NI, 120V
 PROVIDE CFL LAMPS
- I ○ REUSE SALVAGED FIXTURES
 PROVIDE LED LAMPS
- J □ UNDERCOUNTER LIGHT
 PHILLIPS LIGHTING
 No 523-000028-61
 120V, LED, 3000K
- K □ EUREKA CAUCUIN
 No 3442C-60
 (4) 10W HAL, BIPIN, G4 BASE
- L □ GRID MOUNTED 2x 2
 COLUMBIA LIGHTING
 No 4PS22-424C-SFAA19-4EPU-GLR
 PRISMATIC LENS
 (4) 24W, 2', T5HO 3000K
- M □ GRID MOUNTED 2x 4
 COLUMBIA LIGHTING
 No 4PS24-328C-SFAA19-3EPU-GLR
 PRISMATIC LENS
 (3) 28W, 4', T5 3000K
- N ○ PRESCOLITE LIGHTING
 No LB6LEDABL30K WH
 13W LED
- P □ FORECAST LIGHTING
 No F849741
 PROVIDE LED LAMPING
- Q □ 2' COVE UPLIGHT
 COLUMBIA LIGHTING
 No COV2-232-EDU-GLR
 (2) 32W, 4', 3000K
- R □ 4' COVE UPLIGHT
 COLUMBIA LIGHTING
 No COV4-232-EDU-GLR,
 (2) 32W, 4', 3000K
- S ○ ADVENT LIGHTING No AP9651
 (4) AN100 BAL 120 TL
 BRUSHED ALUMINUM
 PROVIDE WITH LED LAMPS
- T ○ ADVENT LIGHTING No AP9652
 (4) AN100 BAL 120 TL
 BRUSHED ALUMINUM
 PROVIDE WITH LED LAMPS
- X ○ REUSED SALVAGED
 CORRIDOR LIGHT

GRID MOUNTED 2x 2
 COLUMBIA LIGHTING
 No L1SER22-30HLG-C-ED-U-GLR
 LED, 3000K
 LED ALTERNATE #1

2' COVE UPLIGHT
 FINELITE
 No S11LED-2'-SO-3000K-SC-96W-120
 LED ALTERNATE #1

LIGHTING KEY NOTES

- 1 CONTRACTOR SHALL RELOCATE EXISTING ELECTRICAL BOX
 2'-8" TO PROPERLY LOCATED LIGHT FIXTURE. VERIFY
 LOCATION WITH ARCHITECT PRIOR TO ROUGH-IN.
- 2 CONTRACTOR SHALL ADD SECOND ELECTRICAL BOX AT EACH
 FIXTURE FOR MOUNTING. VERIFY LOCATION WITH ARCHITECT
 PRIOR TO ROUGH-IN.
- 3 CONTRACTOR SHALL CONNECT RELOCATED FIXTURES TO
 EXISTING LIGHTING CRICUIT AND SWITCHING. COORDINATE
 LOCATIONS WITH ARCHITECT PRIOR TO ROUGH-IN.

PROPOSED LIGHTING PLAN

SCALE: 1/8"=1'-0"