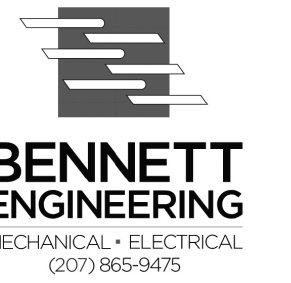


GENERAL NOTES:

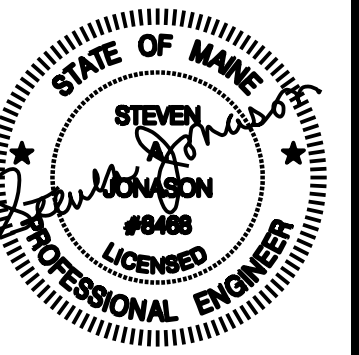
REVISIONS:



5 FUNDY ROAD Phone: 207-781-3344
 FALMOUTH, ME 04105 Fax: 207-699-5564
 Online @ foresidearchitects.com

Project Status:
 Permit and Bid Set

Project Number:
 SRH0314



Seaside Rehabilitation
 and Healthcare Center
 Lobby / Rehab Renovation
 850 Baxter Boulevard
 Portland, Maine

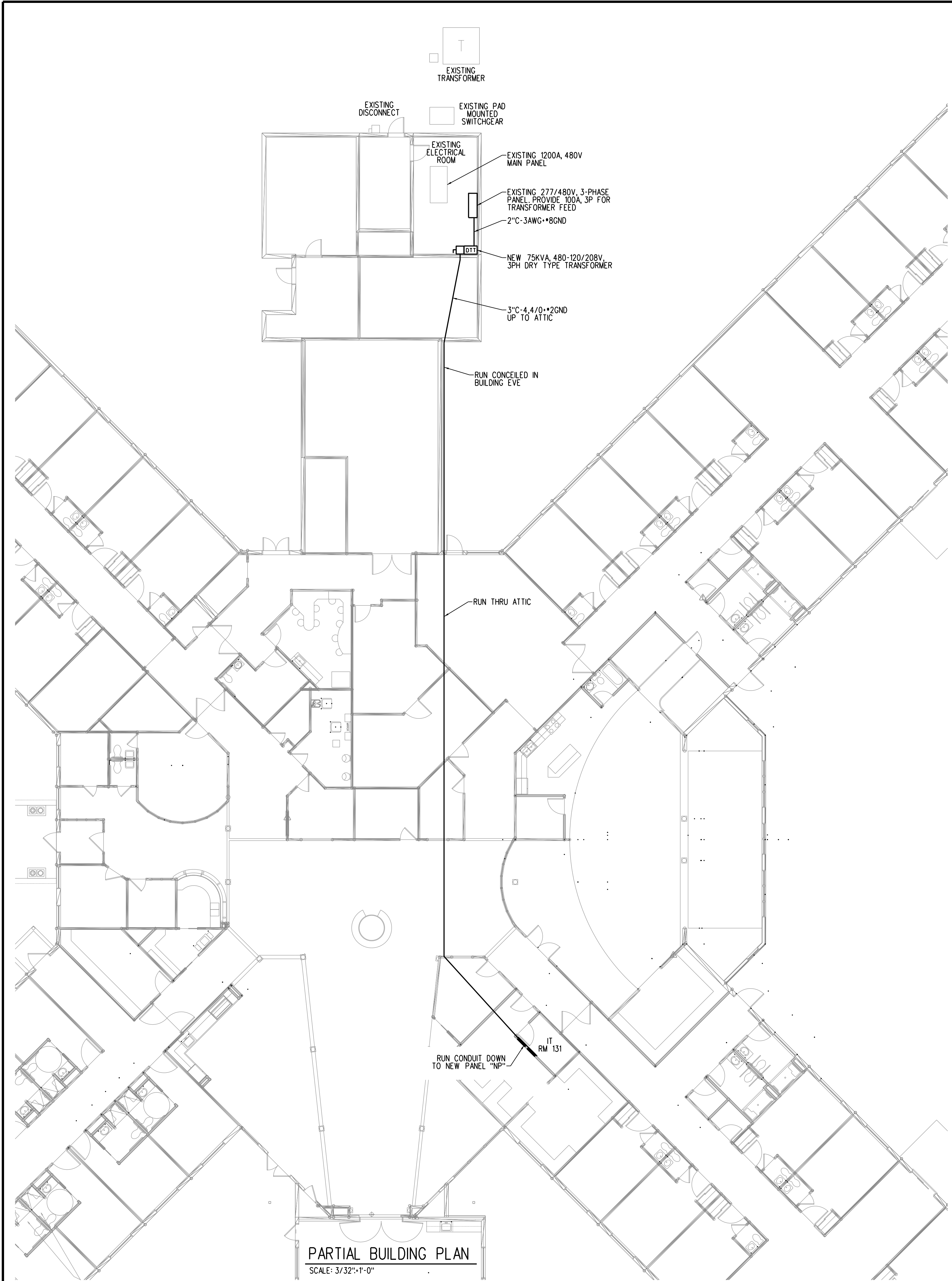
Drawing Name:
 PARTIAL BUILDING PLAN

Scale:
 AS NOTED

Date:
 07/18/14

SHEET:

E-1.1



PANEL NP (IT ROOM 131) SECTION 1 120/208 3PH 4W 225 AMP BUS - MCB 42K AIC NEMA TYPE 1 (RECESSED)

CKT #	LOAD DESCRIPTION	AT	P	CA	DF	DA	CKT #	LOAD DESCRIPTION	AT	P	CA	DF	DA
1	SOFFIT LIGHTS	20	1	10	1.00	10	2	SOFFIT LIGHTS	20	1	10	1.00	10
3	SOFFIT LIGHTS	20	1	10	1.00	10	4	LIGHTS RM's 102.1, 104, 104.1, 112, 113, 115 & 135	20	1	8	1.00	8
5	RECEPTION AREA RECEPITS	20	1	8	0.50	4	6	RECEPTION AREA RECEPITS	20	1	6	0.50	3
7	COPIER RM 113	20	1	14	0.50	7	8	LOBBY COUNTER RECEPIT	20	1	14	0.50	7
9	GREAT RM AQUARIUM	20	1	14	1.00	14	10	CORRIDOR MONITOR LOCATIONS	20	1	15	1.00	15
11	CORRIDOR MONITOR LOCATIONS	20	1	15	1.00	15	12	EQUIP RM 113 RECEPITS	20	1	8	0.50	4
13	LIGHTS RM's 116, 126, 127, 128, 131, 132 & 133	20	1	12	1.00	12	14	GREAT ROOM LIGHTS	20	1	13	1.00	13
15	LIGHTS RM 124	20	1	10	1.00	10	16	LIGHTS RM's 120, 122, 123, 137, 138, 139 & 140	20	1	10	1.00	10
17	RM 115 REFRIGERATOR	20	1	12	1.00	12	18	RESTROOMS 102.1 & 104.1 RECETPS	20	1	3	0.50	2
19	RM 115 COUNTER RECEPITS	20	1	3	0.50	2	20	CONFERENCE RM 104 RECEPITS	20	1	8	0.50	4
21	RM 115 COUNTER RECEPITS	20	1	3	0.50	2	22	OFFICE 132 RECEPITS	20	1	8	0.50	4
23	RM 115 COUNTER RECEPITS	20	1	3	0.50	2	24	OFFICE 132 RECEPITS	20	1	9	0.50	5
25	LIVING RM 116 RECEPITS	20	1	5	0.50	3	26	SERVER ROOM AND HALL 110 RECEPITS	20	1	3	0.50	2
27	ERSTROOMS 126 & 127 RECEPITS	20	1	3	0.50	2	28	SERVER	20	1	12	1.00	12
29	RESTROOM 126 HEATER	20	1	13	0.50	6	30	RESTROOM 127 HEATER	20	1	13	0.50	6
31	OFFICE 136 RECEPITS	20	1	8	0.50	4	32	REHAB RECEPITS	20	1	9	0.50	5
33	OFFICE 136 RECEPITS	20	1	8	0.50	4	34	REHAB & SPEECH RECEPITS	20	1	8	0.50	4
35	KITCHEN 139 REFRIGERATOR	20	1	12	1.00	12	36	KITCHEN 139 RANGE	50	2	32	0.50	16
37	KITCHEN 139 COUNTER RECEPITS	20	1	3	0.50	2	38				32	0.50	16
39	KITCHEN 139 DISHWASHER	20	1	12	0.50	6	40	ROOM's 119, 137 & 140 RECEPITS	20	1	12	0.50	6
41	KITCHEN 139 COUNTER RECEPITS	20	1	3	0.50	2	42	BATHROOMS 122 & 123 RECEPITS	20	1	3	0.50	2

PROVIDE WITH FEED THRU LUGS FOR SECTION 2

Section 1
 Tot Amps/PH - Connected Load 138.50
 Demand Factor 69.61%
 Total Amps/PH - Demand 96.42
 Connected KVA 49.84
 Demand KVA 34.69
 Min. Panel Size (Demand x 1.25) - Amps 120.52

PANEL NP (IT ROOM 131) SECTION 2 120/208 3PH 4W 225 AMP BUS - MLO 42K AIC NEMA TYPE 1 (RECESSED)

CKT #	LOAD DESCRIPTION	AT	P	CA	DF	DA	CKT #	LOAD DESCRIPTION	AT	P	CA	DF	DA
43	BATHROOM 122 HEATER	20	1	13	0.70	9	44	BATHROOM 123 HEATER	20	1	13	0.70	9
45	SCU-1	20	2	15	0.70	11	46	SCU-1A	20	2	13	0.70	9
47				15	0.70	11	48				13	0.70	9
49	KITCHEN 133 COUNTER RECEPIT	20	1	2	0.50	1	50	SAC-2A, SAC-2B, SAC-2C, & SAC-2D	15	2	4	0.70	3
51	KITCHEN 133 COUNTER RECEPIT	20	1	2	0.50	1	52				4	0.70	3
53	KITCHEN 133 COUNTER RECEPIT	20	1	2	0.50	1	54	KITCHEN 133 REFRIGERATOR	20	1	12	1.00	12
55	KITCHEN 133 COUNTER RECEPIT	20	1	2	0.50	1	56	KITCHEN 133 COUNTER RECEPIT	20	1	2	0.50	1
57	KITCHEN 133 COUNTER RECEPIT	20	1	2	0.50	1	58	KITCHEN 133 COUNTER RECEPIT	20	1	2	0.50	1
59	KITCHEN 133 HOTPLATE	20	1	15	0.70	11	60	KITCHEN 133 UNDERCOUNTER FREEZER	20	1	12	1.00	12
61	KITCHEN 133 COMMERCIAL HOOD	20	1	15	1.00	15	62	KITCHEN 133 COUNTER RECEPIT	20	1	2	0.50	1
63	KITCHEN 133 UNDERCOUNTER REFRIGERATOR	20	1	12	1.00	12	64	KITCHEN 133 COUNTER RECEPIT	20	1	2	0.50	1
65	KITCHEN 133 COUNTER RECEPIT	20	1	2	0.50	1	66	EF-1 ON ROOF	20	1	10	0.70	7
67	SPARE	20	1			0	68	SPARE	20	1			0
69	SPARE	20	1			0	70	SPARE	20	1			0
71	SPARE	20	1			0	72	SPARE	20	1			0
73	SPARE	20	1			0	74	SPARE	20	1			0
75	SPARE	20	1			0	76	SPARE	20	1			0
77	SPARE	20	1			0	78	SPARE	20	1			0
79	SPARE	20	1			0	80	SPARE	20	1			0
81	SPARE	20	1			0	82	SPARE	20	1			0
83	SPARE	20	1			0	84	SPARE	20	1			0

Section 2
 Tot Amps/PH - Connected Load 61.67
 Demand Factor 76.11%
 Total Amps/PH - Demand 46.93
 Connected KVA 22.19
 Demand KVA 16.89
 Min. Panel Size (Demand x 1.25) - Amps 58.67

Total Combined Load
 Tot Amps/PH - Connected Load 200.17
 Demand Factor 0.914685
 Total Amps/PH - Demand 143.35
 Connected KVA 72.03
 Demand KVA 51.58
 Min. Panel Size (Demand x 1.25) - 179.19

- NOTES:
 1. PROVIDE ARC FAULT TYPE CIRCUIT BREAKERS IN ACCORDANCE WITH NEC 210.12
 2. PROVIDE TAMPER RESISTANT OUTLETS PER NEC 406.11 SECTION 210.52