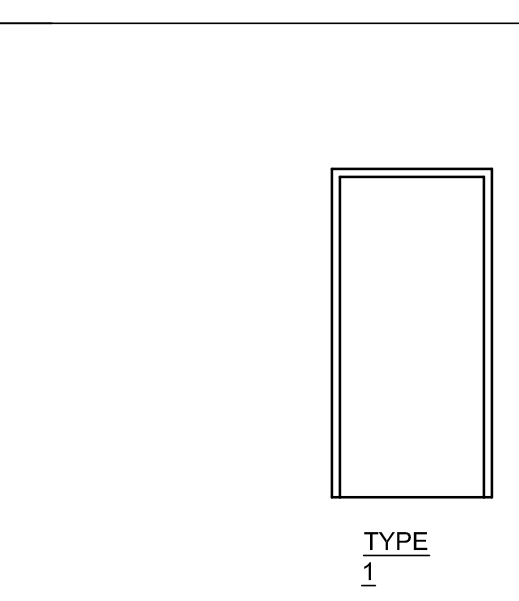


DOOR AND FRAME SCHEDULE (Wing I)														
MARK	DOOR			EL	GLAZING	LOUVER		FRAME			FIRE RATING LABEL	HARDWARE		NOTES
	WD	HGT	THK			MATL	WD	HGT	MATL	EL		HEAD	JAMB	
101A	3'-8"	6'-8"	1 1/2"	WD	A	-	-	STEEL	1				10	
101.1A	3'-4"	6'-8"	1 1/2"	WD	E	-	-	STEEL	2				9	
102A	3'-8"	6'-8"	1 1/2"	WD	A	-	-	STEEL	1				10	
102.1A	3'-4"	6'-8"	1 1/2"	WD	E	-	-	STEEL	2				9	
103A	3'-8"	6'-8"	1 1/2"	WD	A	-	-	STEEL	1				10	
103.1A	3'-4"	6'-8"	1 1/2"	WD	E	-	-	STEEL	2				9	
104A	3'-8"	6'-8"	1 1/2"	WD	A	-	-	STEEL	1				10	
104.1A	3'-4"	6'-8"	1 1/2"	WD	E	-	-	STEEL	2				9	
105A	3'-8"	6'-8"	1 1/2"	WD	A	-	-	STEEL	1				10	
105.1A	3'-4"	6'-8"	1 1/2"	WD	E	-	-	STEEL	2				9	
106A	3'-8"	6'-8"	1 1/2"	WD	A	-	-	STEEL	1				10	
106.1A	3'-4"	6'-8"	1 1/2"	WD	E	-	-	STEEL	2				9	
107A	3'-8"	6'-8"	1 1/2"	WD	A	-	-	STEEL	1				10	
107.1A	3'-4"	6'-8"	1 1/2"	WD	E	-	-	STEEL	2				9	
108A	3'-8"	6'-8"	1 1/2"	WD	A	-	-	STEEL	1				10	
108.1A	3'-4"	6'-8"	1 1/2"	WD	E	-	-	STEEL	2				9	
109A	3'-8"	6'-8"	1 1/2"	WD	A	-	-	STEEL	1				10	
109.1A	3'-4"	6'-8"	1 1/2"	WD	E	-	-	STEEL	2				9	
110A	3'-8"	6'-8"	1 1/2"	WD	A	-	-	STEEL	1				10	
110.1A	3'-4"	6'-8"	1 1/2"	WD	E	-	-	STEEL	2				9	
110.1B	3'-4"	6'-8"	1 1/2"	WD	E	-	-	STEEL	2				9	
111A	3'-8"	6'-8"	1 1/2"	WD	A	-	-	STEEL	1				10	
111.1A	3'-4"	6'-8"	1 1/2"	WD	E	-	-	STEEL	2				9	
112A	3'-8"	6'-8"	1 1/2"	WD	A	-	-	STEEL	1				10	
113A	3'-8"	6'-8"	1 1/2"	WD	A	-	-	STEEL	1				10	
113.1A	3'-4"	6'-8"	1 1/2"	WD	E	-	-	STEEL	2				9	
114A	3'-8"	6'-8"	1 1/2"	WD	A	-	-	STEEL	1				10	
114.1A	3'-4"	6'-8"	1 1/2"	WD	E	-	-	STEEL	2				9	
115A	3'-8"	6'-8"	1 1/2"	WD	A	-	-	STEEL	1				10	
115.1A	3'-4"	6'-8"	1 1/2"	WD	E	-	-	STEEL	2				9	
116A	3'-8"	6'-8"	1 1/2"	WD	A	-	-	STEEL	1				10	
116.1A	3'-4"	6'-8"	1 1/2"	WD	E	-	-	STEEL	2				9	
117A	3'-8"	6'-8"	1 1/2"	WD	A	-	-	STEEL	1				10	
117.1A	3'-4"	6'-8"	1 1/2"	WD	E	-	-	STEEL	2				9	
118A	3'-8"	6'-8"	1 1/2"	WD	A	-	-	STEEL	1				10	
118.1A	3'-4"	6'-8"	1 1/2"	WD	E	-	-	STEEL	2				9	
119A	3'-8"	6'-8"	1 1/2"	WD	A	-	-	STEEL	1				10	
119.1A	3'-4"	6'-8"	1 1/2"	WD	E	-	-	STEEL	2				9	
120A	3'-8"	6'-8"	1 1/2"	WD	A	-	-	STEEL	1				10	
120.1A	2'-8"	6'-8"	1 1/2"	WD	B	-	-	STEEL	1				8	
121A	3'-8"	6'-8"	1 1/2"	WD	A	-	-	STEEL	1				10	
121.1A	2'-8"	6'-8"	1 1/2"	WD	B	-	-	STEEL	1				8	
123A	3'-6"	6'-8"	1 1/2"	STL	-	-	-	STEEL	-				-	EXIST DELAYED EGRESS EXIT WITH EXT KEYPAD
125A	3'-0"	6'-8"	1 1/2"	WD	A	-	-	STEEL	1				18	
126A	3'-0"	6'-8"	1 1/2"	WD	A	-	-	STEEL	1				7	45 MIN
127A	3'-0"	6'-8"	1 1/2"	WD	-	-	-	STEEL	-				-	RELOCATE EXIST
128A	3'-0"	6'-8"	1 1/2"	WD	A	-	-	STEEL	1				16	
130A	3'-0"	6'-8"	1 1/2"	WD	A	-	-	STEEL	1				11	
131A	3'-0"	6'-8"	1 1/2"	WD	B	-	-	STEEL	1				13	
132A	3'-8"	7'-8"	1 1/2"	STL	C	-	-	STEEL	3				1	GALV EXTERIOR W/ DELAYED EGRESS

7 DOOR SCHEDULE
SCALE: NTS

HARDWARE SCHEDULE

10 DOOR TYPES
SCALE: 1/4" = 1'-0"



11 DOOR FRAME TYPES
SCALE: 1/4" = 1'-0"



2 DOOR JAMB
SCALE: 3" = 1'-0"

SCALE: 3" = 1'-0"

5 DOOR JAMB
SCALE: 3" = 1'-0"

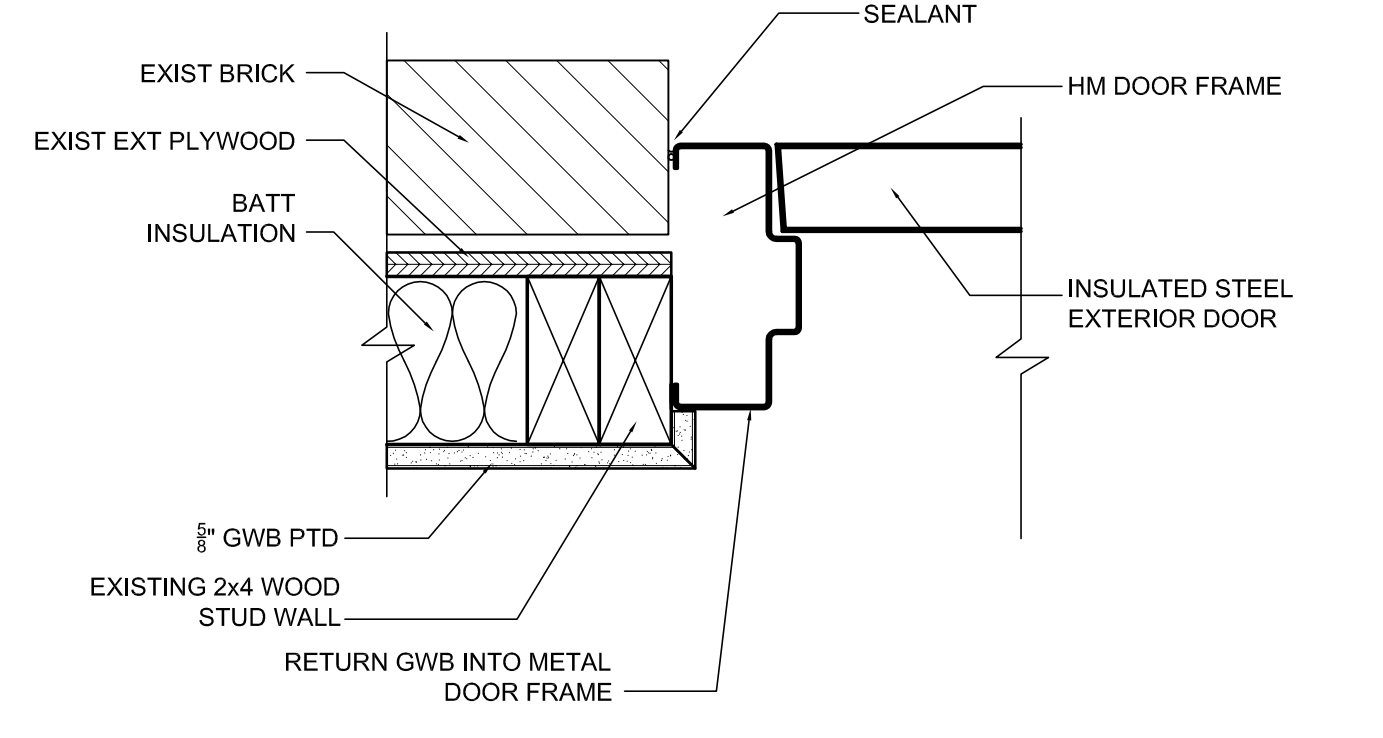
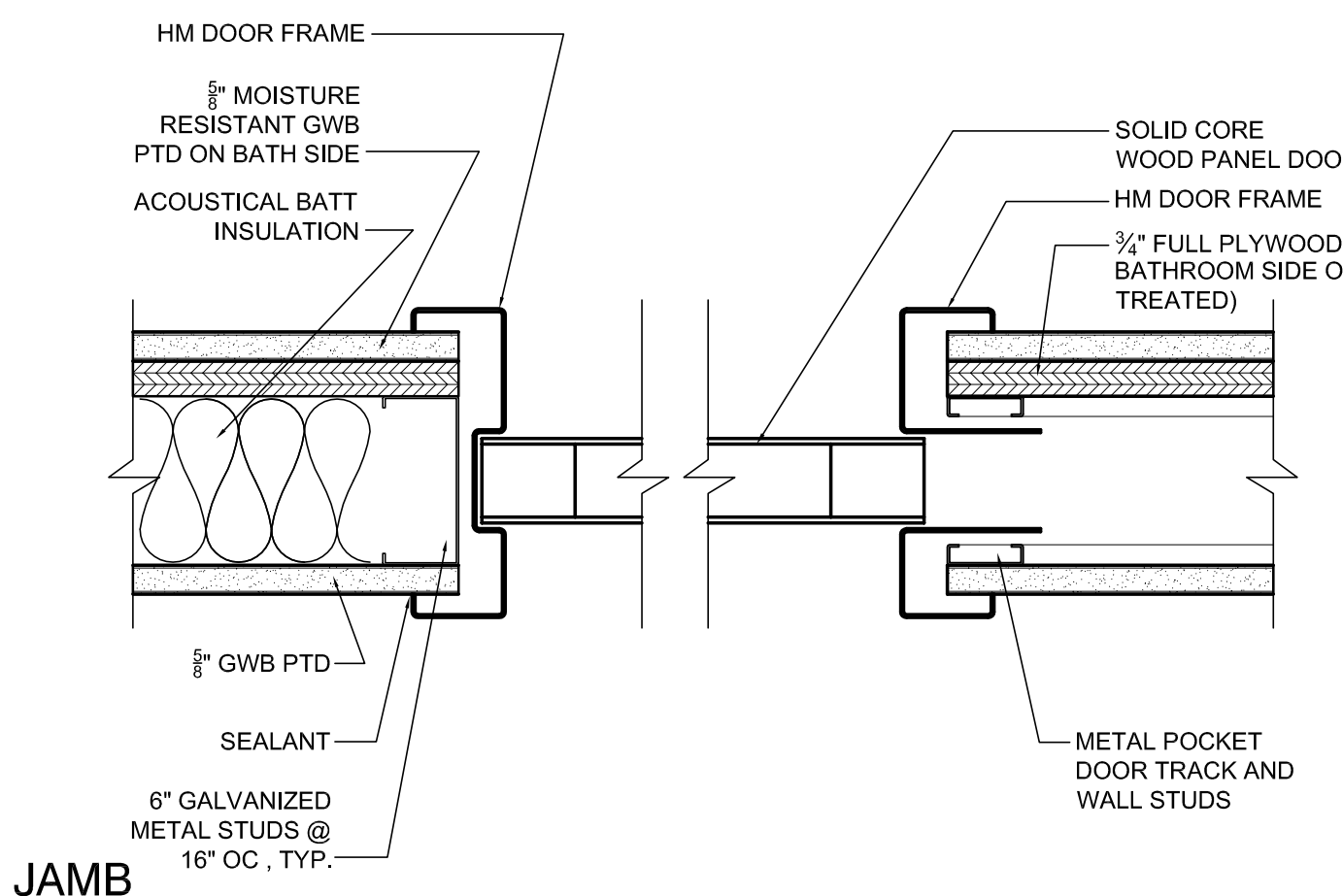
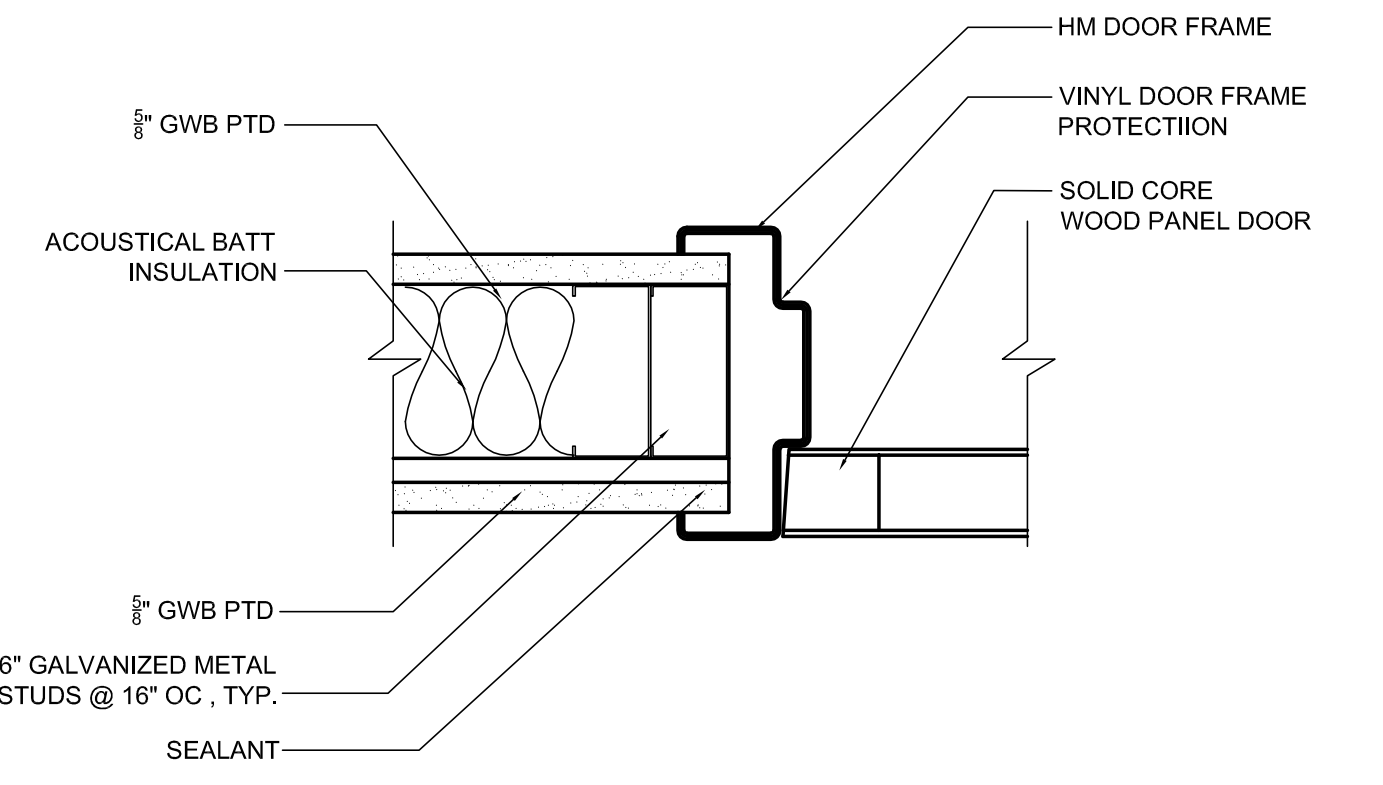
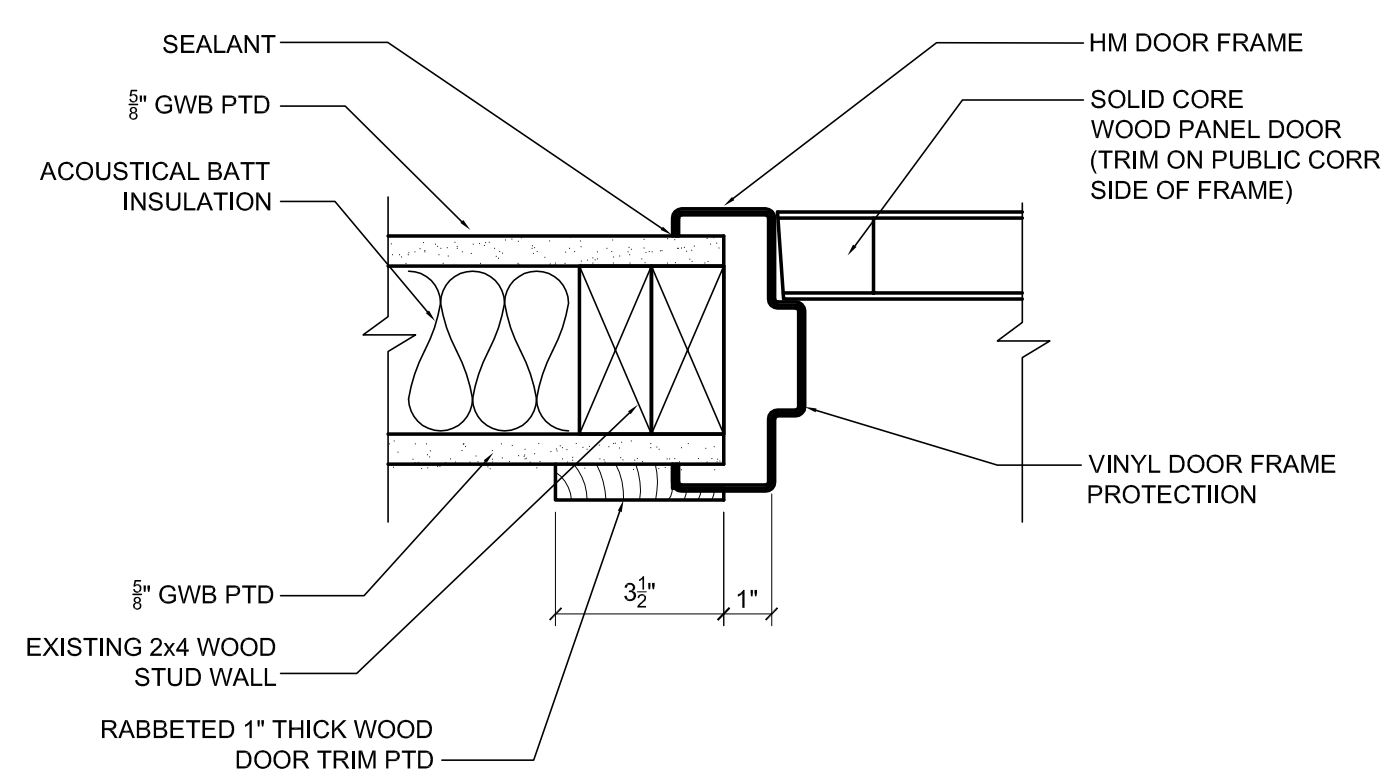
SCALE: 3" = 1'-0"

8 DOOR JAMB
SCALE: 3" = 1'-0"

SCALE: 3" = 1'-0"

12 JAMB DETAIL
SCALE: 3" = 1'-0"

SCALE: 3" = 1'-0"



HARDWARE SCHEDULE

- HW 1: ELECTRIC HINGE, HINGES, DELAYED EGRESS RIM EXIT DEVICE, EXTERIOR CYLINDER, POWER SUPPLY, EMERGENCY DECAL, PULL, CLOSER CUSH STOP, KICK PLATE, THRESHOLD, SWEEP, DOOR BUTTOM, CYLINDERS, BRUSH WEATHERSTRIPPING
 - HW7: HINGES, LOCKSET (STOREROOM FUNCTION T581) CLOSER W/ DELAY ACTION CLOSING (PULL SIDE MOUNTED) KICK PLATE, WALL STOP, SILENCERS
 - HW8: PIVOT HINGE, HOSPITAL LATCHSET, 2 WALL STOPS
 - HW9: POCKET SLIDING DOOR HARDWARE, (STOP DOORS WITH LEADING EDGE PROJECTING 4" INTO OPENING) PULLS 6" X 3/4" CONCEALED MOUNT (PROVIDE 1 1/2" CLEARANCE BETWEEN FRAME AND PULL) FULL HEIGHT DOOR EDGE PROTECTOR
 - HW10: HINGES, LATCHSET, (PASSAGE FUNCTION T101) WALL STOP, SILENCERS
 - HW11: HINGES, LOCKSET (STOREROOM FUNCTION W581) WALL STOP, SILENCERS
 - HW13: HINGES, LOCKSET (STOREROOM FUNCTION T581) WALL STOP, SILENCERS (OFF MASTER KEY)
 - HW16: HINGES LATCH SET (PASSAGE FUNCTION T101) WALL STOP, SILENCERS
 - HW18: HINGES, LOCKSET (OFFICE FUNCTION T101) WALL STOP, SILENCERS
- NOTE: SEE SPECIFICATIONS FOR HARDWARE DETAILS

3 HARDWARE SCHEDULE
SCALE: NTS

6 EMPTY
SCALE: NTS

9 EMPTY
SCALE: NTS

13 EMPTY
SCALE: NTS

COPYRIGHT 2014
REUSE OR REPRODUCTION OF THE CONTENTS OF
THIS DOCUMENT IS NOT PERMITTED WITHOUT
WRITTEN PERMISSION OF FORESIDE ARCHITECTS

GENERAL NOTES:

- REPORT AN DISCREPANCIES TO THE ARCHITECT. CONTRACTOR SHALL PROCEED WITH WORK ONLY AFTER DISCREPANCIES HAVE BEEN RESOLVED BY THE ARCHITECT.
- EXISTING BUILDING COMPONENTS AND WORK CURRENTLY COMPLETED AND IN PLACE DURING CONSTRUCTION WHICH IS AFFECTED BY NEW WORK AND DEMOLITION, OR WHICH MAY BE DAMAGED BY THE CONTRACTOR OR ANY SUBCONTRACTOR, SHALL BE REPLACED OR RESTORED TO THE ORIGINAL CONDITION AND COLOR AS APPROVED BY THE ARCHITECT.
- THE BUILDING SHALL BE CONSTRUCTED TO CONFORM W/ ALL GOVERNING CODES INCLUDING 2009 IBC (MUBEC), NFPA 101 2009, MAINE HUMAN RIGHTS COMMISSION GUIDELINES, STATE OF MAINE PLUMBING CODE, NEC 2005, AND ANSI.
- ALL EXISTING CONDITIONS ARE TO BE FIELD VERIFIED BY THE CONTRACTOR PRIOR TO FABRICATION. THIS INCLUDES DELIVERY PROCEDURES, DIMENSIONS AND MATERIALS.
- DRAWINGS ARE NOT TO BE SCALED. CONTRACTOR SHALL VERIFY DIMENSIONS AND CONDITIONS. APPARENT DISCREPANCIES REQUIRING CLARIFICATION SHALL BE DIRECTED TO THE ARCHITECT PRIOR TO COMMENCEMENT OF THE WORK IN QUESTION.
- DEMOLITION MAY REQUIRE SELECTIVE REMOVAL OF EXISTING MATERIALS, TEMPORARY BRACING AND STRUCTURAL SHORING. REMOVAL OF ALL MATERIALS DISMANTLED NOT INTENDED FOR REUSE SHALL BE DISPOSED OF IN COMPLIANCE WITH LOCAL REGULATIONS.
- THIS PROJECT SHALL NOT CONTAIN HAZARDOUS MATERIALS OF ANY TYPE, INCLUDING BUT NOT LIMITED TO ASBESTOS.
- THE CONTRACTOR SHALL OBTAIN ALL REQUIRED PERMITS FROM THE APPROPRIATE OFFICIALS PRIOR TO COMMENCING THE WORK AND INSPECTIONS AND APPROVALS UPON COMPLETION OF THE WORK.
- WHERE ONLY A SINGLE PRODUCT OR MANUFACTURER IS NAMED, PROVIDE THE PRODUCT INDICATED. SUBSTITUTIONS SHALL BE PERMITTED ONLY WHEN APPROVED BY THE OWNER OR THE OWNER'S AUTHORIZED REPRESENTATIVE THROUGH WRITTEN DIRECTIVE.
- THE LOCATION OF ALL DOOR FRAMES NOT DIMENSIONED SHALL BE 4" FROM ADJACENT WALLS UNLESS OTHERWISE INDICATED.
- ALL PARTITIONS SHALL EXTEND FROM FLOOR TO UNDERSIDE OF SUPPORTING STRUCTURE ABOVE UNLESS OTHERWISE NOTED.
- INSTALL BLOCKING BEHIND ALL SURFACE APPLIED FIXTURES, TRIM, GRAB BARS, SHELVES, CHAIR RAILS, PICTURE RAILS AND BASE MOLDINGS.
- AT PROJECT CLOSEOUT, SUBMIT SPECIFIC WARRANTIES, WORKMANSHIP BONDS, MAINTENANCE AGREEMENTS, FINAL CERTIFICATIONS AND SIMILAR DOCUMENTS.
- COMPLETE FINAL CLEANUP AT PROJECT CLOSEOUT. TOUCH-UP, REPAIR AND RESTORE ALL MARRED EXPOSED FINISHES.
- IF TWO CONFLICTING CONDITIONS OR DETAILS EXIST IN THIS DRAWING SET OR ASSOCIATED SPECIFICATIONS THE CONTRACTOR SHALL MAKE THEM KNOWN TO THE ARCHITECT. IT SHALL BE THE ARCHITECT'S CHOICE TO DECIDE WHICH CONDITION OR DETAIL APPLIES, AT NO ADDITIONAL COST.

REVISIONS:

FORESIDE ARCHITECTS
LLC

5 FUNDY ROAD Phone: 207-781-3344
FALMOUTH, ME 04105 Fax: 207-699-5564
Online @ foresidearchitects.com

Project Status:
PERMIT &
BID SET

Project Number:

Seaside Rehabilitation
and Healthcare Center
850 Baxter Boulevard
Portland, Maine

Drawing Name:
**DOOR SCHEDULE &
DETAILS**

Scale:
AS NOTED

SHEET:
A701

Date:
02/07/14