

GENERAL NOTES:

FOOTING SCHEDULE		
MARK	SIZE	REINF
F3	3'-0"x3'-0"x1'-0"	4#4 E.W.B.
F36	3'-6"x3'-6"x1'-0"	4#5 E.W.B.
F46	4'-6"x4'-6"x1'-0"	5#5 E.W.B.
F5	5'-0"x5'-0"x1'-0"	6#5 E.W.B.
F56	5'-6"x5'-6"x1'-2"	6#5 E.W.B.
F6	6'-0"x6'-0"x1'-2"	7#5 E.W.B.
F66	6'-6"x6'-6"x1'-4"	8#5 E.W.B.
F4070	4'-0"x7'-0"x1'-4"	8#5 S.W.B. 5#5 L.W.B.
F5090	5'-0"x9'-0"x1'-6"	10#5 S.W.B. 5#5 L.W.B.
F8	8'-0"x8'-0"x2'-0"	6#7 E.W. T&B



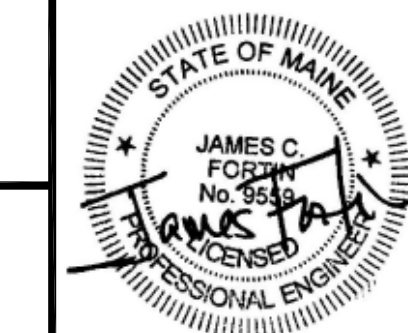
REVISIONS:



5 FUNDY ROAD Phone: 207-781-3344
 FALMOUTH, ME 04105 Fax: 207-699-5564
 Online @ foresidearchitects.com

Project Status:
 BID SET

Project Number:
 SR0712
 BSE WO# 2908



Seaside Rehabilitation
 and Health Care Center
 850 Baxter Blvd
 Portland, ME

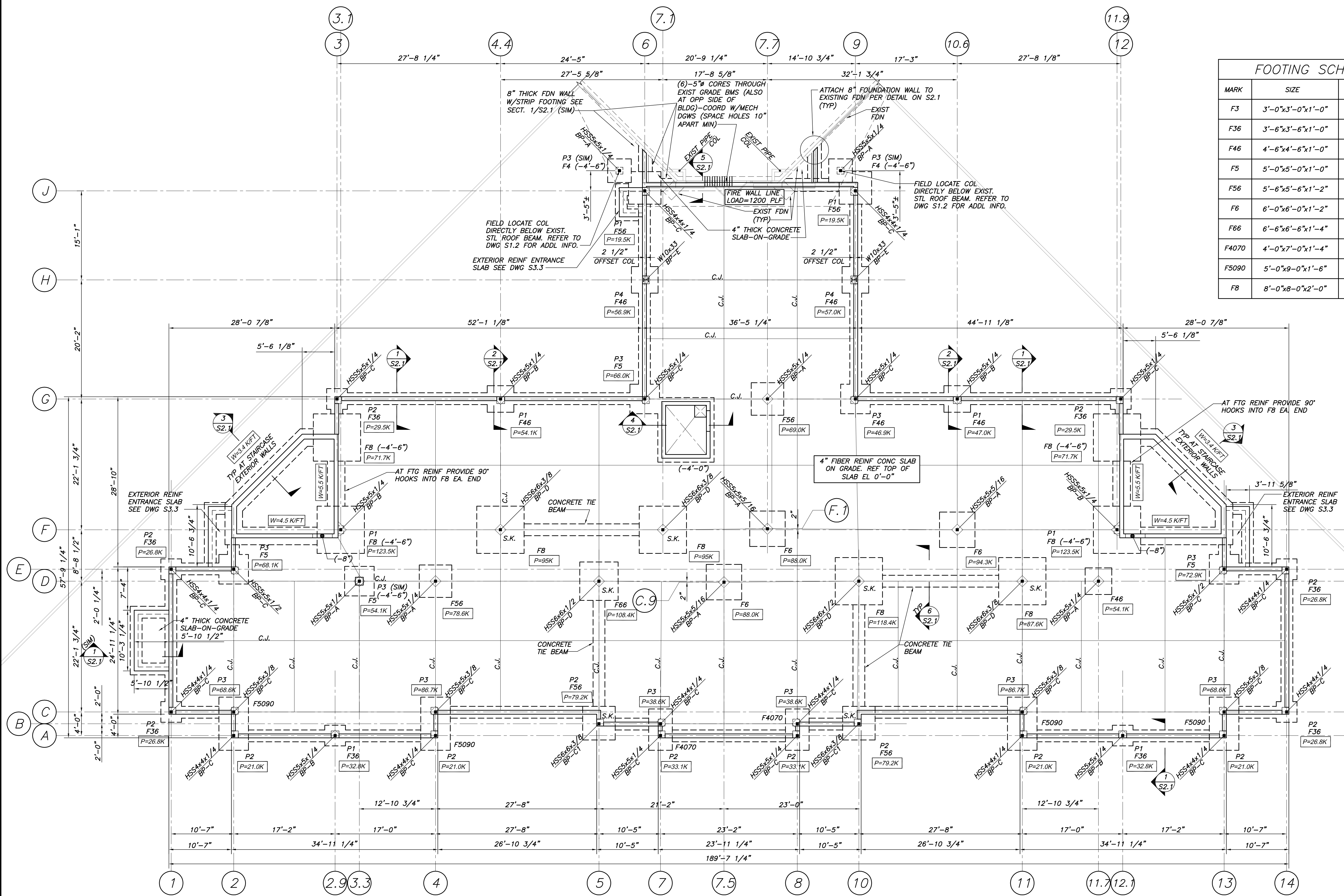
Drawing Name:
 Foundation Plan

Scale:
 NOTED

SHEET

Date:
 10/29/2012

S1.1



- NOTES FOR RAMMED AGGREGATE PIER BID PACKAGE ONLY:
- SLAB ON GRADE LIVE LOADS:
 RESIDENT ROOMS: 40 PSF
 LOBBIES/CORRIDORS/PUBLIC SPACES: 100 PSF
 INDICATES COLUMN TOTAL UNFACTORED LOAD. DOES NOT INCLUDE FOOTING SELF WEIGHT OR OVERBURDEN.
 - P= INDICATES UNIFORM WALL LINE LOAD AT LOAD BEARING STAIR WALLS.
 - W= INDICATES UNIFORM WALL LINE LOAD AT LOAD BEARING STAIR WALLS.
 - FOUNDATIONS ARE BASED ON AN ALLOWABLE NET BEARING CAPACITY OF 3000 PSF.

FOUNDATION PLAN
 1/8"=1'-0"

- NOTES:
- REF TOP OF SLAB EL 0'-0" = DATUM EL 15'-10 1/4"
 - TOP OF WALL EL 0'-0" U.N.O.
 - BP-A, BP-B, ETC INDICATES BASE PLATE TYPE. SEE DETAILS DWG S3.1.
 - COORD ALL FLOOR DRAINS (W/ASSOCIATED SLOPES) W/ARCH DWGS.
 - TOP OF INTERIOR FOOTING EL (-1'-0") U.N.O.
 - TOP OF EXTERIOR FOOTING EL (-4'-6") U.N.O.
 - TOP OF PIER EL (-8") U.N.O.