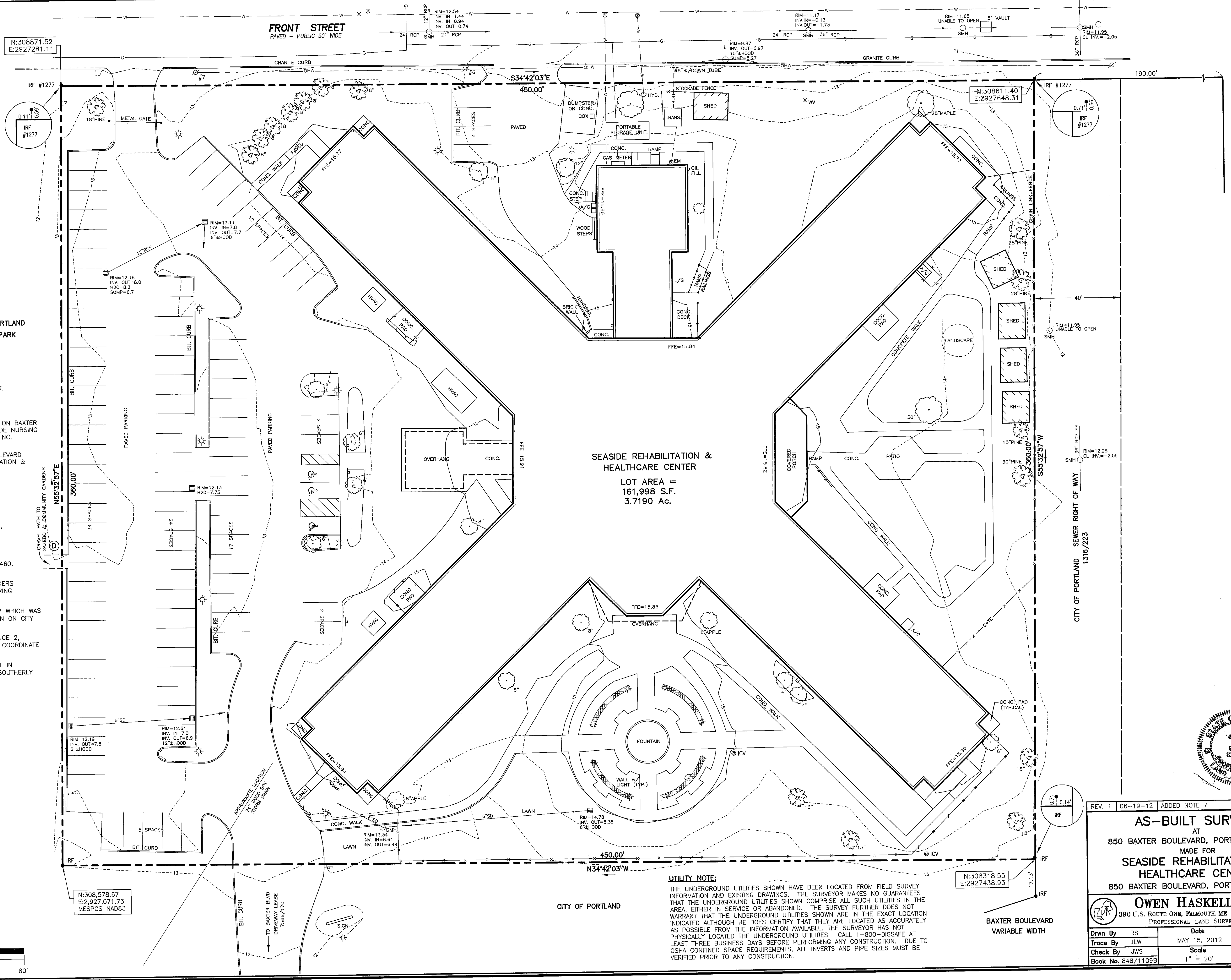
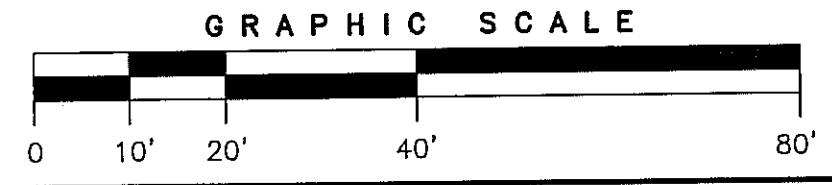


CITY OF PORTLAND
PAYSON PARK

- PLAN REFERENCES:**
- "STANDARD BOUNDARY SURVEY OF PAYSON PARK, PORTLAND, MAINE MADE FOR CITY OF PORTLAND FEB. 26, 2001" OWEN HASKELL, INC. REVISED 11/27/01.
 - "STANDARD BOUNDARY & TOPOGRAPHIC SURVEY ON BAXTER BOULEVARD, PORTLAND, MAINE MADE FOR SEASIDE NURSING HOME" AUGUST 17, 1998 BY OWEN HASKELL, INC.
 - "STANDARD BOUNDARY SURVEY ON BAXTER BOULEVARD PORTLAND, MAINE MADE FOR SEASIDE REHABILITATION & HEALTHCARE CENTER" AUGUST 17, 1998 REV. 2 3-19-07 BY OWEN HASKELL, INC.

- NOTES:**
- OWNER OF RECORD: SEASIDE HEALTHCARE LLC, C.C.R.D. BOOK 13413 PAGE 20.
 - LOCUS IS SHOWN AS PORTLAND ASSESSORS LOT 166-A-10.
 - LOCUS IS SUBJECT TO RESTRICTIONS IN 3082/460. NO DRAIN LINE LOCATION DETERMINED.
 - FRONT STREET DETERMINED FROM STREET MARKERS AND TIES OF BUILDINGS AS PER CITY ENGINEERING DEPARTMENT RECORDS.
 - ELEVATIONS ARE BASED ON PLAN REFERENCE 2 WHICH WAS BASED ON MANHOLE RIM ELEVATIONS AS SHOWN ON CITY STORM AND SEWER PLAN.
 - BEARINGS SHOW ARE BASED ON PLAN REFERENCE 2, COORDINATES SHOWN ARE MAINE STATE PLANE COORDINATE SYSTEM NAD 1983 OBTAINED WITH RTK GPS.
 - BENCH MARK: DISK STAMPED PO-295-29 SET IN CONCRETE PAD AT SEWER PUMP STATION ON SOUTHERLY SIDE OF BAXTER BOULEVARD ELEVATION 11.97

- LEGEND:**
- IRON PIPE OR ROD FOUND
 - ⊙ ICV
 - ⊙ IRRIGATION CONTROL VALVE
 - ⊙ LIGHT POLE
 - ⊙ WATER VALVE
 - ⊙ HYDRANT
 - ⊙ MANHOLE
 - ⊙ CATCH BASIN
 - ⊙ SIGN
 - UGE UNDERGROUND ELECTRIC
 - - - GAS
 - OHW OVERHEAD WIRES
 - CHAIN LINK FENCE
 - CURB
 - 14 1' CONTOUR



UTILITY NOTE:
THE UNDERGROUND UTILITIES SHOWN HAVE BEEN LOCATED FROM FIELD SURVEY INFORMATION AND EXISTING DRAWINGS. THE SURVEYOR MAKES NO GUARANTEES THAT THE UNDERGROUND UTILITIES SHOWN COMPRISE ALL SUCH UTILITIES IN THE AREA, EITHER IN SERVICE OR ABANDONED. THE SURVEY FURTHER DOES NOT WARRANT THAT THE UNDERGROUND UTILITIES SHOWN ARE IN THE EXACT LOCATION INDICATED ALTHOUGH HE DOES CERTIFY THAT THEY ARE LOCATED AS ACCURATELY AS POSSIBLE FROM THE INFORMATION AVAILABLE. THE SURVEYOR HAS NOT PHYSICALLY LOCATED THE UNDERGROUND UTILITIES. CALL 1-800-DIGSAFE AT LEAST THREE BUSINESS DAYS BEFORE PERFORMING ANY CONSTRUCTION. DUE TO OSHA CONFINED SPACE REQUIREMENTS, ALL INVERTS AND PIPE SIZES MUST BE VERIFIED PRIOR TO ANY CONSTRUCTION.



REV. 1 06-19-12 | ADDED NOTE 7

AS-BUILT SURVEY
AT
850 BAXTER BOULEVARD, PORTLAND, MAINE
MADE FOR
SEASIDE REHABILITATION & HEALTHCARE CENTER
850 BAXTER BOULEVARD, PORTLAND, MAINE

OWEN HASKELL, INC.
390 U.S. ROUTE ONE, FALMOUTH, ME 04105 (207) 774-0424
PROFESSIONAL LAND SURVEYORS

Drawn By	RS	Date	Job No.
Trace By	JLW	MAY 15, 2012	2012-060P
Check By	JWS	Scale	Drwg. No.
Book No. 848/1109B		1" = 20'	1