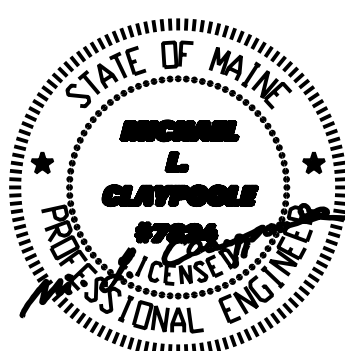
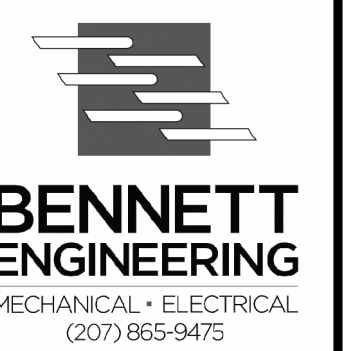


GENERAL NOTES:

REVISIONS:



5 Fundy Road Phone: 207-781-3344  
 Falmouth, Maine 04105 Fax: 207-699-5564  
 Online @ foresidearchitects.com

Project Status:  
 Bid Set

Project Number:  
 SR0712

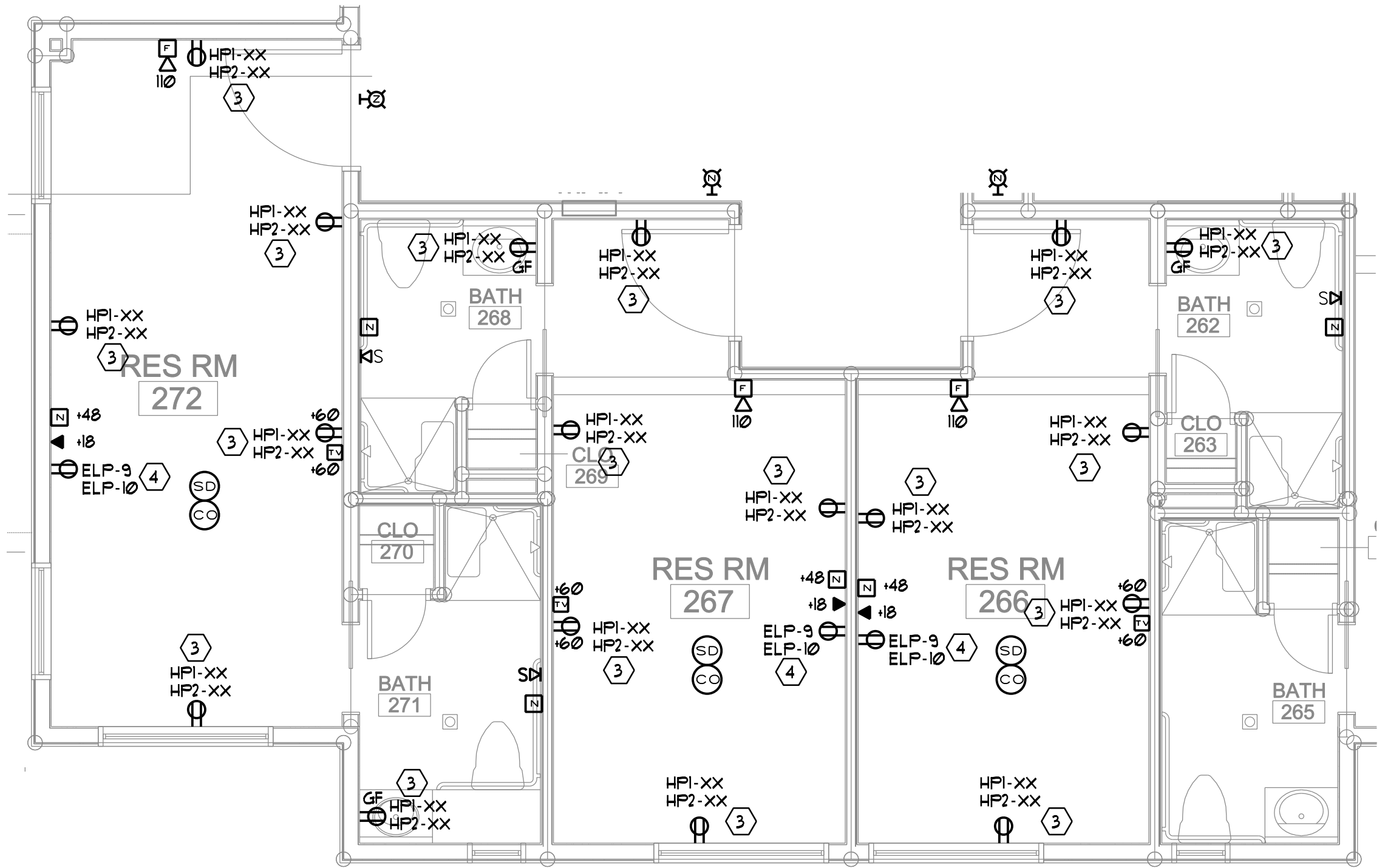
Project Title:  
 Seaside Rehab & Healthcare Center  
 850 Baxter Blvd  
 Portland, ME

Drawing Name:  
 SECOND FLOOR FLOOR POWER PLAN

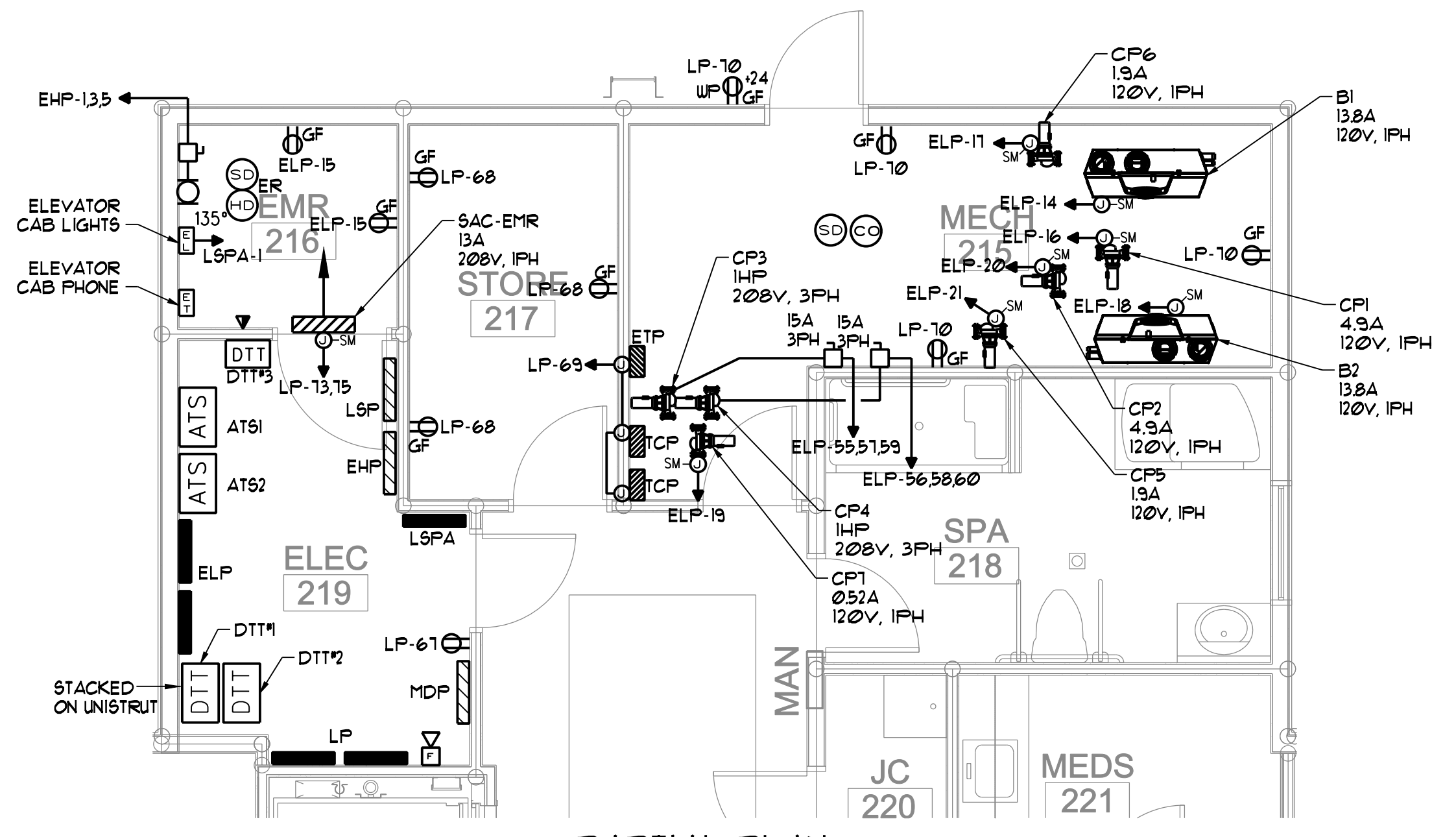
Scale:  
 1/8"=1'-0" OR  
 AS NOTED

Date:  
 10/29/12

SHEET  
**E-3.1**



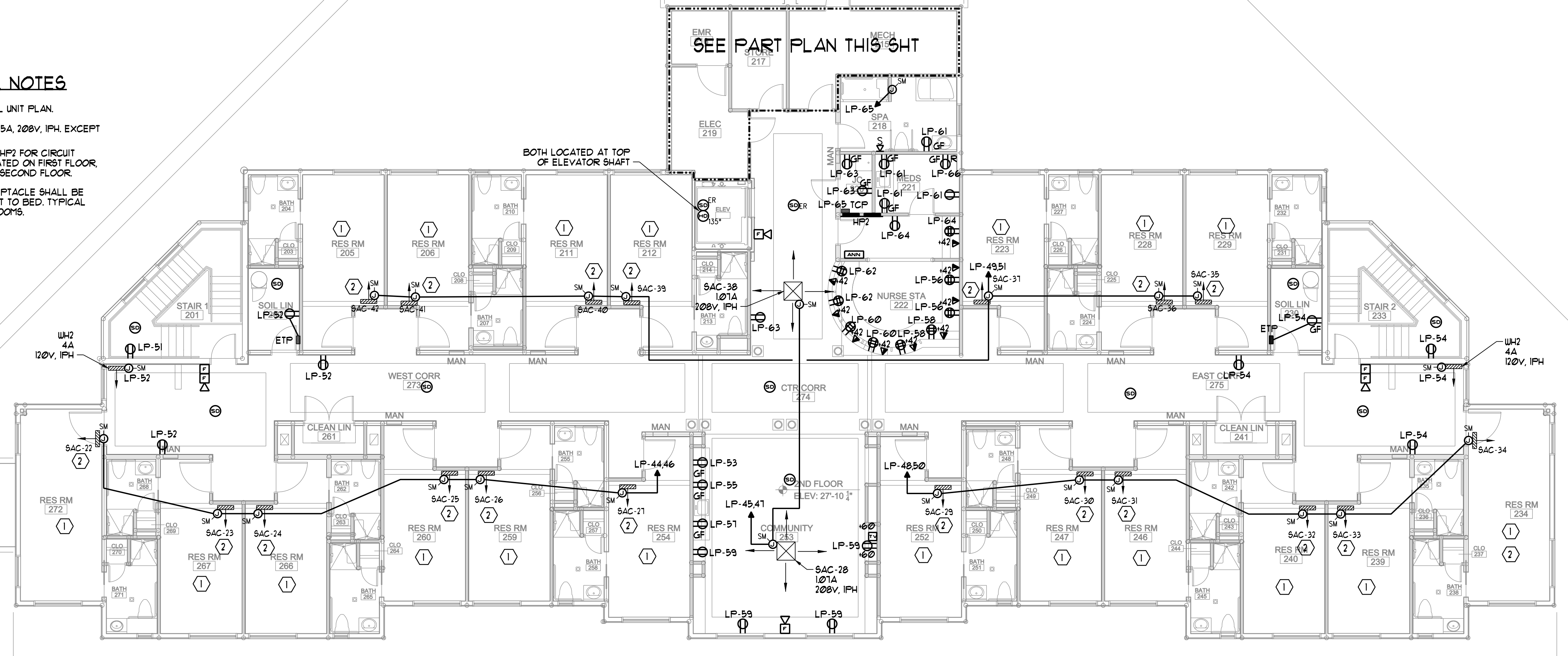
TYPICAL UNIT POWER PLANS  
 SCALE - 1/4"=1'-0"



PARTIAL PLAN  
 SCALE - 1/4"=1'-0"

ELECTRICAL NOTES

- 1 REFER TO TYPICAL UNIT PLAN.
- 2 ALL SAC'S ARE @15A, 200V, IPH, EXCEPT AS NOTE IN PLANS
- 3 REFER TO HPI OR HP2 FOR CIRCUIT NUMBER, HPI LOCATED ON FIRST FLOOR, HP2 LOCATED ON SECOND FLOOR.
- 4 EMERGENCY RECEPTACLE SHALL BE LOCATED CLOSEST TO BED, TYPICAL ALL RESIDENTS ROOMS.



BOTH LOCATED AT TOP OF ELEVATOR SHAFT

SEE PART PLAN THIS SHEET

SECOND FLOOR  
 ELEV: 27'-10"