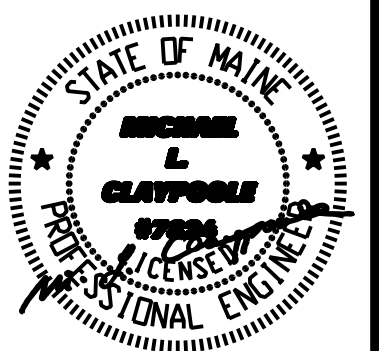
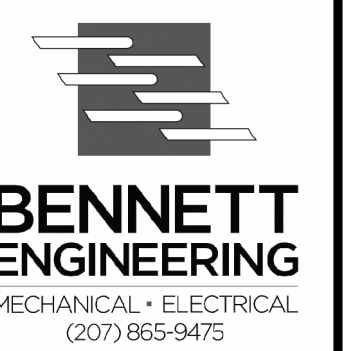


**GENERAL NOTES:**

**REVISIONS:**



5 Fundy Road Phone: 207-781-3344  
 Falmouth, Maine 04105 Fax: 207-699-5564  
 Online @ foresidearchitects.com

Project Status:  
 Bid Set

Project Number:  
 SR0712

Project Title:  
 Seaside Rehab & Healthcare Center  
 850 Baxter Blvd  
 Portland, ME

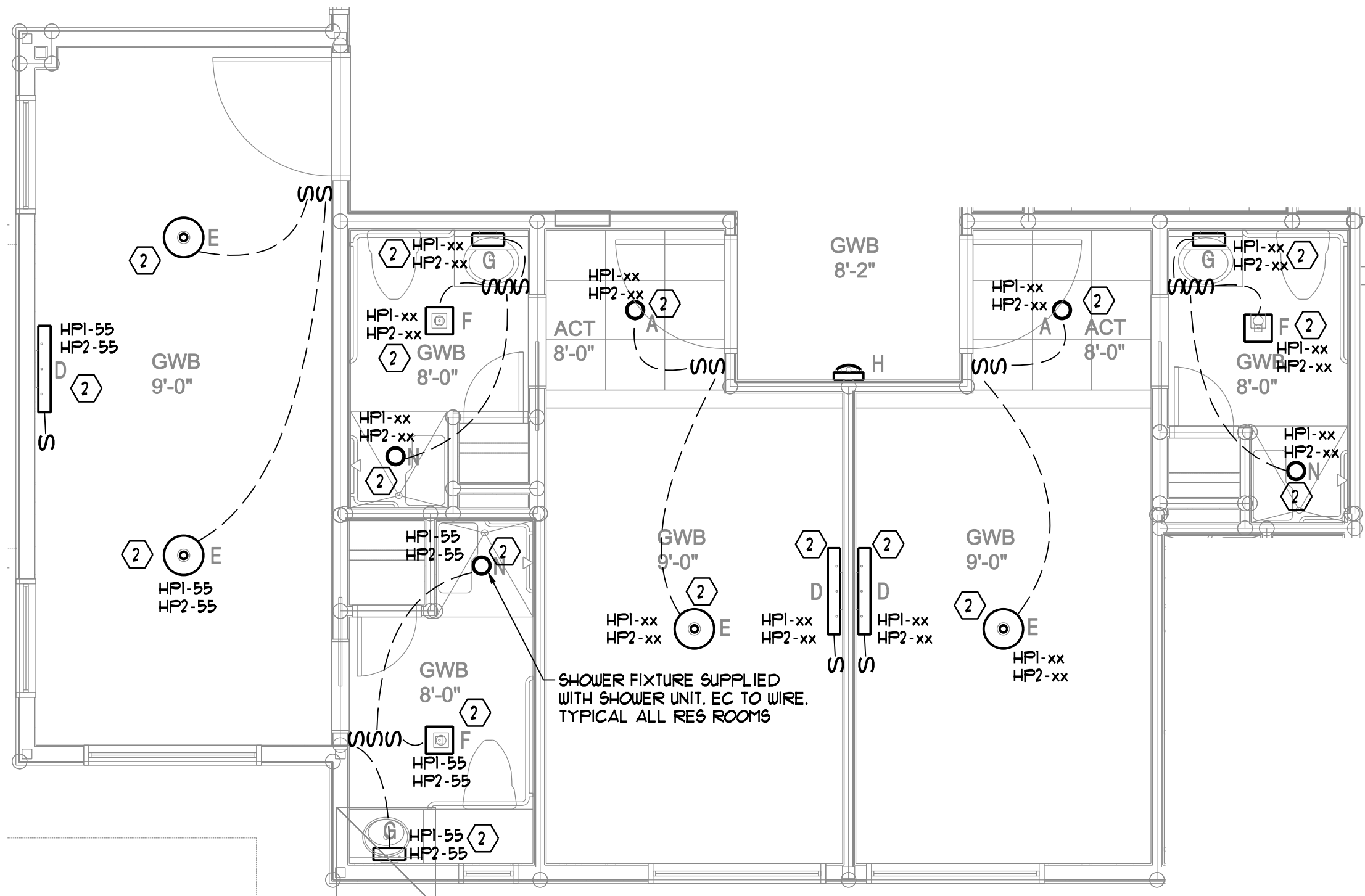
Drawing Name:  
 FIRST FLOOR LIGHTING PLAN

Scale:  
 1/8"=1'-0"

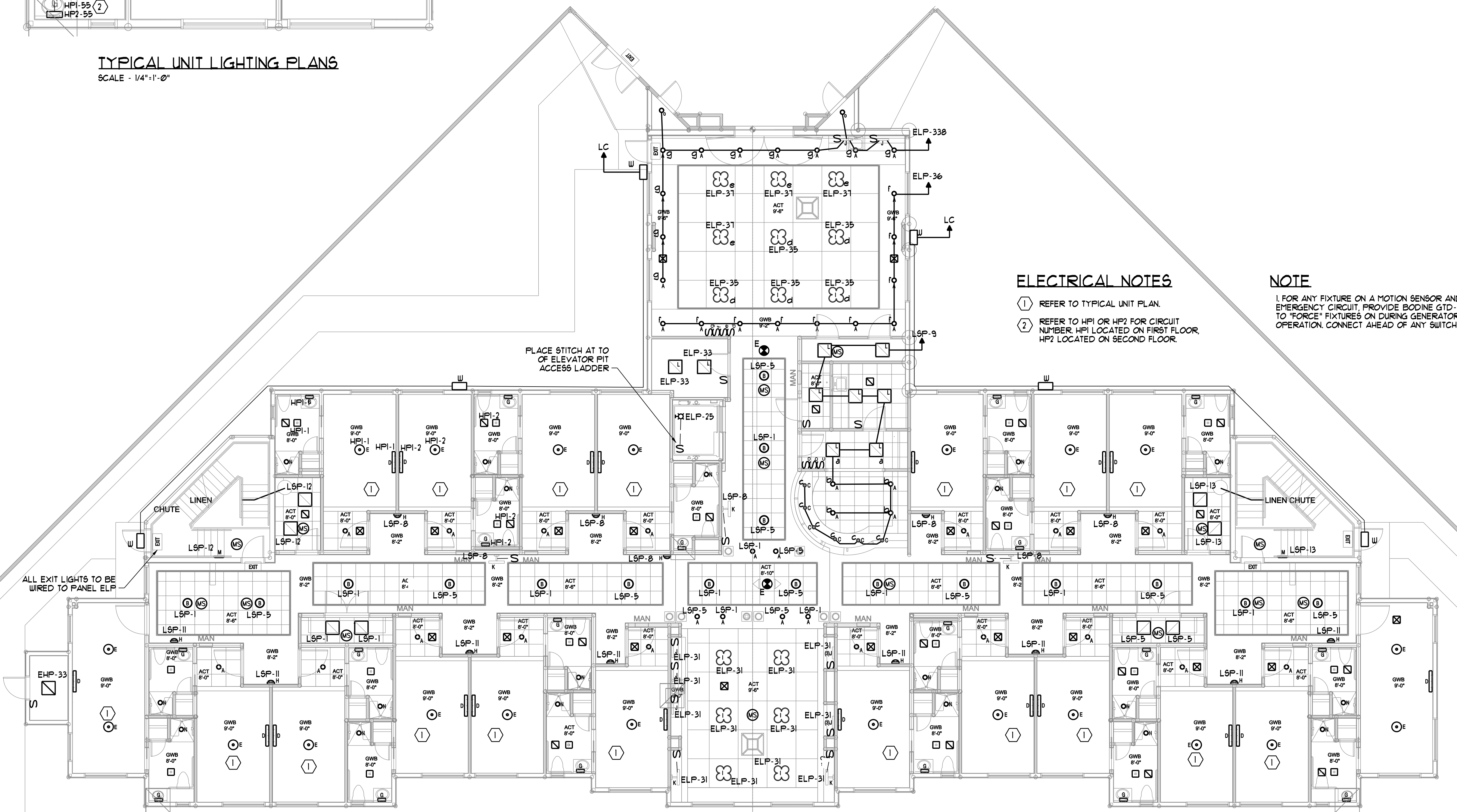
Date:  
 10/29/12

SHEET

**E-2**



**TYPICAL UNIT LIGHTING PLANS**  
 SCALE - 1/4"=1'-0"



**ELECTRICAL NOTES**

- ① REFER TO TYPICAL UNIT PLAN.
- ② REFER TO HPI OR HP2 FOR CIRCUIT NUMBER HPI LOCATED ON FIRST FLOOR, HP2 LOCATED ON SECOND FLOOR.

**NOTE**

I. FOR ANY FIXTURE ON A MOTION SENSOR AND AN EMERGENCY CIRCUIT, PROVIDE BODINE GTD-20 RELAY TO "FORCE" FIXTURES ON DURING GENERATOR OPERATION. CONNECT AHEAD OF ANY SWITCHING.