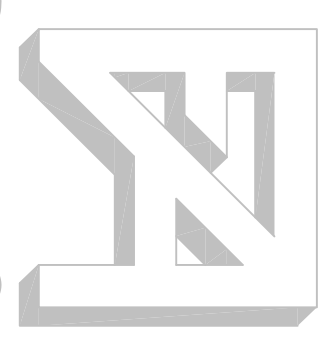




Copyright Reserved  
 The Contractor shall verify and be responsible for all dimensions, DO NOT scale the drawing - any errors or omissions shall be reported to the Designer. The Designer shall be responsible for the accuracy of the drawing. The Designer shall be responsible for the accuracy of the drawing. The Designer shall be responsible for the accuracy of the drawing.



**FORESIDE ARCHITECTS**  
 LLC

57 DUNDY ROAD  
 FALMOUTH, ME 04105  
 Phone: 207-781-3344  
 Fax: 207-699-5644  
 Website: foresidearchitects.com

Legend

- Notes
1. THE CITY OF PORTLAND AND FIRST ATLANTIC HEALTHCARE ARE REVIEWING ISSUES RELATED TO THE EXISTING DRIVEWAY AND SIGNAGE EASEMENT / LICENSE FOR THE BAXTER BOULEVARD DRIVEWAY. A FINAL OF THE DESIGN OF STREETS, SIGNALS, AND SIGNAGE SHALL PROVIDE FOR THE DRIVEWAY CONTRIBUTION. NEW SIGNAGE, ACCESS AND SIGNAGE OR AS OTHERWISE MAY BE REQUIRED.
  2. THE LAYOUT OF THE PROPOSED COURTYARD IS CONCEPTUAL. WALK ALIGNMENTS MAY BE ADJUSTED TO REFLECT EXISTING PLANTS, SHED LOCATIONS AND PROPOSED PLANTINGS.
  3. ADJUST GRADES AND ALIGNMENTS TO MEET EXISTING SITE CONDITIONS.

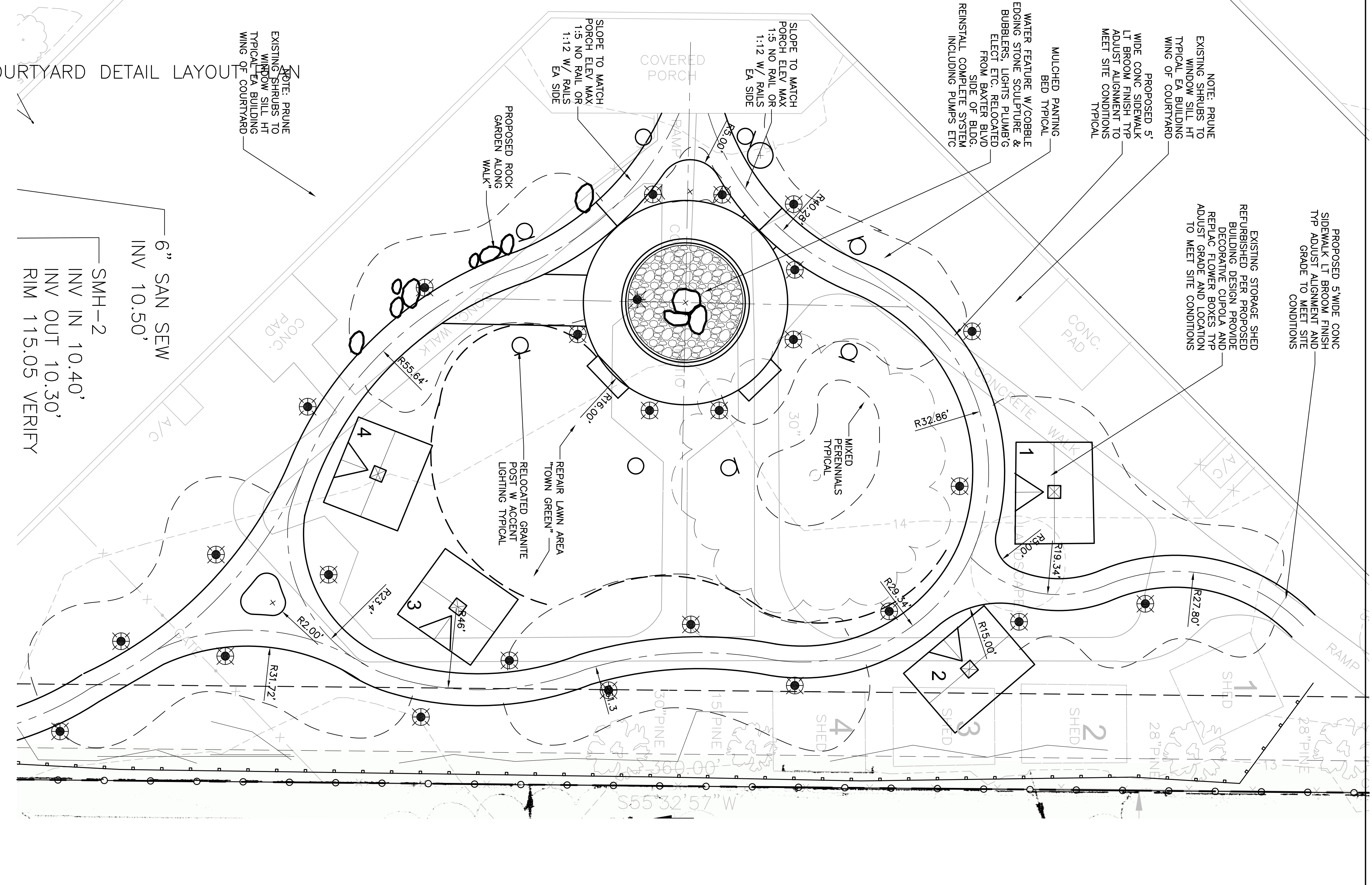
| Revision | By      | Appd. | TY:MM:DD |
|----------|---------|-------|----------|
| 1        | NE/R/JC |       | 12.10.29 |
| 2        | NE/R/JC |       | 12.10.17 |
| 3        | NE/R/JC |       | 12.09.04 |
| 4        | NE/R/JC |       | 12.07.17 |
| 5        | NE/R/JC |       | 12.06.22 |
| 6        | NE/R/JC |       | 12.06.22 |
| 7        | NE/R/JC |       | 12.06.22 |
| 8        | NE/R/JC |       | 12.06.22 |
| 9        | NE/R/JC |       | 12.06.22 |
| 10       | NE/R/JC |       | 12.06.22 |
| 11       | NE/R/JC |       | 12.06.22 |
| 12       | NE/R/JC |       | 12.06.22 |
| 13       | NE/R/JC |       | 12.06.22 |
| 14       | NE/R/JC |       | 12.06.22 |
| 15       | NE/R/JC |       | 12.06.22 |
| 16       | NE/R/JC |       | 12.06.22 |
| 17       | NE/R/JC |       | 12.06.22 |
| 18       | NE/R/JC |       | 12.06.22 |
| 19       | NE/R/JC |       | 12.06.22 |
| 20       | NE/R/JC |       | 12.06.22 |
| 21       | NE/R/JC |       | 12.06.22 |
| 22       | NE/R/JC |       | 12.06.22 |
| 23       | NE/R/JC |       | 12.06.22 |
| 24       | NE/R/JC |       | 12.06.22 |
| 25       | NE/R/JC |       | 12.06.22 |
| 26       | NE/R/JC |       | 12.06.22 |
| 27       | NE/R/JC |       | 12.06.22 |
| 28       | NE/R/JC |       | 12.06.22 |
| 29       | NE/R/JC |       | 12.06.22 |
| 30       | NE/R/JC |       | 12.06.22 |
| 31       | NE/R/JC |       | 12.06.22 |
| 32       | NE/R/JC |       | 12.06.22 |
| 33       | NE/R/JC |       | 12.06.22 |
| 34       | NE/R/JC |       | 12.06.22 |
| 35       | NE/R/JC |       | 12.06.22 |
| 36       | NE/R/JC |       | 12.06.22 |
| 37       | NE/R/JC |       | 12.06.22 |
| 38       | NE/R/JC |       | 12.06.22 |
| 39       | NE/R/JC |       | 12.06.22 |
| 40       | NE/R/JC |       | 12.06.22 |
| 41       | NE/R/JC |       | 12.06.22 |
| 42       | NE/R/JC |       | 12.06.22 |
| 43       | NE/R/JC |       | 12.06.22 |
| 44       | NE/R/JC |       | 12.06.22 |
| 45       | NE/R/JC |       | 12.06.22 |
| 46       | NE/R/JC |       | 12.06.22 |
| 47       | NE/R/JC |       | 12.06.22 |
| 48       | NE/R/JC |       | 12.06.22 |
| 49       | NE/R/JC |       | 12.06.22 |
| 50       | NE/R/JC |       | 12.06.22 |
| 51       | NE/R/JC |       | 12.06.22 |
| 52       | NE/R/JC |       | 12.06.22 |
| 53       | NE/R/JC |       | 12.06.22 |
| 54       | NE/R/JC |       | 12.06.22 |
| 55       | NE/R/JC |       | 12.06.22 |
| 56       | NE/R/JC |       | 12.06.22 |
| 57       | NE/R/JC |       | 12.06.22 |
| 58       | NE/R/JC |       | 12.06.22 |
| 59       | NE/R/JC |       | 12.06.22 |
| 60       | NE/R/JC |       | 12.06.22 |
| 61       | NE/R/JC |       | 12.06.22 |
| 62       | NE/R/JC |       | 12.06.22 |
| 63       | NE/R/JC |       | 12.06.22 |
| 64       | NE/R/JC |       | 12.06.22 |
| 65       | NE/R/JC |       | 12.06.22 |
| 66       | NE/R/JC |       | 12.06.22 |
| 67       | NE/R/JC |       | 12.06.22 |
| 68       | NE/R/JC |       | 12.06.22 |
| 69       | NE/R/JC |       | 12.06.22 |
| 70       | NE/R/JC |       | 12.06.22 |
| 71       | NE/R/JC |       | 12.06.22 |
| 72       | NE/R/JC |       | 12.06.22 |
| 73       | NE/R/JC |       | 12.06.22 |
| 74       | NE/R/JC |       | 12.06.22 |
| 75       | NE/R/JC |       | 12.06.22 |
| 76       | NE/R/JC |       | 12.06.22 |
| 77       | NE/R/JC |       | 12.06.22 |
| 78       | NE/R/JC |       | 12.06.22 |
| 79       | NE/R/JC |       | 12.06.22 |
| 80       | NE/R/JC |       | 12.06.22 |
| 81       | NE/R/JC |       | 12.06.22 |
| 82       | NE/R/JC |       | 12.06.22 |
| 83       | NE/R/JC |       | 12.06.22 |
| 84       | NE/R/JC |       | 12.06.22 |
| 85       | NE/R/JC |       | 12.06.22 |
| 86       | NE/R/JC |       | 12.06.22 |
| 87       | NE/R/JC |       | 12.06.22 |
| 88       | NE/R/JC |       | 12.06.22 |
| 89       | NE/R/JC |       | 12.06.22 |
| 90       | NE/R/JC |       | 12.06.22 |
| 91       | NE/R/JC |       | 12.06.22 |
| 92       | NE/R/JC |       | 12.06.22 |
| 93       | NE/R/JC |       | 12.06.22 |
| 94       | NE/R/JC |       | 12.06.22 |
| 95       | NE/R/JC |       | 12.06.22 |
| 96       | NE/R/JC |       | 12.06.22 |
| 97       | NE/R/JC |       | 12.06.22 |
| 98       | NE/R/JC |       | 12.06.22 |
| 99       | NE/R/JC |       | 12.06.22 |
| 100      | NE/R/JC |       | 12.06.22 |

File Name: 318080876\_Schedule  
 Permit Seal  
 Thomas N. Jenkins  
 Registered Landscape Architect  
 No. 1010  
 State of Maine  
 Patrick Clark  
 No. 8710  
 State of Maine

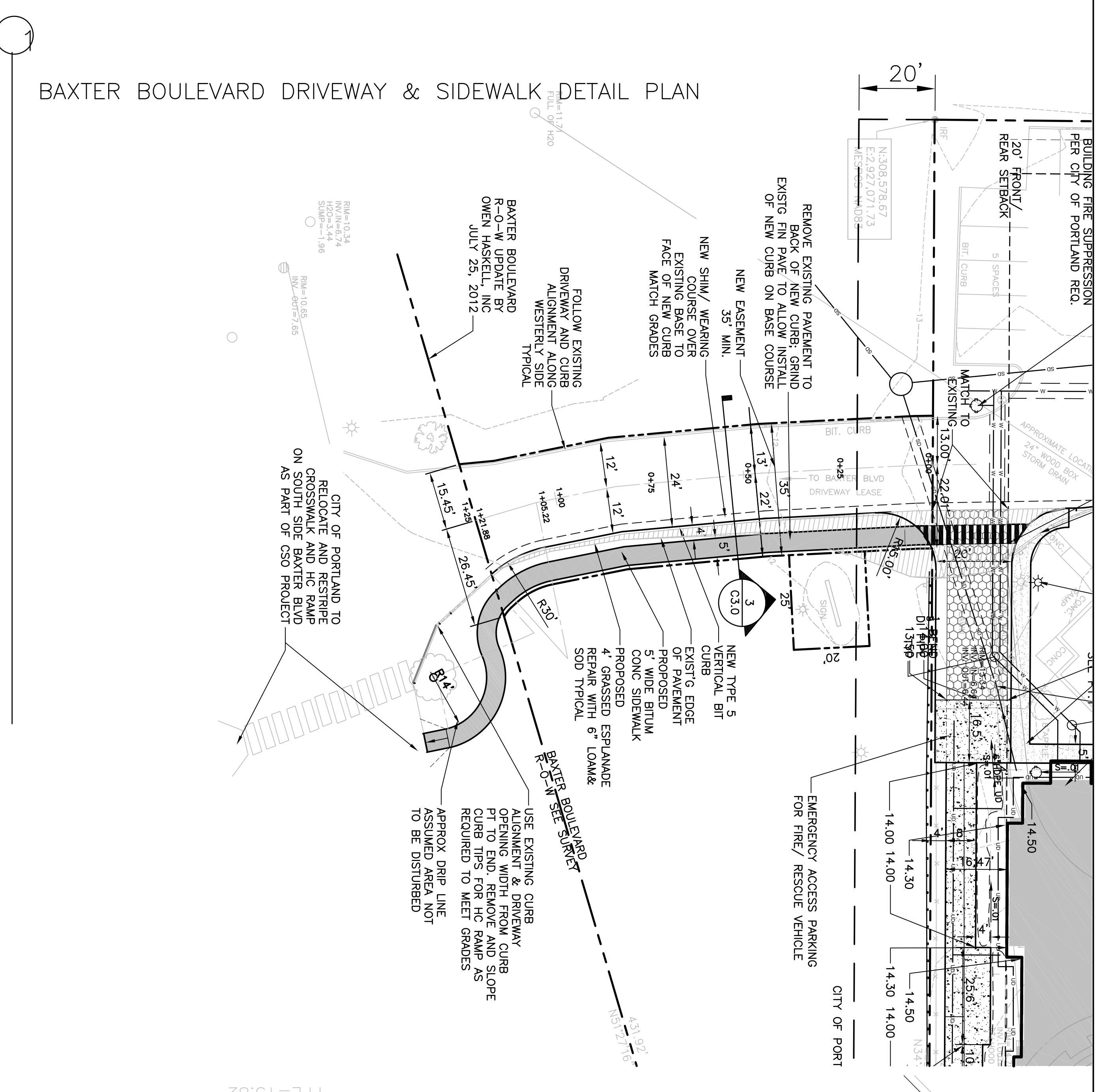
Client/Project  
**FIRST ATLANTIC HEALTHCARE**  
 SOUTH PORTLAND, ME 04106  
**SEASIDE REHABILITATION CENTER**  
 ADDITION & RENOVATIONS  
 850 BAXTER BLVD PORTLAND, MAINE

Title  
**DETAIL LAYOUT PLAN**  
**DRIVEWAY, SIDEWALK & COURTYARD**

Project No. 210800876  
 Scale AS NOTED  
 Drawing No. Sheet X of 0  
 Revision



**BAXTER BOULEVARD DRIVEWAY & SIDEWALK DETAIL PLAN**



**PLANT LIST REF DWG C-5**

| KEY #  | BOTANICAL NAME               | COMMON NAME                           | SIZE       | METHOD |
|--------|------------------------------|---------------------------------------|------------|--------|
| TREES  |                              |                                       |            |        |
| AR     | ACER RIPARIUM "OCTOBER GLIM" | RED MAPLE                             | 2-2.5" CAL | B&B    |
| BG     | BETULA GRACILIS              | WEeping W. BIRCH                      | 1-1.5" CAL | B&B    |
| CK     | CORNUS KOUSA                 | KOREAN DOGWOOD                        | 1-1.5" CAL | B&B    |
| SR     | SORBUS RETICULATA            | TESQNY TREE LILAC                     | 1-1.5" CAL | B&B    |
| TO     | TRILIUM OCCIDENTALE TECHN    | TESQNY FARRINGTON                     | 3-5 HI     | B&B    |
| TC     | TSUGA C. SIBIROENSIS         | WEeping HEMLOCK                       | 3 HI       | B&B    |
| SHRUBS |                              |                                       |            |        |
| SV     | SPARGANGLIUM                 | COMMON LILAC (MIXED COLORS)           | 3-4" HI    | B&B    |
| JH     | JUNIPERUS CHINENSIS          | SEA GREEN JUNIPER                     | 18-24" SP  | CONT.  |
| RA     | RHODO. CATAPAWBA ALBA        | RHODO. CATAPAWBA                      | 2.5-3" HI  | CONT.  |
| RC     | RHODO. CAROLINIANA           | RHODO. CAROLINIANA                    | 2.5-3" HI  | CONT.  |
| PH     | PHODOPHYLLON                 | RED BARK DOGWOOD                      | 2.5-3" HI  | CONT.  |
| HM     | HEDERA HELIX                 | ENGLISH IVY (WHEN CONTAINED AREAS)    | 2.5-3" HI  | CONT.  |
| WPKD   | WIKSTRANDIA                  | DIMESS SUMMER HYDRANGEA               | 2.5-3" HI  | CONT.  |
| DIR    | DIRTIA (MIXED COLORS)        |                                       |            |        |
| AS     | ASTILBE (MIXED COLORS)       |                                       |            |        |
| SH     | SHASTIA DASY                 | HEATHER - MIXED COLORS W/ ROCK GARDEN |            |        |
| SE     | SEDIUM                       | SEDUMS - MIXED COLORS W/ ROCK GARDEN  |            |        |
| GC     | GROUND COVER                 |                                       |            |        |
| VN     | VINCA MINOR                  | PERIWINKLE                            |            |        |
| HE     | HEBERA HELIX                 | ENGLISH IVY (WHEN CONTAINED AREAS)    |            |        |

