

GENERAL NOTES:

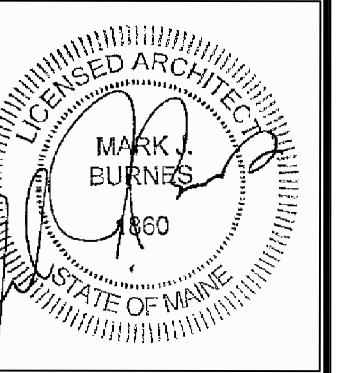
- FINISH KEY**
- CG JOHNSONITE CORNER GUARD
 - F1 VCT
 - F2 CARPET
 - F3 VINYL PLANK
12103 BOARDER
12105 FIELD
 - F4 MOSAIC TILE
 - F5 SEALED CONC
 - S1 ELEVATOR SIGN
 - S2 EXIT SIGN
 - S3 RESTROOM SIGN
 - S4 ROOM SIGN
 - S5 STAIR SIGN

REVISIONS:



PO BOX 66736 Phone: 207-781-3344
 FALMOUTH, ME 04105
 Online @ foresidearchitects.com

Project Status:
 BID SET
 NOT FOR
 CONSTRUCTION



Project Number:
 SR0712

Seaside Rehabilitation
 and Health Care Center
 850 Baxter Blvd
 Portland, ME

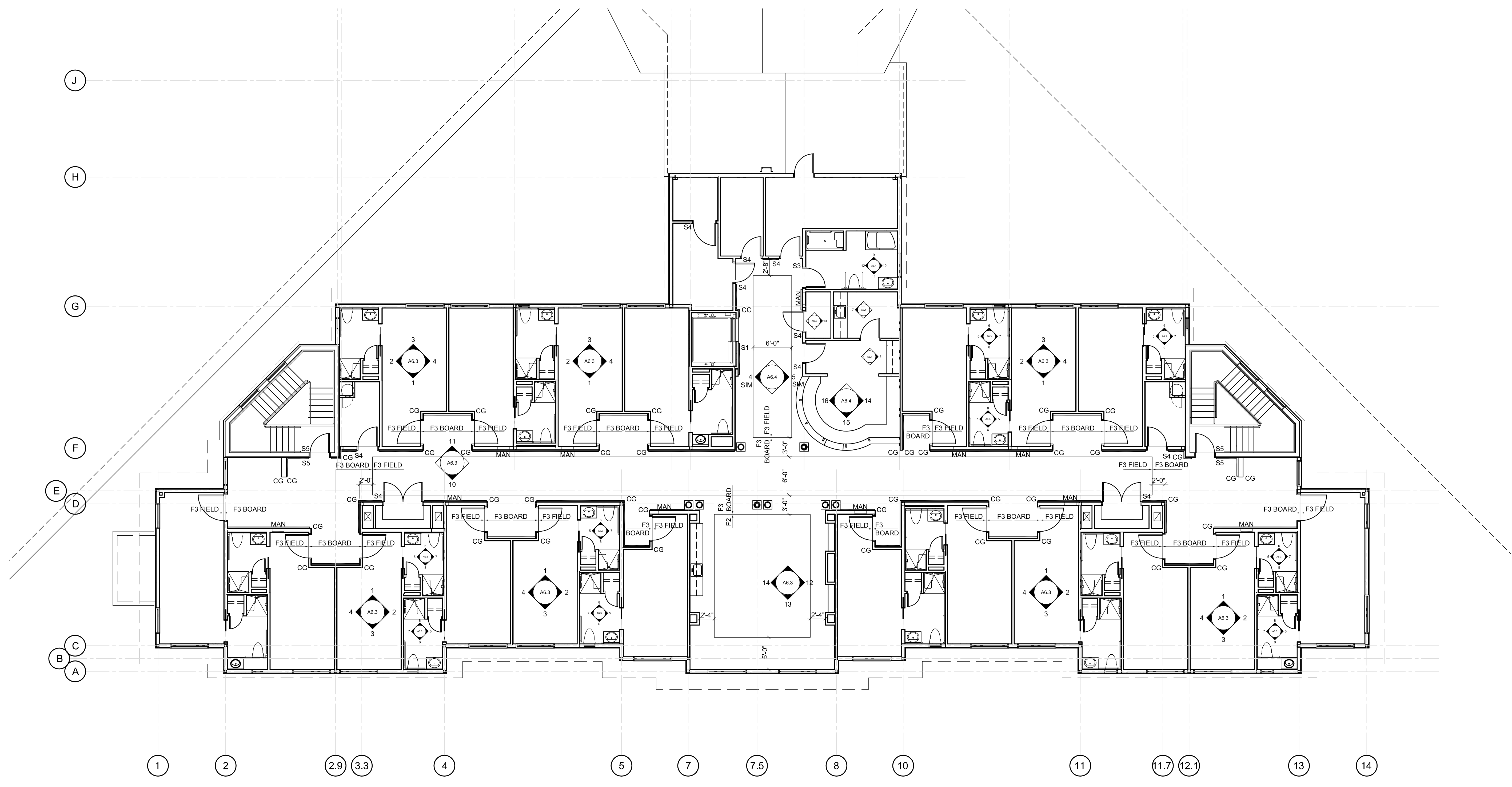
Drawing Name:
 SECOND FLOOR INTERIORS PLAN

Scale:
 $\frac{1}{8}" = 1'-0"$

SHEET

Date:
 10/29/12

A6.2



1 SECOND FLOOR INTERIORS PLAN
 SCALE: 1/8" = 1'-0"