

EXTERIOR SIDING, REFER TO BUILDING ELEVATIONS FOR TYPE AND LOCATIONS, TYPICAL
CONT. PREFINISHED METAL FLASHING, EXTEND FROM DRIP TO 8" VERTICALLY FROM WATERTABLE TYP.

ROOF LADDER, TYP.
5/4 X 6 CONTINUOUS TRIM, TYP.
SPRAYED-ON CLOSED CELL FOAM INSULATION AT STEEL FRAME, TYP.

(2) 2 X 8 BLOCKING BOLTED TO LIGHT GAGE METAL FRAMING FOR ATTACHMENT OF ROOF LADDER, TYP.

WATERPROOFED FLASH'G AT ROOF ACCESS LADDER / WALL CONNECTION, TYPICAL
TPO MEMBRANE ROOFING, EXTEND 36" VERT. ON ADJACENT WALL SURFACE, TYP.

5/8" DENS GLASS TYPE "X" EXT. WALL SHEATHING WITH FLUID APPLIED WATERPROOF WEATHER BARRIER, TYP
CONTINUOUS 1" RIGID INSULATION, TYP.
6" GALVANIZED METAL STUDS @ 16" OC , TYP.
CONCRETE SLAB AND METAL DECK, REFER TO STRUCTURAL DRAWINGS, TYPICAL

IN-SLAB RADIANT HEATING COILS, REFER TO MECHANICAL DRAWINGS FOR LOCATION AND QUANTITIES, TYPICAL

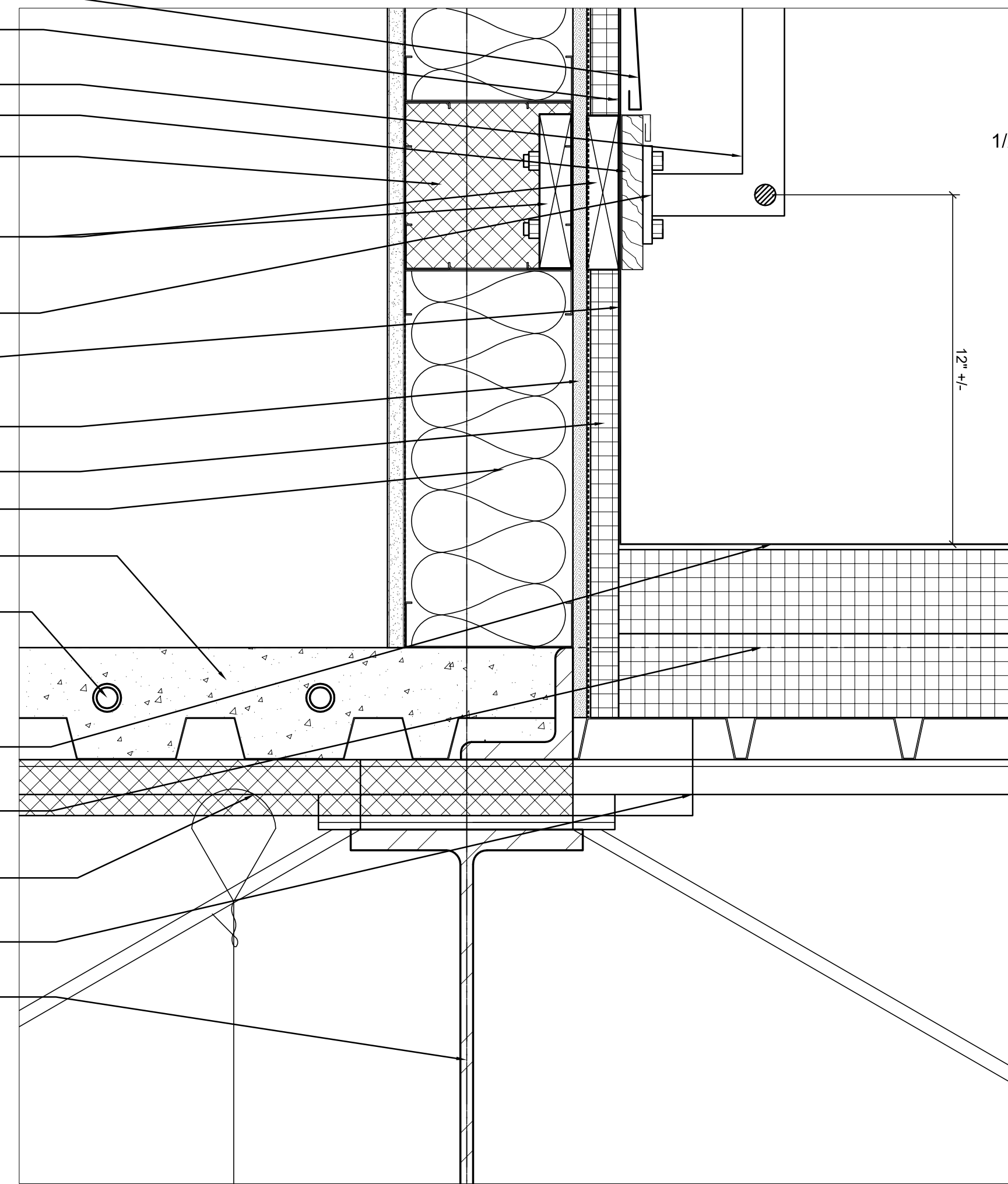
TPO MEMBRANE ROOFING, TYPICAL

(2) LAYERS 3" TAPERED RIGID INSULATION (MIN. R-38), TAPED AT SEAMS AND PERIMETER., TYPICAL

SPRAYED-ON CLOSED CELL FOAM INSULATION AT UNDERSIDE OF METAL DECK (R-10) AND STEEL FRAME, TYP.

STEEL BAR JOISTS, REFER TO STRUCT. DWGS., TYPICAL

STEEL FRAME, REFER TO STRUCT. DWGS., TYPICAL



1 TYP EXT WALL/MEMBRANE ROOF/ LADDER
SCALE: 3" = 1'-0"

8" NOMINAL REINFORCED CMU WALL, REFER TO STRUCT. DWGS., TYPICAL

1/2" APA FIRE-TREATED PLYWOOD EXTERIOR WALL SHEATHING WITH CONT. APPLIED WEATHER BARRIER FINISH, TYP.

LIMIT OF EXISTING STRUCTURE TYPICAL

TPO MEMBRANE FLASHING, EXTEND 36" VERT. @ EXTERIOR WALL PERIMETER, TYPICAL

TPO ROOF MEMBRANE, TYPICAL

TPO MEMBRANE ROOFING, TYPICAL

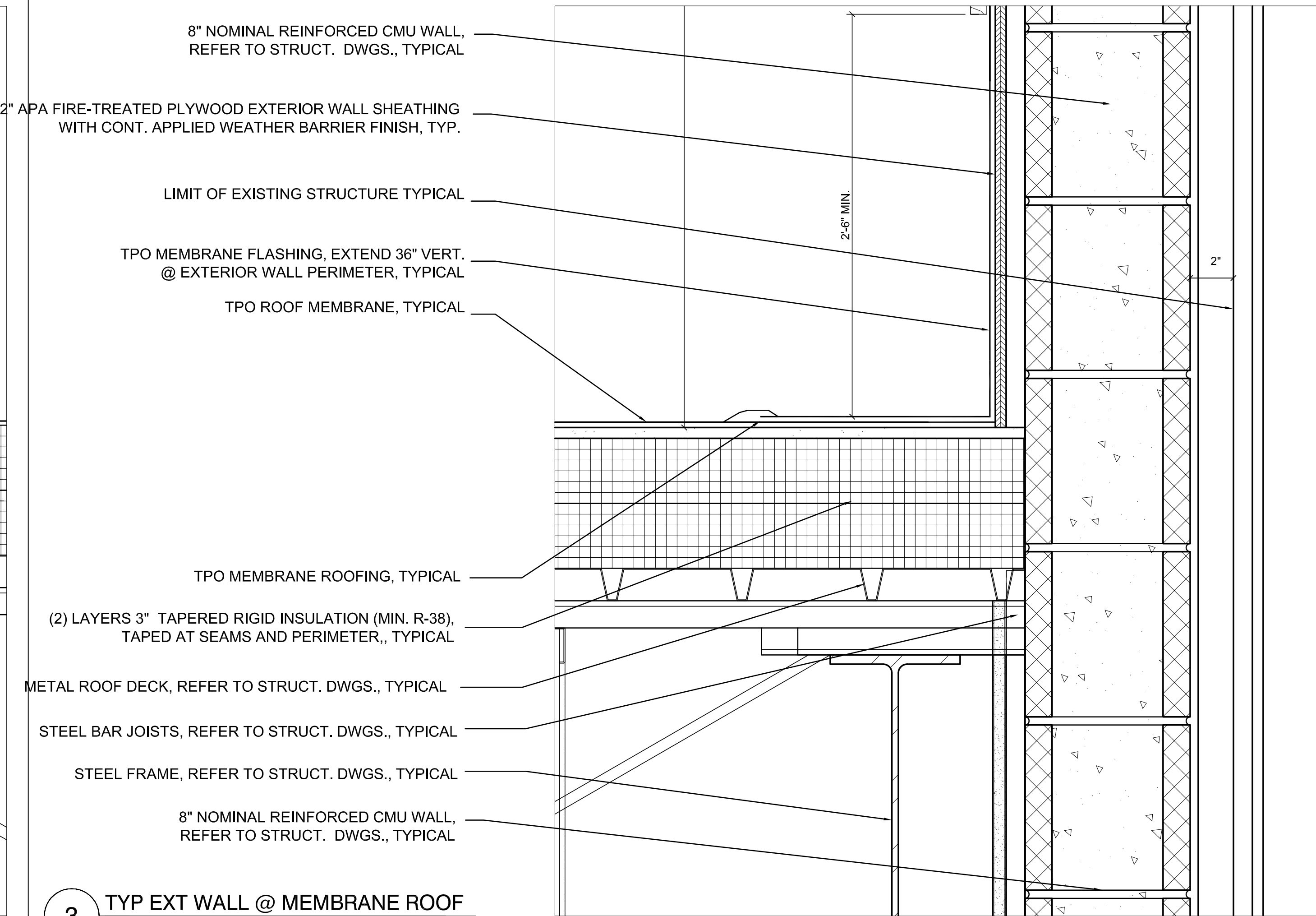
(2) LAYERS 3" TAPERED RIGID INSULATION (MIN. R-38), TAPED AT SEAMS AND PERIMETER., TYPICAL

METAL ROOF DECK, REFER TO STRUCT. DWGS., TYPICAL

STEEL BAR JOISTS, REFER TO STRUCT. DWGS., TYPICAL

STEEL FRAME, REFER TO STRUCT. DWGS., TYPICAL

8" NOMINAL REINFORCED CMU WALL, REFER TO STRUCT. DWGS., TYPICAL



3 TYP EXT WALL @ MEMBRANE ROOF
SCALE: 3" = 1'-0"

(2) LAYERS 3" TAPERED RIGID INSULATION (MIN. R-38), TAPED AT SEAMS AND PERIMETER., TYPICAL

TPO MEMBRANE ROOF FLASHING, EXTEND FROM METAL FASCIA EDGE AT WALL PERIMETER TO ROOF SURFACE, TYPICAL

TPO MEMBRANE ROOFING CONTINUOUS, EXTEND VERTICALLY DOWN FACE OF EXTERIOR WALL, TYPICAL

1 X 5 AND 2 X 10 WOOD BLOCKING, TYPICAL
2 X 8 LOOKOUT RAFTERS HUNG OFF LEDGER WITH JOIST HANGERS, TYPICAL

(2) 2 X 8 LEDGER BOLTED TO 6 X 3.5, ANGLE @ 36" OC, WELDED TO STEEL FRAME TYPICAL

CONTINUOUS PRE-FINISHED AND PRE-FABRICATED VENTED SOFFIT MATERIAL, TYP.
CONTINUOUS 1X4 SOLID VINYL SOFFIT CLOSURE TRIM, PTD, TYP.
METAL ROOF DECK, REFER TO STRUCT. DWGS., TYPICAL
STEEL FRAME, REFER TO STRUCT. DWGS., TYPICAL
SPRAYED-ON CLOSED CELL FOAM INSULATION AT STEEL FRAME, TYP.

CONT. 5/4 X 6 SOLID VINYL SOFFIT CLOSURE TRIM WITH DADO CUT TO CONCEAL VINYL "J" CHANNEL, PTD, TYP.

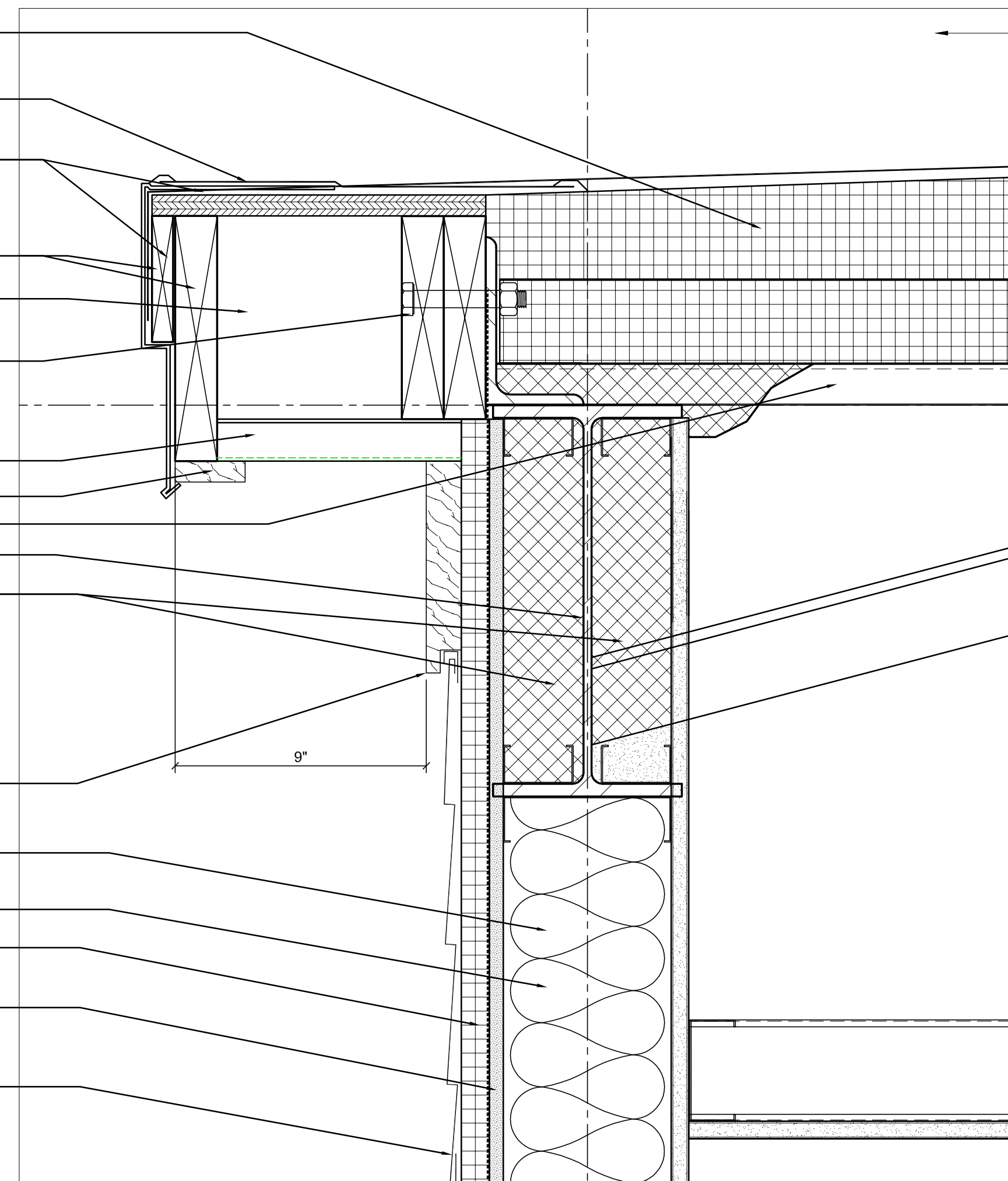
CONT. R-19 BATT INSULATION, TYP.

6" GALVANIZED METAL STUDS @ 16" OC , TYP.

CONTINUOUS 1" RIGID INSULATION, TYP.

5/8" DENS GLASS TYPE "X" EXT. WALL SHEATHING WITH FLUID APPLIED WATERPROOF WEATHER BARRIER, TYP

EXTERIOR SIDING, REFER TO BUILDING ELEVATIONS FOR TYPE AND LOCATIONS, TYPICAL



2 TYP EXTERIOR WALL BASE @ STAIRS
SCALE: 3" = 1'-0"

COMPOSITE ASPHALT SHINGLE ROOF BEYOND, TYPICAL
PREFINISHED METAL FASCIA / DRIP EDGE CAP AND FASTEN AT SLOPE RIDGE AND UNDERLAY ROOF SHINGLES AT EAVE CONDITION ADJACENT. RAKE (SIM. AND NOT SHOWN), TYPICAL
2 X 6 BLOCKING CONT., TYPICAL

COMPOSITE ASPHALT ROOF SHINGLES, TYPICAL
CONT. 5/4 X 6 SOLID VINYL SOFFIT CLOSURE TRIM WITH DADO CUT TO CONCEAL VINYL "J" CHANNEL, PTD, TYP.
HIGH PERFORMANCE WATER AND WEATHER-PROOF ROOF UNDERLAYMENT, CONTINUOUS , TYPICAL
3/4" FIRE-RETARDANT, APA RATED, ROOF SHEATHING, CONTINUOUS , REFER TO STRUCTURAL DWGS., TYPICAL
PREFABRICATED STEEL ROOF TRUSSES , REFER TO STRUCTURAL DWGS., TYPICAL

EXTERIOR SIDING, REFER TO BUILDING ELEVATIONS FOR TYPE AND LOCATIONS, TYPICAL

1/2" APA FIRE-TREATED PLYWOOD EXTERIOR WALL SHEATHING WITH CONT. APPLIED WEATHER BARRIER FINISH, TYP.

TPO MEMBRANE FLASHING, EXTEND VERT. OVER ROOF EDGE ABOVE @ EXTERIOR WALL PERIMETER, TYPICAL
CONT. PREFINISHED METAL FLASHING, EXTEND FROM DRIP TO 8" VERTICALLY FROM WATERTABLE TYP.

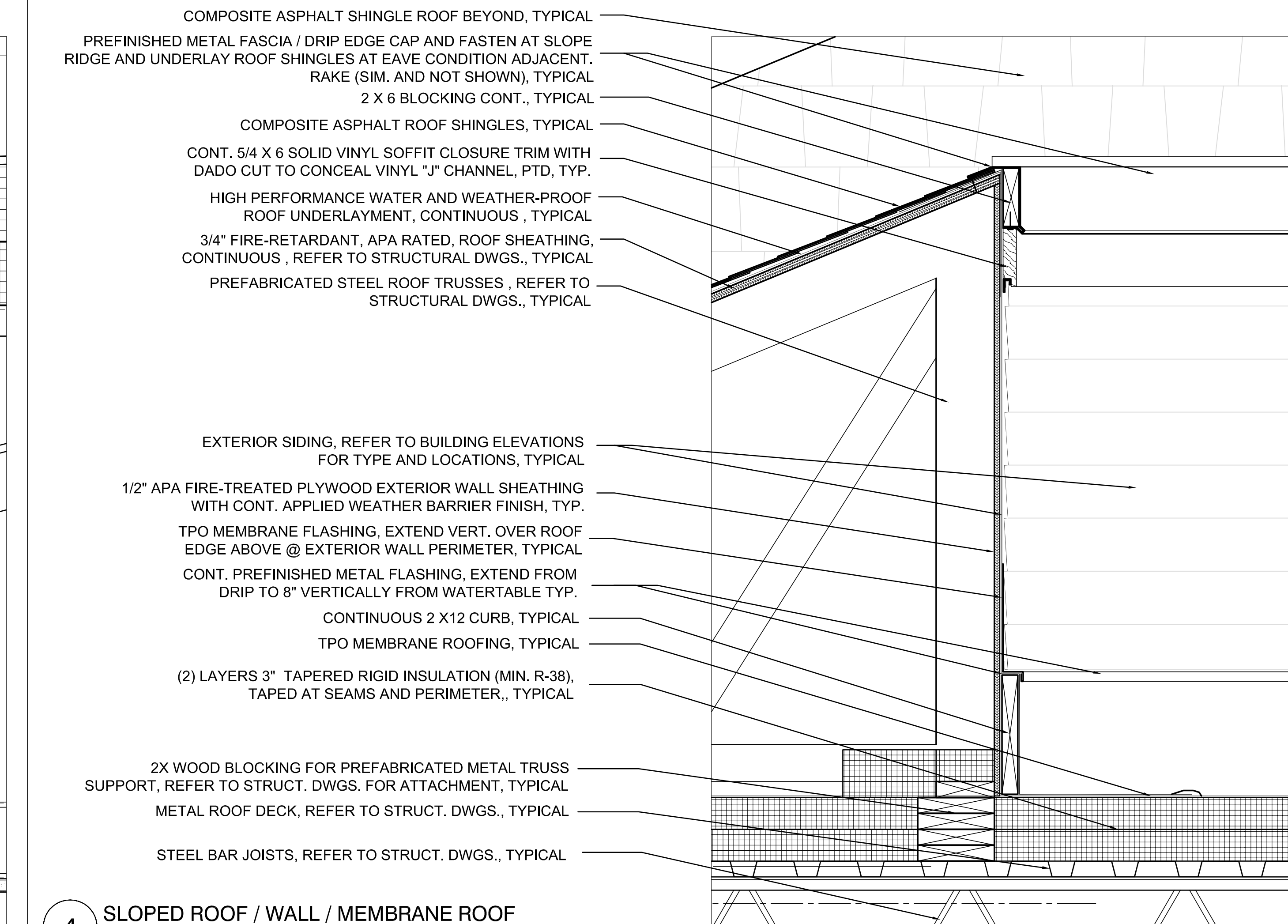
CONTINUOUS 2 X12 CURB, TYPICAL

TPO MEMBRANE ROOFING, TYPICAL

(2) LAYERS 3" TAPERED RIGID INSULATION (MIN. R-38), TAPED AT SEAMS AND PERIMETER., TYPICAL

2X WOOD BLOCKING FOR PREFABRICATED METAL TRUSS SUPPORT, REFER TO STRUCT. DWGS. FOR ATTACHMENT, TYPICAL
METAL ROOF DECK, REFER TO STRUCT. DWGS., TYPICAL

STEEL BAR JOISTS, REFER TO STRUCT. DWGS., TYPICAL



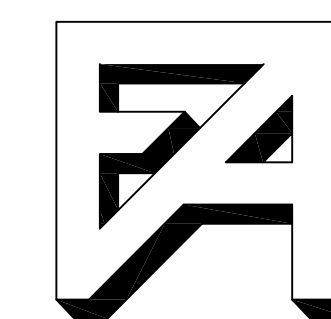
4 SLOPED ROOF / WALL / MEMBRANE ROOF
SCALE: 1-1/2" = 1'-0"

COPYRIGHT 2012
REUSE OR REPRODUCTION OF THE CONTENTS OF THIS DOCUMENT IS NOT PERMITTED WITHOUT WRITTEN PERMISSION OF FORESIDE ARCHITECTS

GENERAL NOTES:

1. REPORT ANY DISCREPANCIES TO THE ARCHITECT. CONTRACTOR SHALL PROCEED WITH WORK ONLY AFTER DISCREPANCIES HAVE BEEN RESOLVED BY THE ARCHITECT.
2. EXISTING BUILDING COMPONENTS WHICH ARE AFFECTED BY NEW WORK AND DEMOLITION, OR WHICH MAY BE DAMAGED BY THE CONTRACTOR OR ANY SUBCONTRACTOR, SHALL BE REPLACED OR RESTORED TO THE ORIGINAL CONDITION AND COLOR AS APPROVED BY THE ARCHITECT.
3. THE BUILDING SHALL BE CONSTRUCTED TO CONFORM WITH ALL GOVERNING CODES INCLUDING 2006 IBC, NFPA 101 2006, MAINE HUMAN RIGHTS COMMISSION GUIDELINES, STATE OF MAINE PLUMBING CODE, NEC 2005, AND ANSI.
4. ALL EXISTING CONDITIONS ARE TO BE FIELD VERIFIED BY THE CONTRACTOR PRIOR TO FABRICATION. THIS INCLUDES DELIVERY PROCEDURES, DIMENSIONS AND MATERIALS.
5. DRAWINGS ARE NOT TO BE SCALED. CONTRACTOR SHALL VERIFY DIMENSIONS AND CONDITIONS REQUIRING CLARIFICATION.
6. DEMOLITION REQUIRES SELECTIVE REMOVAL AND SUBSEQUENT OFF-SITE DISPOSAL OF THE FOLLOWING: REMOVAL OF ALL MATERIALS DISMANTLED NOT INTENDED FOR RE-USE, AND REMOVAL AND RECONNECTION, CAPPING, TERMINATION OR DISCONNECTION OF ALL WIRING , HEATING AND PLUMBING NOT USED IN THE NEW WORK.
7. THIS PROJECT SHALL NOT CONTAIN HAZARDOUS MATERIALS OF ANY OF PRODUCT, INCLUDING BUT NOT LIMITED TO ASBESTOS.
8. THE CONTRACTOR SHALL OBTAIN ALL REQUIRED PERMITS FROM THE APPROPRIATE OFFICIALS PRIOR TO COMMENCING THE WORK.
9. WHERE ONLY A SINGLE PRODUCT OR MANUFACTURER IS NAMED, PROVIDE THE PRODUCT INDICATED. SUBSTITUTIONS SHALL BE PERMITTED ONLY WHEN APPROVED BY THE OWNER OR THE OWNER'S AUTHORIZED REPRESENTATIVE THROUGH WRITTEN DIRECTIVE.
9. AT PROJECT CLOSEOUT, SUBMIT SPECIFIC WARRANTIES, WORKMANSHIP BONDS, MAINTENANCE AGREEMENTS, FINAL CERTIFICATIONS AND SIMILAR DOCUMENTS.
10. COMPLETE FINAL CLEANUP AT PROJECT CLOSEOUT. TOUCH-UP, REPAIR AND RESTORE MARKED EXPOSED FINISHES.
11. THE LOCATION OF ALL DOORFRAMES NOT DIMENSIONED SHALL BE 4" FROM ADJACENT WALLS UNLESS OTHERWISE INDICATED.
12. ALL PARTITIONS SHALL EXTEND FROM FLOOR TO UNDERSIDE OF SUPPORTING STRUCTURE ABOVE UNLESS OTHERWISE NOTED.
13. INSTALL BLOCKING BEHIND ALL SURFACE APPLIED FIXTURES, TRIM, GRAB BARS, SHELVES, CHAIR RAILS, PICTURE RAILS AND BASE MOLDINGS.

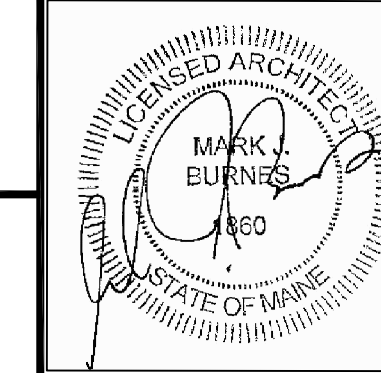
REVISIONS:



FORESIDE ARCHITECTS
LLC

PO BOX 66736 Phone: 207-781-3344
FALMOUTH, ME 04105
Online @ foresidearchitects.com

Project Status:
BID SET
NOT FOR
CONSTRUCTION



Project Number:
SR0712

Seaside Rehabilitation
and Health Care Center
850 Baxter Blvd
Portland, ME

Drawing Name:
SECTION DETAILS

Scale:
3" = 1'-0"

SHEET

Date:
10/29/12

A4.5