

TPO MEMBRANE ROOF FLASHING, EXTEND FROM METAL FASCIA EDGE AT WALL PERIMETER TO ROOF SURFACE, TYPICAL

(2) LAYERS 3" RIGID INSULATION (MIN. R-38), TAPED AT SEAMS AND PERIMETER, ASSEMBLY SHALL CONSTITUTE VAPOR BARRIER, TYPICAL

TPO MEMBRANE ROOFING, EXTEND 12" VERT. DOWN EXTERIOR WALL PERIMETER, TYPICAL

CONT. 1X5 AND 2X10 EDGE BLOCKING LAGGED W/ 3/8" X 8" LONG HOT-DIPPED GALVANIZED LAG BOLT TO (3) 2X10 ROOF EDGE BLOCKING ANCHORED TO CMU BELOW W/ 3/8" X 10" LONG FORMED ANCHOR BOLT @ 48" OC, TYP.

METAL DECKING, REFER TO STRUCTURAL DWGS., TYPICAL

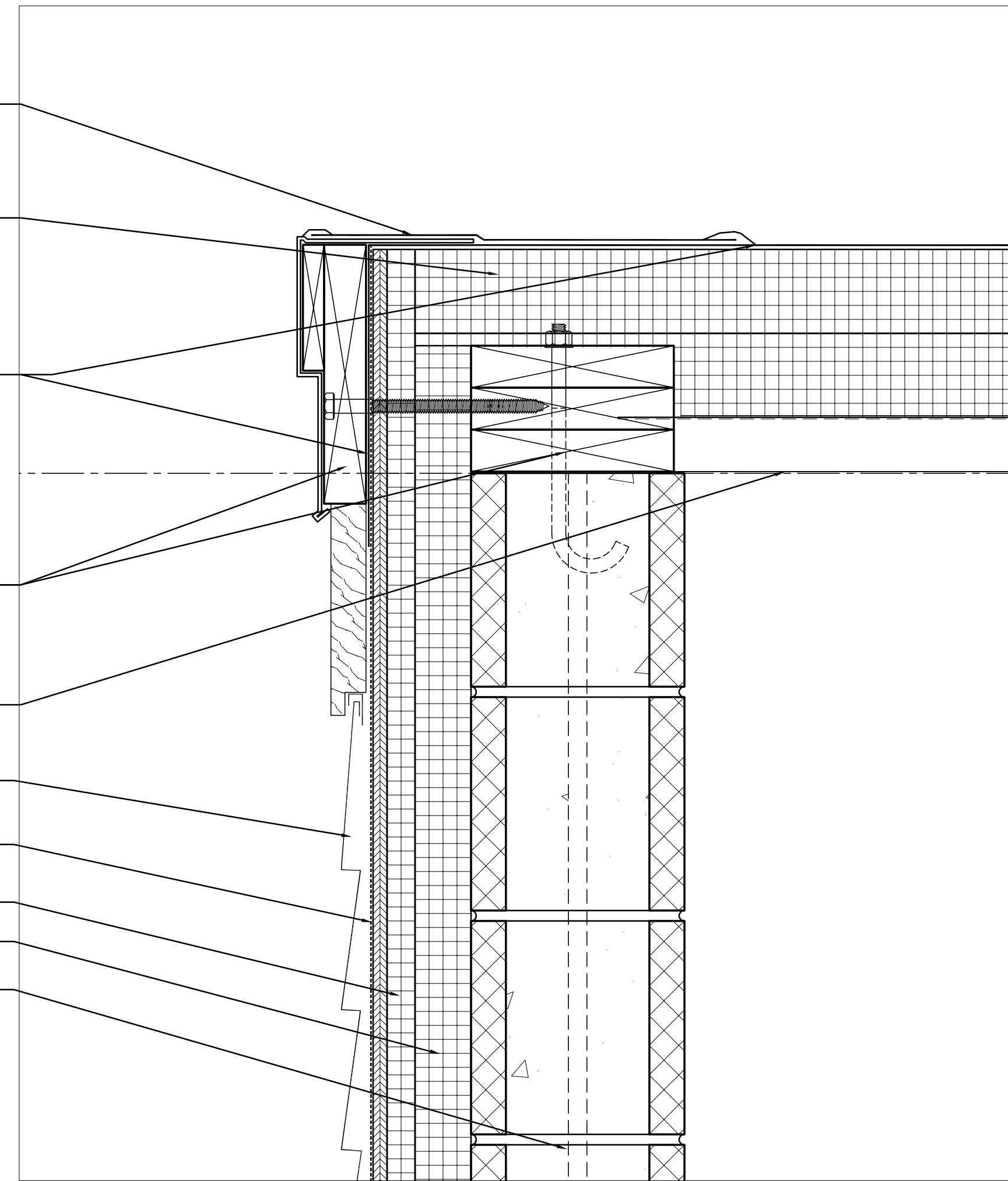
EXTERIOR SIDING, REFER TO BUILDING ELEVATIONS FOR TYPE AND LOCATIONS, TYPICAL

1/2" APA FIRE-TREATED PLYWOOD EXTERIOR WALL SHEATHING WITH CONT. APPLIED WEATHER BARRIER FINISH, TYP.

CONTINUOUS 1" RIGID INSULATION OVER "Z" FURRING, TYP.

2" RIGID INSULATION W/ 2" "Z" FURRING AT 24" OC, TYP.

8" NOMINAL REINFORCED CMU WALL, BLOCK FILLER AND PAINTED INTERIOR FACE, REFER TO STRUCTURAL DWGS., TYPICAL



1 TYP EXT. WALL / ROOFING EDGE @ STAIRS
SCALE: 3" = 1'-0"

TPO MEMBRANE ROOF FLASHING, EXTEND FROM METAL FASCIA EDGE AT WALL PERIMETER TO ROOF SURFACE, TYPICAL

(2) LAYERS 3" RIGID INSULATION (MIN. R-38), TAPED AT SEAMS AND PERIMETER, ASSEMBLY SHALL CONSTITUTE VAPOR BARRIER, TYPICAL

TPO MEMBRANE ROOFING, EXTEND 12" VERT. DOWN EXTERIOR WALL PERIMETER, TYPICAL

CONT. 1X5 AND 2X10 EDGE BLOCKING LAGGED W/ 3/8" X 8" LONG HOT-DIPPED GALVANIZED LAG BOLT TO (3) 2X10 ROOF EDGE BLOCKING ANCHORED TO CMU BELOW W/ 3/8" X 10" LONG FORMED ANCHOR BOLT @ 48" OC, TYP.

METAL DECKING, REFER TO STRUCTURAL DWGS., TYPICAL

METAL BAR JOISTS, REFER TO STRUCT. DWGS., TYPICAL

SPRAYED-ON CLOSED CELL FOAM INSULATION AT STEEL FRAME, TYP.

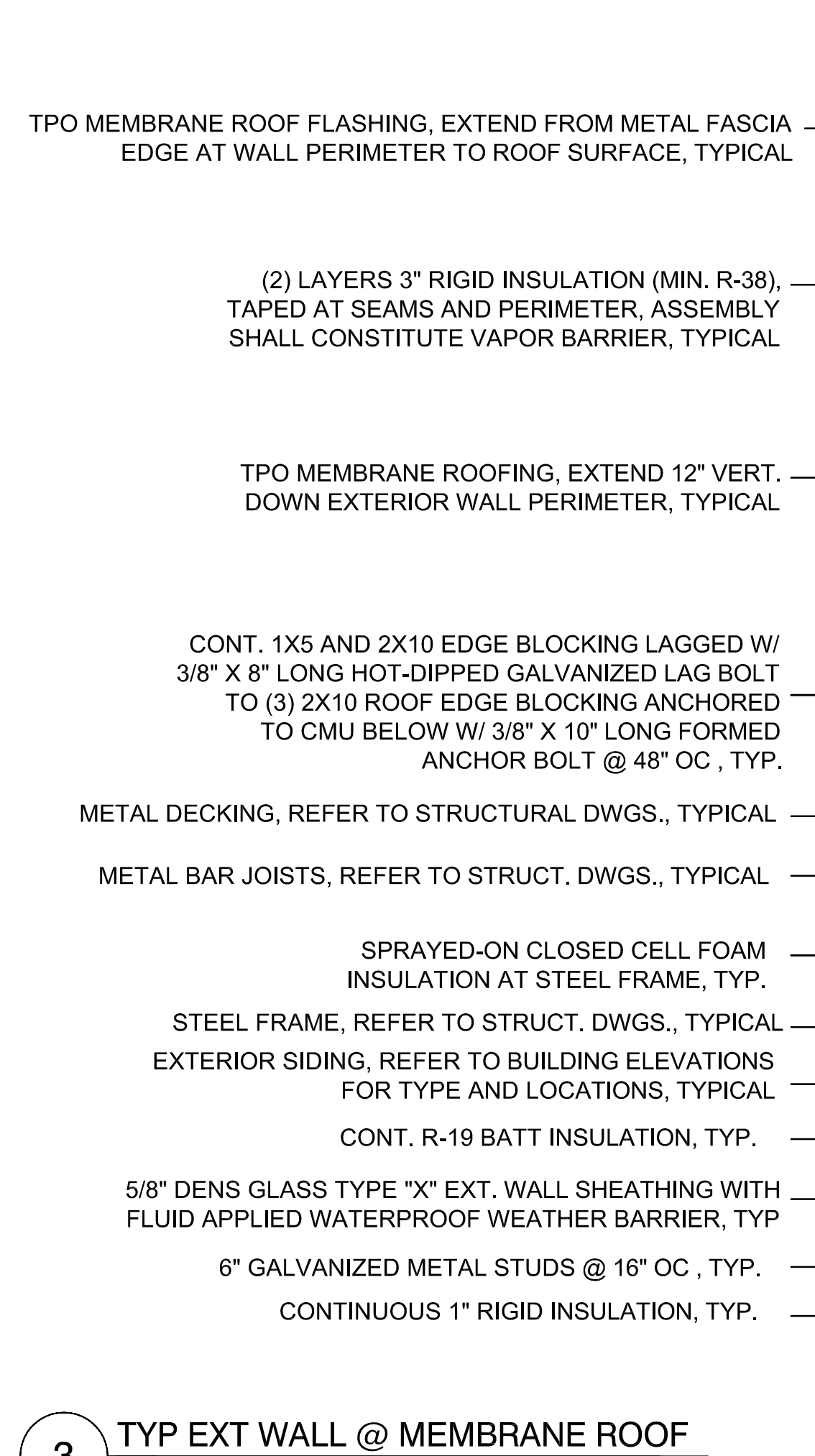
STEEL FRAME, REFER TO STRUCT. DWGS., TYPICAL
EXTERIOR SIDING, REFER TO BUILDING ELEVATIONS FOR TYPE AND LOCATIONS, TYPICAL

CONT. R-19 BATT INSULATION, TYP.

5/8" DENS GLASS TYPE "X" EXT. WALL SHEATHING WITH FLUID APPLIED WATERPROOF WEATHER BARRIER, TYP

6" GALVANIZED METAL STUDS @ 16" OC, TYP.

CONTINUOUS 1" RIGID INSULATION, TYP.



3 TYP EXT WALL @ MEMBRANE ROOF
SCALE: 3" = 1'-0"

EXTERIOR SIDING, REFER TO BUILDING ELEVATIONS FOR TYPE AND LOCATIONS, TYPICAL

1/2" APA FIRE-TREATED PLYWOOD EXTERIOR WALL SHEATHING WITH CONT. APPLIED WEATHER BARRIER FINISH, TYP.

CONTINUOUS 1" RIGID INSULATION OVER "Z" FURRING, TYP.

2" RIGID INSULATION W/ 2" "Z" FURRING AT 24" OC, TYP.

8" NOMINAL REINFORCED CMU WALL, BLOCK FILLER AND PAINTED INTERIOR FACE, REFER TO STRUCTURAL DWGS., TYPICAL

CONT. PREFINISHED METAL FLASHING, EXTEND FROM DRIP TO 8" VERTICALLY FROM WATERTABLE TYP.

COMPOSITE SOLID VINYL WATER TABLE COMPRISED OF CONT., 1X SLOPED CAP, 1 X 4 AND 1 X 10 TRIM, TYPICAL

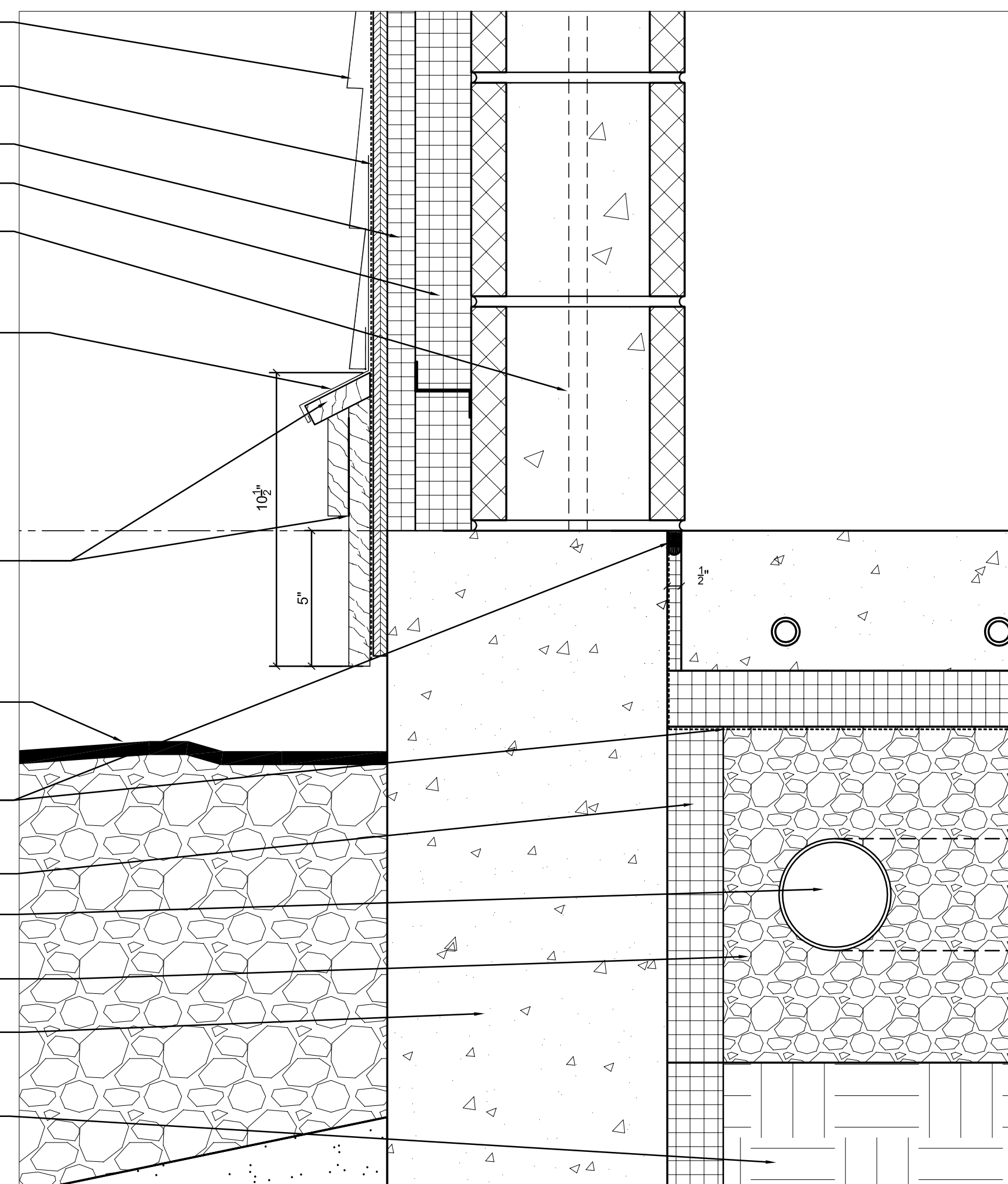
FINISHED GRADE, TYP.

TURN UP REINFORCE MEMBRANE VAPOR / MOISTURE BARRIER, PROVIDE CONT. BACKER ROD AND SEALANT AT FLOOR / WALL JOINT, TYP.

CONTINUOUS 2" RIGID INSULATION BENEATH SLAB ON GRADE, TYPICAL
PERFORATED RADON PIPING, REFER TO RADON SYSTEM PIPING LAYOUT PLAN, TYPICAL

COMPACTED STRUCTURAL FILL, REFER TO STRUCTURAL DRAWINGS, TYPICAL
CAST-IN-PLACE REINFORCED CONCRETE FOUNDATION, REFER TO STRUCTURAL DRAWINGS, TYPICAL

COMPACTED BACK-FILL, TYPICAL



2 TYP EXTERIOR WALL BASE @ STAIRS
SCALE: 3" = 1'-0"

TPO MEMBRANE ROOF FLASHING BOOT, AT BASE OF ROOF LADDER TO ROOF SURFACE, TYPICAL

TPO MEMBRANE ROOF FLASHING, EXTEND FROM METAL FASCIA EDGE AT WALL PERIMETER TO ROOF SURFACE, TYPICAL

(2) LAYERS 3" RIGID INSULATION (MIN. R-38), TAPED AT SEAMS AND PERIMETER, ASSEMBLY SHALL CONSTITUTE VAPOR BARRIER, TYPICAL

(2) 2 X 8 BLOCKING BOLTED TO METAL DECK FOR ATTACHMENT OF ROOF LADDER, TYPICAL

TPO MEMBRANE ROOFING, EXTEND 12" VERT. DOWN EXTERIOR WALL PERIMETER, TYPICAL

METAL DECKING, REFER TO STRUCTURAL DWGS., TYPICAL

CONT. 1X5 AND 2X10 EDGE BLOCKING BOLTED W/ 3/8" X 8" LONG HOT-DIPPED GALVANIZED BOLT TO 2X8 ROOF EDGE BLOCKING ANCHORED TO CMU BELOW W/ 3/8" X 10" LONG FORMED ANCHOR BOLT @ 48" OC, TYP.

METAL BAR JOISTS, REFER TO STRUCT. DWGS., TYPICAL

STEEL FRAME, REFER TO STRUCT. DWGS., TYPICAL

SPRAYED-ON CLOSED CELL FOAM INSULATION AT STEEL FRAME, TYP.

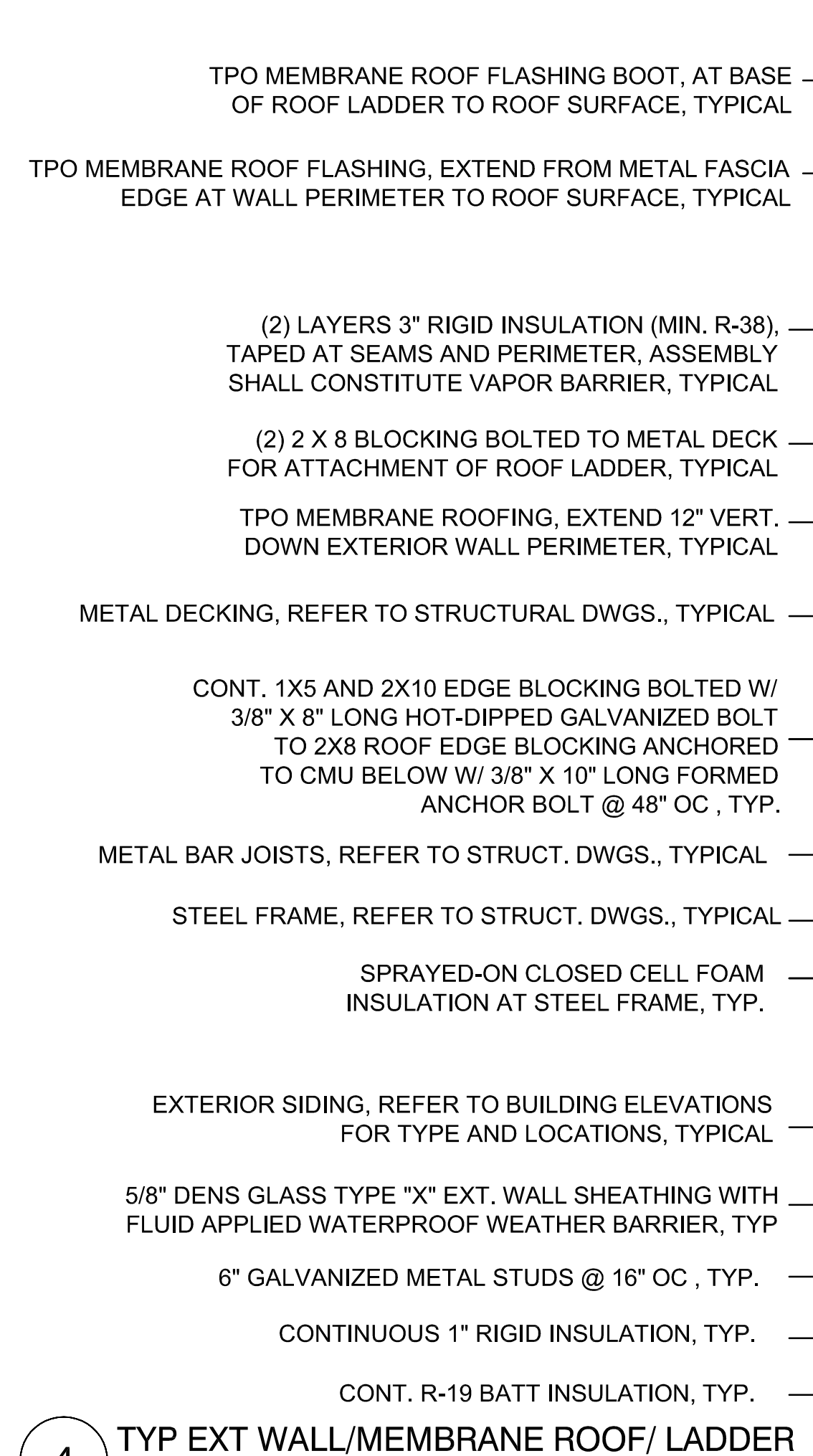
EXTERIOR SIDING, REFER TO BUILDING ELEVATIONS FOR TYPE AND LOCATIONS, TYPICAL

5/8" DENS GLASS TYPE "X" EXT. WALL SHEATHING WITH FLUID APPLIED WATERPROOF WEATHER BARRIER, TYP

6" GALVANIZED METAL STUDS @ 16" OC, TYP.

CONTINUOUS 1" RIGID INSULATION, TYP.

CONT. R-19 BATT INSULATION, TYP.



4 TYP EXT WALL/MEMBRANE ROOF/ LADDER
SCALE: 3" = 1'-0"

COPYRIGHT 2012
REUSE OR REPRODUCTION OF THE
CONTENTS OF THIS DOCUMENT IS NOT
PERMITTED WITHOUT WRITTEN
PERMISSION OF FORESIDE ARCHITECTS

GENERAL NOTES:

1. REPORT AN DISCREPANCIES TO THE ARCHITECT. CONTRACTOR SHALL PROCEED WITH WORK ONLY AFTER DISCREPANCIES HAVE BEEN RESOLVED BY THE ARCHITECT.
2. EXISTING BUILDING COMPONENTS WHICH ARE AFFECTED BY NEW WORK AND DEMOLITION, OR WHICH MAY BE DAMAGED BY THE CONTRACTOR OR ANY SUBCONTRACTOR, SHALL BE REPLACED OR RESTORED TO THE ORIGINAL CONDITION AND COLOR AS APPROVED BY THE ARCHITECT.
3. THE BUILDING SHALL BE CONSTRUCTED TO CONFORM W/ ALL GOVERNING CODES INCLUDING 2006 IBC, NFPA 101 2006, MAINE HUMAN RIGHTS COMMISSION GUIDELINES, STATE OF MAINE PLUMBING CODE, NEC 2005, AND ANSI.
4. ALL EXISTING CONDITIONS ARE TO BE FIELD VERIFIED BY THE CONTRACTOR PRIOR TO FABRICATION. THIS INCLUDES DELIVERY PROCEDURES, DIMENSIONS AND MATERIALS.
5. DRAWINGS ARE NOT TO BE SCALED. CONTRACTOR SHALL VERIFY DIMENSIONS AND CONDITIONS REQUIRING CLARIFICATION.
6. DEMOLITION REQUIRES SELECTIVE REMOVAL AND SUBSEQUENT OFF-SITE DISPOSAL OF THE FOLLOWING: REMOVAL OF ALL MATERIALS DISMANTLED NOT INTENDED FOR RE-USE, AND REMOVAL AND RECONNECTION, CAPPING, TERMINATION OR DISCONNECTION OF ALL WIRING, HEATING AND PLUMBING NOT USED IN THE NEW WORK.
7. THIS PROJECT SHALL NOT CONTAIN HAZARDOUS MATERIALS OF ANY OF PRODUCT, INCLUDING BUT NOT LIMITED TO ASBESTOS.
8. THE CONTRACTOR SHALL OBTAIN ALL REQUIRED PERMITS FROM THE APPROPRIATE OFFICIALS PRIOR THE COMMENCING THE WORK.
9. WHERE ONLY A SINGLE PRODUCT OR MANUFACTURER IS NAMED, PROVIDE THE PRODUCT INDICATED. SUBSTITUTIONS SHALL BE PERMITTED ONLY WHEN APPROVED BY THE OWNER OR THE OWNERS AUTHORIZED REPRESENTATIVE THROUGH WRITTEN DIRECTIVE.
9. AT PROJECT CLOSEOUT, SUBMIT SPECIFIC WARRANTIES, WORKMANSHIP BONDS, MAINTENANCE AGREEMENTS, FINAL CERTIFICATIONS AND SIMILAR DOCUMENTS.
10. COMPLETE FINAL CLEANUP AT PROJECT CLOSEOUT. TOUCH-UP, REPAIR AND RESTORE MARRED EXPOSED FINISHES.
11. THE LOCATION OF ALL DOORFRAMES NOT DIMENSIONED SHALL BE 4" FROM ADJACENT WALLS UNLESS OTHERWISE INDICATED.
12. ALL PARTITIONS SHALL EXTEND FROM FLOOR TO UNDERSIDE OF SUPPORTING STRUCTURE ABOVE UNLESS OTHERWISE NOTED.
13. INSTALL BLOCKING BEHIND ALL SURFACE APPLIED FIXTURES, TRIM, GRAB BARS, SHELVES, CHAIR RAILS, PICTURE RAILS AND BASE MOLDINGS.
14. IF TWO CONFLICTING COND. OR DETAILS EXIST IN THIS DRAWING SET OR ASSOCIATED SPECIFICATIONS IT SHALL BE THE ARCHITECT'S CHOICE TO DECIDE WHICH CONDITION OR DETAIL APPLIES AT NO ADDITIONAL COST.

REVISIONS:



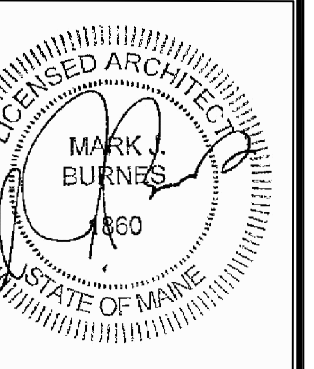
FORESIDE ARCHITECTS
LLC

PO BOX 66736 Phone: 207-781-3344
FALMOUTH, ME 04105

Online @ foresidearchitects.com

Project Status:
BID SET
NOT FOR
CONSTRUCTION

Project Number:
SR0712



Seaside Rehabilitation
and Health Care Center
850 Baxter Blvd
Portland, ME

Drawing Name:
SECTION DETAILS

Scale:
3" = 1'-0"

SHEET

Date:
10/29/12

A4.4