

GENERAL NOTES:

- REPORT AN DISCREPANCIES TO THE ARCHITECT. CONTRACTOR SHALL PROCEED WITH WORK ONLY AFTER DISCREPANCIES HAVE BEEN RESOLVED BY THE ARCHITECT.
- EXISTING BUILDING COMPONENTS WHICH ARE AFFECTED BY NEW WORK AND DEMOLITION, OR WHICH MAY BE DAMAGED BY THE CONTRACTOR OR ANY SUBCONTRACTOR, SHALL BE REPLACED OR RESTORED TO THE ORIGINAL CONDITION AND COLOR AS APPROVED BY THE ARCHITECT.
- THE BUILDING SHALL BE CONSTRUCTED TO CONFORM WITH ALL GOVERNING CODES INCLUDING 2006 IBC, NFPA 101 2006, MAINE HUMAN RIGHTS COMMISSION GUIDELINES, STATE OF MAINE PLUMBING CODE, NEC 2005, AND ANSI.
- ALL EXISTING CONDITIONS ARE TO BE FIELD VERIFIED BY THE CONTRACTOR PRIOR TO FABRICATION. THIS INCLUDES DELIVERY PROCEDURES, DIMENSIONS AND MATERIALS.
- DRAWINGS ARE NOT TO BE SCALED. CONTRACTOR SHALL VERIFY DIMENSIONS AND CONDITIONS REQUIRING CLARIFICATION.
- DEMOLITION REQUIRES SELECTIVE REMOVAL AND SUBSEQUENT OFF-SITE DISPOSAL OF THE FOLLOWING: REMOVAL OF ALL MATERIALS DISMANTLED NOT INTENDED FOR RE-USE, AND REMOVAL AND RECONNECTION, CAPPING, TERMINATION OR DISCONNECTION OF ALL WIRING, HEATING AND PLUMBING NOT USED IN THE NEW WORK.
- THIS PROJECT SHALL NOT CONTAIN HAZARDOUS MATERIALS OF ANY OF PRODUCT, INCLUDING BUT NOT LIMITED TO ASBESTOS.
- THE CONTRACTOR SHALL OBTAIN ALL REQUIRED PERMITS FROM THE APPROPRIATE OFFICIALS PRIOR TO THE COMMENCING THE WORK.
- WHERE ONLY A SINGLE PRODUCT OR MANUFACTURER IS NAMED, PROVIDE THE PRODUCT INDICATED. SUBSTITUTIONS SHALL BE PERMITTED ONLY WHEN APPROVED BY THE OWNER OR THE OWNER'S AUTHORIZED REPRESENTATIVE THROUGH WRITTEN DIRECTIVE.
- AT PROJECT CLOSEOUT, SUBMIT SPECIFIC WARRANTIES, WORKMANSHIP BONDS, MAINTENANCE AGREEMENTS, FINAL CERTIFICATIONS AND SIMILAR DOCUMENTS.
- COMPLETE FINAL CLEANUP AT PROJECT CLOSEOUT. TOUCH-UP, REPAIR AND RESTORE MARRED EXPOSED FINISHES.
- THE LOCATION OF ALL DOORFRAMES NOT DIMENSIONED SHALL BE 4" FROM ADJACENT WALLS UNLESS OTHERWISE INDICATED.
- ALL PARTITIONS SHALL EXTEND FROM FLOOR TO UNDERSIDE OF SUPPORTING STRUCTURE ABOVE UNLESS OTHERWISE NOTED.
- INSTALL BLOCKING BEHIND ALL SURFACE APPLIED FIXTURES, TRIM, GRAB BARS, SHELVES, CHAIR RAILS, PICTURE RAILS AND BASE MOLDINGS.
- IF TWO CONFLICTING COND. OR DETAILS EXIST IN THIS DRAWING SET OR ASSOCIATED SPECIFICATIONS IT SHALL BE THE ARCHITECTS CHOICE TO DECIDE WHICH CONDITION OR DETAIL APPLIES AT NO ADDITIONAL COST.

REVISIONS:



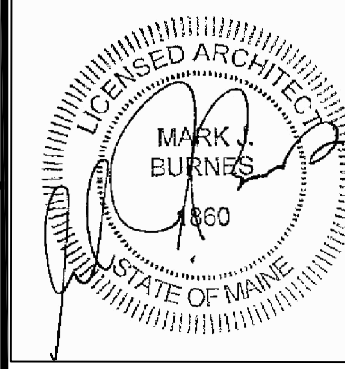
FORESIDE ARCHITECTS
 LLC

PO BOX 66736 Phone: 207-781-3344
 FALMOUTH, ME 04105

Online @ foresidearchitects.com

Project Status:
 BID SET
 NOT FOR
 CONSTRUCTION

Project Number:
 SR0712



Seaside Rehabilitation
 and Health Care Center
 850 Baxter Blvd
 Portland, ME

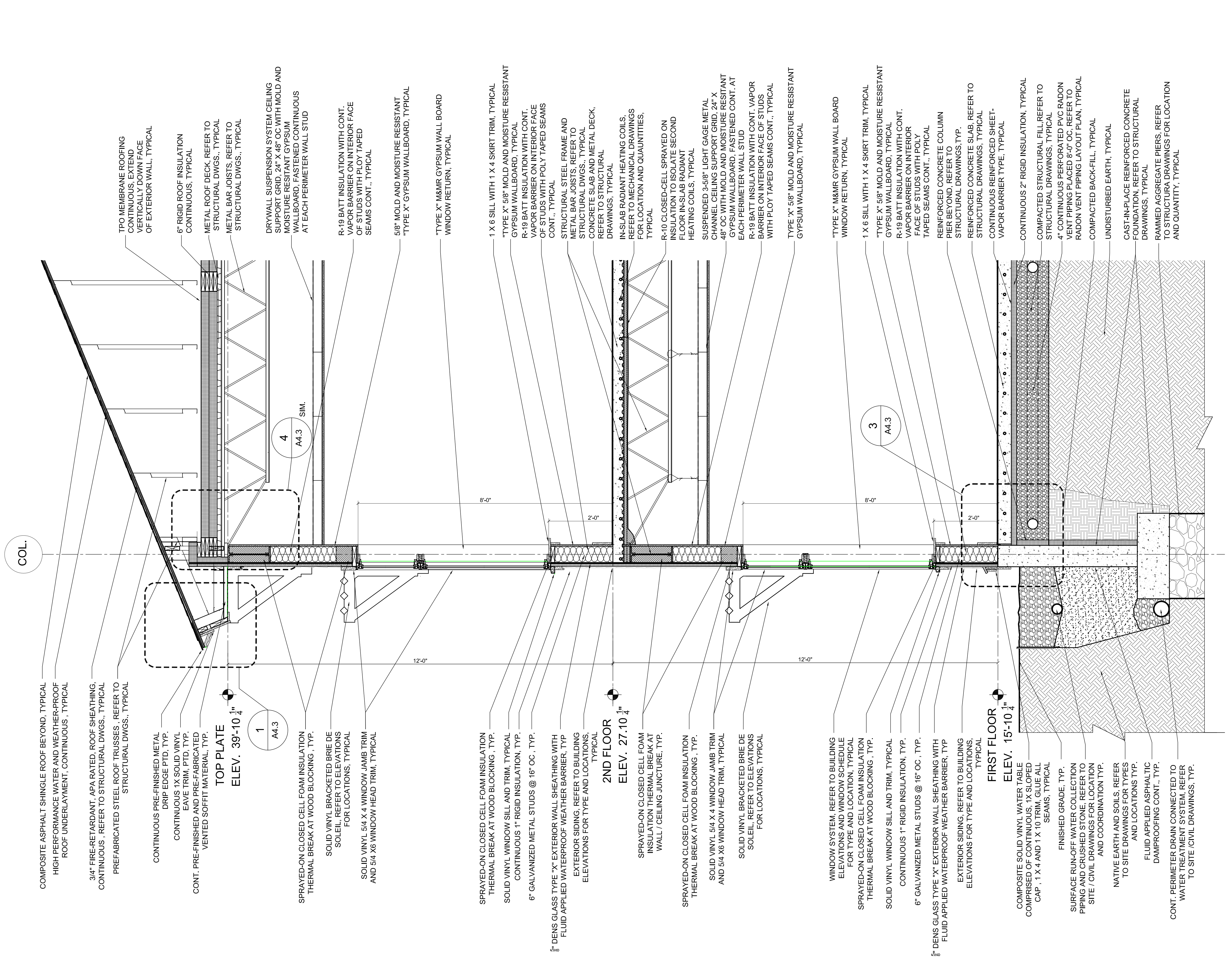
Drawing Name:
 WALL SECTION

Scale:
 3/4" = 1'-0"

Date:
 10/29/12

SHEET
A3.6

1 WALL SECTION @ BUILDING EXTERIOR/HIP ROOF
 3/4"=1'-0"



COL.

COMPOSITE ASPHALT SHINGLE ROOF BEYOND, TYPICAL
 HIGH PERFORMANCE WATER AND WEATHER-PROOF
 ROOF UNDERLAYMENT, CONTINUOUS, TYPICAL

3/4" FIRE-RETARDANT, APA RATED, ROOF SHEATHING,
 CONTINUOUS, REFER TO STRUCTURAL DWGS., TYPICAL

PREFABRICATED STEEL ROOF TRUSSES, REFER TO
 STRUCTURAL DWGS., TYPICAL

CONTINUOUS PRE-FINISHED METAL
 DRIP EDGE PTD, TYP.

CONTINUOUS 1X SOLID VINYL
 EAVE TRIM, PTD, TYP.

CONT. PRE-FINISHED AND PRE-FABRICATED
 VENTED SOFFIT MATERIAL, TYP.

TOP PLATE
ELEV. 39'-10 1/4"

1
 A4.3

SPRAYED-ON CLOSED CELL FOAM INSULATION
 THERMAL BREAK AT WOOD BLOCKING, TYP.

SOLID VINYL BRACKETED BRIE DE
 SOLEIL, REFER TO ELEVATIONS
 FOR LOCATIONS, TYPICAL

SOLID VINYL 5/4 X 4 WINDOW JAMB TRIM
 AND 5/4 X 6 WINDOW HEAD TRIM, TYPICAL

12'-0"

SPRAYED-ON CLOSED CELL FOAM INSULATION
 THERMAL BREAK AT WOOD BLOCKING, TYP.

SOLID VINYL WINDOW SILL AND TRIM, TYPICAL
 CONTINUOUS 1" RIGID INSULATION, TYP.

6" GALVANIZED METAL STUDS @ 16" OC, TYP.

8'-0"

5/8" DEN'S GLASS TYPE "X" EXTERIOR WALL SHEATHING WITH
 FLUID APPLIED WATERPROOF WEATHER BARRIER, TYP

EXTERIOR SIDING, REFER TO BUILDING
 ELEVATIONS FOR TYPE AND LOCATIONS,
 TYPICAL

2ND FLOOR
ELEV. 27'-10 1/4"

2'-0"

SPRAYED-ON CLOSED CELL FOAM
 INSULATION THERMAL BREAK AT
 WALL / CEILING JUNCTURE, TYP.

SPRAYED-ON CLOSED CELL FOAM INSULATION
 THERMAL BREAK AT WOOD BLOCKING, TYP.

12'-0"

SOLID VINYL 5/4 X 4 WINDOW JAMB TRIM
 AND 5/4 X 6 WINDOW HEAD TRIM, TYPICAL

SOLID VINYL BRACKETED BRIE DE
 SOLEIL, REFER TO ELEVATIONS
 FOR LOCATIONS, TYPICAL

WINDOW SYSTEM, REFER TO BUILDING
 ELEVATIONS AND WINDOW SCHEDULE
 FOR TYPE AND LOCATION, TYPICAL

SPRAYED-ON CLOSED CELL FOAM INSULATION
 THERMAL BREAK AT WOOD BLOCKING, TYP.

3
 A4.3

SOLID VINYL WINDOW SILL AND TRIM, TYPICAL
 CONTINUOUS 1" RIGID INSULATION, TYP.

6" GALVANIZED METAL STUDS @ 16" OC, TYP.

8'-0"

5/8" DEN'S GLASS TYPE "X" EXTERIOR WALL SHEATHING WITH
 FLUID APPLIED WATERPROOF WEATHER BARRIER, TYP

EXTERIOR SIDING, REFER TO BUILDING
 ELEVATIONS FOR TYPE AND LOCATIONS,
 TYPICAL

FIRST FLOOR
ELEV. 15'-10 1/4"

2'-0"

COMPOSITE SOLID VINYL WATER TABLE
 COMPRISED OF CONTINUOUS, 1X SLOPED
 CAP, 1 X 4 AND 1 X 10 TRIM, GLUE ALL
 SEAMS, TYPICAL

FINISHED GRADE, TYP.

SURFACE RUN-OFF WATER COLLECTION
 PIPING AND CRUSHED STONE, REFER TO
 SITE / CIVIL DRAWINGS FOR LOCATION
 AND COORDINATION TYP.

NATIVE EARTH AND SOILS, REFER
 TO SITE DRAWINGS FOR TYPES
 AND LOCATIONS TYP.

FLUID APPLIED ASPHALTIC
 DAMPROOFING CONT., TYP.

CONT. PERIMETER DRAIN CONNECTED TO
 WATER TREATMENT SYSTEM, REFER
 TO SITE / CIVIL DRAWINGS, TYP.

TPO MEMBRANE ROOFING
 CONTINUOUS, EXTEND
 VERTICALLY DOWN FACE
 OF EXTERIOR WALL, TYPICAL

6" RIGID ROOF INSULATION
 CONTINUOUS, TYPICAL

METAL ROOF DECK, REFER TO
 STRUCTURAL DWGS., TYPICAL

METAL BAR JOISTS, REFER TO
 STRUCTURAL DWGS., TYPICAL

DRYWALL SUSPENSION SYSTEM CEILING
 SUPPORT GRID, 24" X 48" OC WITH MOLD AND
 MOISTURE RESISTANT GYPSUM
 WALLBOARD, FASTENED CONTINUOUS
 AT EACH PERIMETER WALL STUD

R-19 BATT INSULATION WITH CONT.
 VAPOR BARRIER ON INTERIOR FACE
 OF STUDS WITH PLOY TAPED
 SEAMS CONT., TYPICAL

5/8" MOLD AND MOISTURE RESISTANT
 "TYPE X" GYPSUM WALLBOARD, TYPICAL

"TYPE X" M&MR GYPSUM WALL BOARD
 WINDOW RETURN, TYPICAL

1 X 6 SILL WITH 1 X 4 SKIRT TRIM, TYPICAL

"TYPE X" 5/8" MOLD AND MOISTURE RESISTANT
 GYPSUM WALLBOARD, TYPICAL

R-19 BATT INSULATION WITH CONT.
 VAPOR BARRIER ON INTERIOR FACE
 OF STUDS WITH POLY TAPED SEAMS
 CONT., TYPICAL

STRUCTURAL STEEL FRAME AND
 METAL BAR JOISTS, REFER TO
 STRUCTURAL DWGS., TYPICAL

CONCRETE SLAB AND METAL DECK,
 REFER TO STRUCTURAL
 DRAWINGS, TYPICAL

IN-SLAB RADIANT HEATING COILS,
 REFER TO MECHANICAL DRAWINGS
 FOR LOCATION AND QUANTITIES,
 TYPICAL

R-10 CLOSED-CELL SPRAYED ON
 INSULATION TO ISOLATE SECOND
 FLOOR IN-SLAB RADIANT
 HEATING COILS, TYPICAL

SUSPENDED 3-5/8" LIGHT GAGE METAL
 CHANNEL CEILING SUPPORT GRID, 24" X
 48" OC WITH MOLD AND MOISTURE RESITANT
 GYPSUM WALLBOARD, FASTENED CONT. AT
 EACH PERIMETER WALL STUD

R-19 BATT INSULATION WITH CONT. VAPOR
 BARRIER ON INTERIOR FACE OF STUDS
 WITH PLOY TAPED SEAMS CONT., TYPICAL

TYPE "X" 5/8" MOLD AND MOISTURE RESISTANT
 GYPSUM WALLBOARD, TYPICAL

"TYPE X" M&MR GYPSUM WALL BOARD
 WINDOW RETURN, TYPICAL

1 X 6 SILL WITH 1 X 4 SKIRT TRIM, TYPICAL

"TYPE X" 5/8" MOLD AND MOISTURE RESISTANT
 GYPSUM WALLBOARD, TYPICAL

R-19 BATT INSULATION WITH CONT.
 VAPOR BARRIER ON INTERIOR
 FACE OF STUDS WITH POLY
 TAPED SEAMS CONT., TYPICAL

REINFORCED CONCRETE COLUMN
 PIER BEYOND, REFER TO
 STRUCTURAL DRAWINGS, TYP.

REINFORCED CONCRETE SLAB, REFER TO
 STRUCTURAL DRAWINGS, TYPICAL

CONTINUOUS REINFORCED SHEET-
 VAPOR BARRIER TYPE, TYPICAL

CONTINUOUS 2" RIGID INSULATION, TYPICAL

COMPACTED STRUCTURAL FILL REFER TO
 STRUCTURAL DRAWINGS, TYPICAL

4" CONTINUOUS PERFORATED PVC RADON
 VENT PIPING PLACED 8'-0" OC, REFER TO
 RADON VENT PIPING LAYOUT PLAN, TYPICAL

COMPACTED BACK-FILL, TYPICAL

UNDISTURBED EARTH, TYPICAL

CAST-IN-PLACE REINFORCED CONCRETE
 FOUNDATION, REFER TO STRUCTURAL
 DRAWINGS, TYPICAL

RAMMED AGGREGATE PIERS, REFER
 TO STRUCTURA DRAWINGS FOR LOCATION
 AND QUANTITY, TYPICAL