

2009 IBC: CODE DATA		2009 NFPA: CODE DATA	
USE GROUP CLASSIFICATION	INSTITUTIONAL GROUP 1-2*	OCCUPANT LOAD - FLOOR AREA	18,000 SF TOTAL
TYPE OF CONSTRUCTION	I A (PROTECTED NON-COMBUSTIBLE)	TOTAL FLOOR SPECIFIED BUILDING AREA LESS STORAGE AREAS	25,400 SF TOTAL
FLOOR AREA	25,400 SF	OCCUPANT LOAD - HEALTH CARE FACILITY (PATIENT CARE)	240 SF / OCCUPANT = 84 OCCUPANTS
TABLE 503 BUILDING AREA LIMITATION-SF	15,000 SF	USE GROUP CLASSIFICATION	NEW HEALTH CARE
SOIL 2 STREET FRONTAGE INCREASE - (20%)	3,750 SF	TYPE OF CONSTRUCTION	PROTECTED TYPE II (111)
SOIL 2 AUTOMATIC SPRINKLER SYSTEM (INCREASE 200%)	30,000 SF	ACTUAL BUILDING AREA	25,400 SF TOTAL
ALLOWABLE BUILDING FLOOR AREA-SF	48,750 SF	BUILDING HEIGHT	TWO STORES
BUILDING HEIGHT	TWO STORY	FIRE SUPPRESSION	SUPPLEMENTED FIRE SUPPRESSION PROVIDED
FIRE SUPPRESSION	FULLY SUPPLEMENTED FIRE SUPPRESSION	PERSONAL-EXERCISING/ NEW HEALTHCARE (STAIRWAYS)	2 HR
FIRE WALL 1-2 EXISTING AND 1-2 NEW SEPARATION	COMBUSTIBLE NON-COMBUSTIBLE	STAR ENCLOSURES	1 HR
STAR ENCLOSURES	1 HR	SWIFTS	1 HR
SWIFTS	1 HR	INTERIOR LOAD BEARING WALLS	1 HR
EXIT ACCESS CORRIDORS	1 HR	STRUCTURAL MEMBER SUPPORTING FLOORS AND ROOF	1 HR
INTERIOR LOAD BEARING WALLS	1 HR	STAR ENCLOSURES	1 HR
STRUCTURAL MEMBER SUPPORTING WALLS	1 HR	ROOF CONSTRUCTION	1 HR
FLOOR CONSTRUCTION	1 HR	FIRE EXTINGUISHERS	LOCATIONS TO BE VERIFIED IN FIELD BY FIRE CHIEF PRIOR TO INSTALLATION
ROOF CONSTRUCTION	1 HR	ARRANGEMENT OF MEANS OF EGRESS	NOT TO EXCEED 30 FT
FIRE EXTINGUISHERS	LOCATIONS TO BE VERIFIED IN FIELD BY FIRE CHIEF PRIOR TO INSTALLATION	COMMON PATH OF TRAVEL	NOT TO EXCEED 75 FT
FLAME SPREAD RATINGS	CLASS A OR CLASS B	CORRIDOR WIDTH	80 INCHES MIN
REQUIRED VERTICAL EXITS	CLASS A OR CLASS B	FLAME SPREAD RATINGS	
CORRIDORS PROVIDING EXIT ACCESS	CLASS A OR CLASS B	INTERIOR FINISH REQUIREMENTS	CLASS A OR CLASS B
ROOMS OR ENCLOSED SPACES	CLASS A OR CLASS B	REQUIRED VERTICAL EXITS	CLASS A OR CLASS B
INTERIOR FLOOR FINISH REQUIREMENTS	CLASS 1 OR CLASS 11	CORRIDORS PROVIDING EXIT ACCESS	CLASS A OR CLASS B
CORRIDORS PROVIDING EXIT ACCESS	CLASS 1 OR CLASS 11	ROOMS OR ENCLOSED SPACES	CLASS A OR CLASS B
ROOMS OR ENCLOSED SPACES	CLASS 1 OR CLASS 11	INTERIOR FLOOR FINISH REQUIREMENTS	CLASS 1 OR CLASS 11
GENERAL NOTES:	1. ALL PENETRATIONS OF FIRE RATED WALLS AND FLOORS SHALL BE SEALED WITH APPROVED MATERIALS AND THE DAMPERS SHALL CONFORM TO LOCAL AND STATE CODES, ORDINANCES AND REQUIREMENTS, ACCESSIBILITY PER ADA/AA.	REQUIRED VERTICAL EXITS	CLASS 1 OR CLASS 11
		CORRIDORS PROVIDING EXIT ACCESS	CLASS 1 OR CLASS 11
		ROOMS OR ENCLOSED SPACES	CLASS 1 OR CLASS 11
		GENERAL NOTES:	1. ALL PENETRATIONS OF FIRE RATED WALLS AND FLOORS SHALL BE SEALED WITH APPROVED MATERIALS AND FIRE DAMPERS REQUIRED. 2. ALL WORK SHALL CONFORM TO LOCAL AND STATE CODES, ORDINANCES AND REQUIREMENTS, ACCESSIBILITY PER ADA/AA.

COPYRIGHT 2013
 REUSE OR REPRODUCTION OF THE
 CONTENTS OF THIS DOCUMENT IS NOT
 PERMITTED WITHOUT WRITTEN
 PERMISSION OF FORESIDE ARCHITECTS

GENERAL NOTES:

- REPORT AN DISCREPANCIES TO THE ARCHITECT. CONTRACTOR SHALL PROCEED WITH WORK ONLY AFTER DISCREPANCIES HAVE BEEN RESOLVED BY THE ARCHITECT.
- EXISTING BUILDING COMPONENTS WHICH ARE AFFECTED BY NEW WORK AND DEMOLITION, OR WHICH MAY BE DAMAGED BY THE CONTRACTOR OR ANY SUBCONTRACTOR, SHALL BE REPLACED OR RESTORED TO THE ORIGINAL CONDITION AND COLOR AS APPROVED BY THE ARCHITECT.
- THE BUILDING SHALL BE CONSTRUCTED TO CONFORM W/ ALL GOVERNING CODES INCLUDING 2009 IBC, NFPA 101 2006, MAINE HUMAN RIGHTS COMMISSION GUIDELINES, STATE OF MAINE PLUMBING CODE, NEC 2005, AND ANS.
- ALL EXISTING CONDITIONS ARE TO BE FIELD VERIFIED BY THE CONTRACTOR PRIOR TO FABRICATION. THIS INCLUDES DELIVERY PROCEDURES, DIMENSIONS AND MATERIALS.
- DRAWINGS ARE NOT TO BE SCALED. CONTRACTOR SHALL VERIFY DIMENSIONS AND CONDITIONS REQUIRING CLARIFICATION.
- DEMOLITION REQUIRES SELECTIVE REMOVAL AND SUBSEQUENT OFF-SITE DISPOSAL OF THE FOLLOWING: REMOVAL OF ALL MATERIALS DISMANTLED NOT INTENDED FOR RE-USE, AND REMOVAL AND RECONNECTION, CAPPING, TERMINATION OR DISCONNECTION OF ALL WIRING, HEATING AND PLUMBING NOT USED IN THE NEW WORK.
- THIS PROJECT SHALL NOT CONTAIN HAZARDOUS MATERIALS OF ANY OF PRODUCT, INCLUDING BUT NOT LIMITED TO ASBESTOS.
- THE CONTRACTOR SHALL OBTAIN ALL REQUIRED PERMITS FROM THE APPROPRIATE OFFICIALS PRIOR TO THE COMMENCING THE WORK.
- WHERE ONLY A SINGLE PRODUCT OR MANUFACTURER IS NAMED, PROVIDE THE PRODUCT INDICATED. SUBSTITUTIONS SHALL BE PERMITTED ONLY WHEN APPROVED BY THE OWNER OR THE OWNER'S AUTHORIZED REPRESENTATIVE THROUGH WRITTEN DIRECTIVE.
- AT PROJECT CLOSEOUT, SUBMIT SPECIFIC WARRANTIES, WORKMANSHIP BONDS, MAINTENANCE AGREEMENTS, FINAL CERTIFICATIONS AND SIMILAR DOCUMENTS.
- COMPLETE FINAL CLEANUP AT PROJECT CLOSEOUT. TOUCHUP, REPAIR AND RESTORE MARKED EXPOSED FINISHES.
- THE LOCATION OF ALL DOORFRAMES NOT DIMENSIONED SHALL BE 4" FROM ADJACENT WALLS UNLESS OTHERWISE INDICATED.
- ALL PARTITIONS SHALL EXTEND FROM FLOOR TO UNDERSIDE OF SUPPORTING STRUCTURE ABOVE UNLESS OTHERWISE NOTED.
- INSTALL BLOCKING BEHIND ALL SURFACE APPLIED FIXTURES, TRIM, GRAB BARS, SHELVES, CHAIR RAILS, PICTURE RAILS AND BASE MOLDINGS.
- IF TWO CONFLICTING COND. OR DETAILS EXIST IN THIS DRAWING SET OR ASSOCIATED SPECIFICATIONS IT SHALL BE THE ARCHITECTS CHOICE TO DECIDE WHICH CONDITION OR DETAIL APPLIES AT NO ADDITIONAL COST.

REVISIONS:



PO BOX 66736 Phone: 207-781-3344
 FALMOUTH, ME 04105
 Online @ foresidearchitects.com

Project Status:
CONSTRUCTION SET

Project Number:
 SR0712

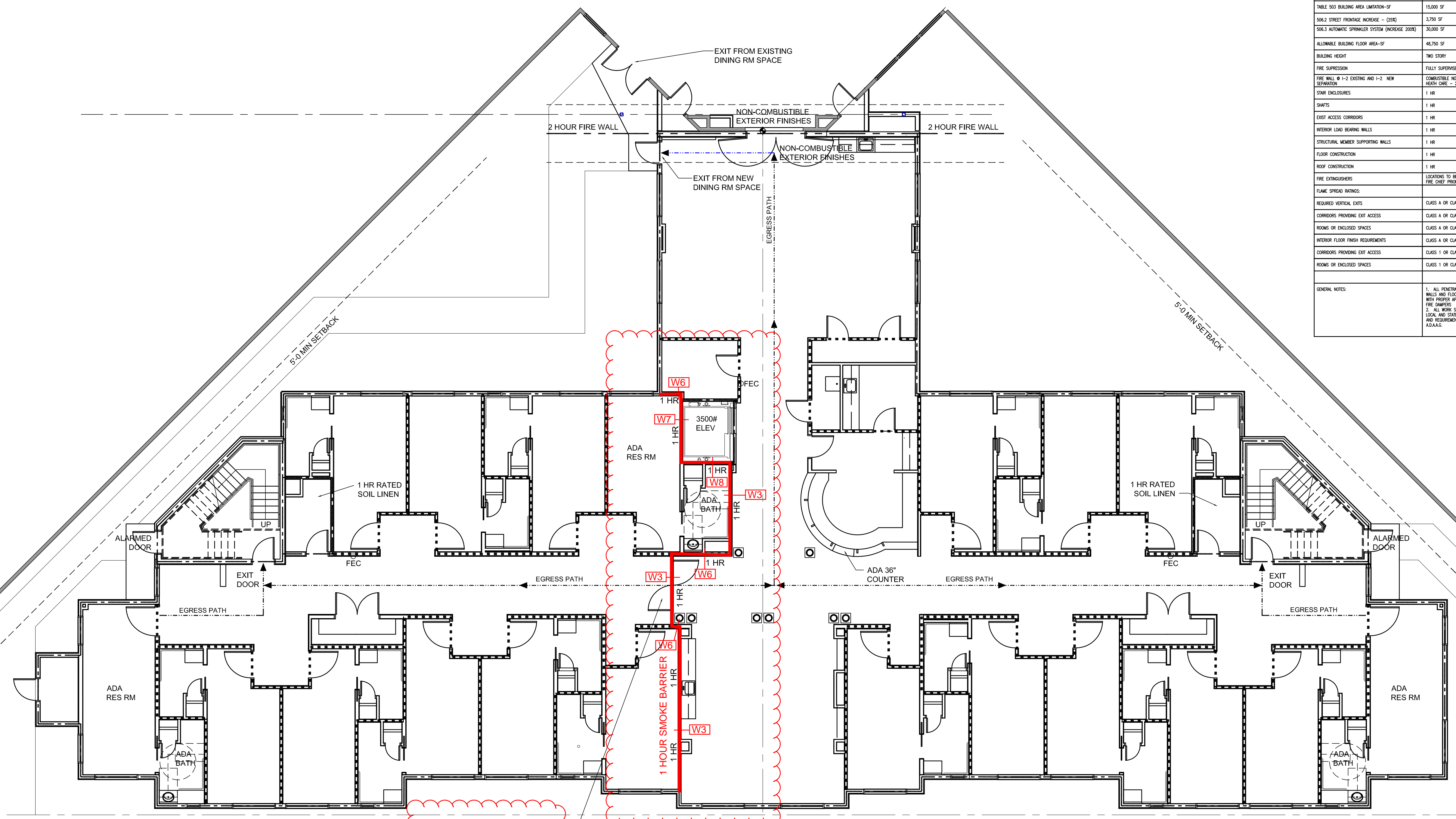
Seaside Rehabilitation
 and Health Care Center
 850 Baxter Blvd
 Portland, ME 04103

Drawing Name:
 First Floor Code Plan

Scale:
 1/8"=1'-0"

Date:
 REV. 1/24/13

SHEET
SK-1.1



7'-0 X 7'-0 20 MIN
 DOUBLE ACTING DOORS
 WITH VISION PEEK AND
 HOLD OPENS TIED TO
 ALARM SYSTEM

COR #2

**SMOKE BARRIER WALL-TYPES SHOWN
 WITH NUMERIC DESIGNATION ARE
 INTENDED TO CORRESPOND WITH THE
 WALL-TYPES SHOWN ON SHEET G-2
 OF THE CONSTRUCTION DOCUMENTS**

CODE WALL LEGEND

	SMOKE PARTITIONS
	1 HR SMOKE BARRIER
	1 HOUR WALLS
	EGRESS PATH

- CODE PLAN NOTES:**
- ALL ADA BATHS AND ADA SPA SHALL HAVE SHOWERS WITH 1/2" THRESHOLDS WITH RUBBER DAM.
 - TYPICAL SHOWERS SHALL HAVE 2" HIGH THRESHOLDS.
 - ALL SHOWERS AND WATERCLOSETS SHALL HAVE BLOCKING AND GRAB BARS.
 - FIRE ALARM SHALL BE CONNECTED TO EXISTING PANEL IN ADJACENT BUILDING. SEE ELEC SHEET E-1

1 FIRST FLOOR PLAN
 SCALE: 1/8" = 1'-0"