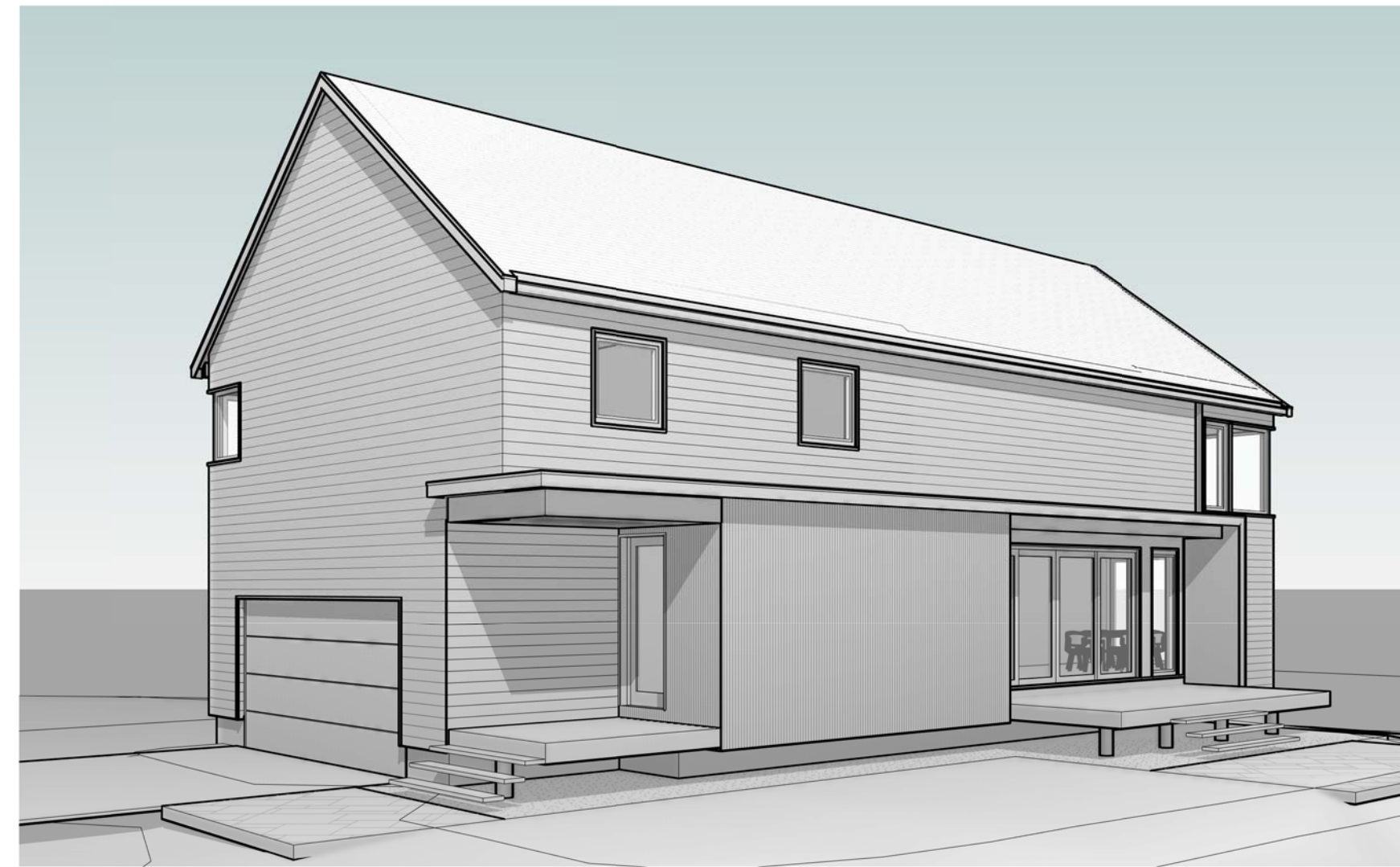
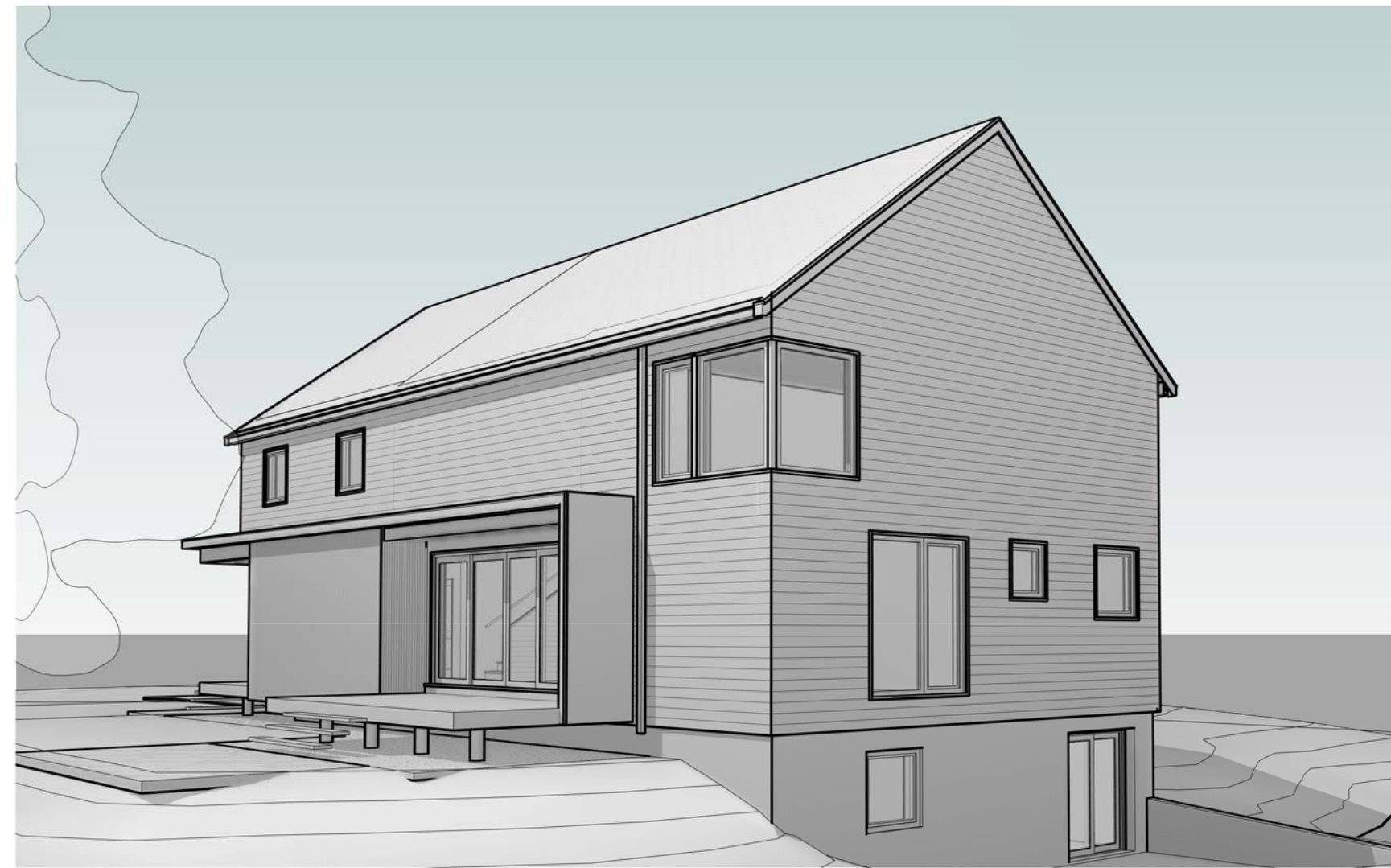


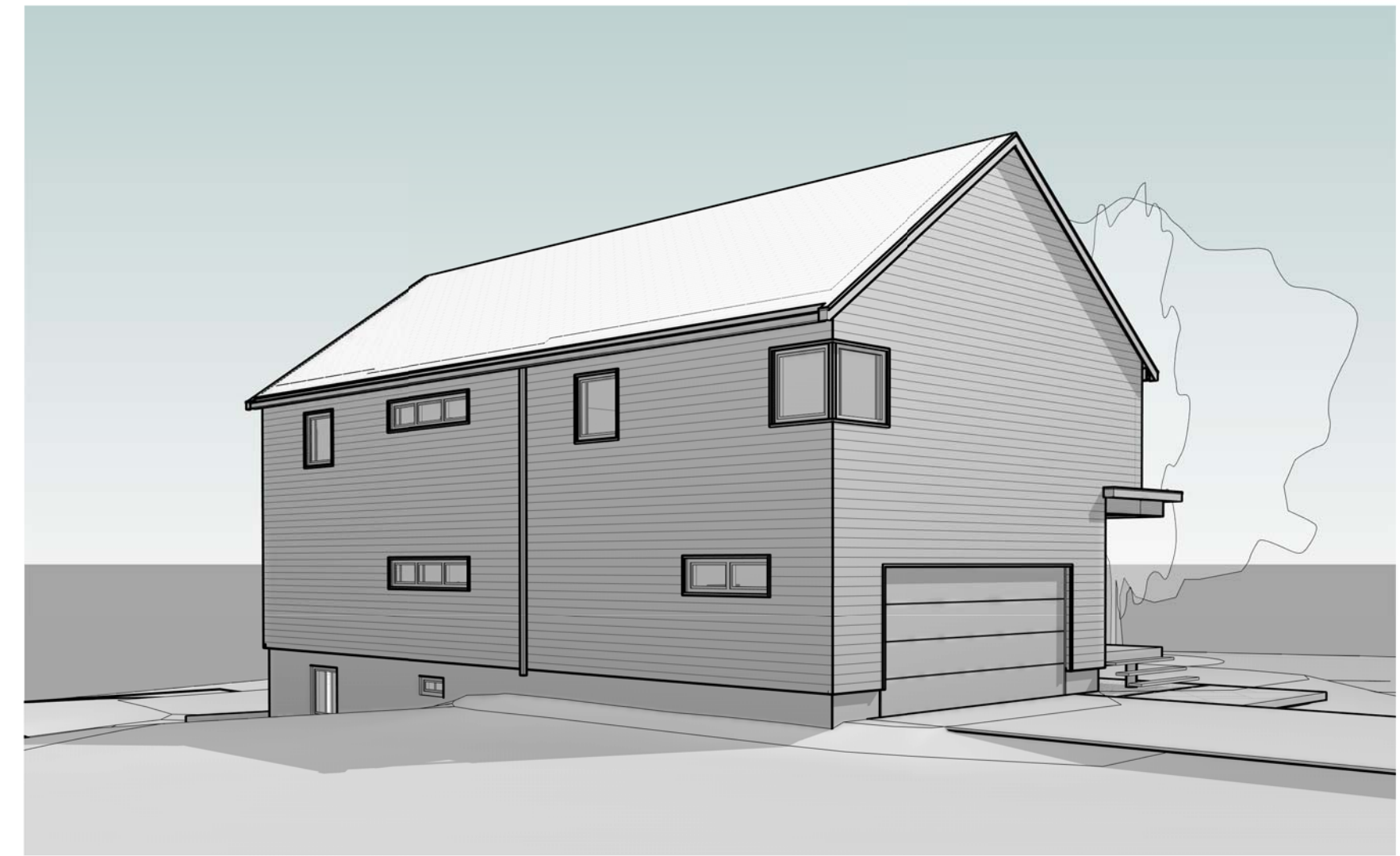
**PRADO-LENGUA RESIDENCE**  
50 FERNALD STREET, PORTLAND, MAINE



1 SOUTHWEST VIEW



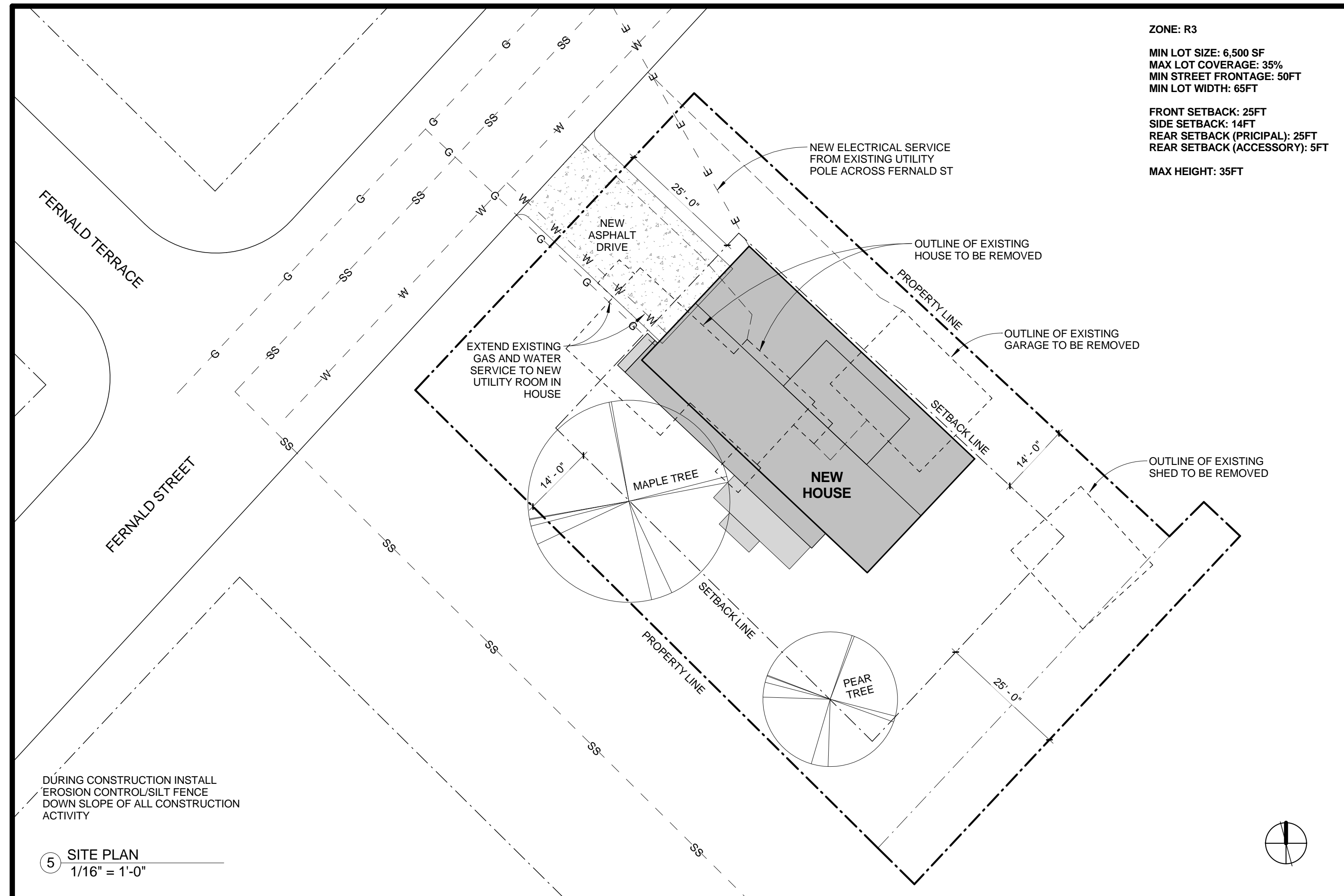
2 SOUTHEAST VIEW



3 NORTHWEST VIEW

# PRADO-LENGUA RESIDENCE

## FERNALD STREET, PORTLAND, ME



SYMBOL LEGEND	
	DETAIL NUMBER BUILDING SECTION DRAWING NUMBER
	DETAIL NUMBER CALL OUT DRAWING NUMBER
	CENTERLINE
	DOOR TAG
	ELEVATION INDICATOR
	ELEVATION TAG
	ELEVATION TAG
	NORTH ARROW
	REVISION
	ROOM TAG WITH NUMBER
	STRUCTURAL GRID BUBBLE
	WALL TAG
	WINDOW TAG

DRAWING LIST	
NUMBER	SHEET TITLE
A001	COVER SHEET
A101	BASEMENT PLAN & WALL TYPES
A102	FLOOR PLANS
A201	EXTERIOR ELEVATIONS
A301	BUILDING SECTIONS
A302	BUILDING SECTIONS
A303	BUILDING SECTIONS
A401	SECTION DETAILS
A402	WINDOW & DOOR SCHEDULES & DETAILS
S101	FOUNDATION AND FRAMING PLAN
S102	SECOND FLOOR AND ROOF FRAMING PLANS

CONSULTANTS:

REVISIONS:

ISSUED: 06/05/15  
 PROJECT No: 1504  
 DRAWN BY: RIP  
 CHECKED BY: CMB  
 SHEET TITLE:  
 COVER SHEET

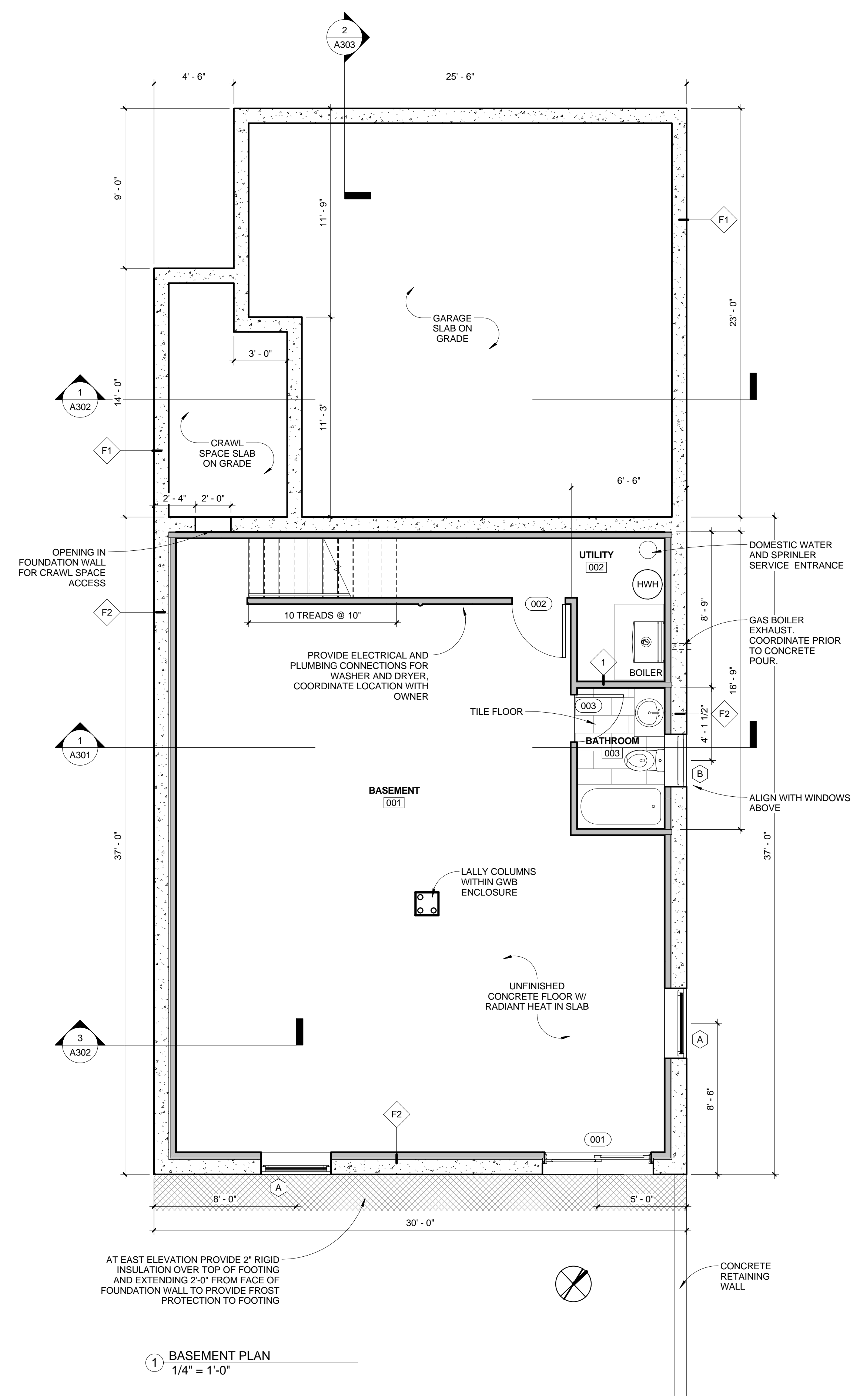
**A001**



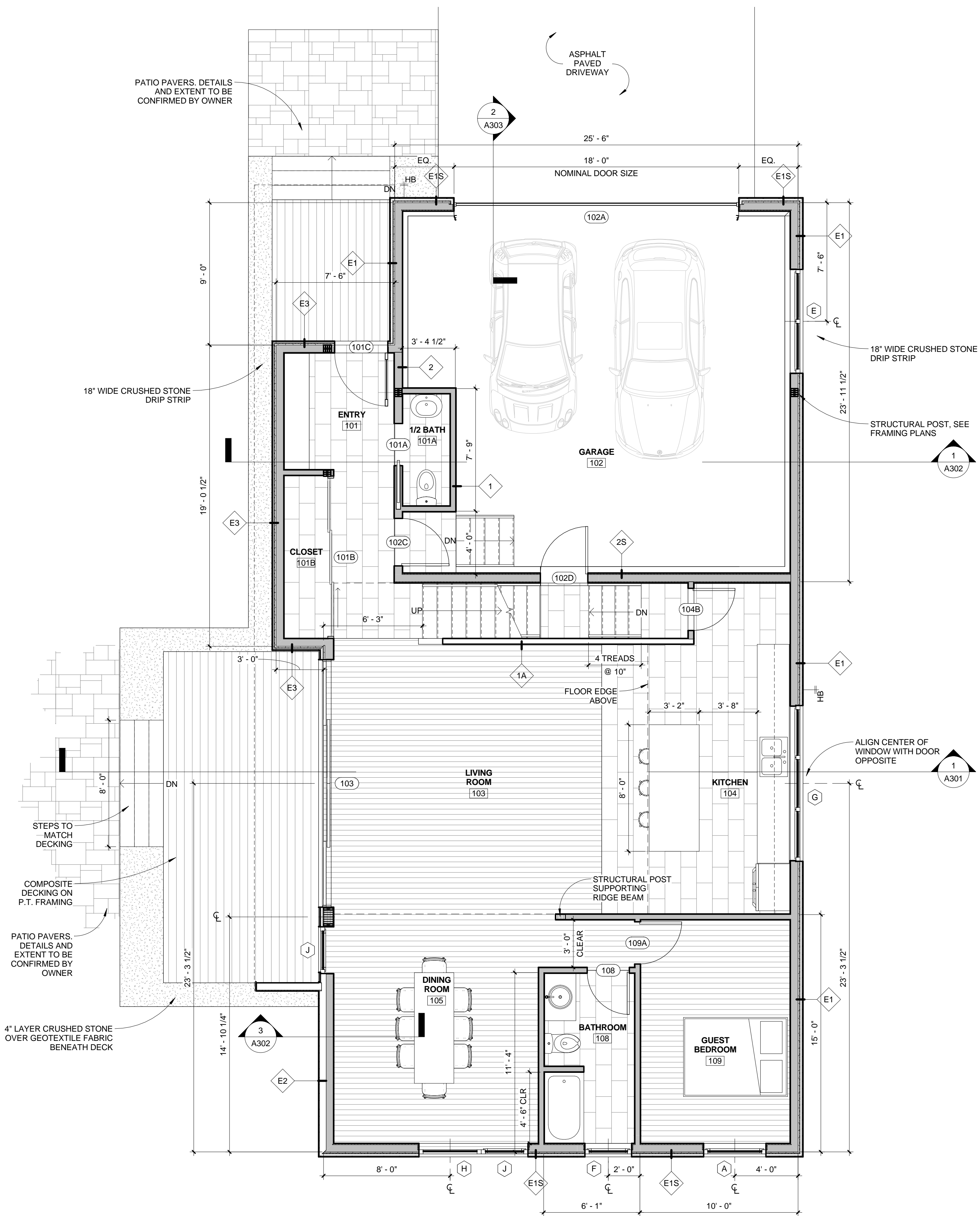
GENERAL NOTES:  
1. PROVIDE NFPA 13D COMPLIANT RESIDENTIAL SPRINKLER SYSTEM TO BE DESIGNED AND INSTALLED BY SPRINKLER SUB-CONTRACTOR. COORDINATE WORK WITH OTHER TRADES.

1		1S	SHEAR WALL - REFER TO STRUCTURAL DRAWINGS 
2		2S	SHEAR WALL - REFER TO STRUCTURAL DRAWINGS 
F1		F2	
E1		E1S	SHEAR WALL - REFER TO STRUCTURAL DRAWINGS 
E2		E3	SHEAR WALL - REFER TO STRUCTURAL DRAWINGS 

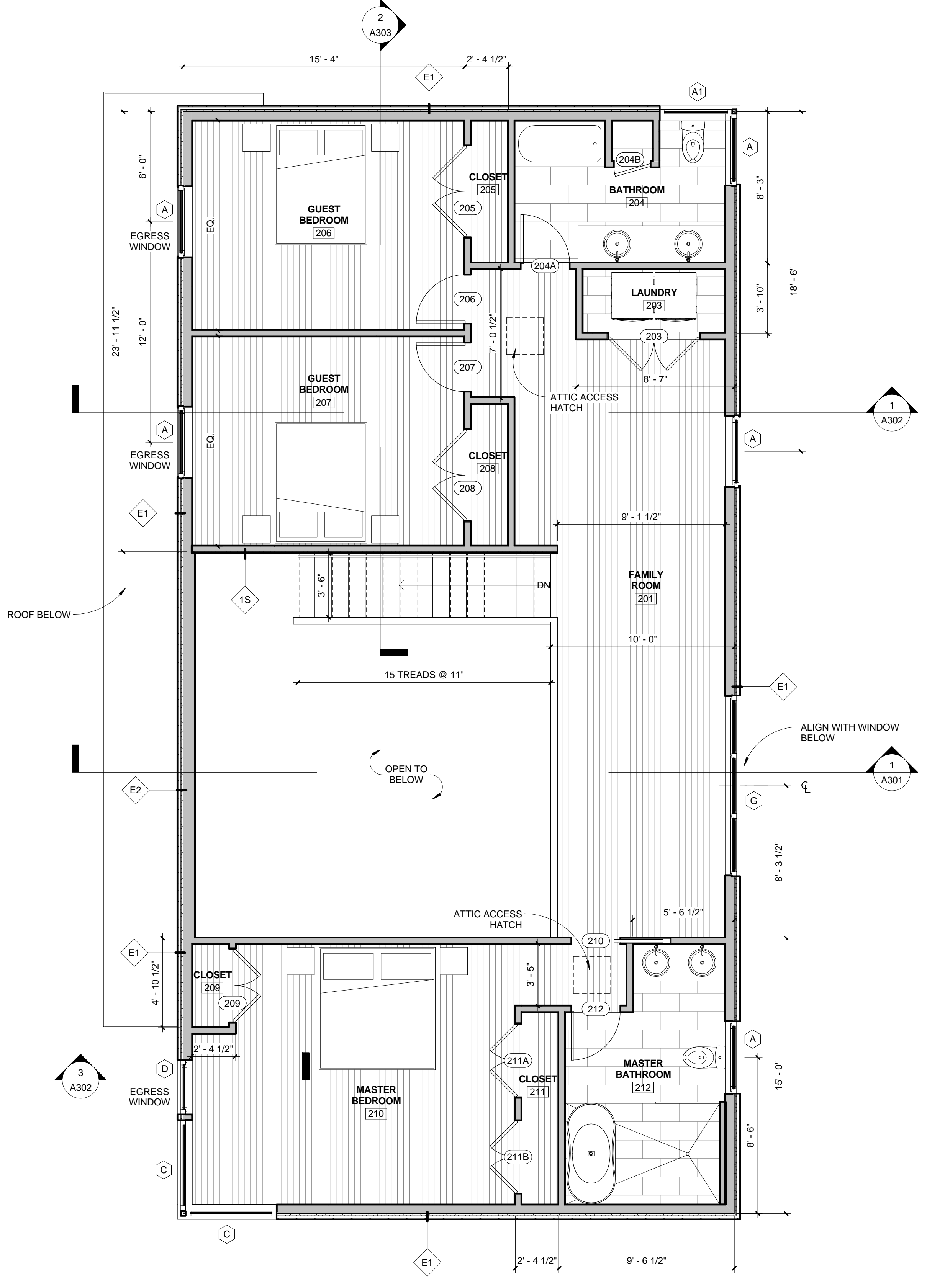
WALL TYPES  
1 1/2" = 1'-0"



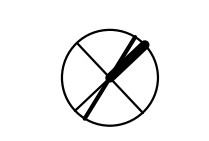
1 BASEMENT PLAN  
1/4" = 1'-0"



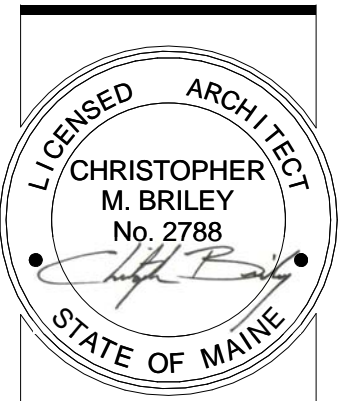
**1 FIRST FLOOR PLAN**  
1/4" = 1'-0"



**2 SECOND FLOOR PLAN**  
1/4" = 1'-0"







**PRADO-LENGUA RESIDENCE**  
50 FERNALD STREET, PORTLAND, MAINE



CONSULTANTS:

REVISIONS:

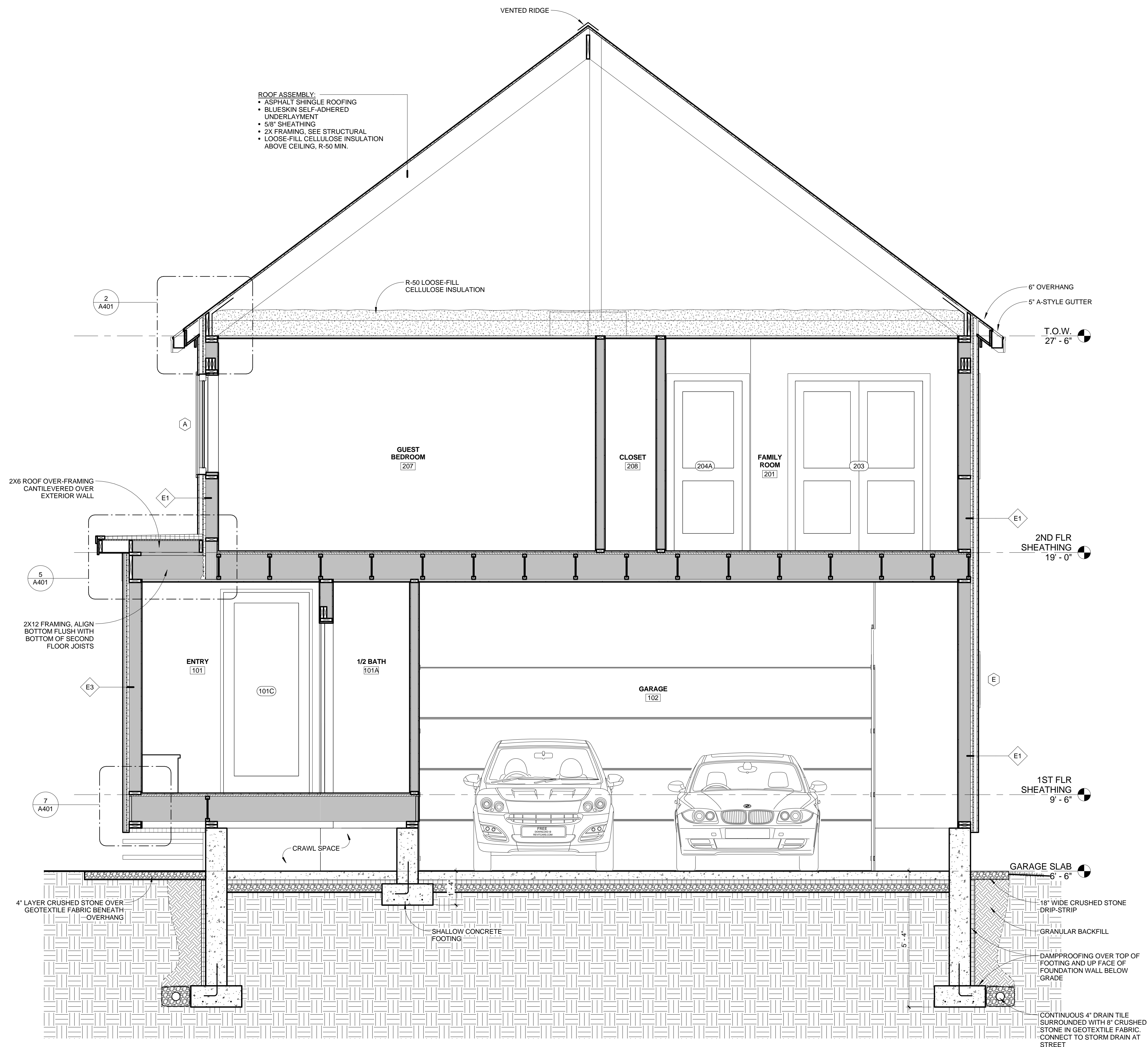
ISSUED: 06/05/15  
PROJECT No: 1504  
DRAWN BY: RIP  
CHECKED BY: CMB  
SHEET TITLE:  
EXTERIOR ELEVATIONS

**A201**

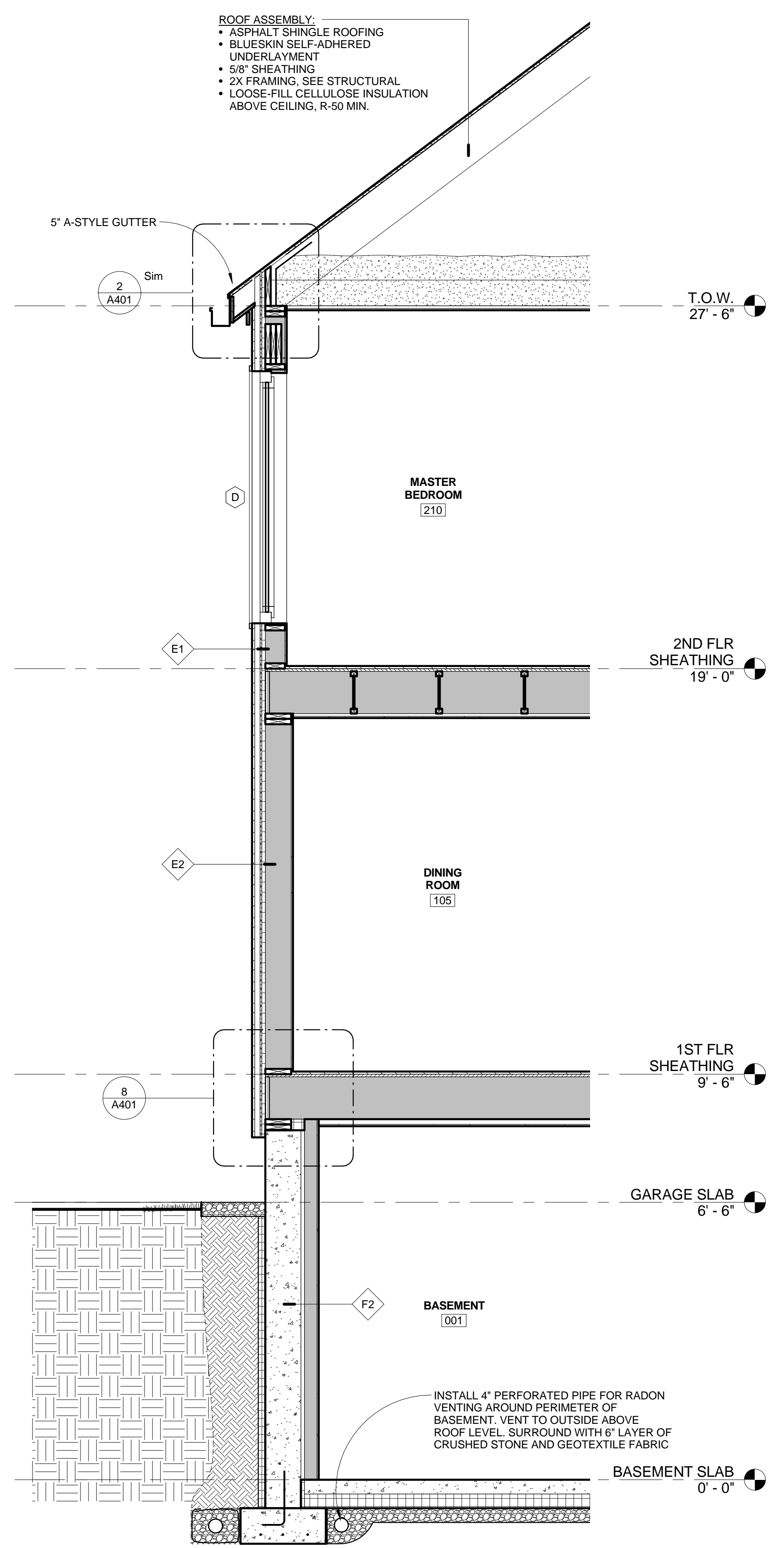




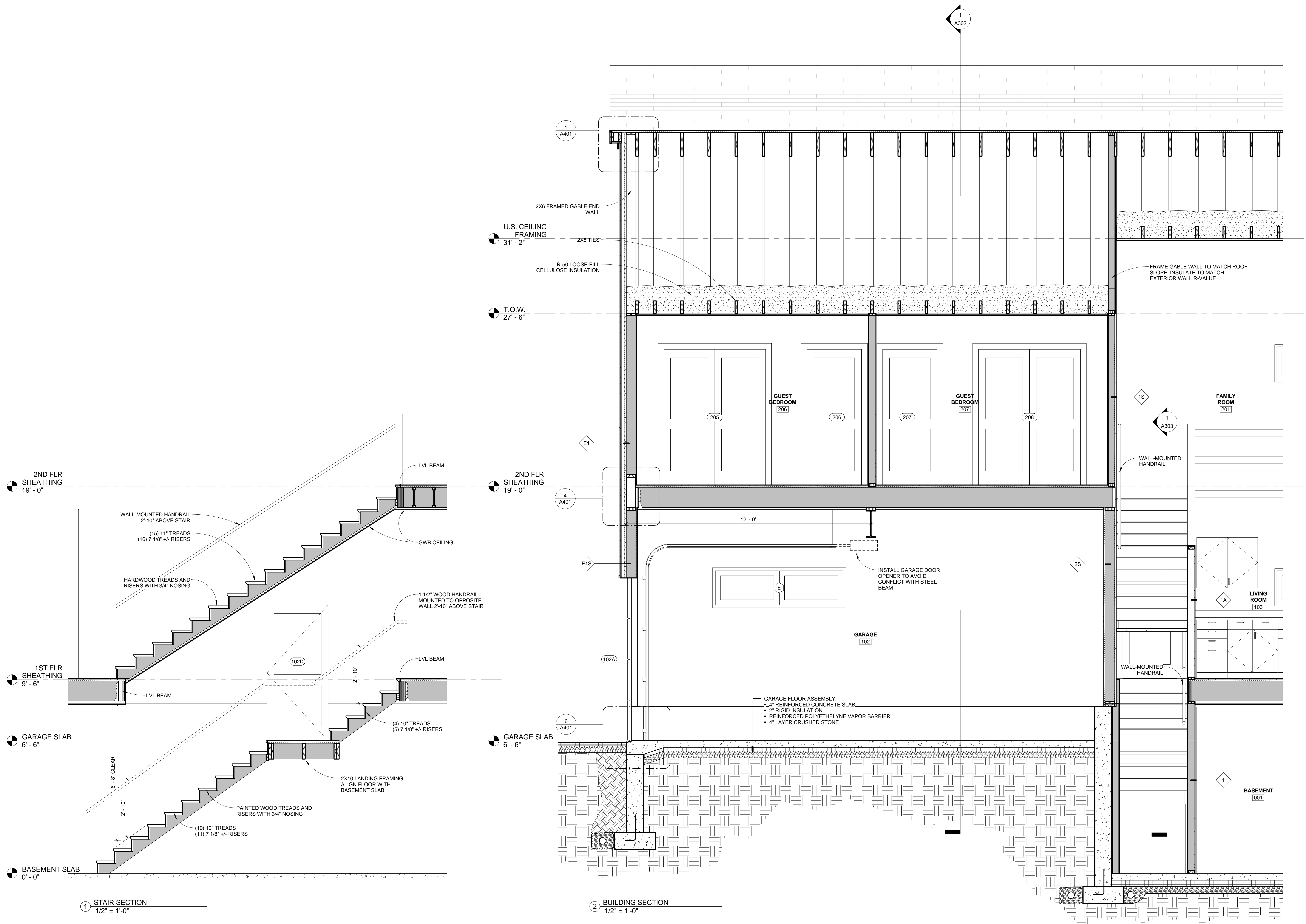




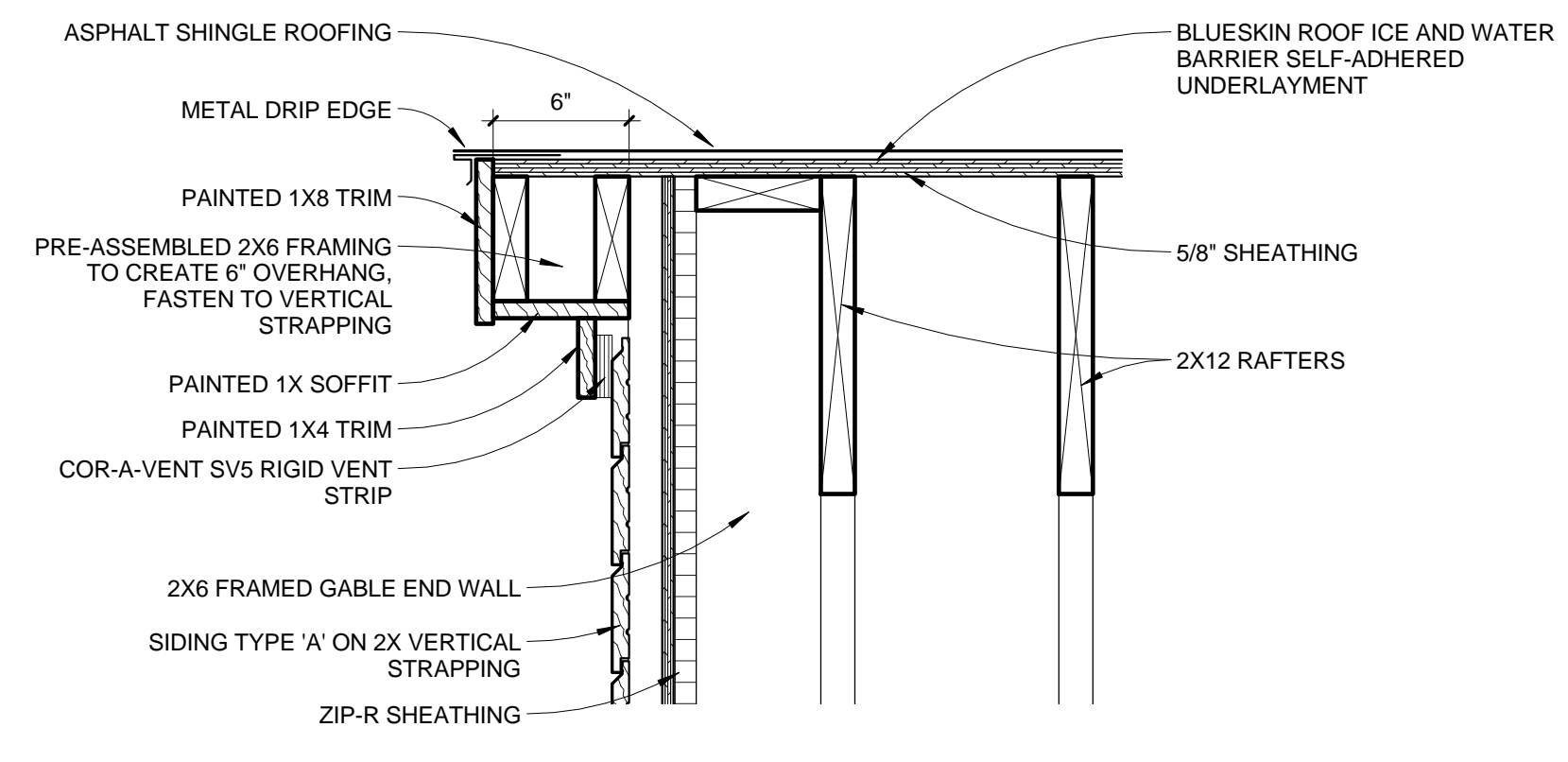
1 BUILDING SECTION  
1/2" = 1'-0"



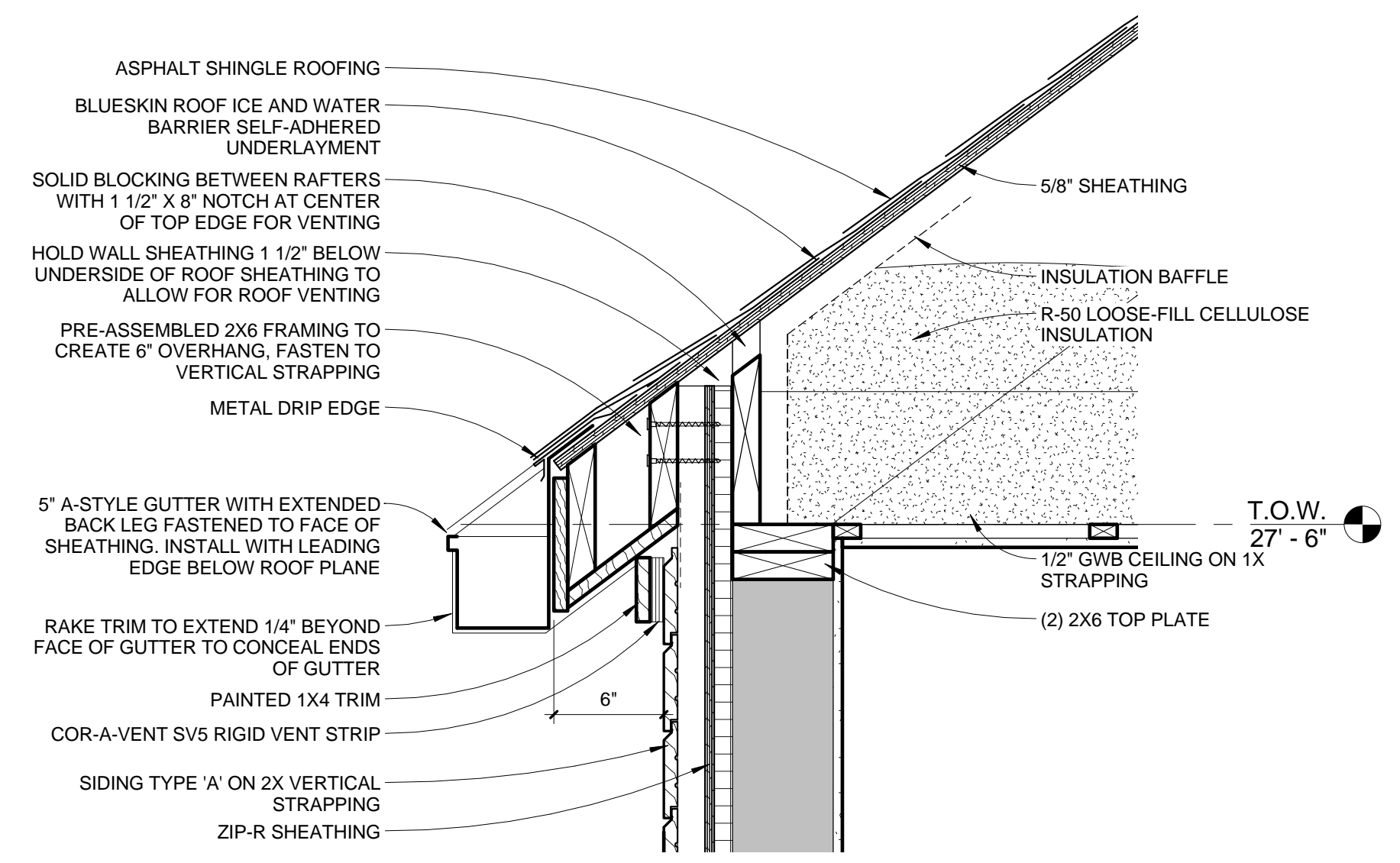
3 BUILDING SECTION  
1/2" = 1'-0"



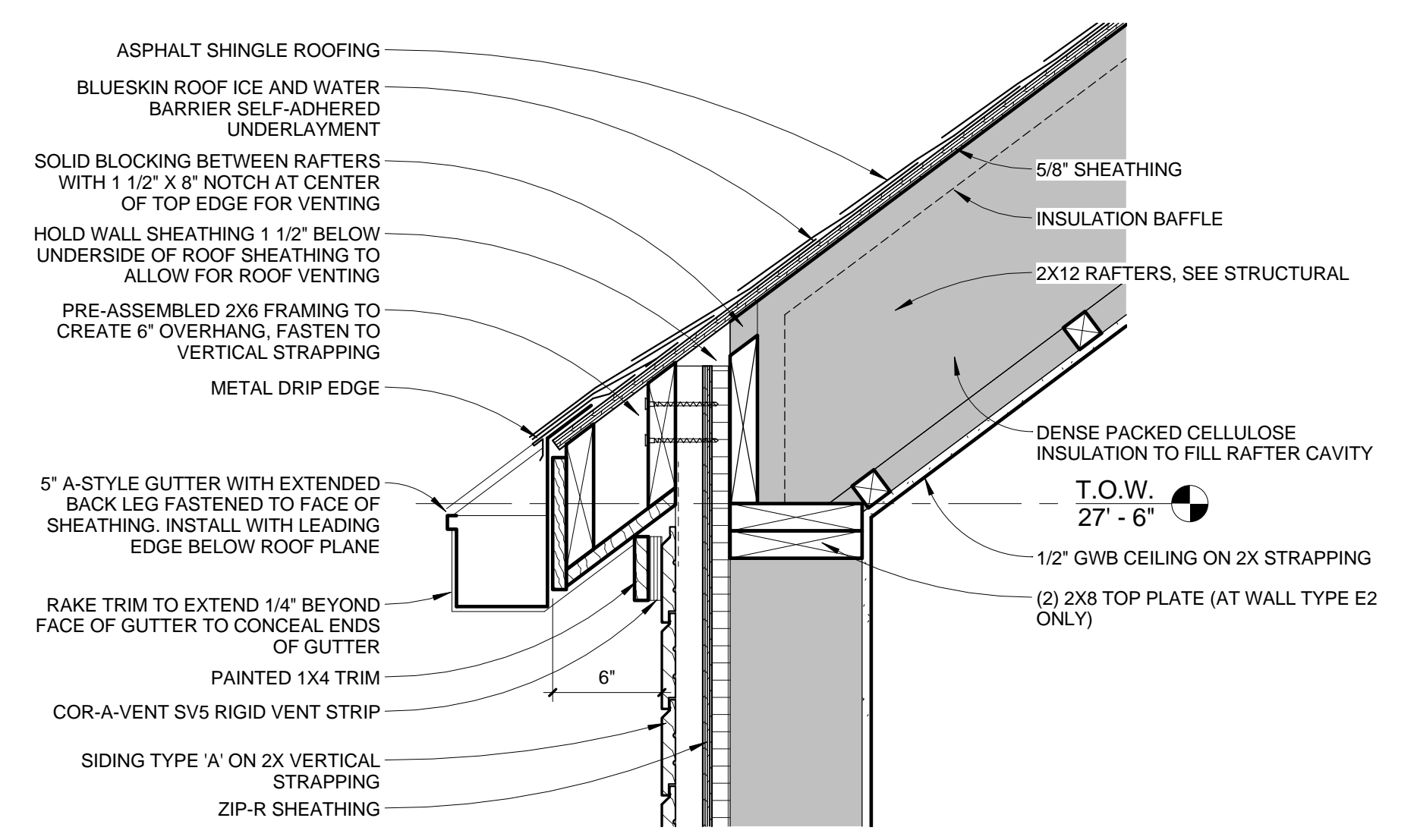




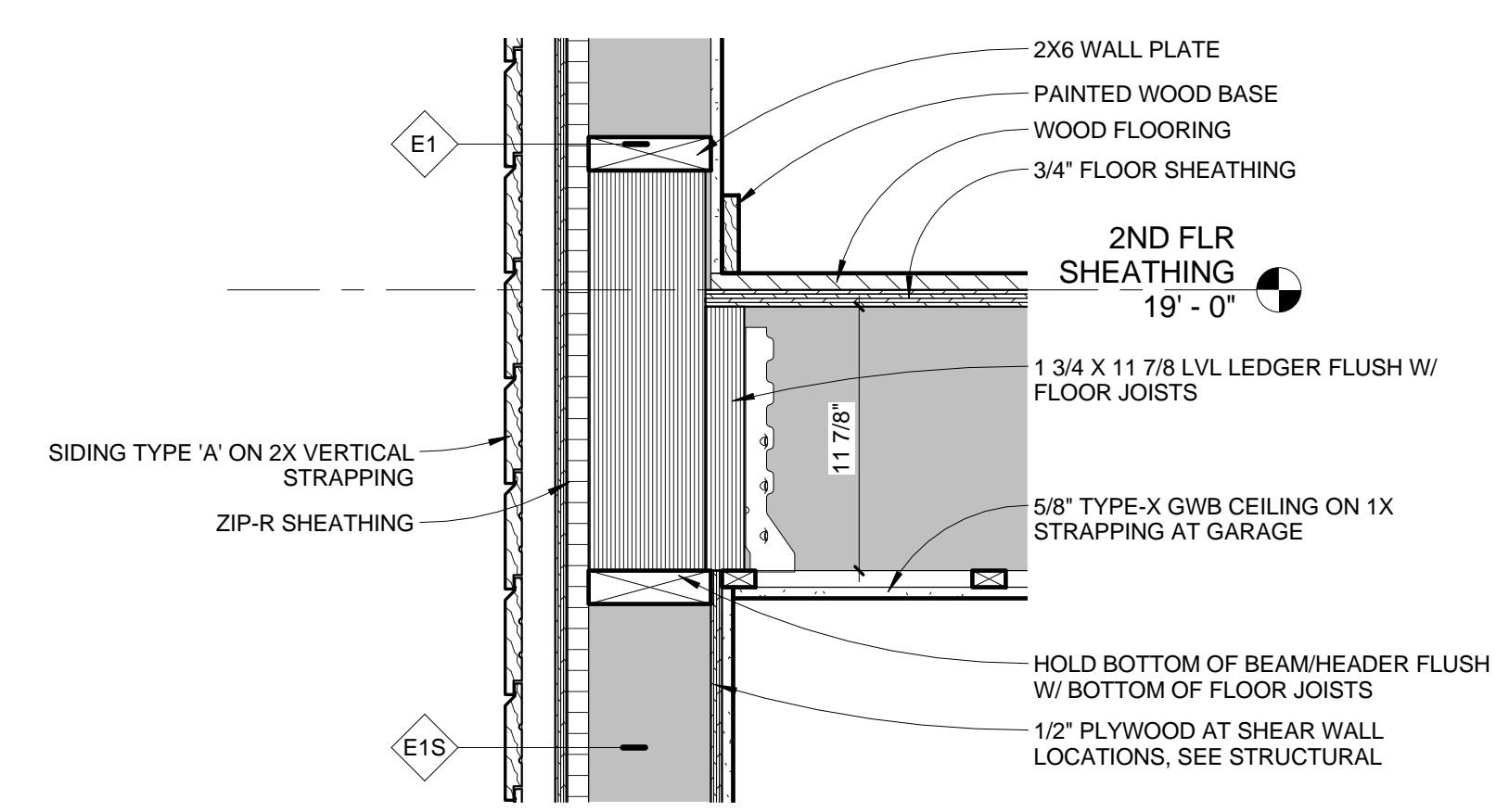
1 DETAIL - ROOF RAKE  
1 1/2" = 1'-0"



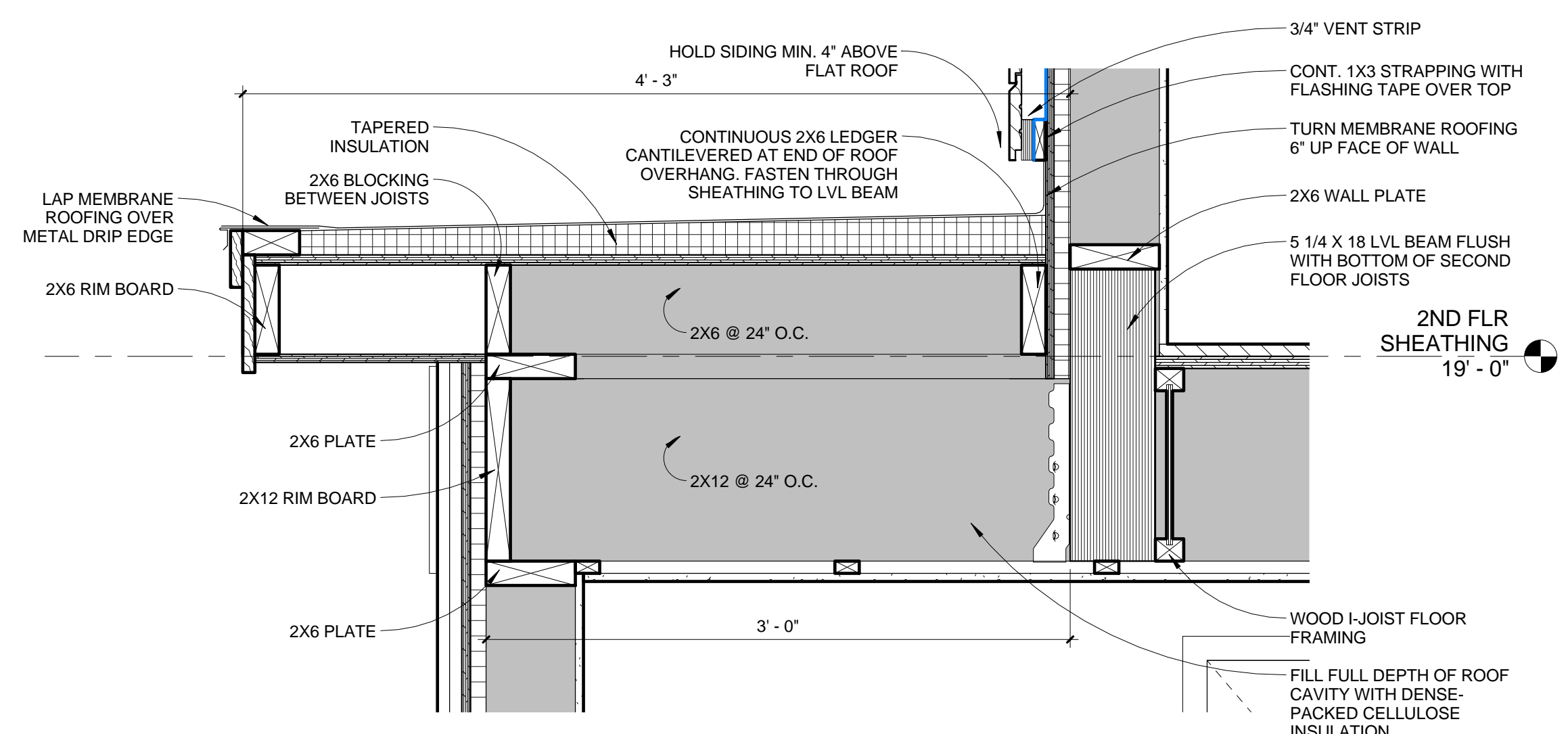
2 DETAIL - EAVE AT TRUSS ROOF  
1 1/2" = 1'-0"



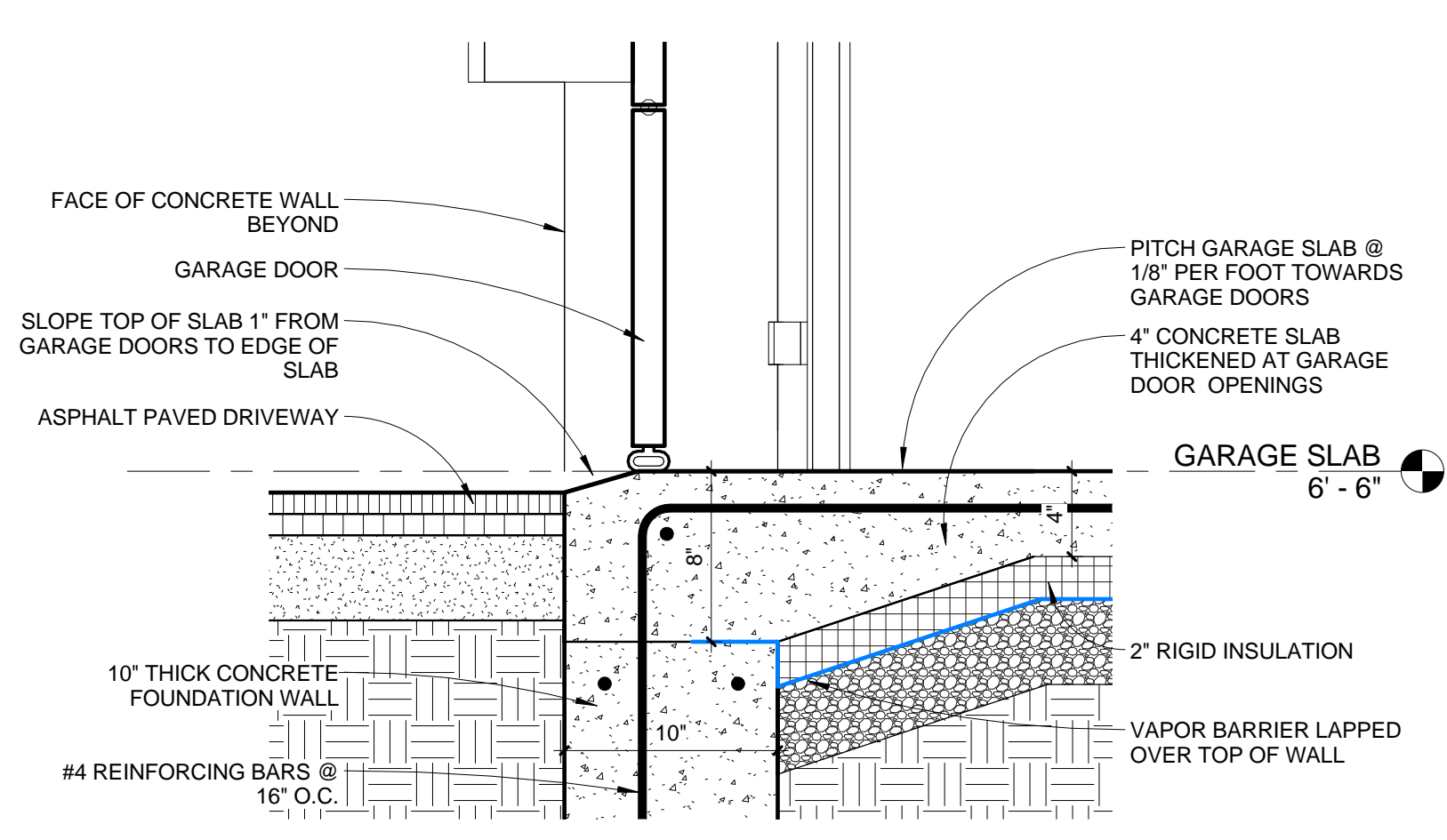
3 DETAIL - EAVE AT RAFTER ROOF  
1 1/2" = 1'-0"



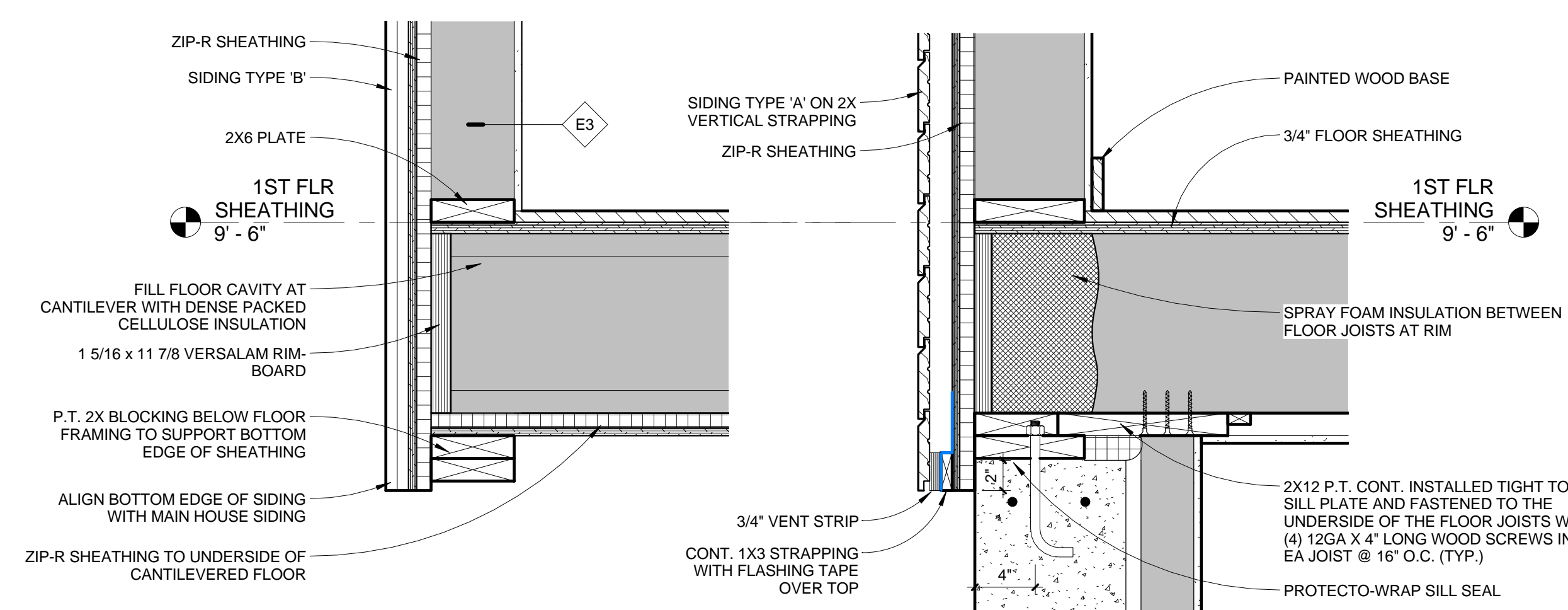
4 DETAIL - FLOOR EDGE BEAM  
1 1/2" = 1'-0"



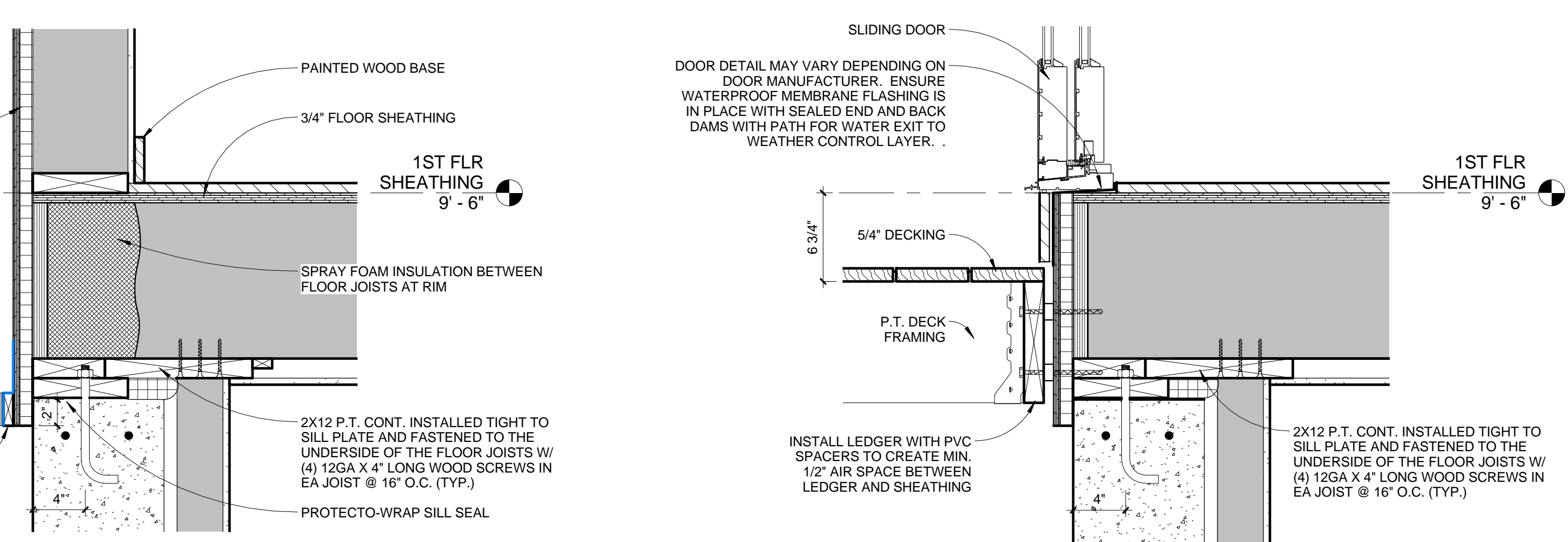
5 DETAIL - FLAT ROOF  
1 1/2" = 1'-0"



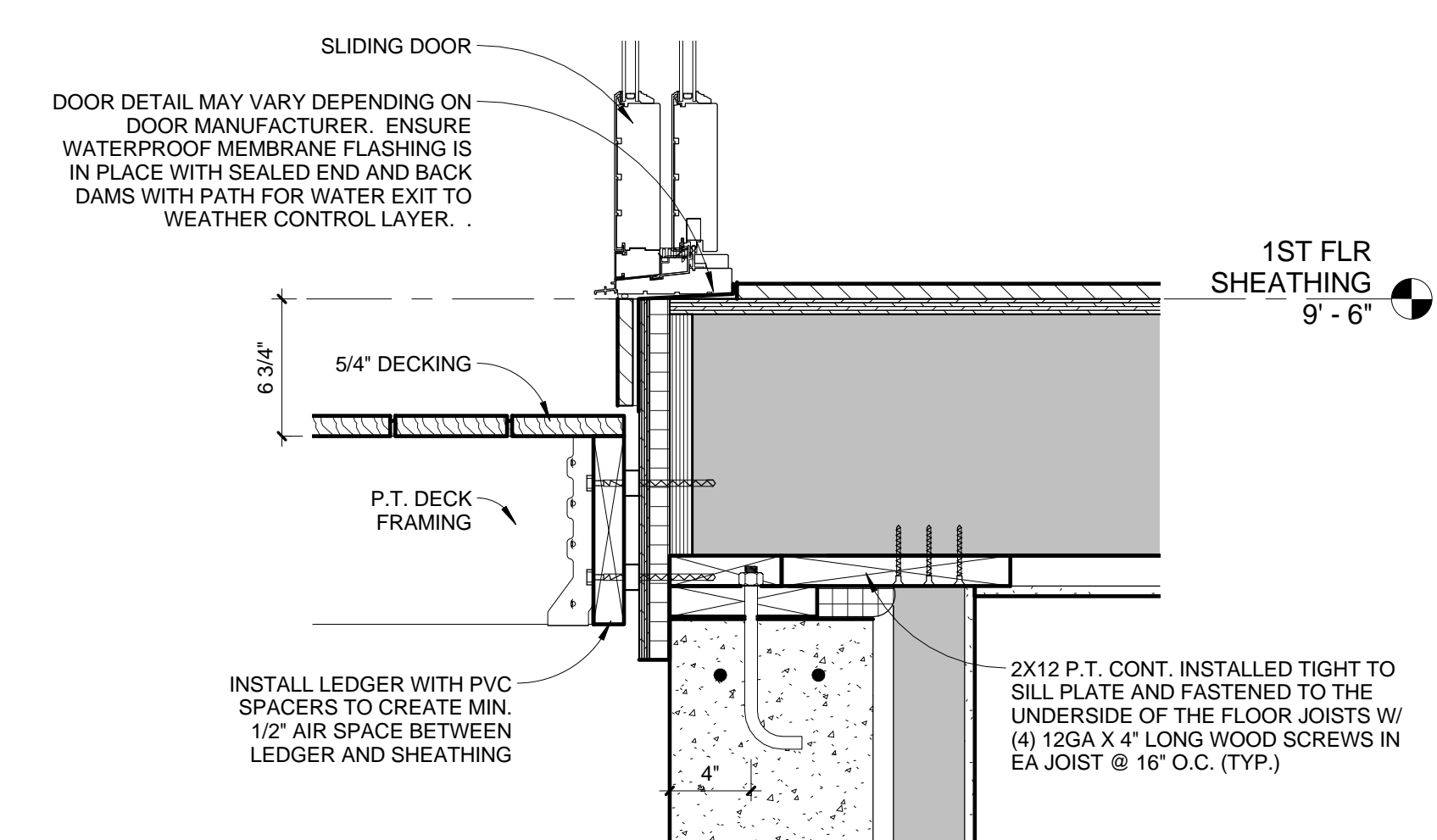
6 DETAIL - GARAGE SLAB AT DOOR  
1 1/2" = 1'-0"



7 DETAIL - CANTILEVER FLOOR  
1 1/2" = 1'-0"

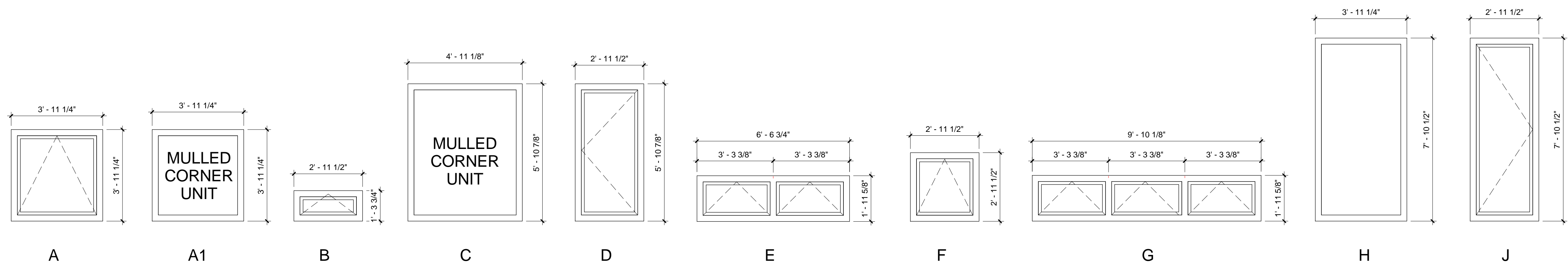


8 DETAIL - FIRST FLOOR EDGE  
1 1/2" = 1'-0"



9 DETAIL - FIRST FLOOR EDGE - DOOR  
1 1/2" = 1'-0"

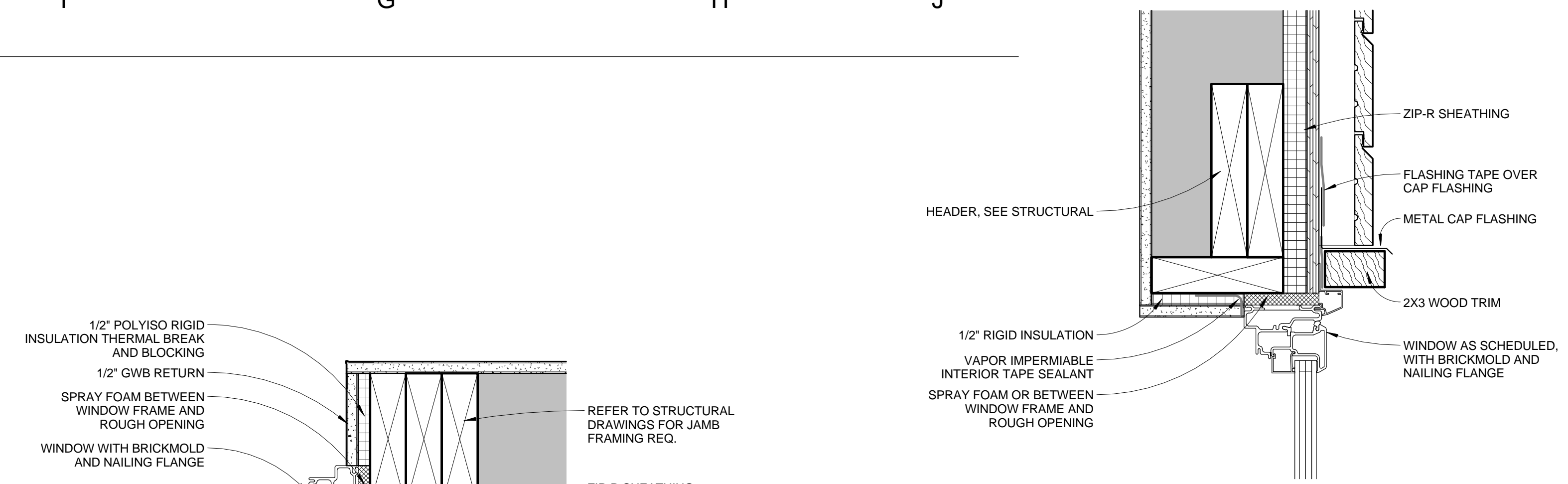




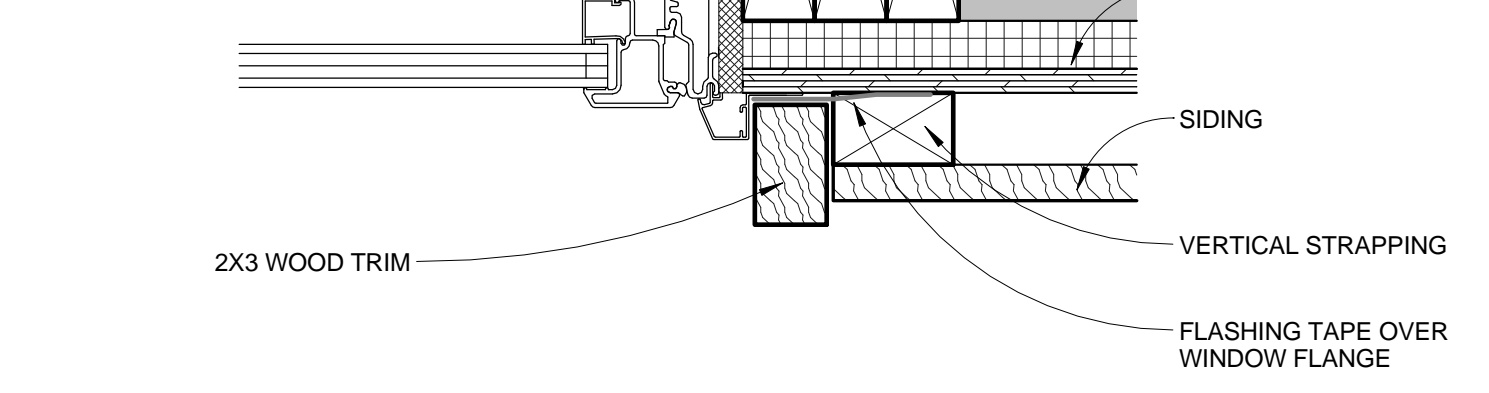
WINDOW LEGEND  
3/8" = 1'-0"

WINDOW SCHEDULE					
TYPE	UNIT WIDTH	UNIT HEIGHT	COUNT	OPERATION	NOTES
A	3' - 11 1/4"	3' - 11 1/4"	8	AWNING	EGRESS WINDOW
A1	3' - 11 1/4"	3' - 11 1/4"	1	FIXED	MULLED CORNER UNIT
B	2' - 11 7/16"	1' - 3 3/4"	1	AWNING	
C	4' - 11 1/16"	5' - 10 7/8"	2	FIXED	MULLED CORNER UNIT
D	2' - 11 7/16"	5' - 10 7/8"	1	CASEMENT	EGRESS WINDOW
E	6' - 6 3/4"	1' - 11 5/8"	1	AWNING	
F	2' - 11 7/16"	2' - 11 7/16"	1	AWNING	EGRESS WINDOW
G	9' - 10 1/8"	1' - 11 5/8"	2	AWNING	
H	3' - 11 1/4"	7' - 10 1/2"	1	FIXED	
J	2' - 11 7/16"	7' - 10 1/2"	2	FIXED	

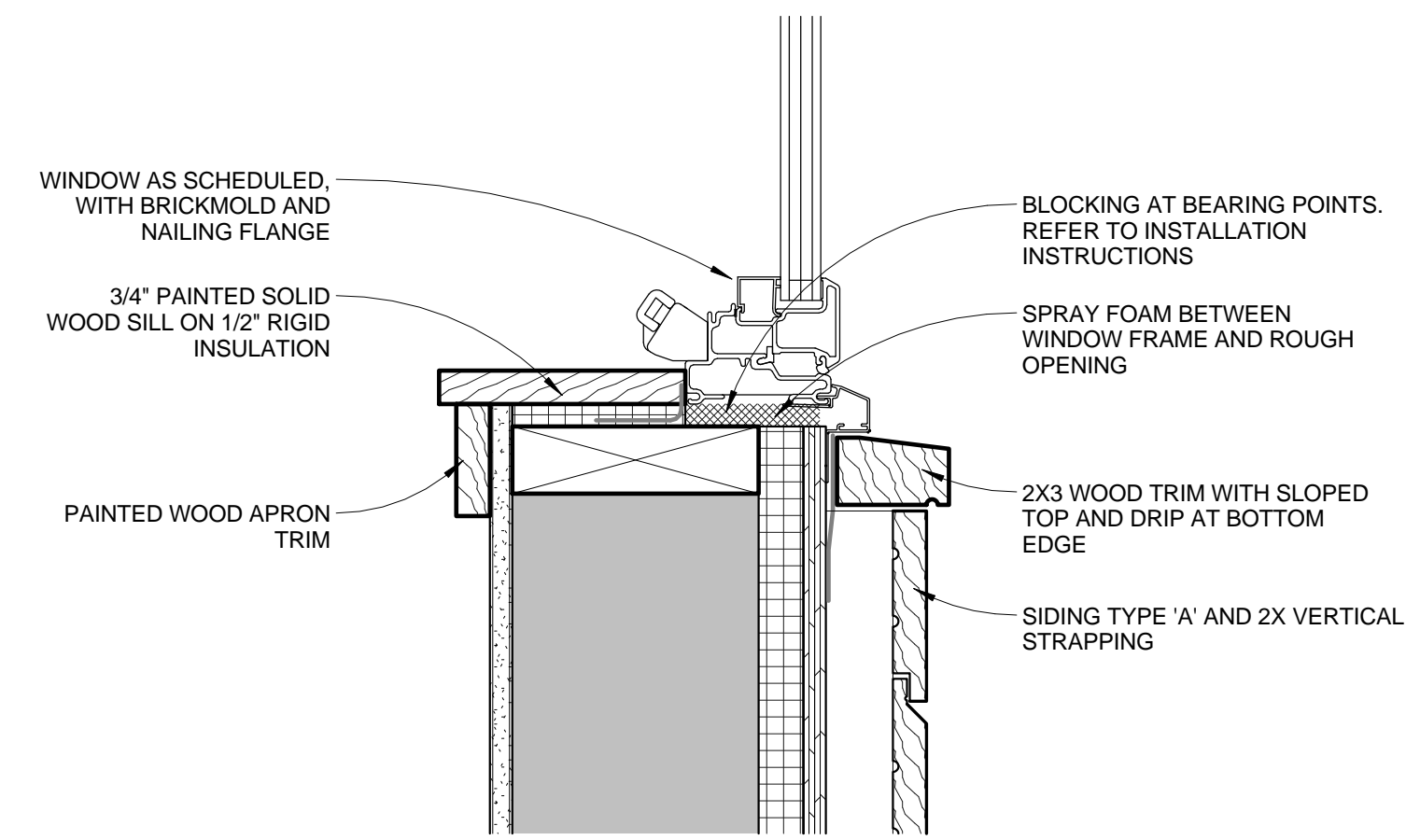
WINDOWS BASED ON LOEWEN ALUMINUM-CLAD WOOD



1 TYPICAL WINDOW HEAD DETAIL  
3" = 1'-0"

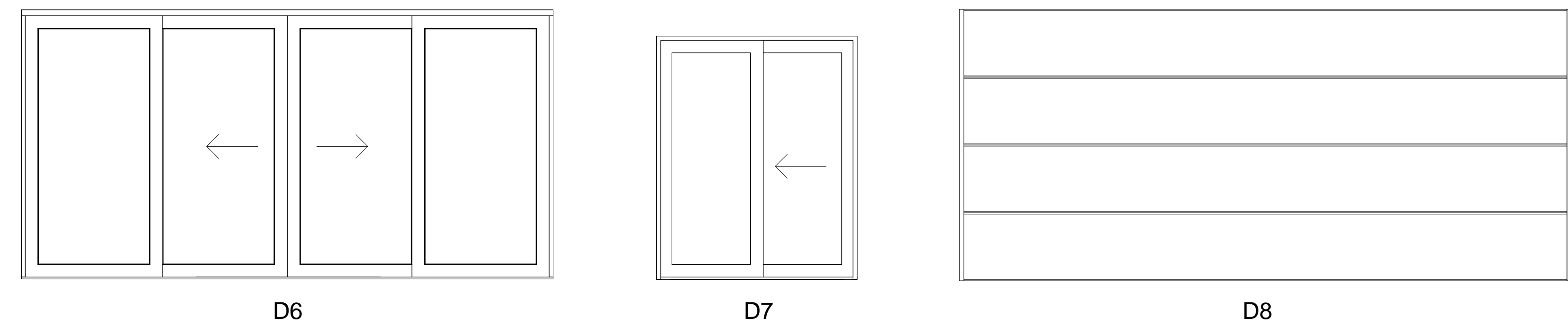
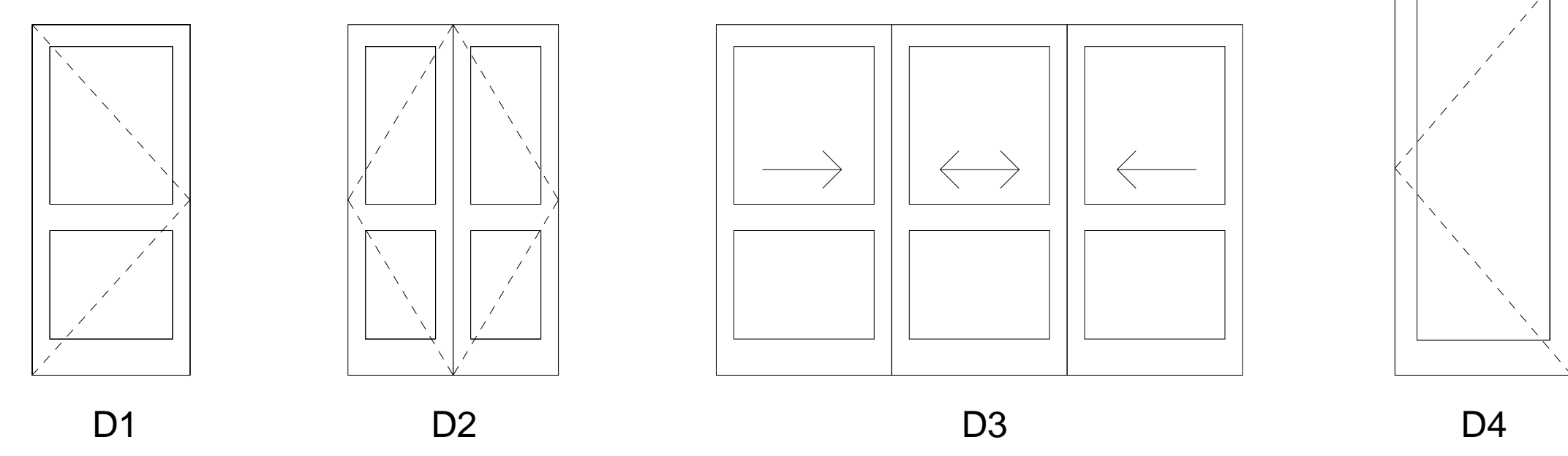


3 TYPICAL WINDOW JAMB DETAIL  
3" = 1'-0"



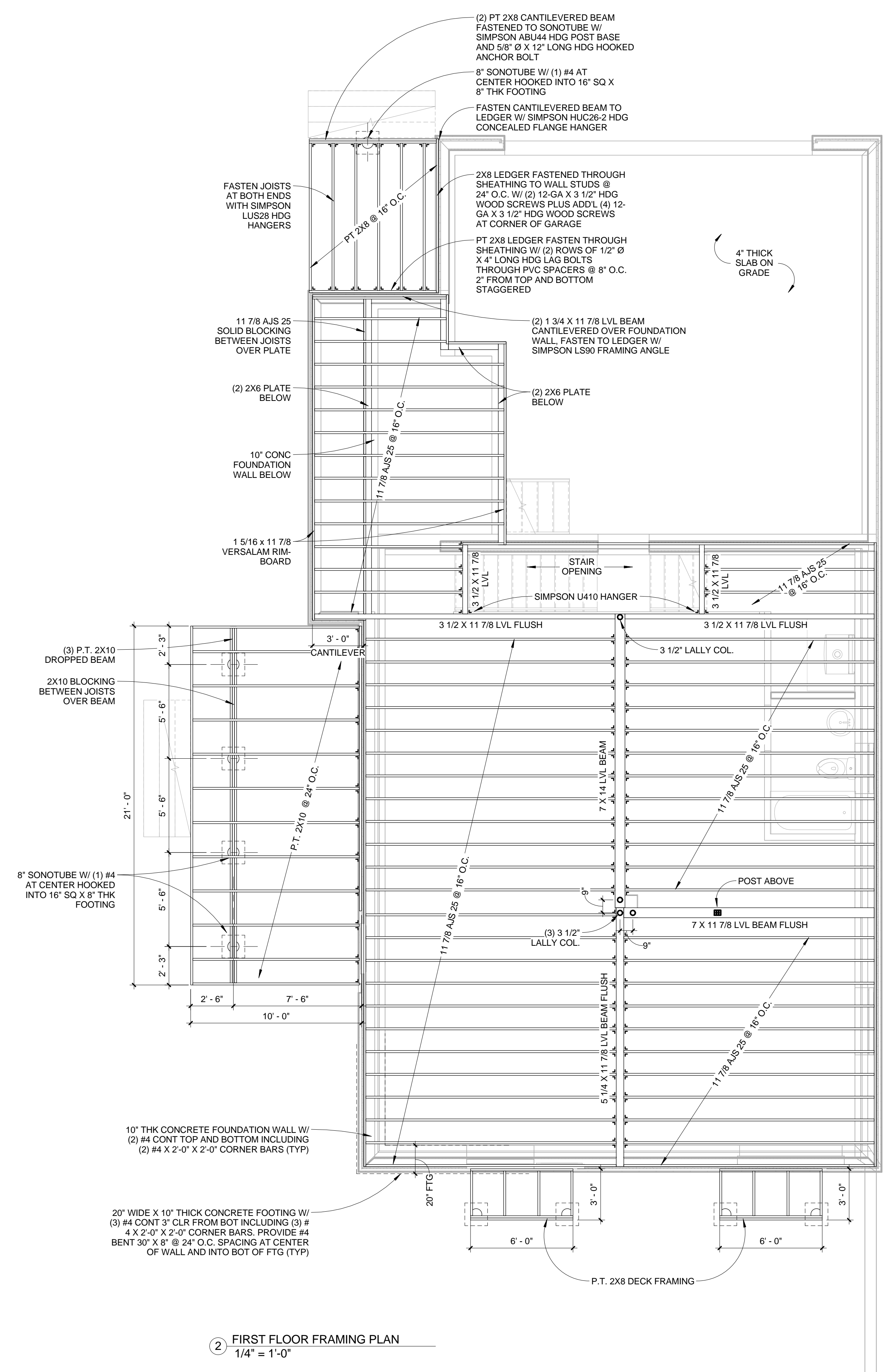
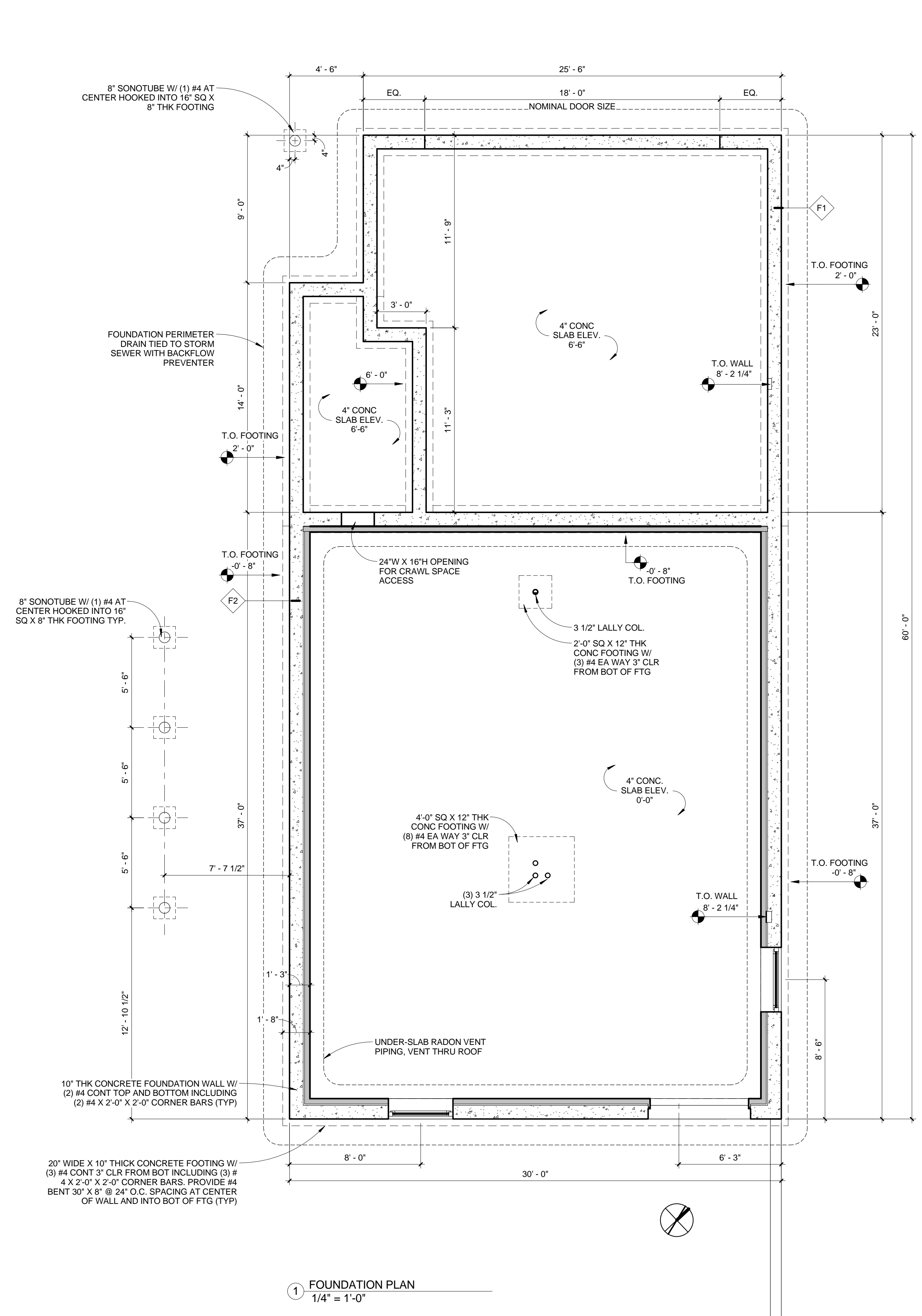
2 TYPICAL WINDOW SILL DETAIL  
3" = 1'-0"

DOOR SCHEDULE						
Mark	Type	Width	Height	Operation	Hardware	Comments
001	D7	6' - 0"	7' - 0"	SLIDING DOOR		
002	D1	3' - 0"	6' - 8"	HINGED		
003	D1	2' - 8"	6' - 8"	HINGED		
101A	D1	2' - 8"	6' - 8"	POCKET		
101B	D3	10' - 0"	6' - 8"	3-PANEL SLIDING		
101C	D4	3' - 4 5/16"	7' - 10 1/2"	HINGED		LOEWEN 1-WIDE TERRACE DOOR
102A	D8	18' - 0"	8' - 0"	OVERHEAD		
102C	D1	3' - 0"	6' - 8"	HINGED		
102D	D1	3' - 0"	6' - 8"	HINGED		
103	D6	15' - 7 11/16"	7' - 10 1/2"	DOUBLE SLIDING - OXXO		LOEWEN 4-WIDE SLIDING PATIO
104B	D1	2' - 8"	6' - 8"	HINGED		
108	D1	2' - 8"	6' - 8"	HINGED		
109A	D1	2' - 8"	6' - 8"	HINGED		
203	D2	5' - 0"	6' - 8"	HINGED DOUBLE		
204A	D1	2' - 8"	6' - 8"	HINGED		
204B	D1	2' - 0"	6' - 8"	HINGED		
205	D2	5' - 0"	6' - 8"	HINGED DOUBLE		
206	D1	2' - 8"	6' - 8"	HINGED		
207	D1	2' - 8"	6' - 8"	HINGED		
208	D2	5' - 0"	6' - 8"	HINGED DOUBLE		
209	D2	4' - 0"	6' - 8"	HINGED DOUBLE		
210	D1	2' - 8"	6' - 8"	POCKET		
211A	D2	4' - 0"	6' - 8"	HINGED DOUBLE		
211B	D2	4' - 0"	6' - 8"	HINGED DOUBLE		
212	D1	2' - 8"	6' - 8"	HINGED		

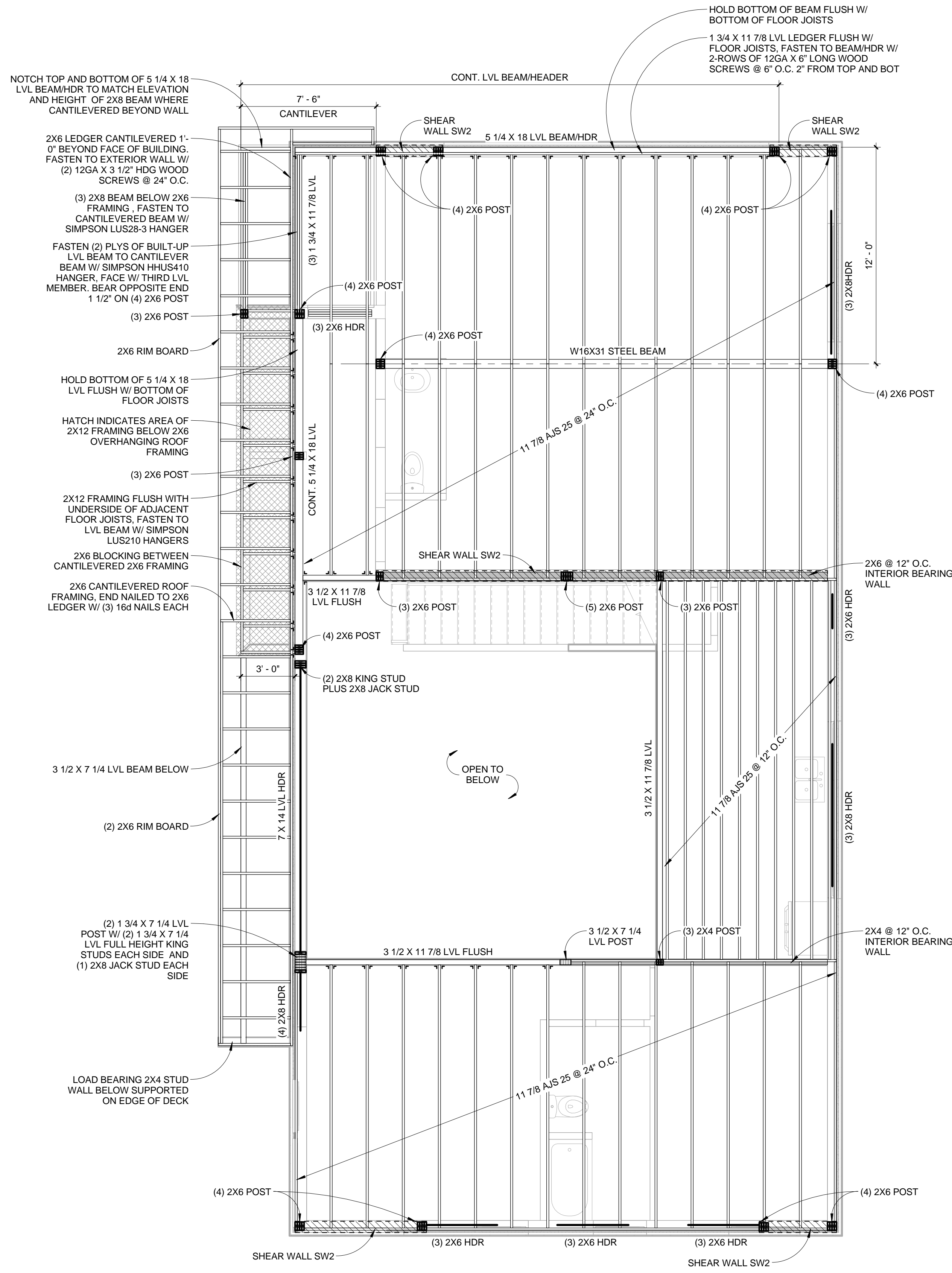


DOOR LEGEND  
3/8" = 1'-0"

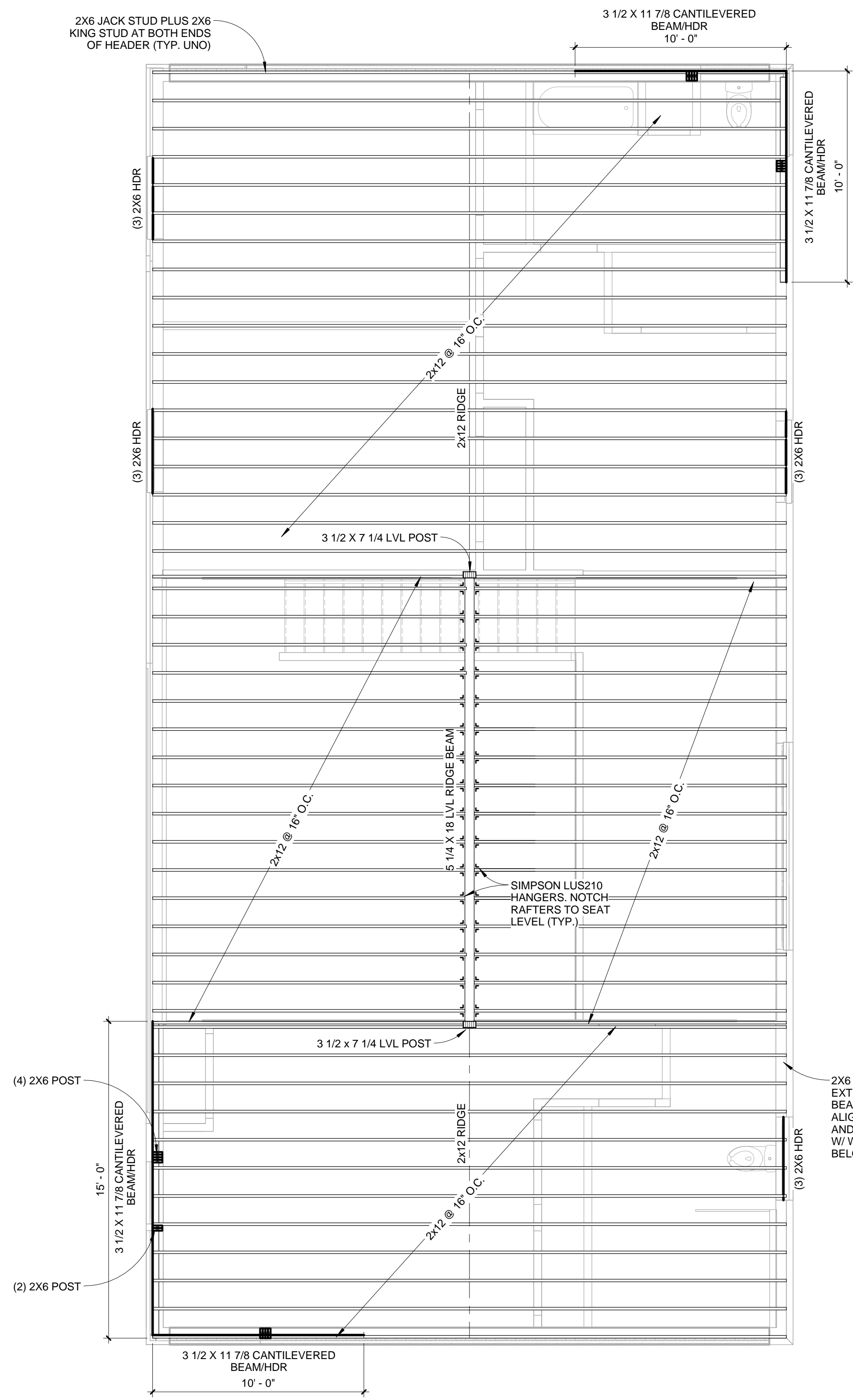




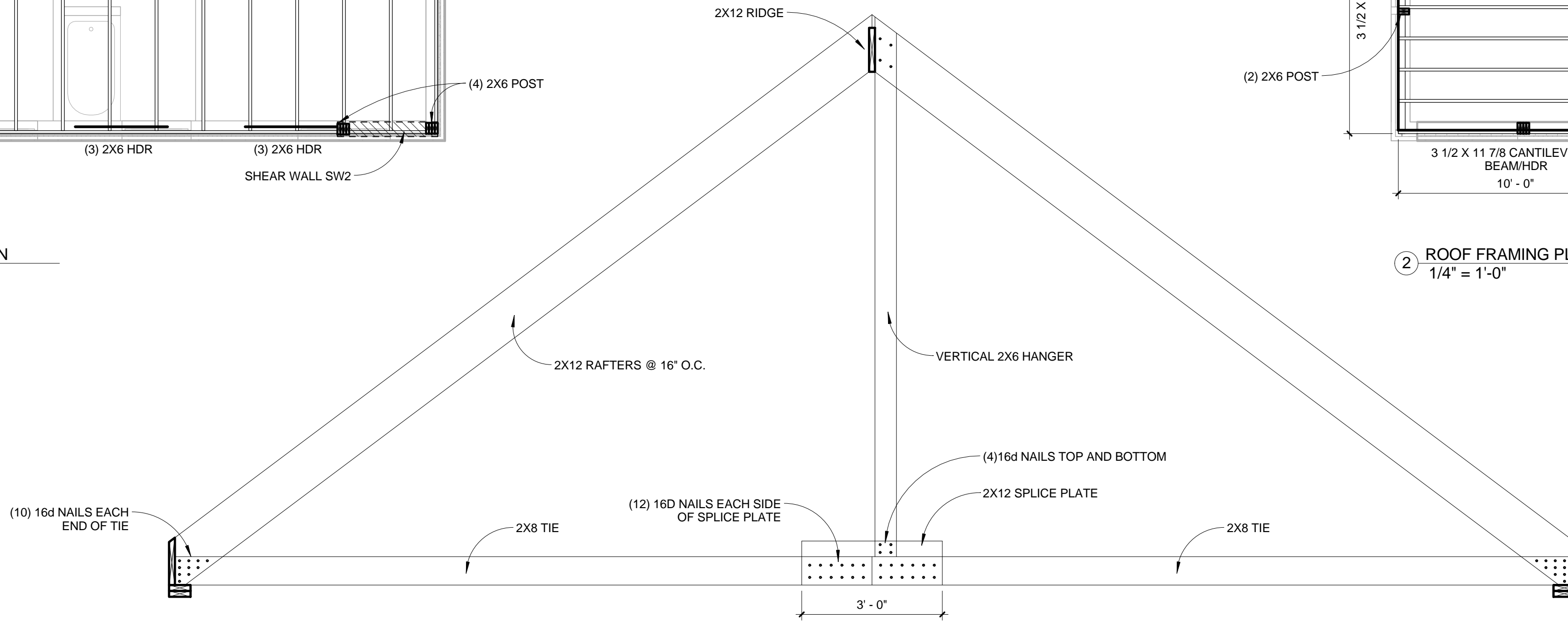




1 SECOND FLOOR FRAMING PLAN  
1/4" = 1'-0"



2 ROOF FRAMING PLAN  
1/4" = 1'-0"



3 ROOF FRAMING ELEVATION  
1/2" = 1'-0"

ROOF TRUSS LOADING	
TCLL = 45 PSF (85 PSF @ SNOW DRIFT)	
TCCL = 10 PSF	
BCCL = 0 PSF	
BCDL = 10 PSF	
<ul style="list-style-type: none"> <li>MAX PERMISSIBLE LIVE LOAD DEFLECTION = L/360</li> <li>FABRICATOR SHALL DESIGN TRUSSES FOR BALANCED SNOW LOADS (INDICATED ABOVE); UNBALANCED LOAD, AND WIND LOAD PER IRC 2009</li> <li>PROVIDE TEMPORARY AND PERMANENT BRACING PER HIB - LATEST PUBLISHED BY (TPI) TRUSS PLATE INSTITUTE.</li> </ul>	