

Sherwood Street Renovation
RENOVATION
 325 SHERWOOD STREET
 JOSH WOJCIK



DEXTRIOUS CREATIVE

PORTLAND, ME 04102
 TRACIE REED, ARCHITECT
 NCARB, AIA, LEED AP BD+C
 traciereed@dextrouscreative.com
 207.409.0459 (cell)

STRUCTURAL ENGINEER
 AL HOJSDOR
 RESURGENCE ENGINEERING
 61 INDIA STREET, SUITE 7
 PORTLAND, ME 04101
 AL@RESURGENCEENGINEERING.COM
 207.615.9985 (CELL)

GENERAL CONTRACTOR
 JOSH WOJCIK
 UPWRIGHT FRAMEWORKS
 PO BOX 83
 WILTON, ME 04294
 UPWRIGHTFRAMEWORKS@GMAIL.COM
 207.749.9656 (CELL)

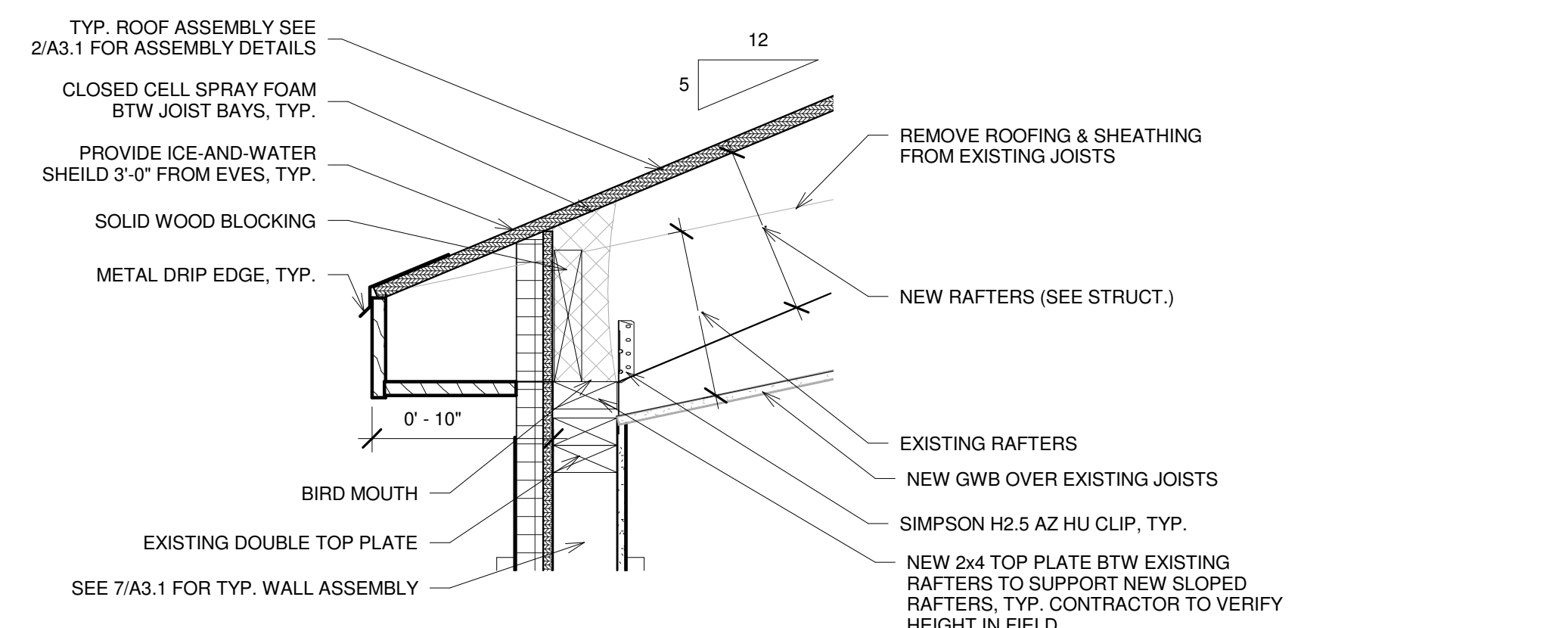
No.	Description	Date

SECTION

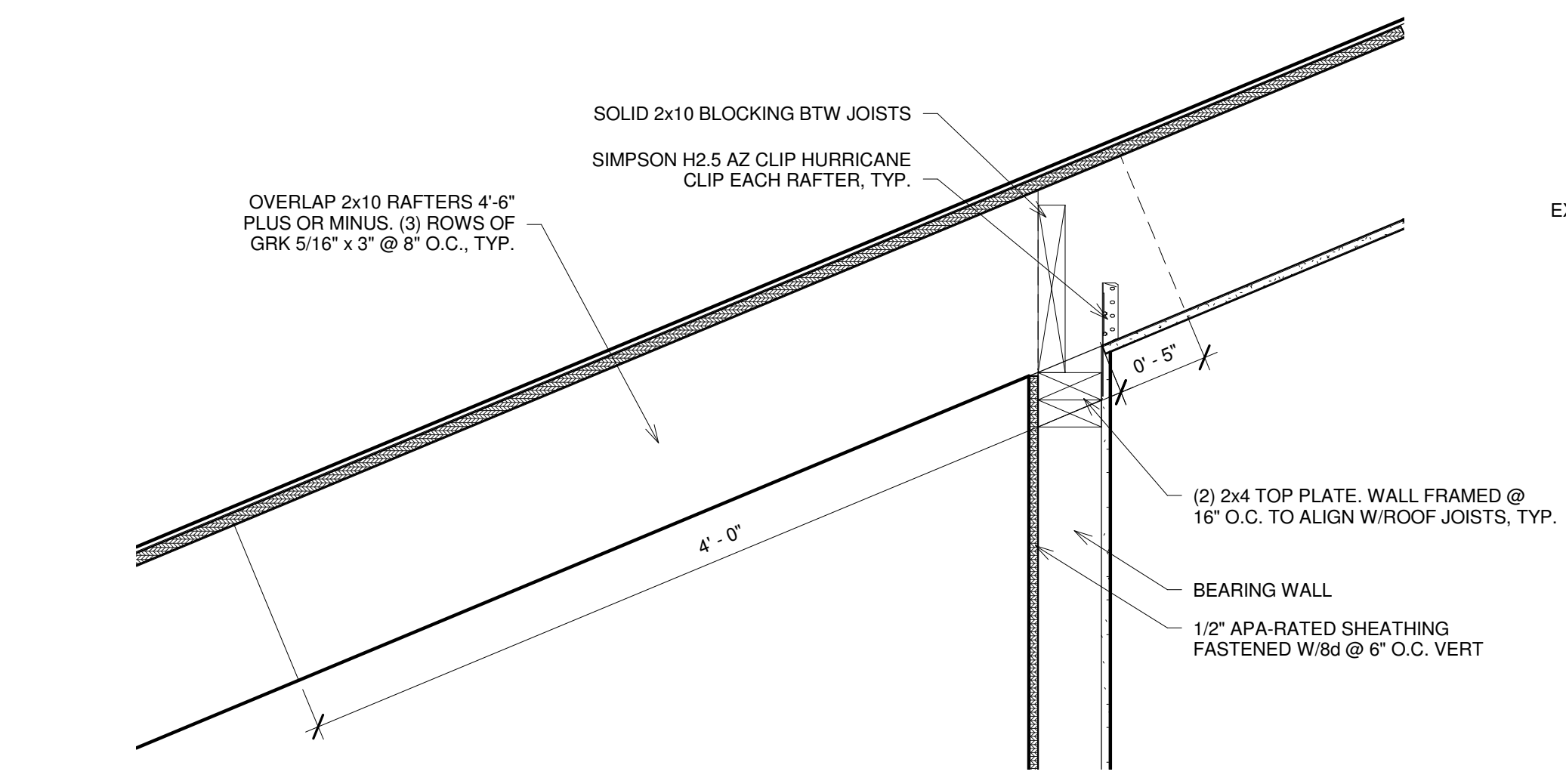
Project number 15-12
 Date 05.28.15
 Drawn by TJR
 Checked by TJR

A-3.1

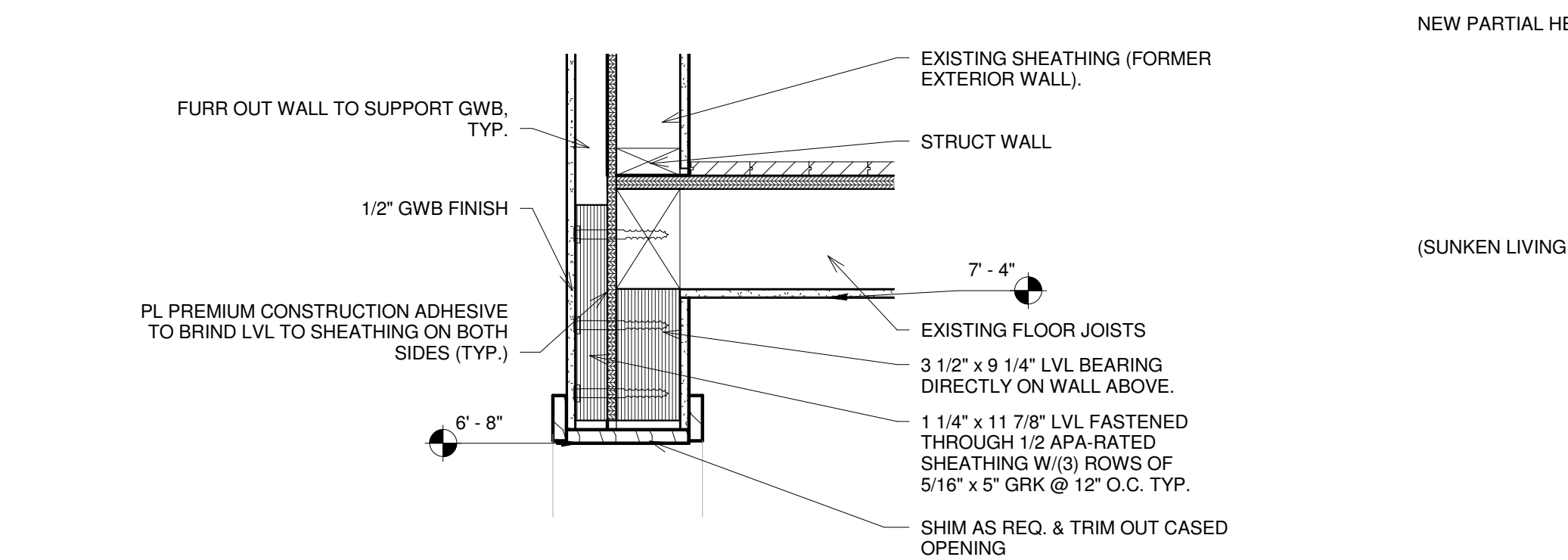
Scale As indicated



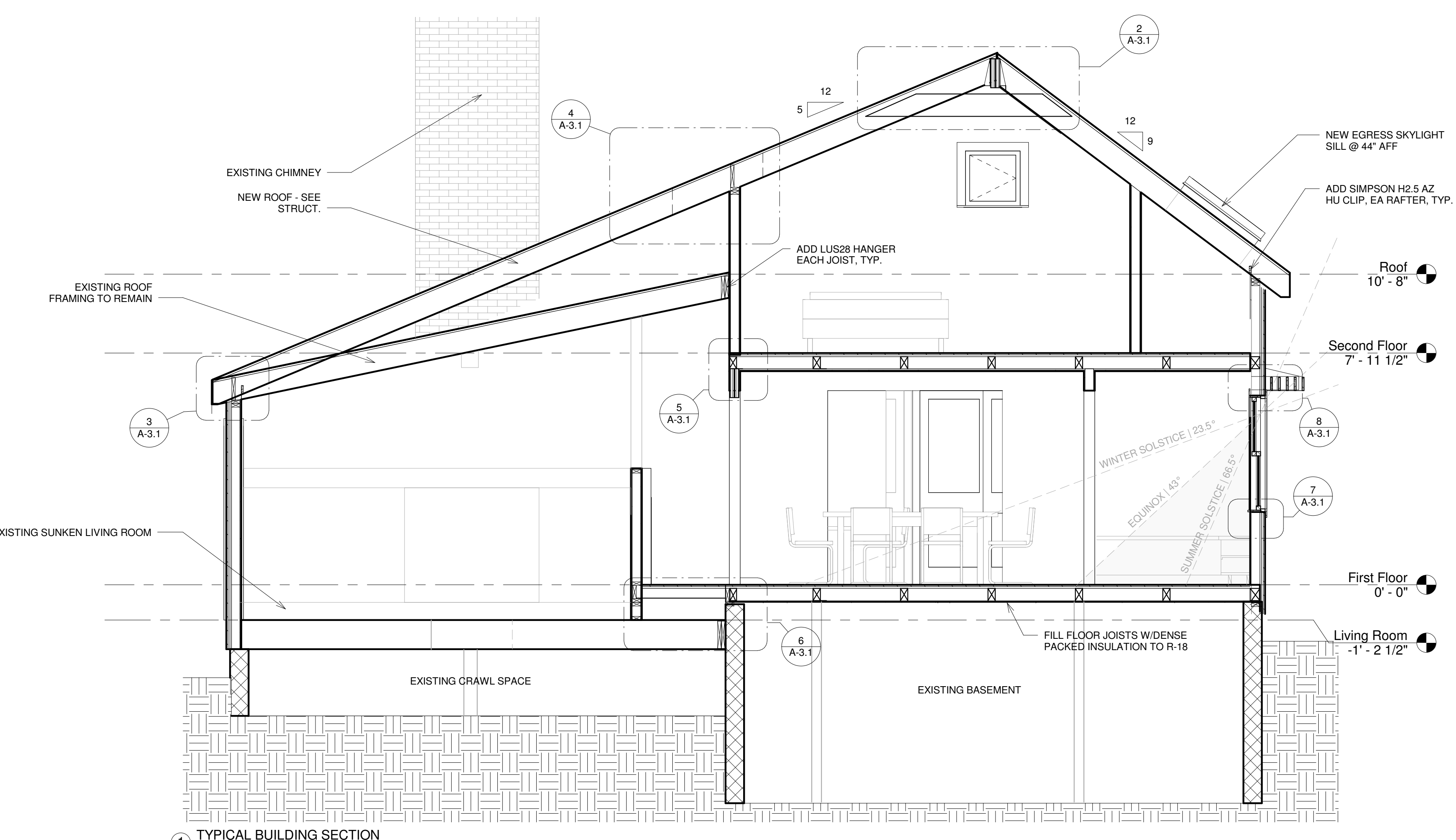
3 EVE DETAIL @ NEW ROOF
 1 1/2" = 1'-0"



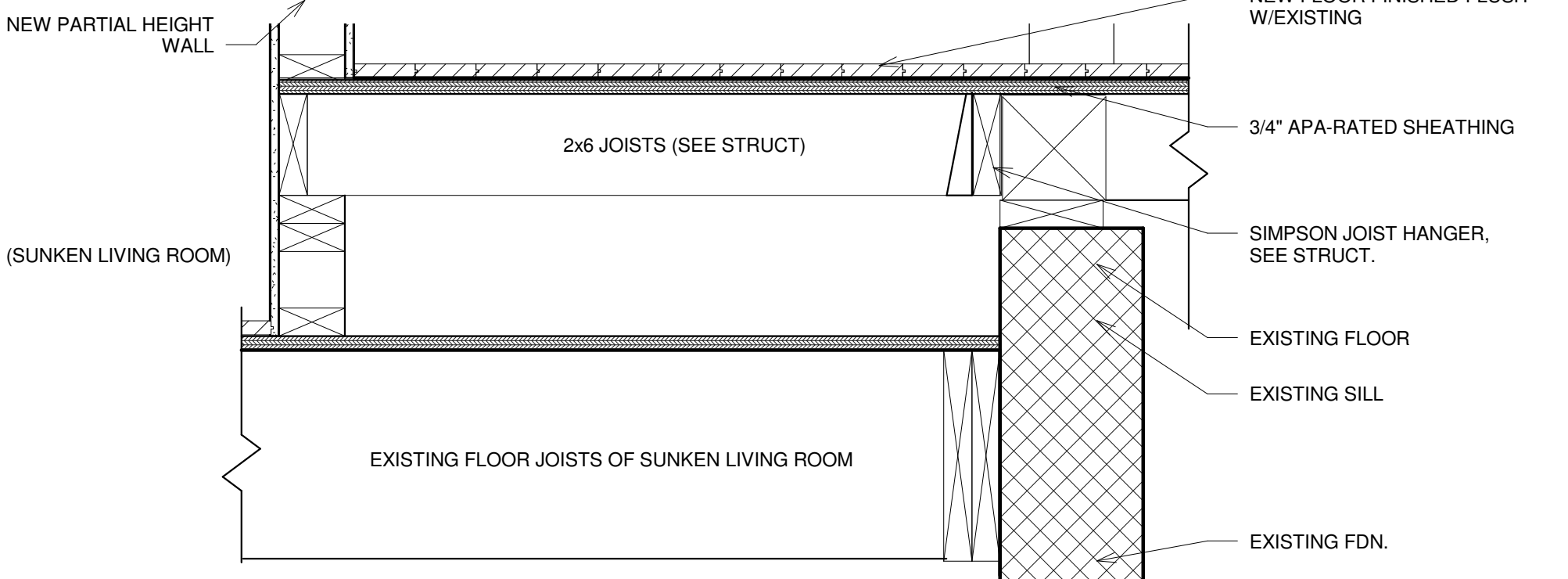
4 NEW ROOF DETAIL
 1 1/2" = 1'-0"



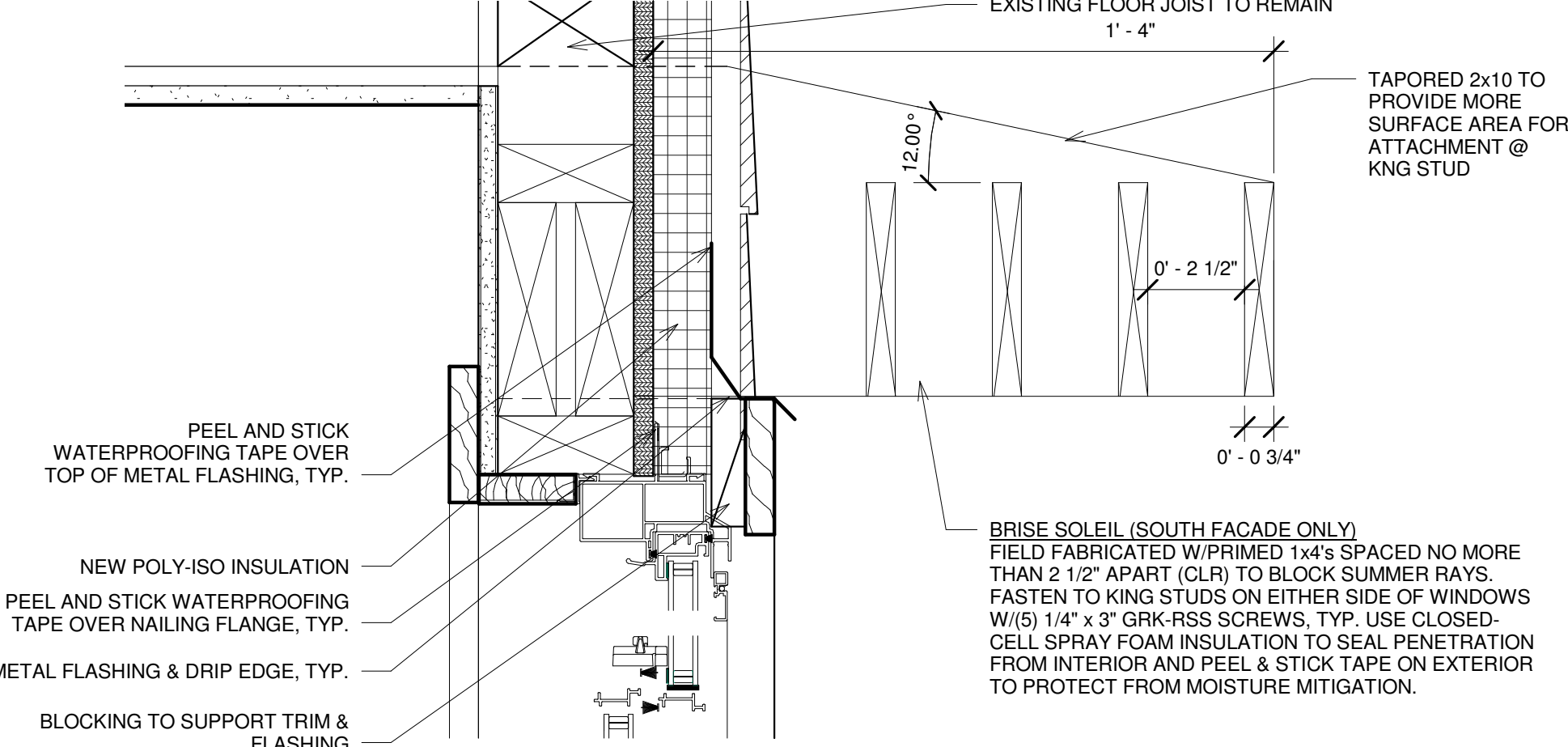
5 LVL DETAIL
 1 1/2" = 1'-0"



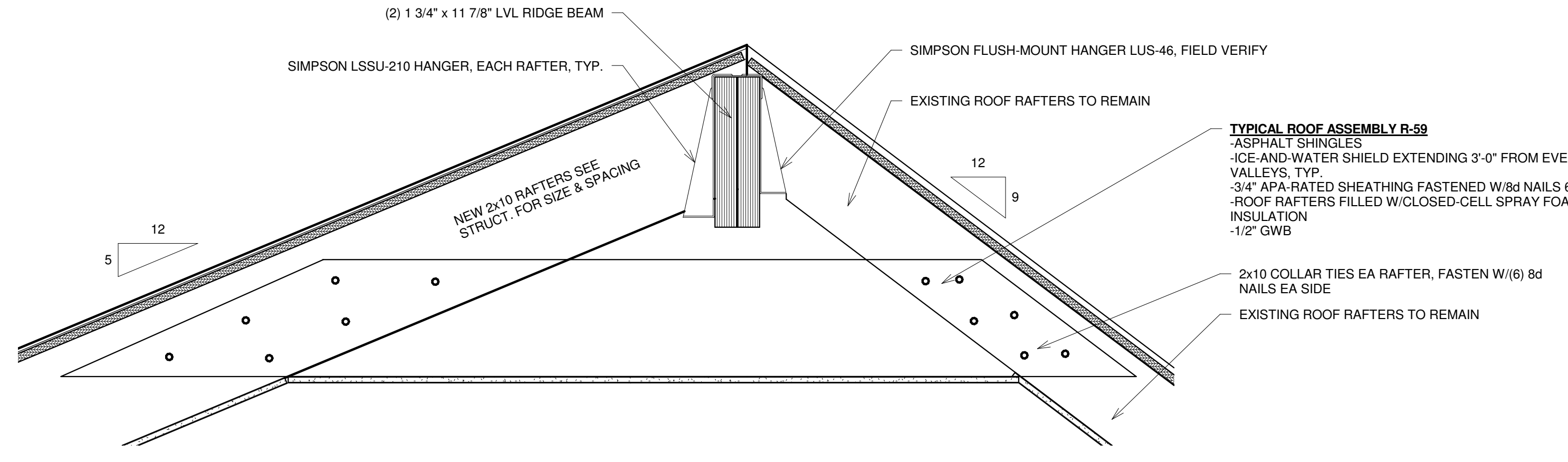
1 TYPICAL BUILDING SECTION
 3/8" = 1'-0"



6 NEW FLOOR DETAIL
 1 1/2" = 1'-0"



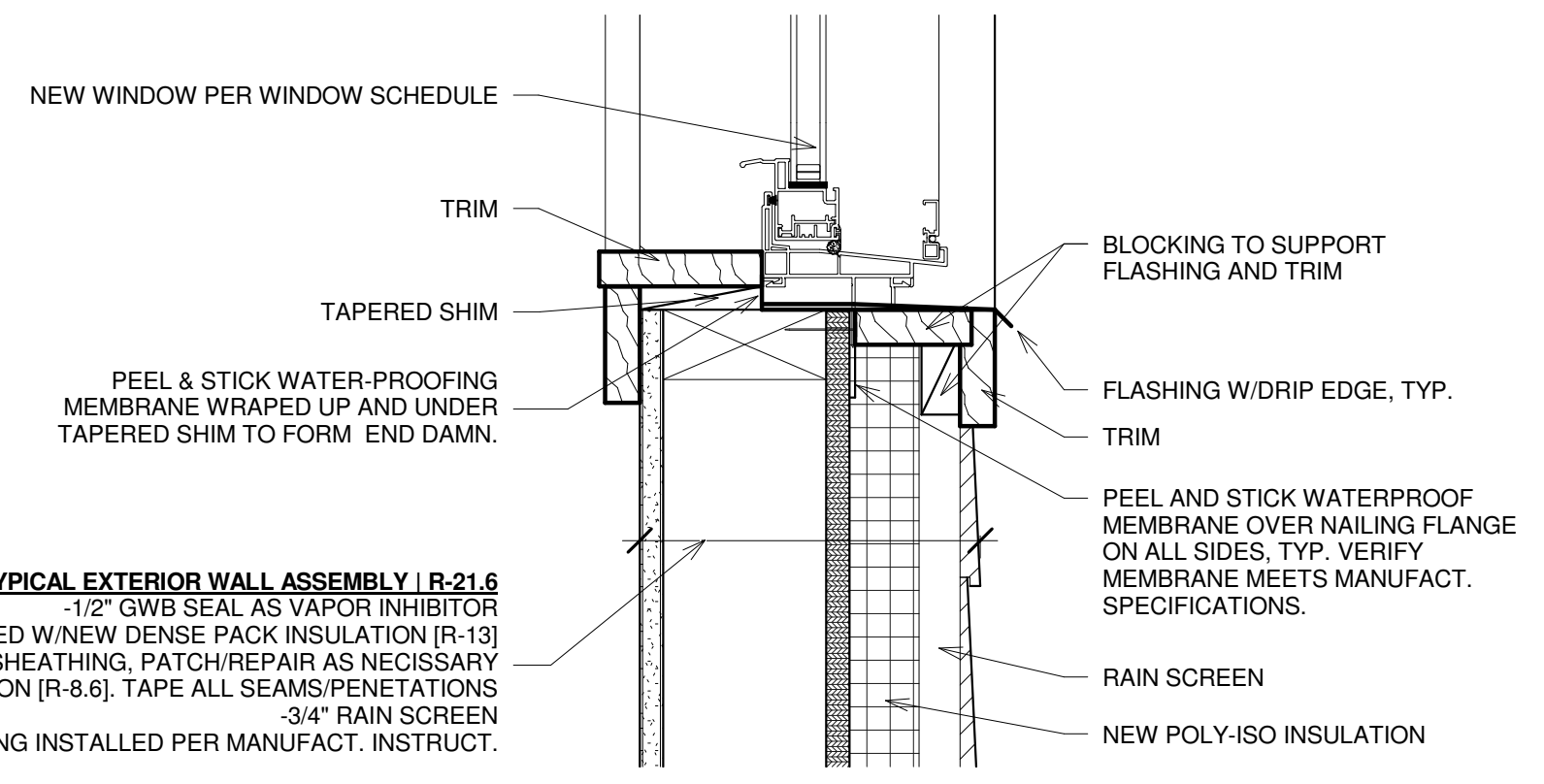
8 TYPICAL HEAD DETAIL
 3" = 1'-0"



2 RIDGE DETAIL
 1 1/2" = 1'-0"

TYPICAL ROOF ASSEMBLY R-59
 -ASPHALT SHINGLES
 -ICE-AND-WATER SHIELD EXTENDING 3'-0" FROM EVES AND VALLEYS, TYP.
 -3/4" APA-RATED SHEATHING FASTENED W/8d NAILS 6" O.C., TYP.
 -ROOF RAFTERS FILLED W/CLOSED-CELL SPRAY FOAM INSULATION
 -1/2" GWB

TYPICAL EXTERIOR WALL ASSEMBLY I R-21.6
 -1/2" GWB SEAL AS VAPOR INHIBITOR
 -2x4 STUD (EXISTING) FILLED W/NEW DENSE PACK INSULATION [R-13]
 -EXISTING SHEATHING, PATCH/REPAIR AS NECESSARY
 -NEW 1.5" RIGID POLY-ISO INSULATION [R-8.6]. TAPE ALL SEAMS/PENETRATIONS
 -3/4" RAIN SCREEN
 -VINYL SIDING INSTALLED PER MANUFACT. INSTRUCT.



7 TYPICAL SILL DETAIL
 3" = 1'-0"