

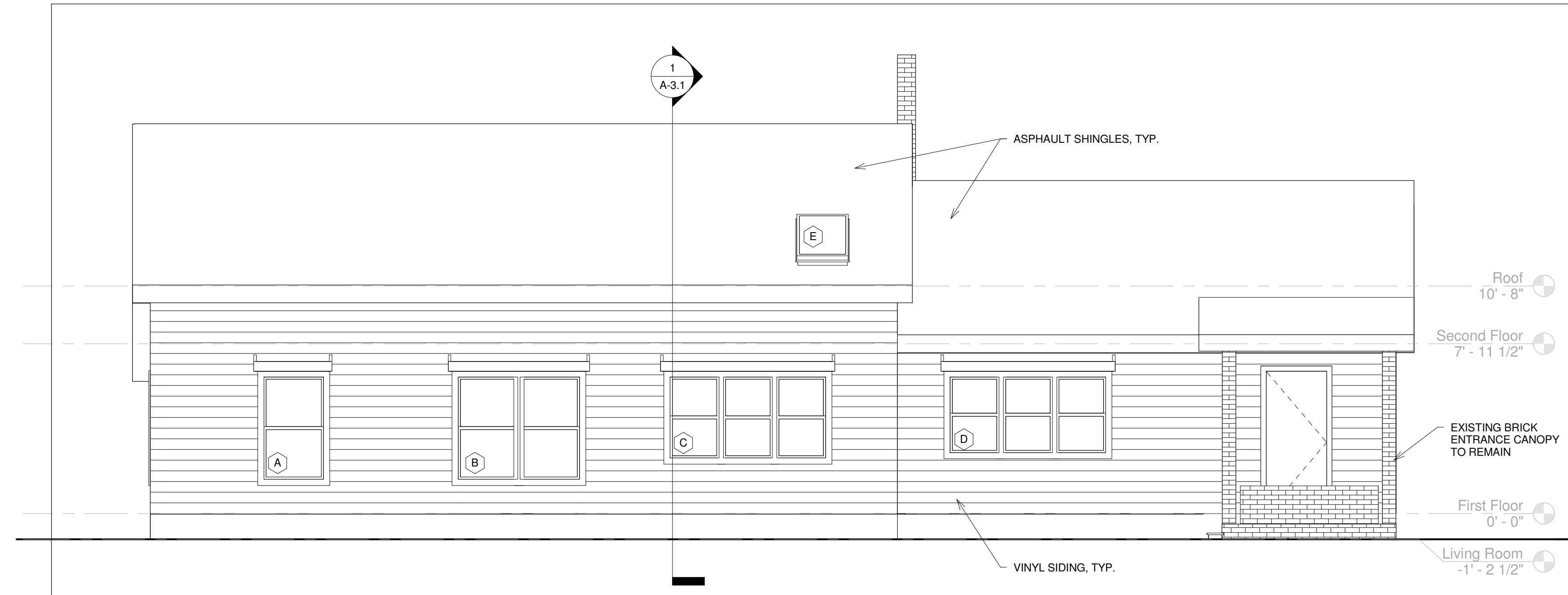
Sherwood Street Renovation
RENOVATION
 325 SHERWOOD STREET
 JOSH WOJCIK



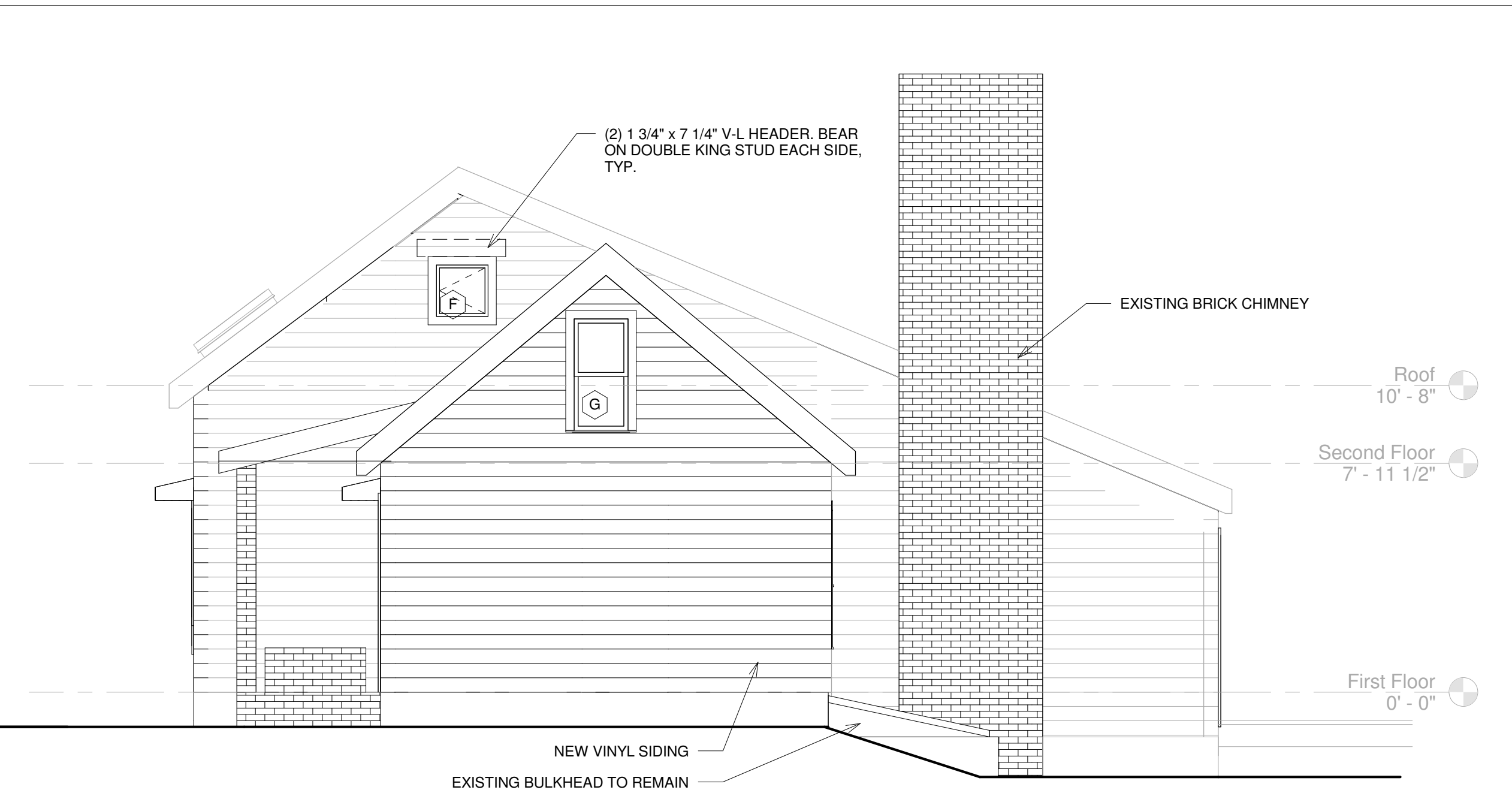
DEXTROUS CREATIVE
 PORTLAND, ME 04102
 TRACIE REED, ARCHITECT
 NCARB, AIA, LEED AP BD+C
 traciereed@dextrouscreative.com
 207.409.0459 (cell)

STRUCTURAL ENGINEER
 AL HODSON
 RESURGENCE ENGINEERING
 61 INDIA STREET, SUITE 7
 PORTLAND, ME 04101
 AL@RESURGENCEENGINEERING.COM
 207.615.9985 (CELL)

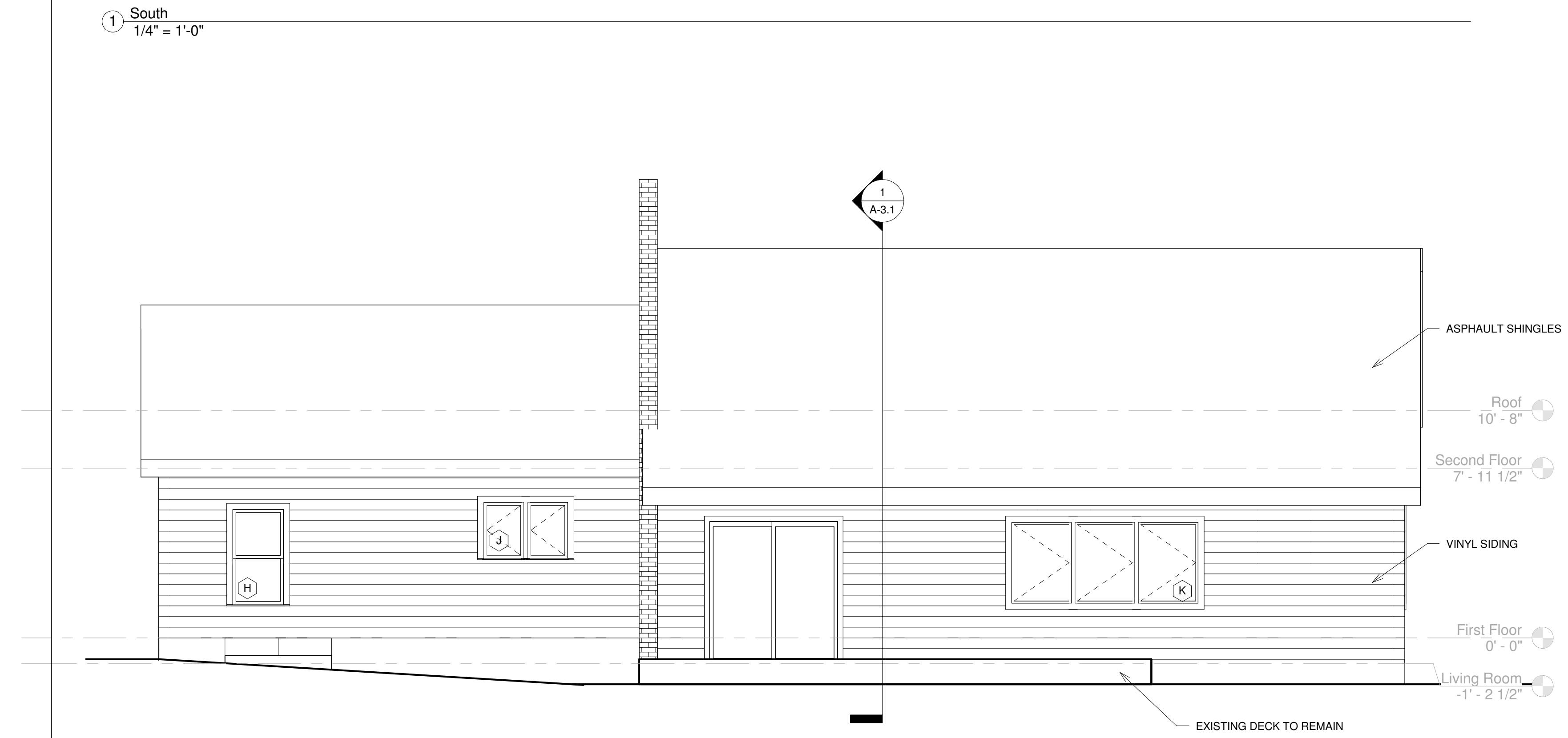
GENERAL CONTRACTOR
 JOSH WOJCIK
 UPWRIGHT FRAMEWORKS
 PO BOX 83
 WILTON, ME 04294
 UPWRIGHTFRAMEWORKS@GMAIL.COM
 207.749.9656 (CELL)



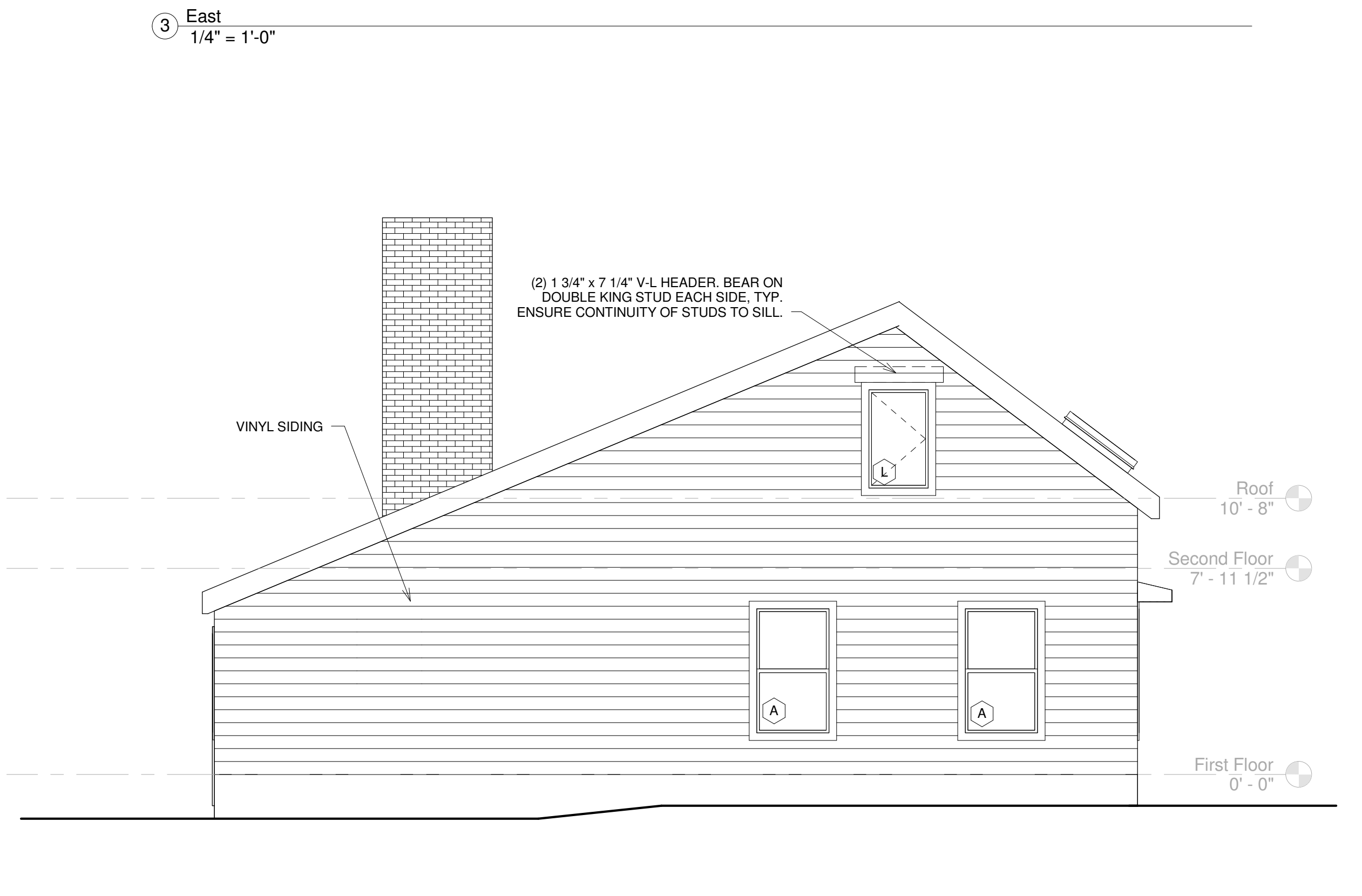
1 South
1/4" = 1'-0"



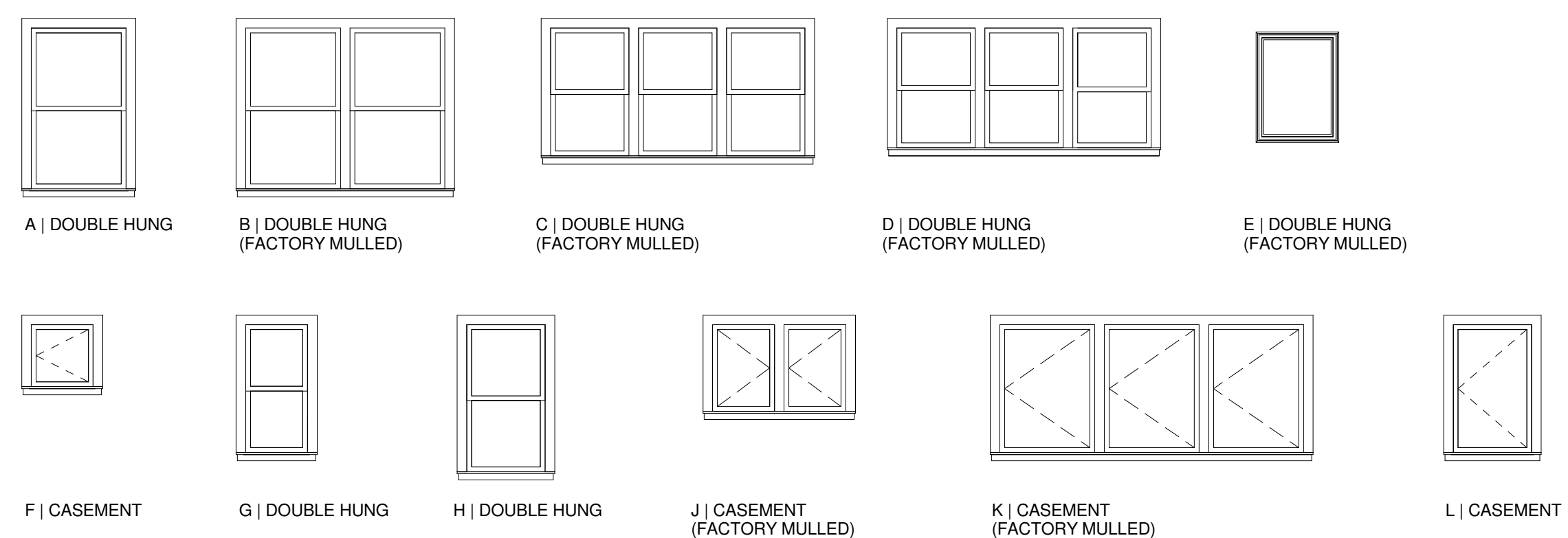
3 East
1/4" = 1'-0"



2 North
1/4" = 1'-0"

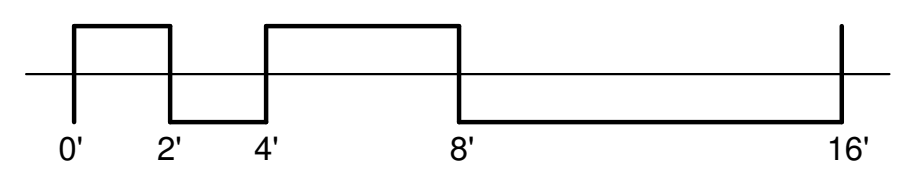


4 West
1/4" = 1'-0"



WINDOW SCHEDULE			
#	Size	Type	Comments
A	36" x 60"	Double Hung	
B	(2) 36" x 60"	Double Hung	Mulled
C	(3) 30" x 48"	Double Hung	Mulled
D	(3) 30" x 45"	Double Hung	Mulled
E	28" x 38"	Egress Skylight	Tempered Glass
F	24" x 24"	Casement	
G	24" x 48"	Double Hung	
H	30" x 55"	Double Hung	
J	(2) 24" x 33"	Casement	Mulled
K	(3) 36" x 48"	Casement	Mulled
L	30" x 48"	Casement	Tempered Glass

WINDOWS
1/4" = 1'-0"



ELEVATIONS

Project number	15-12
Date	05.28.15
Drawn by	TJR
Checked by	Checker

A-2.1

Scale 1/4" = 1'-0"