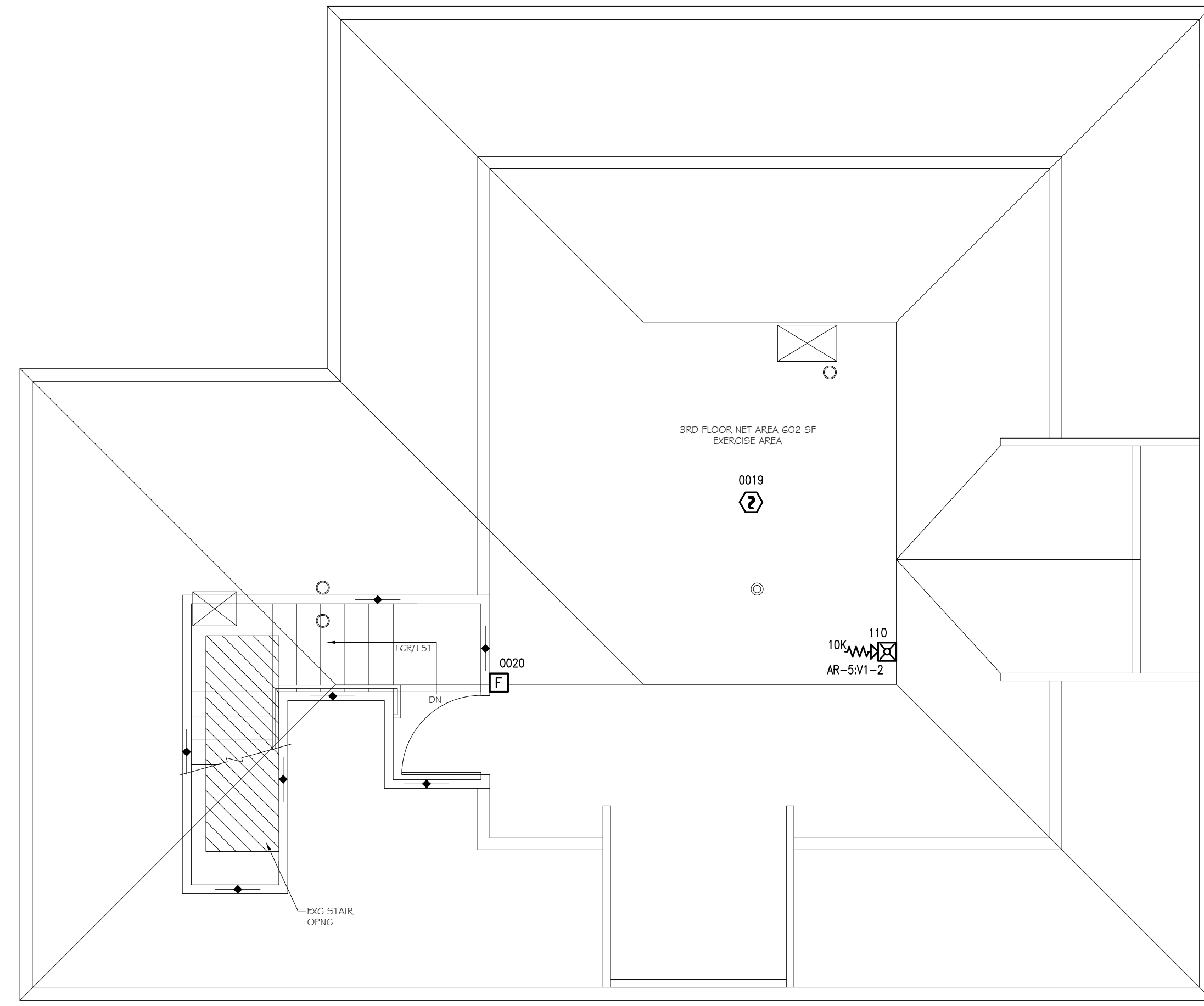
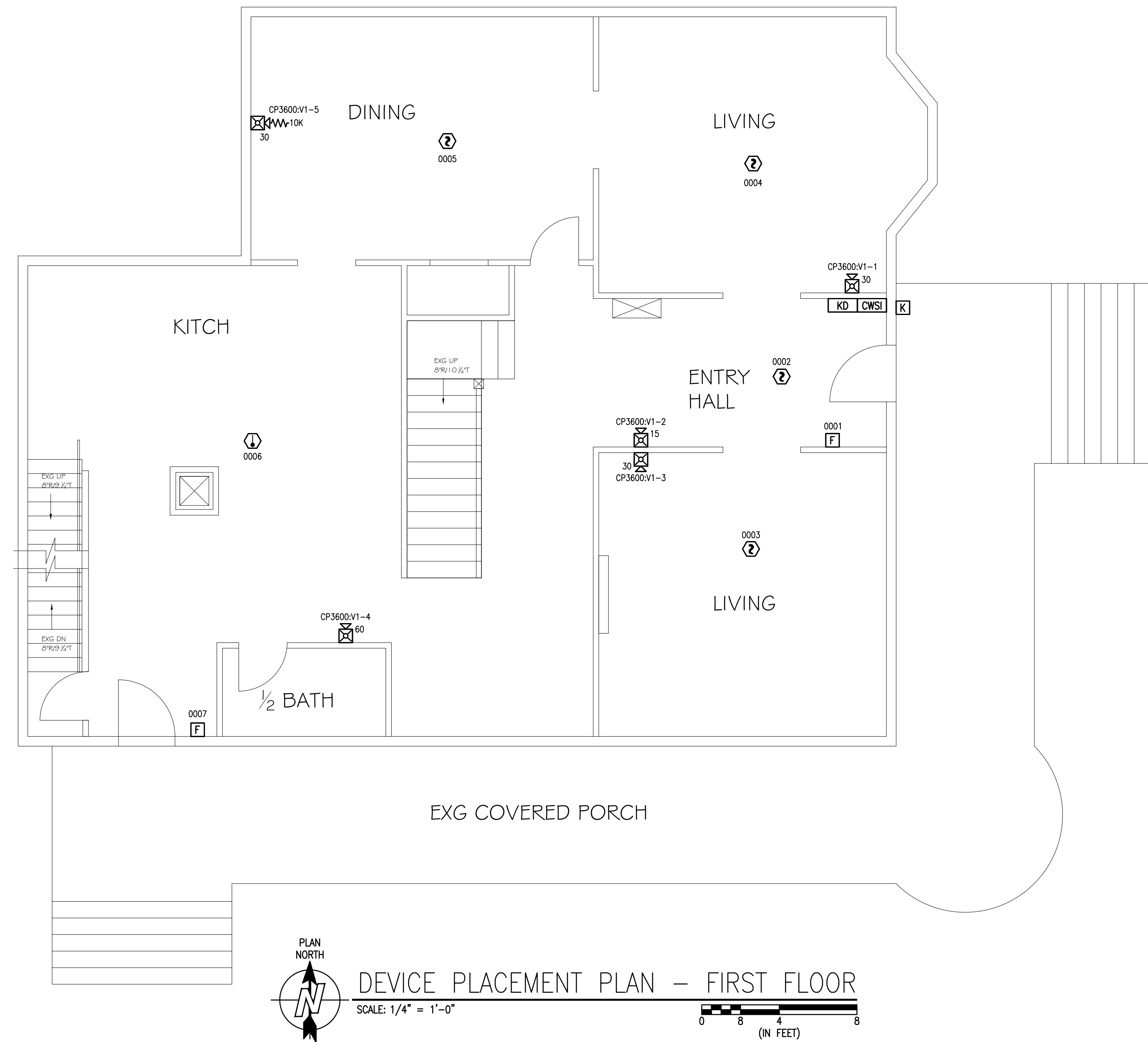


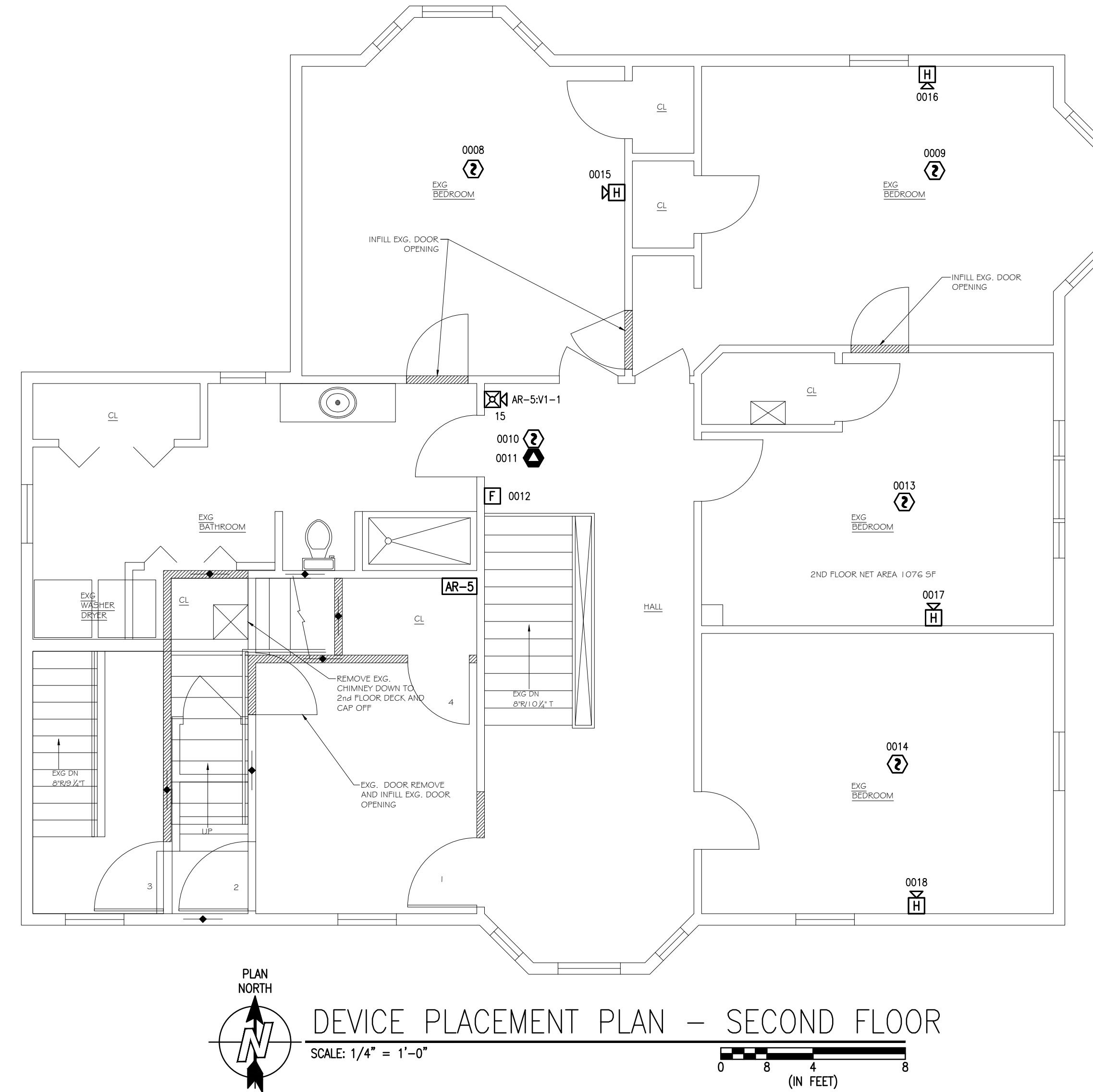
- GENERAL NOTES:
1. ALL CEILING ARE ASSUMED TO BE 10' A.F.F., SMOOTH CONSTRUCTION UNLESS NOTED OTHERWISE.
 2. TYP ALL SPEAKERS AT 0.5W UNLESS NOTED OTHERWISE.
 3. SET ALL SPEAKER VOLUME JUMPERS TO THE 70-75 SETTING.
 4. ALL NOTIFICATION APPLIANCE CANDELA INTENSITY PLUS SHALL RETAIN THEIR FACTORY SETTING OF "TAP" UNLESS OTHERWISE DIRECTED BY THE AUTHORITY HAVING JURISDICTION.



PLAN NORTH
 DEVICE PLACEMENT PLAN - THIRD FLOOR
 SCALE: 1/4" = 1'-0"
 (IN FEET)



PLAN NORTH
 DEVICE PLACEMENT PLAN - FIRST FLOOR
 SCALE: 1/4" = 1'-0"
 (IN FEET)



PLAN NORTH
 DEVICE PLACEMENT PLAN - SECOND FLOOR
 SCALE: 1/4" = 1'-0"
 (IN FEET)

CWSI-735 WASHINGTON AVENUE

WASHINGTON AVENUE APARTMENTS
 375 WASHINGTON AVENUE
 SOUTH PORTLAND, ME 05104

ISSUE LOG	MARK	DATE	CD	CRK	DESCRIPTION

DRAWN BY: DZONA
 CHECKED BY: SKALAFARSKI
 ISSUE DATE: 1/12/17
 JOB #: 147
 PROJECT #: 147-14726988
 SIMPLEXGRINNELL © 2017
 SYSTEM: FIRE ALARM SYSTEM
 SHEET: DEVICE PLACEMENT PLAN

FILE PATH: P:\2017\147\CWSI\735 Washington Ave\CAD\FA-101.dwg
 LAST SAVED BY: DZONA
 LAST PRINTED: 1/13/2017 2:36:59 PM
 30" x 42" - Arch E1 Size