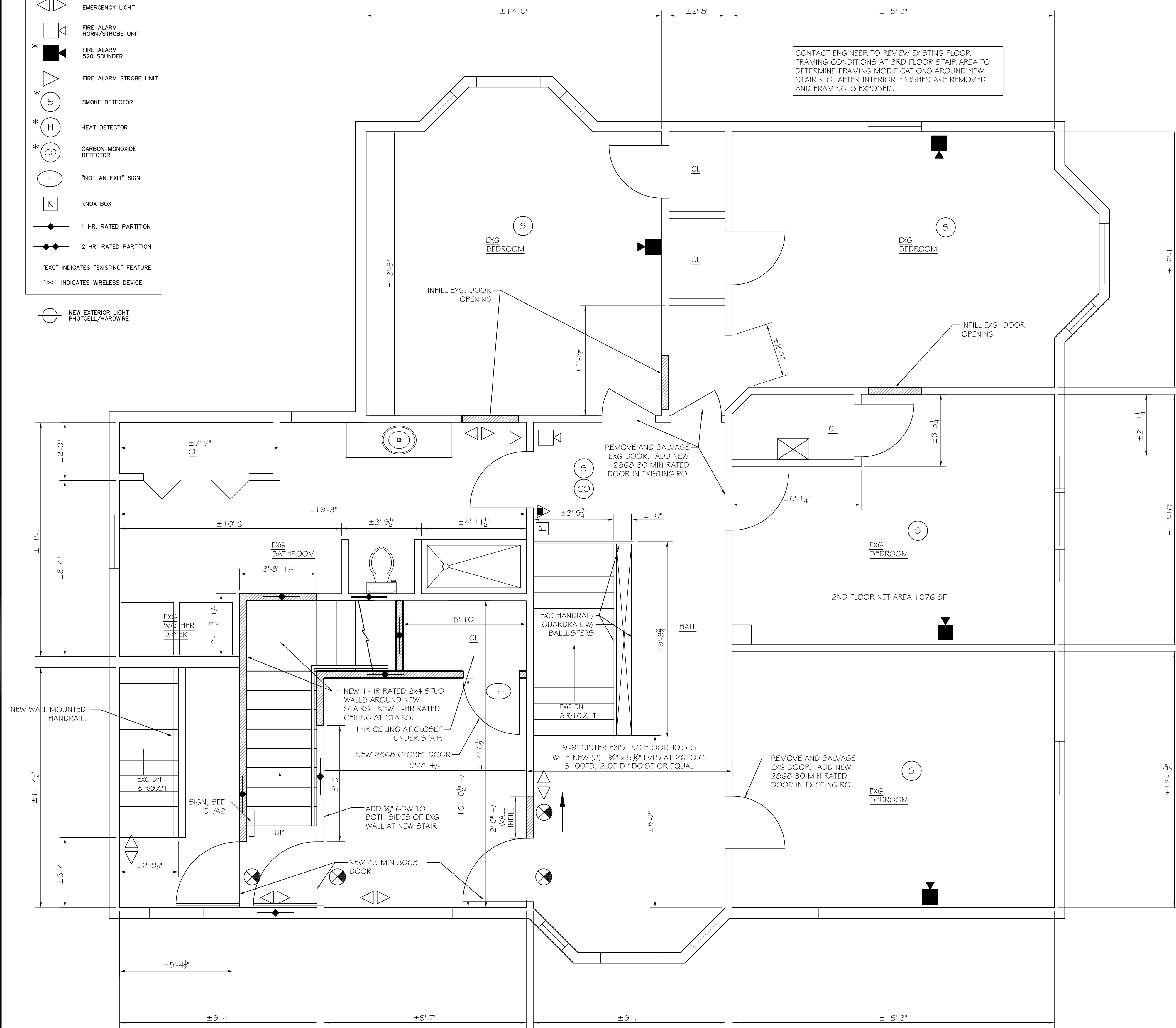
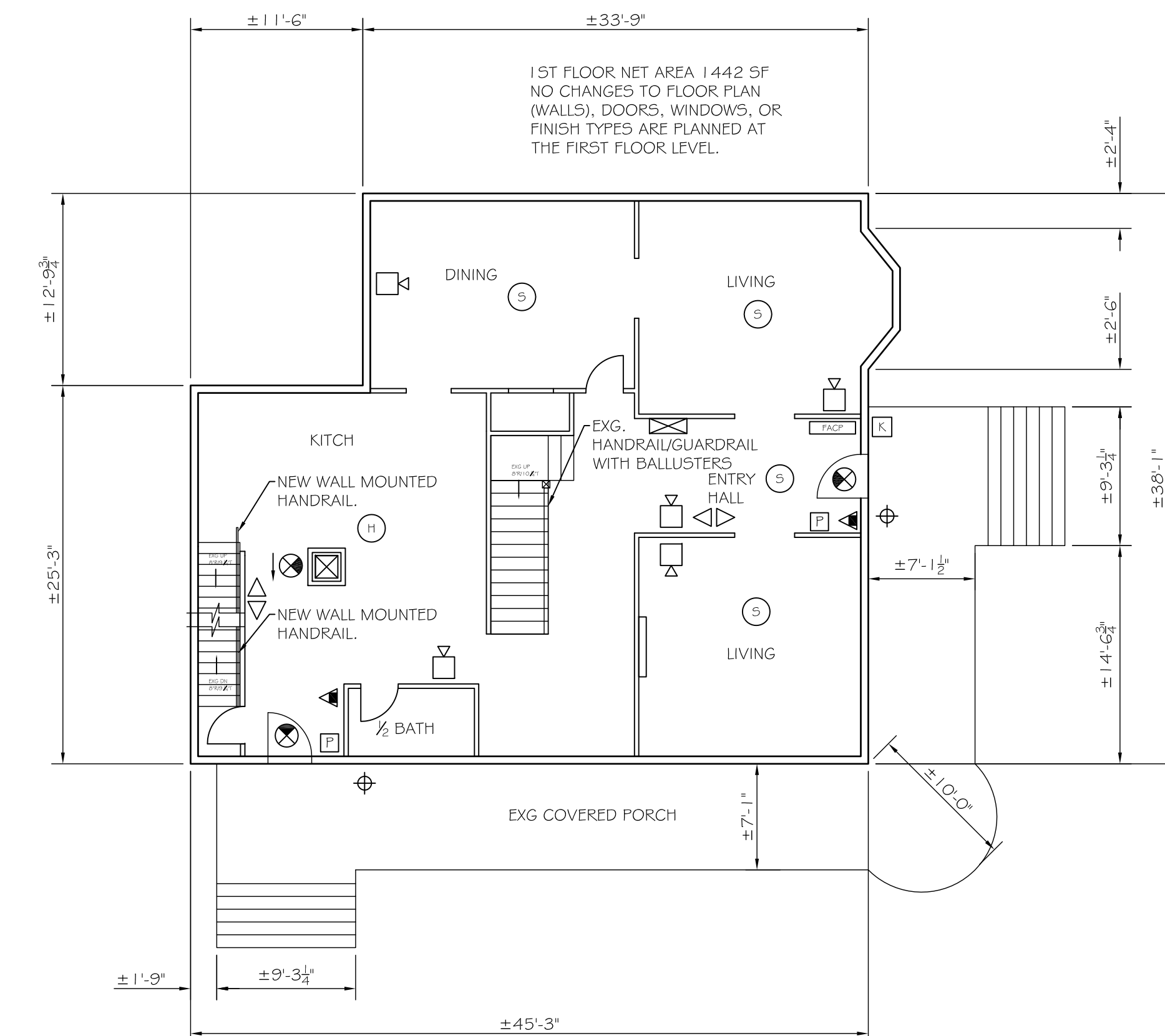


- NOTES:
1. ALL NEW RATED DOORS TO BE SOLID WOOD CORE PANELS WITH HOLLOW METAL FRAMES, AND LEVER ACTUATED PASS-THRU LATCH SETS (NON-KEYED).
 2. ALL SALVAGED ITEMS TO BE RETURNED TO OWNER.
 3. ALL CONSTRUCTION SHOWN IS EXISTING, UNLESS NOTED OTHERWISE (UNO).
 4. CONTRACTOR TO VERIFY ALL EXISTING DIMENSIONS AND DIMENSIONS NOTED +/- PRIOR TO CONSTRUCTION.

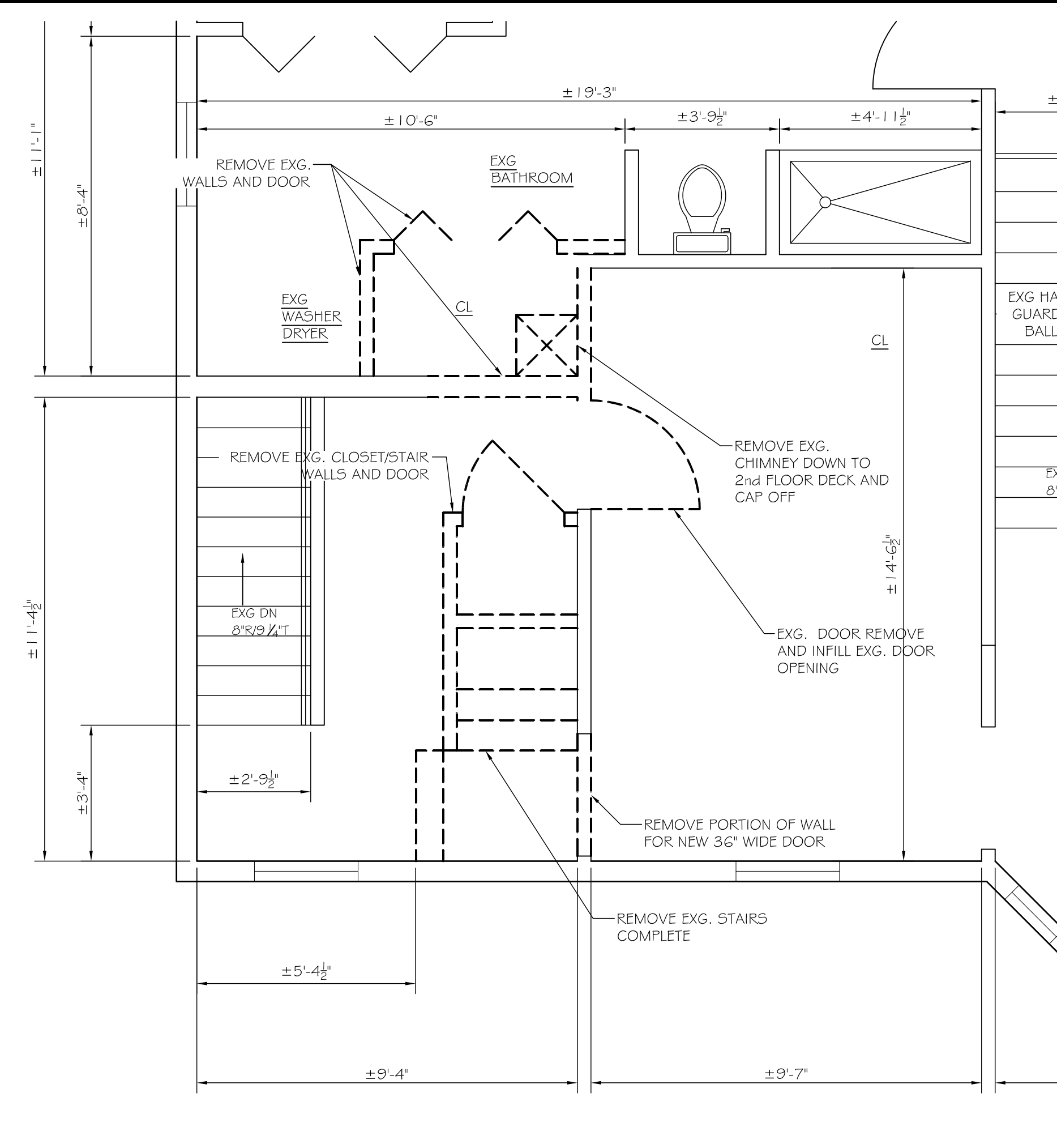
LIFE SAFETY SYMBOLS	
	EXIT LIGHT
	FIRE EXTINGUISHER
	FIRE ALARM PULL MANUAL PULL STATION
	FIRE ALARM PANEL
	EMERGENCY LIGHT
	FIRE ALARM HORN/STROBE UNIT
	FIRE ALARM 520 SOUNDER
	FIRE ALARM STROBE UNIT
	SMOKE DETECTOR
	HEAT DETECTOR
	CARBON MONOXIDE DETECTOR
	"NOT AN EXIT" SIGN
	KNOX BOX
	1 HR. RATED PARTITION
	2 HR. RATED PARTITION
	EXG INDICATES "EXISTING" FEATURE
	W INDICATES WIRELESS DEVICE
	NEW EXTERIOR LIGHT PHOTCELL/HARDWIRE



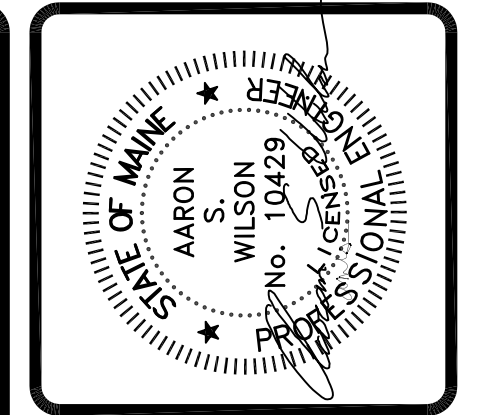
A3 2ND FLOOR PLAN
SCALE: 3/8" = 1'-0"



B1 EXG. FIRST FLOOR PLAN
SCALE: 1/8" = 1'-0"



A1 PARTIAL 2ND FLOOR DEMOLITION PLAN
SCALE: 3/8" = 1'-0"



ASSOCIATED DESIGN PARTNERS INC.
 Office: (207) 878-1751
 80 Leighton Road, Fairmount, Maine 04105
 Fax: (207) 878-1788
 E-Mail: adp@adpengineering.com

THIS DRAWING, DESIGN AND ELECTRONIC FILE ARE THE PROPERTY OF ASSOCIATED DESIGN PARTNERS, INC. THE REPRODUCTION, COPYING OR ANY OTHER USE OF THIS DOCUMENT WITHOUT WRITTEN CONSENT IS PROHIBITED.

PROJECT: **735 WASHINGTON AVE. PORTLAND, MAINE**
 FOR: _____
 SHEET TITLE: **1ST AND 2ND FLOOR PLANS ISSUED FOR PERMITTING**

NO.	BY	DATE	REVISIONS DESCRIPTION
1	ASW		
2			
3			
4			
5			
6			
7			

DATE : 11-7-16
 SCALE : AS NOTED
 DESIGN BY: ASW
 DRAWN BY: RSC
 FILE #: 16333-A1.dwg
 PROJECT NUMBER:
16333
 SHEET NO:
A1