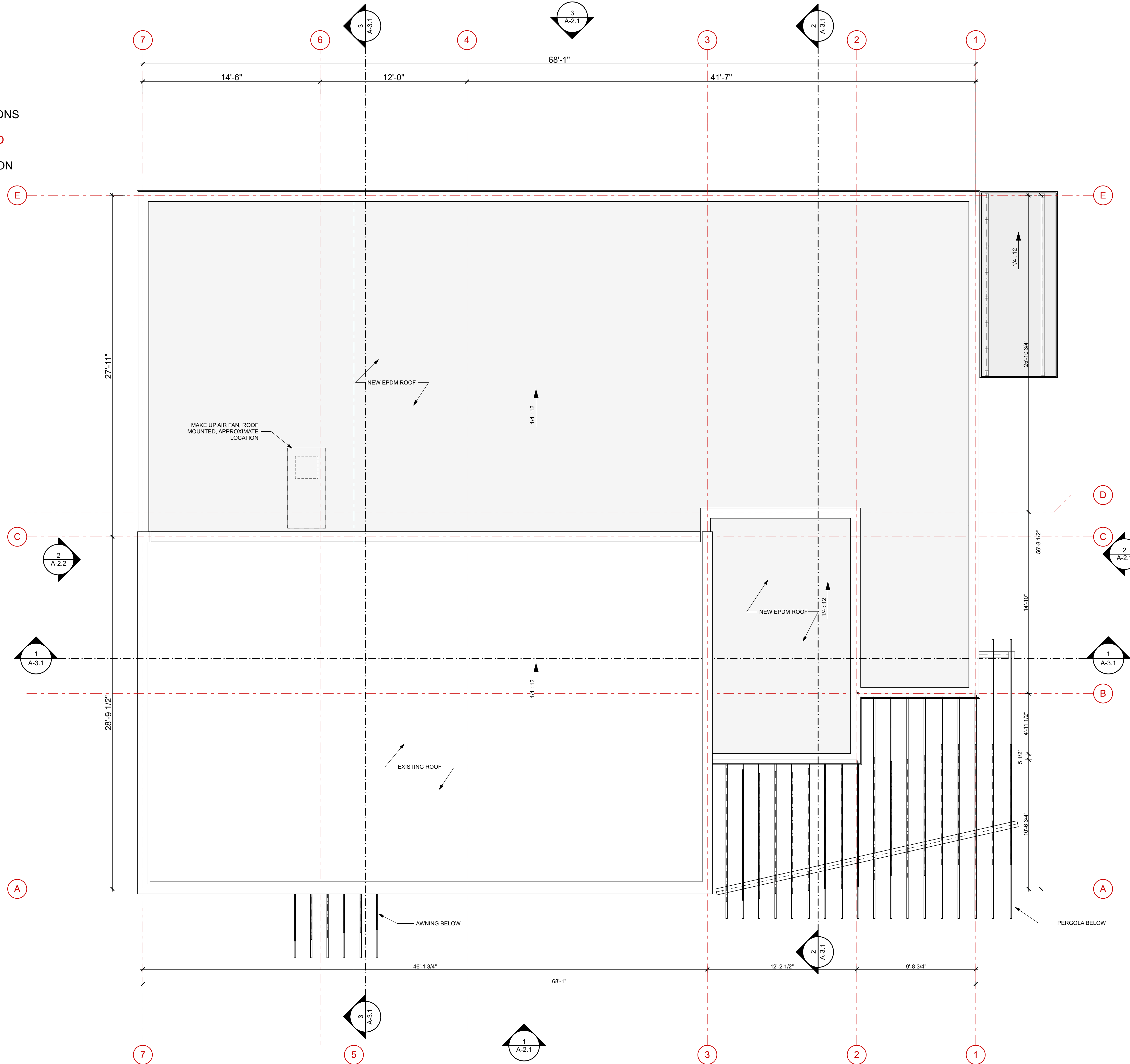
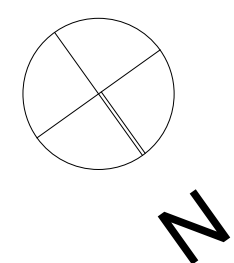


- EXISTING CONDITIONS
- TO BE DEMOLISHED
- NEW CONSTRUCTION



1 ROOF PLAN



PROJECT
MONTE'S FINE FOODS

788 Washington Ave
 Portland, ME 04103

STRUCTURAL
L & L Structural Engineering Services, Inc.
 6 Q Street
 South Portland, ME 04106
 p: (207) 767-4830

CIVIL
Ransom Consulting, Inc.
 400 Commercial Street, Suite 404
 Portland, ME 04101
 p: (207) 772-2891

MECHANICAL | ELECTRICAL
Spark Applied Efficiency
 29 Vincent Street #1,
 South Portland, ME 04106
 p: (207) 333-1805

PLUMBING
Ripcord Engineering Inc.
 PO Box 4175
 Portland, ME 04101
 p: (207) 835-4060

NOT FOR CONSTRUCTION

PROJECT NO.	QTR
DATE	06/05/18
REVISED 1	
REVISED 2	
DRAWN BY	CA/DF
PHASE	SITE PLAN LEVEL II

ROOF PLAN

A-1.2