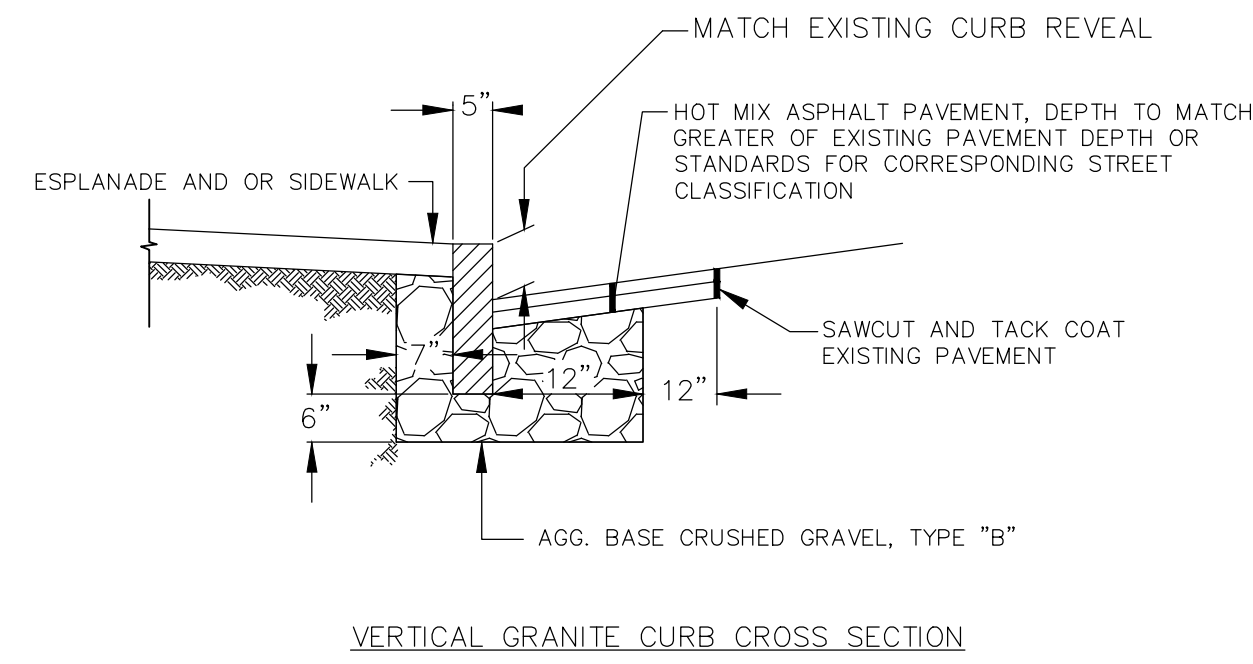
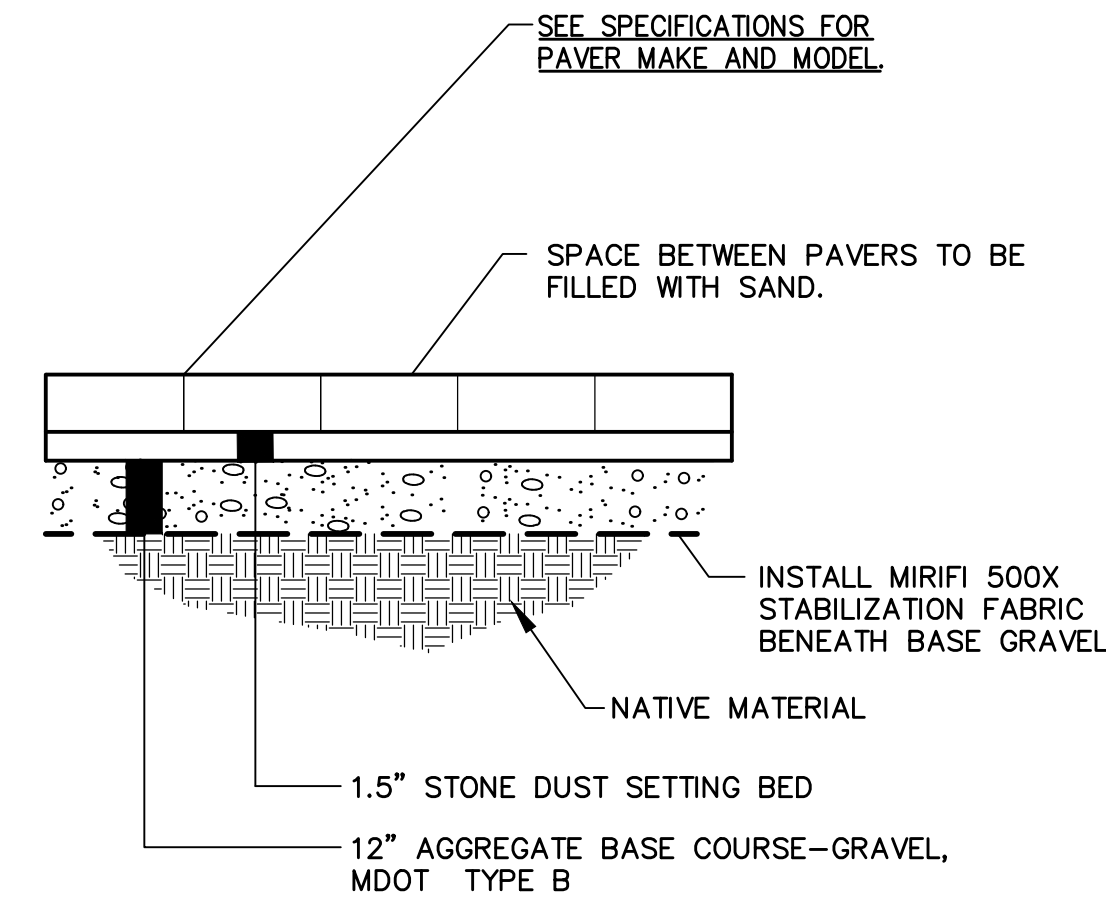


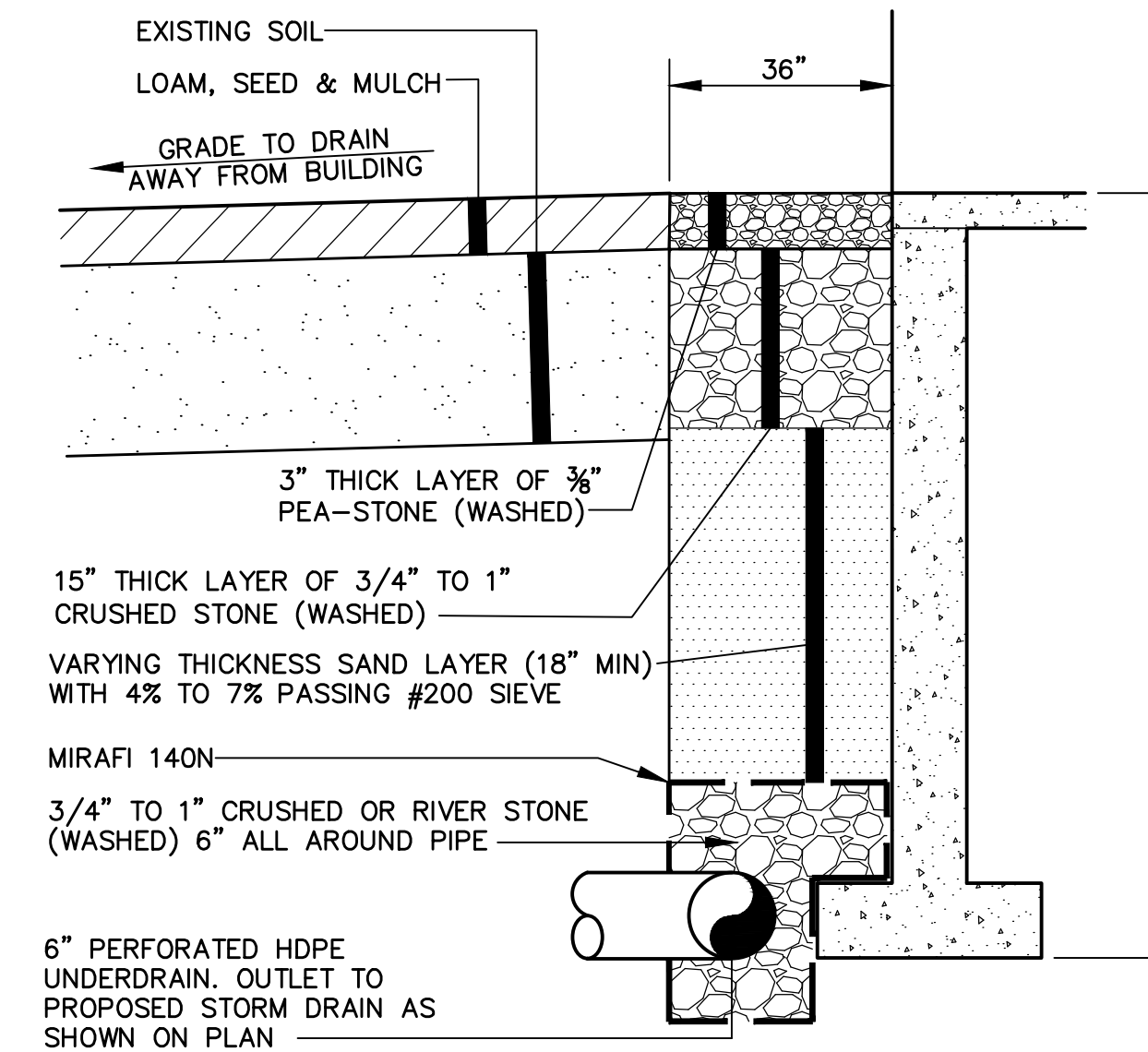
**TYPICAL DRIVEWAY/PARKING LOT RECONSTRUCTION OUTSIDE OF RIGHT OF WAY**  
NOT TO SCALE



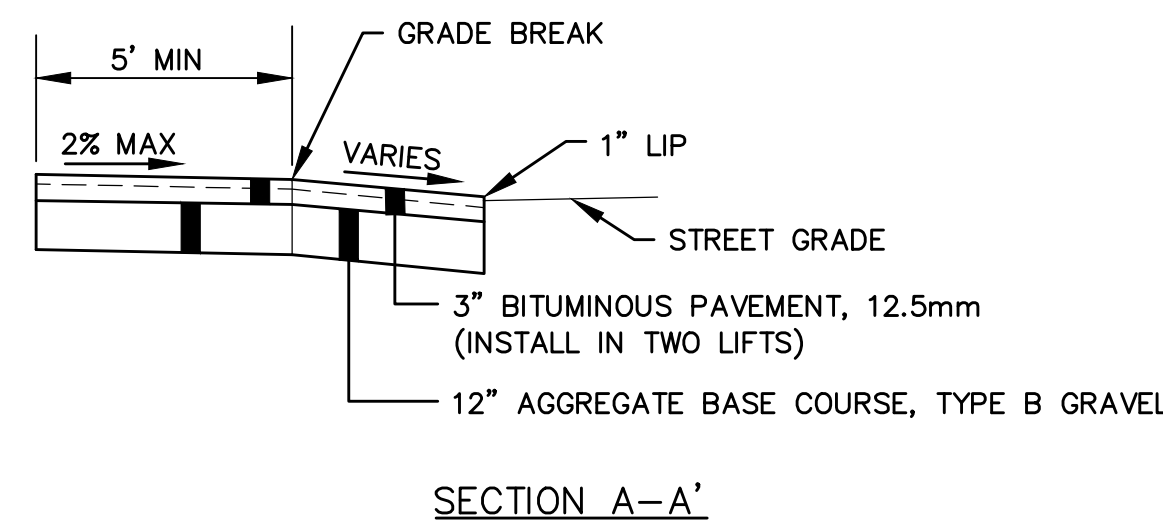
**VERTICAL GRANITE CURB INSTALLATION IN EXISTING STREETS**  
NOT TO SCALE



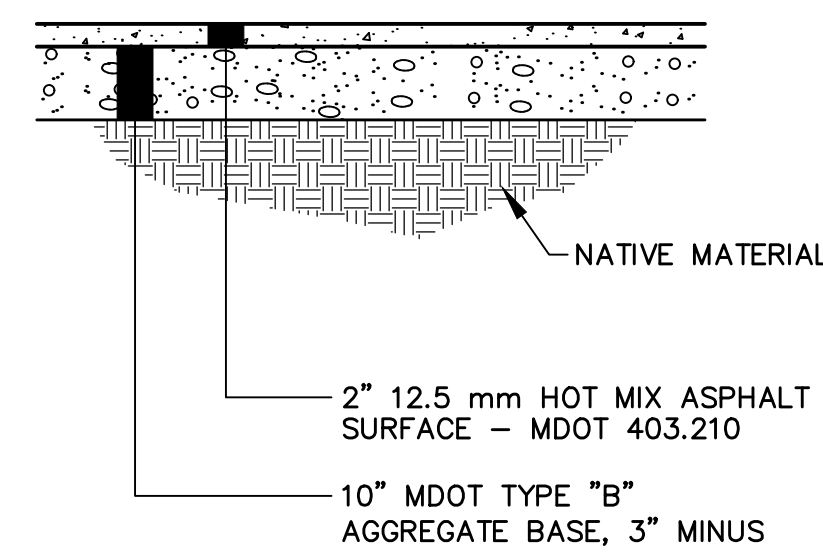
**CONCRETE PAVER DETAIL**  
NOT TO SCALE



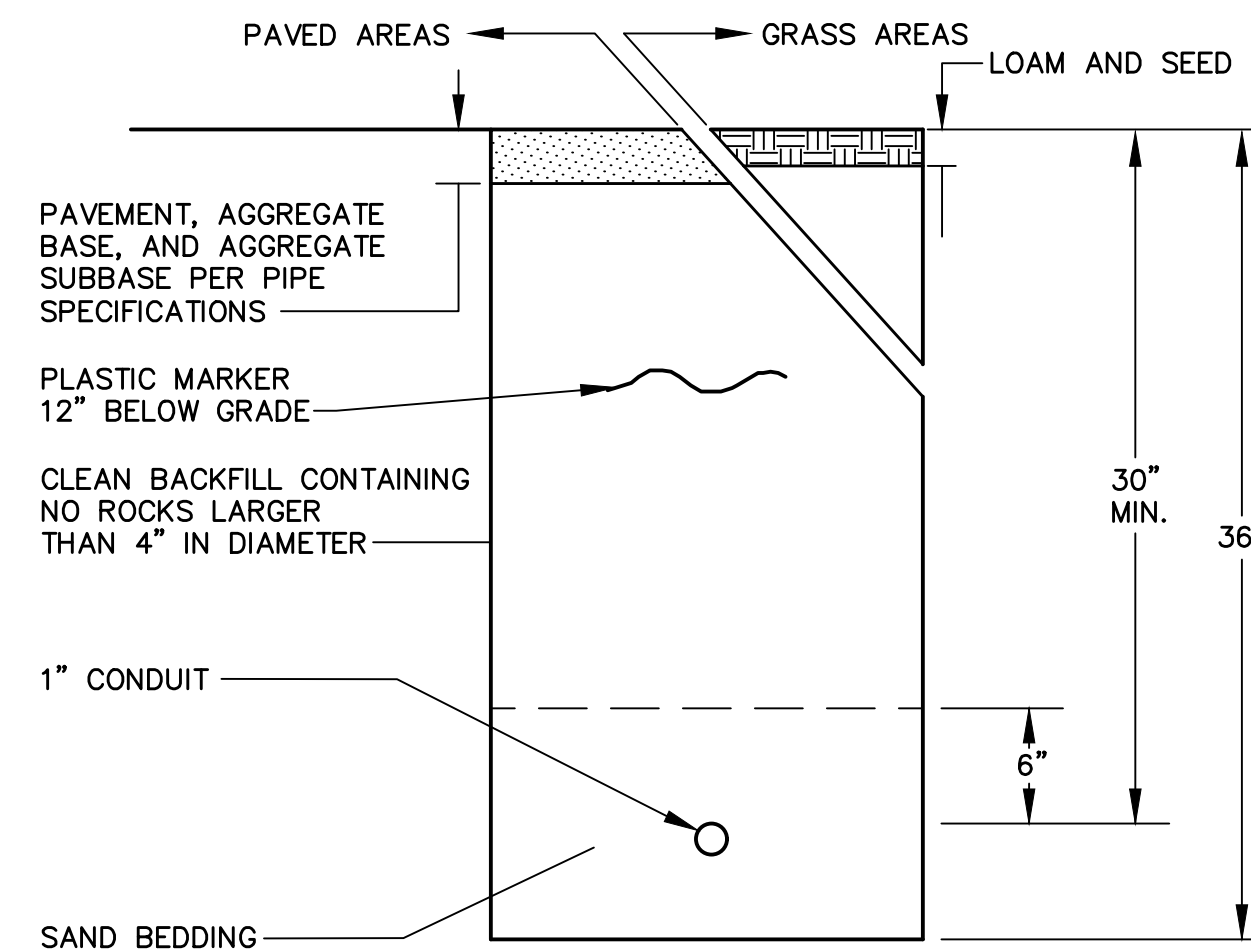
**UNDERDRAINED DRIP EDGE DRAIN DETAIL**  
NOT TO SCALE



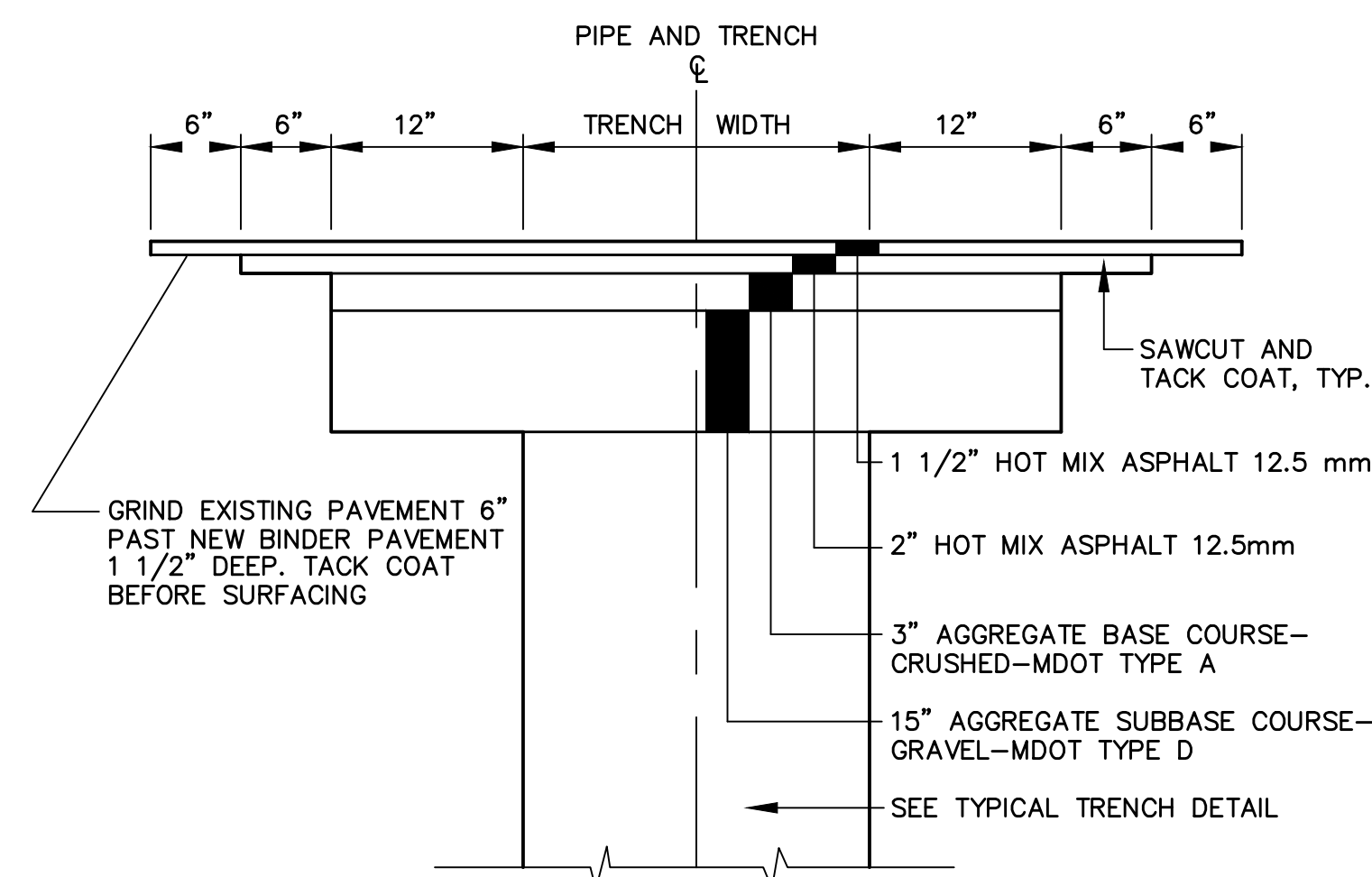
**BITUMINOUS SIDEWALK DETAIL AT DRIVEWAY CROSSINGS**  
NOT TO SCALE



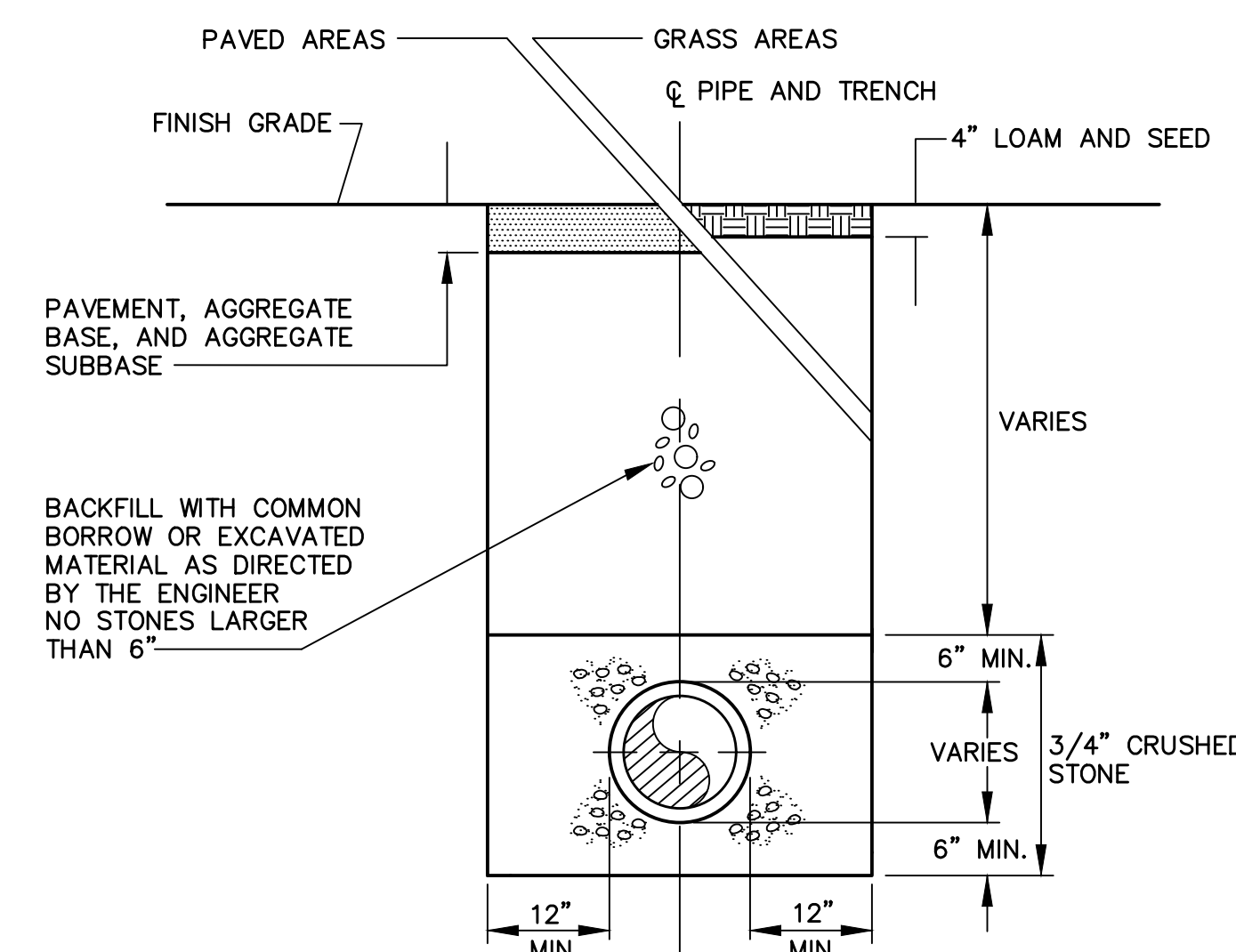
**BITUMINOUS SIDEWALK**  
NOT TO SCALE



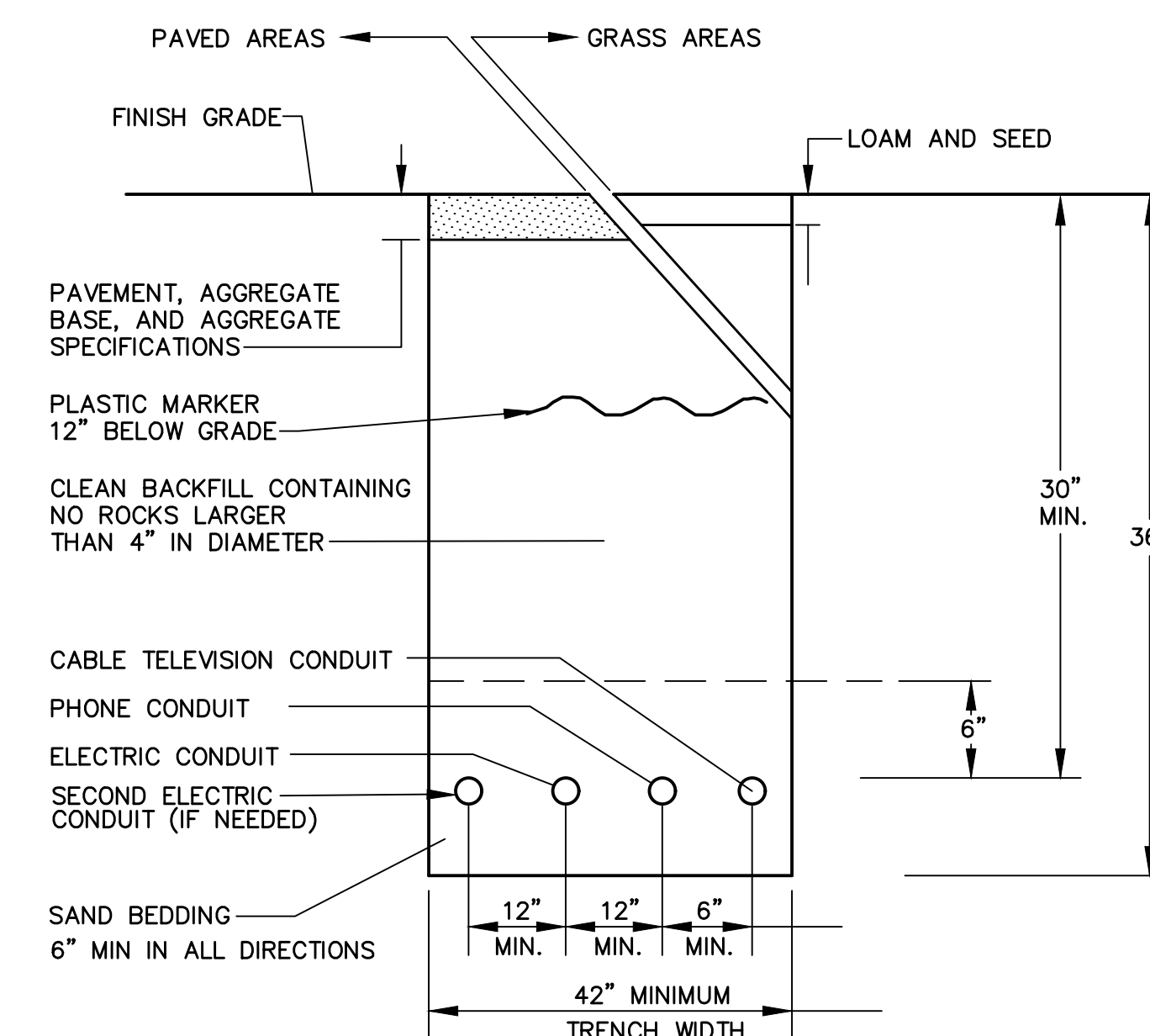
**STREET LIGHTING CONDUIT TRENCH DETAIL**  
NOT TO SCALE



**TYPICAL TRENCH PAVING DETAIL**  
NOT TO SCALE



**TYPICAL PIPE TRENCH DETAIL**  
NOT TO SCALE



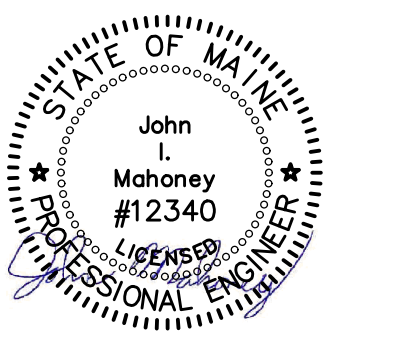
**UNDERGROUND ELECTRIC/COMMUNICATIONS UTILITY TRENCH DETAIL**  
NOT TO SCALE

Project:  
**MONTE'S FINE FOODS**  
788 WASHINGTON AVENUE  
PORTLAND, MAINE

Applicant:  
Quattrucci & Rouda, LLC  
109 Sheridan Street  
Portland, Maine 04101  
207-939-5616  
stevequattrucci@gmail.com



Civil Engineer  
Ransom Consulting, Inc.  
400 Commercial Street, Suite 404  
Portland, Maine 04101  
207-772-2891



CIVIL DETAILS		
No.	Revision/Issue	Date
C	BUILDING PERMIT	8-7-18
B	BUILDING PERMIT	7-17-18
A	PERMITTING	6-8-18
Design by: JIM      Checked by: SJB		
Drawn by: JIM      Approved by: SJB		
Project: 181.06031		
Sheet No:		

**C4**

**FOR PERMITTING**