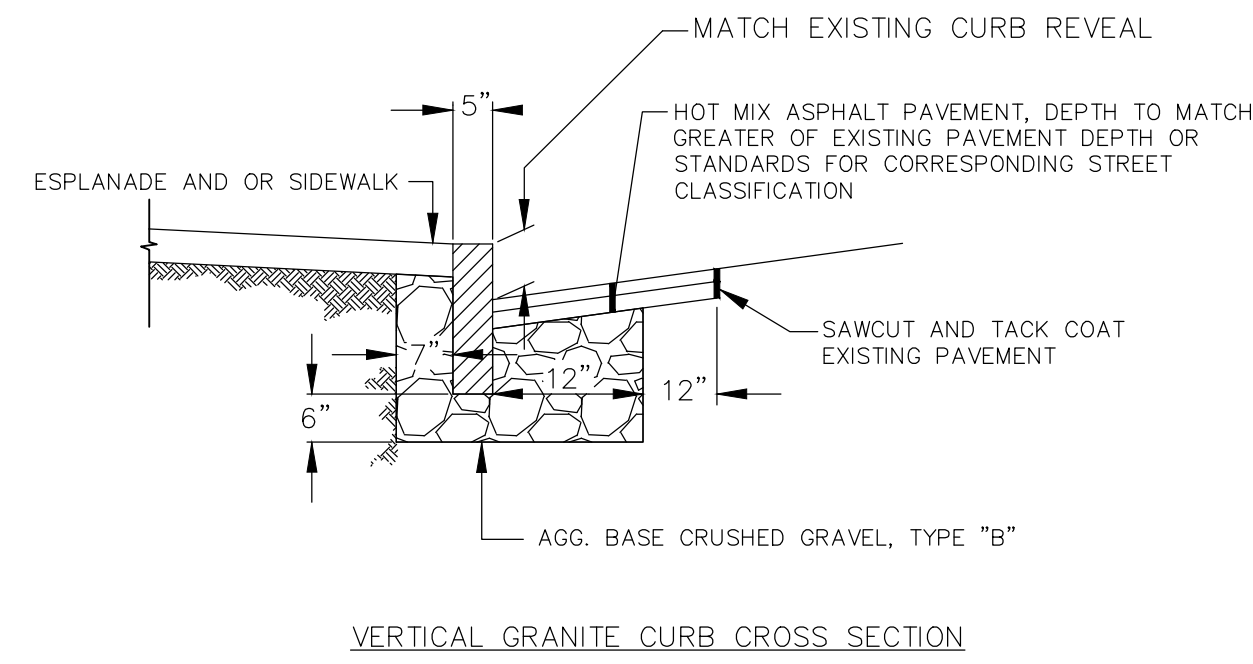
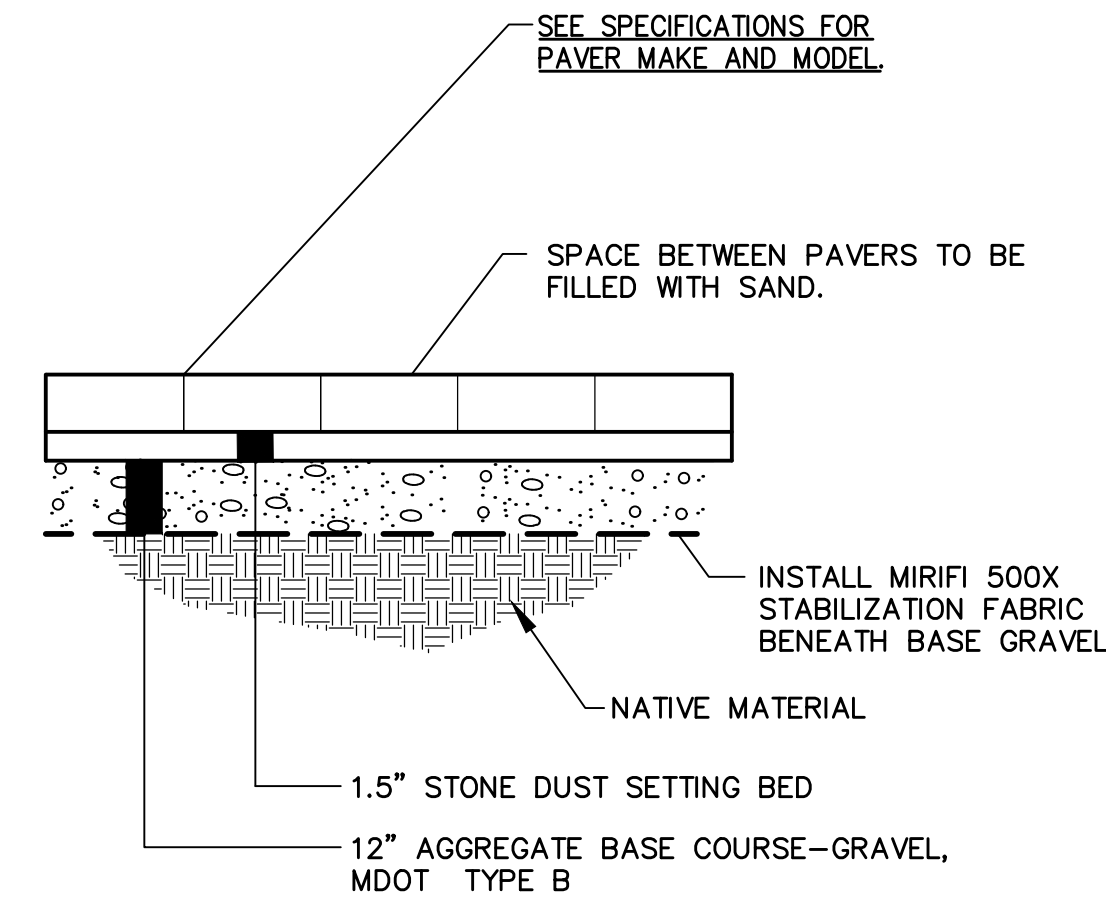


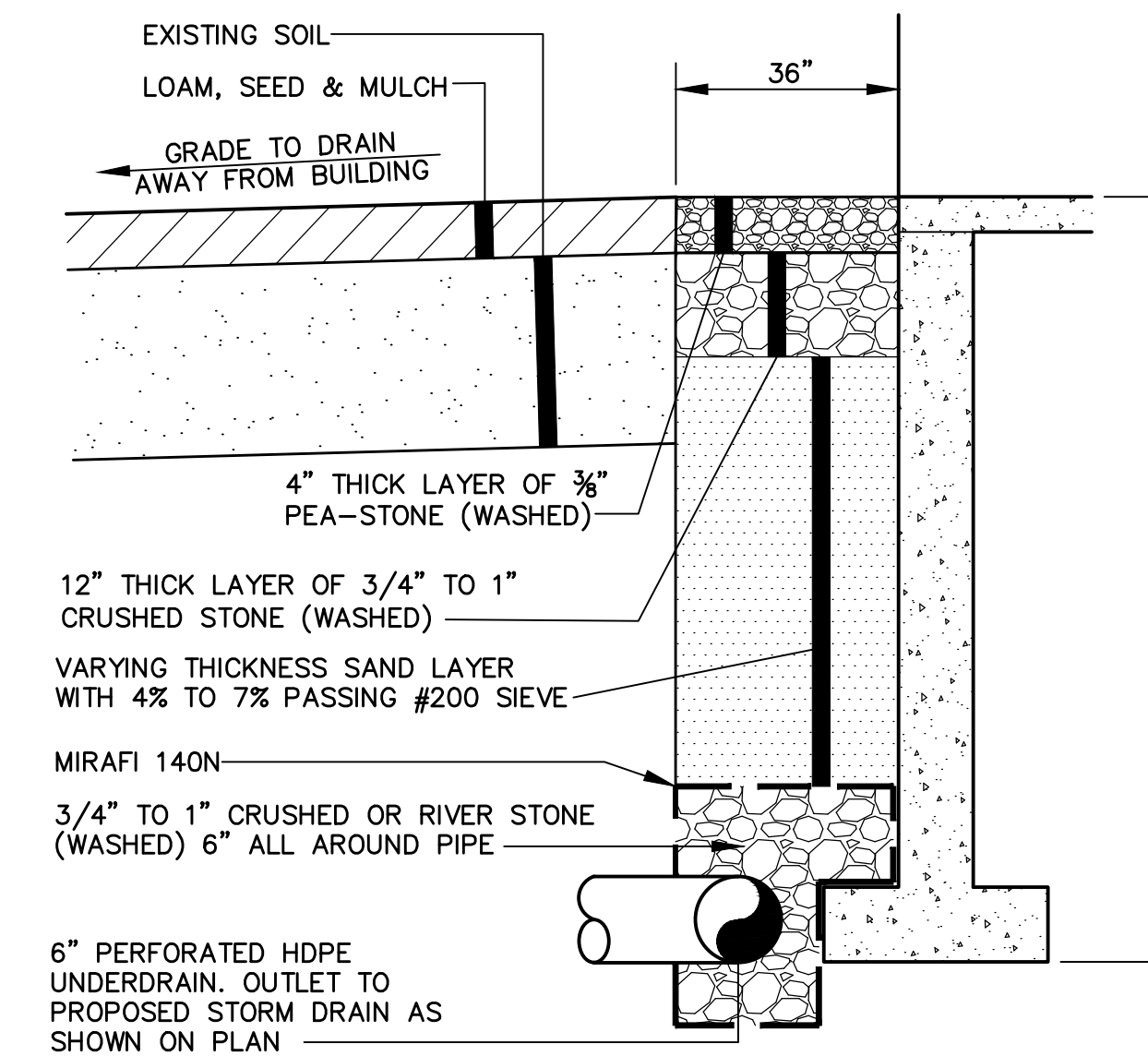
TYPICAL DRIVEWAY/PARKING LOT RECONSTRUCTION OUTSIDE OF RIGHT OF WAY
NOT TO SCALE



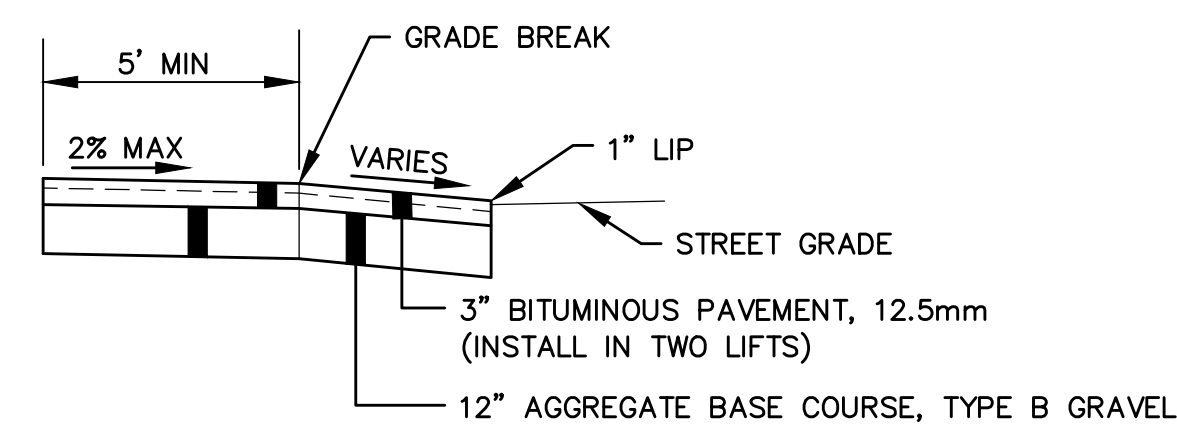
VERTICAL GRANITE CURB INSTALLATION IN EXISTING STREETS
NOT TO SCALE



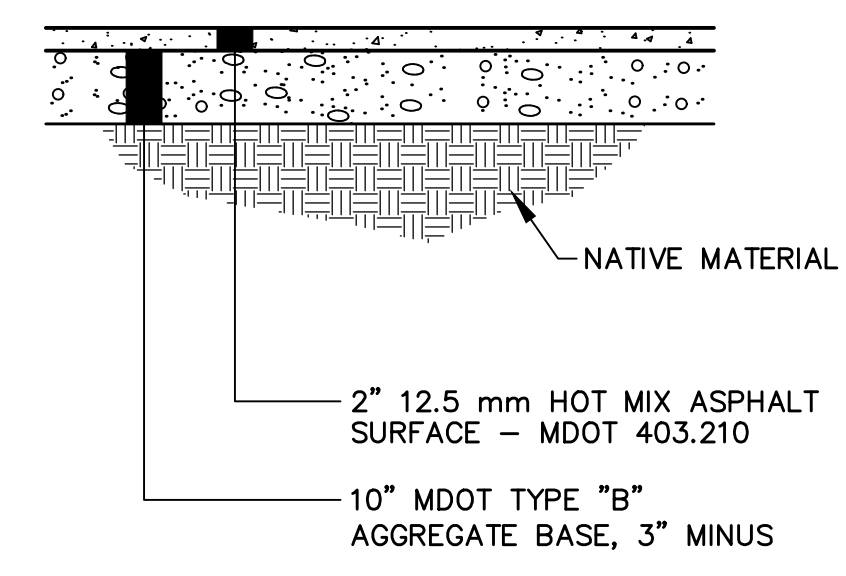
CONCRETE PAVER DETAIL
NOT TO SCALE



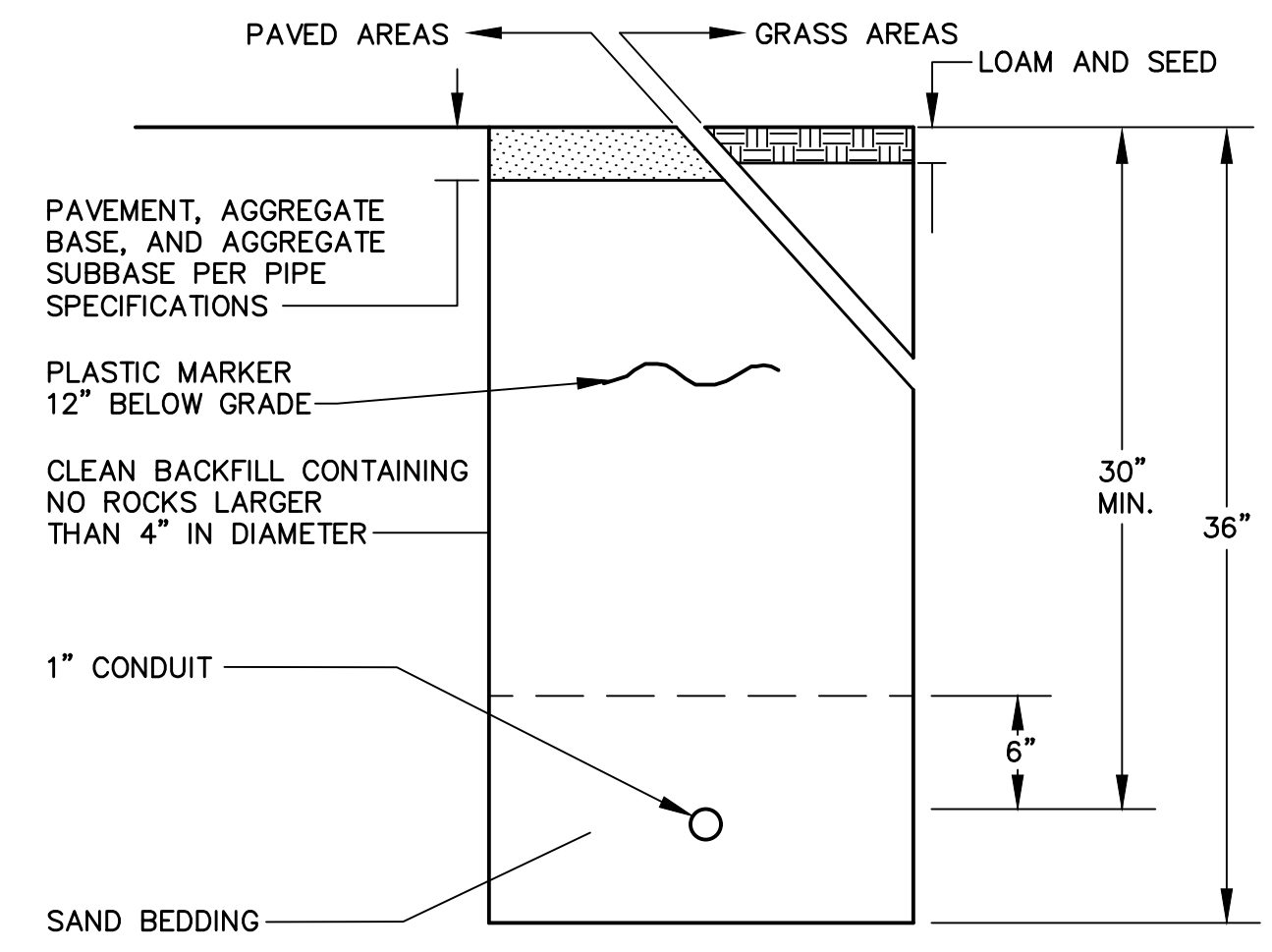
UNDERDRAINED DRIP EDGE DRAIN DETAIL
NOT TO SCALE



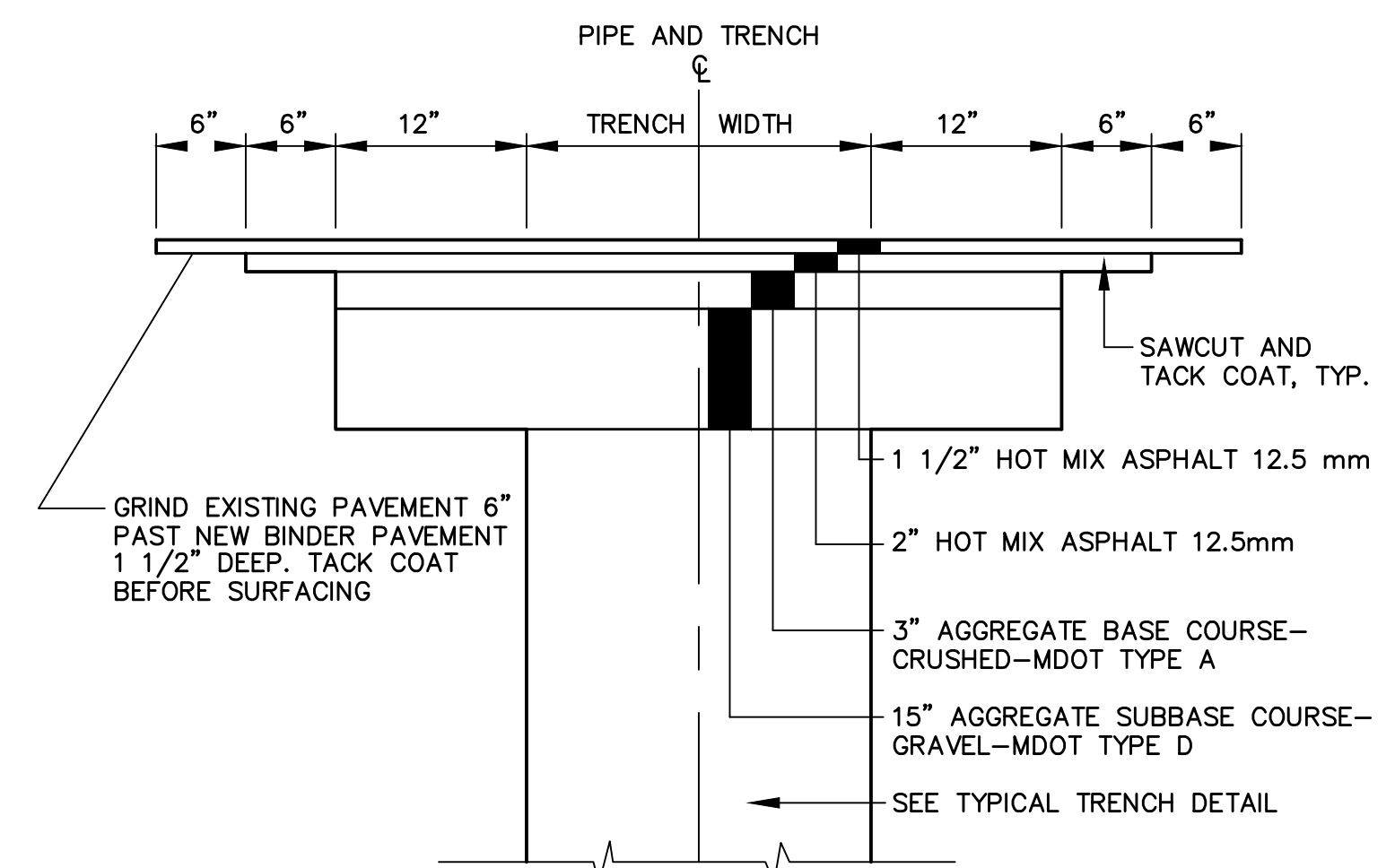
BITUMINOUS SIDEWALK DETAIL AT DRIVEWAY CROSSINGS
NOT TO SCALE



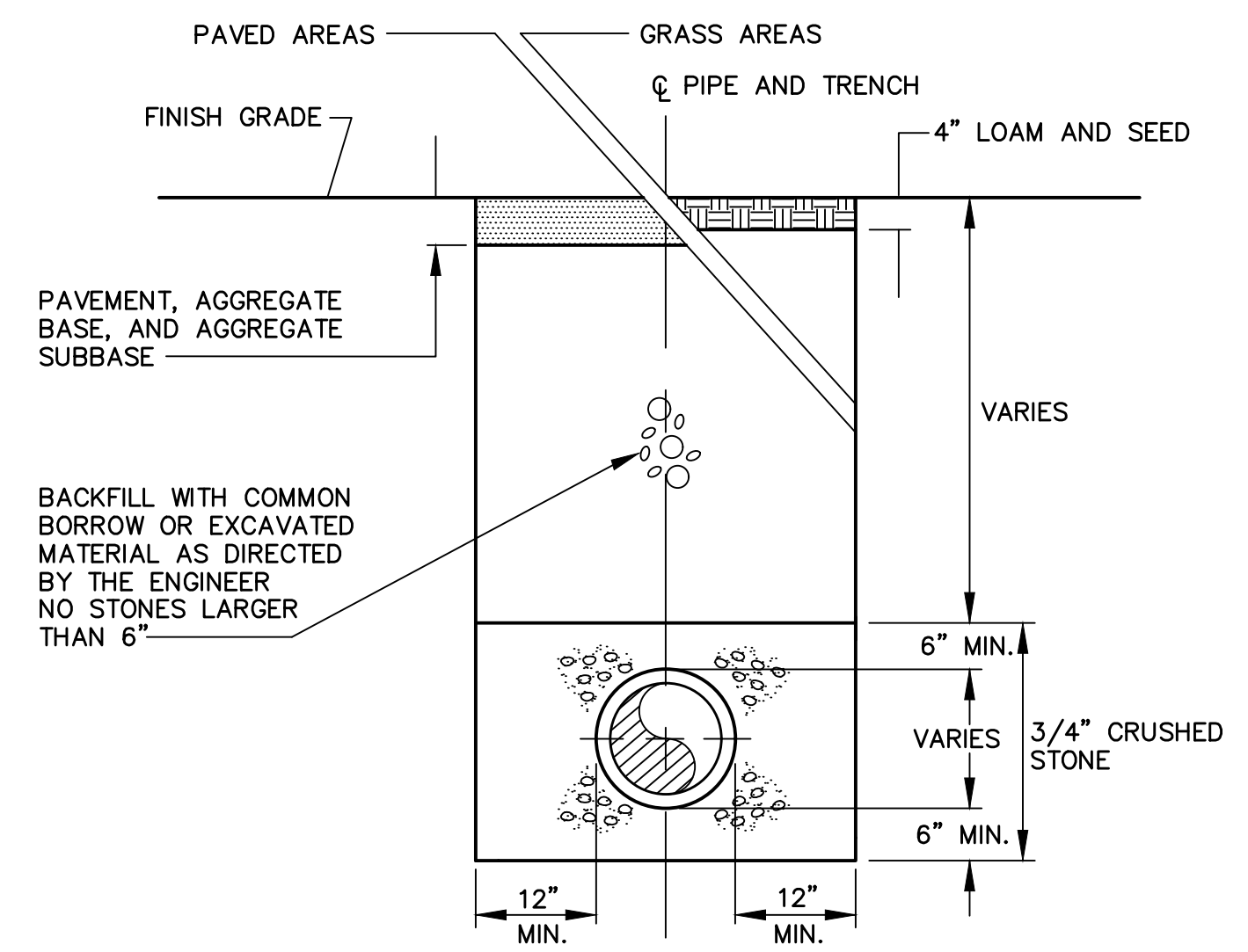
BITUMINOUS SIDEWALK
NOT TO SCALE



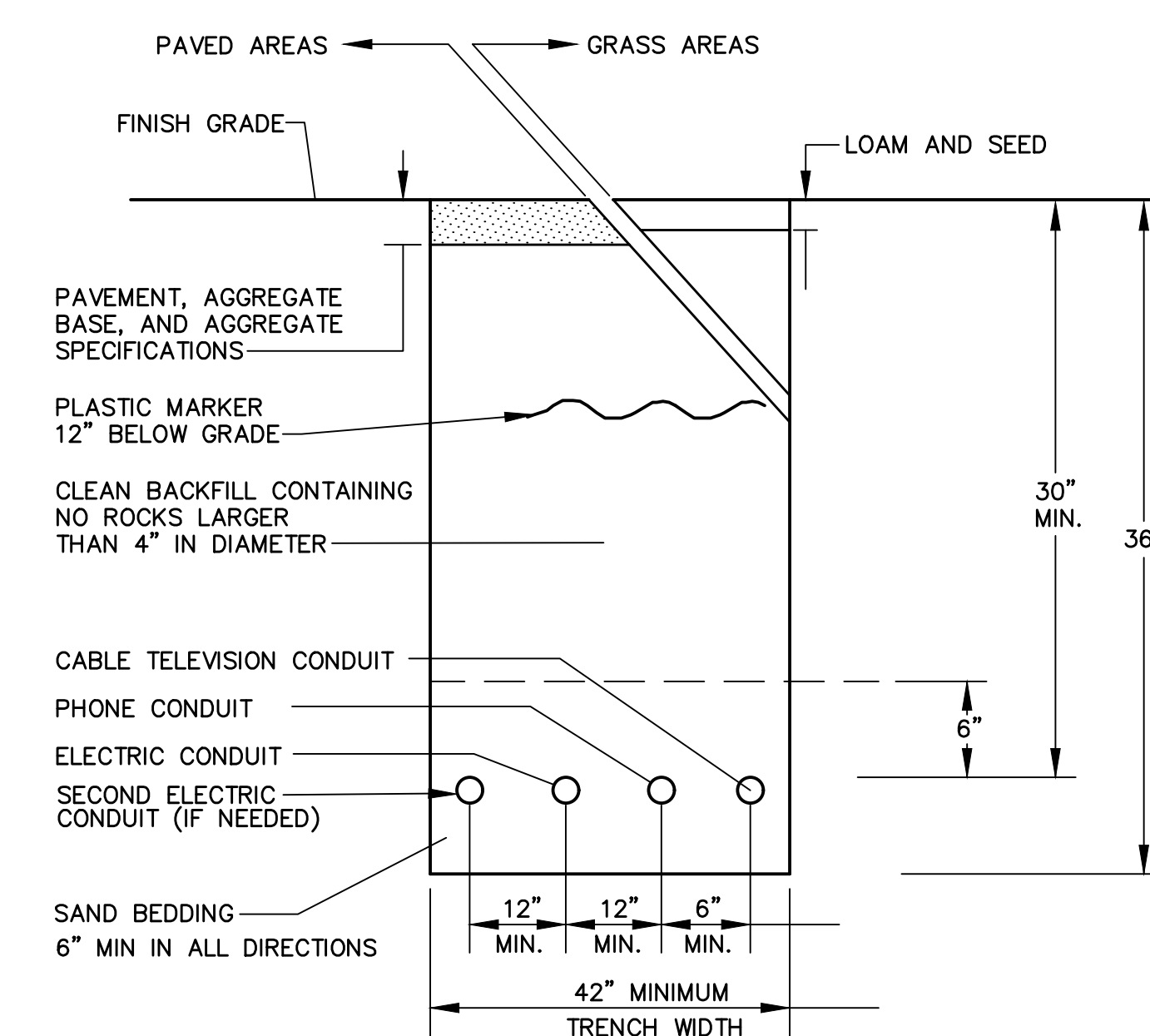
STREET LIGHTING CONDUIT TRENCH DETAIL
NOT TO SCALE



TYPICAL TRENCH PAVING DETAIL
NOT TO SCALE



TYPICAL PIPE TRENCH DETAIL
NOT TO SCALE



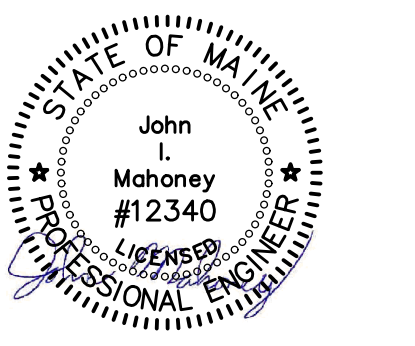
UNDERGROUND ELECTRIC/COMMUNICATIONS UTILITY TRENCH DETAIL
NOT TO SCALE

Project:
MONTE'S FINE FOODS
788 WASHINGTON AVENUE
PORTLAND, MAINE

Applicant:
Quattrucci & Rouda, LLC
109 Sheridan Street
Portland, Maine 04101
207-939-5616
stevequattrucci@gmail.com



Civil Engineer
Ransom Consulting, Inc.
400 Commercial Street, Suite 404
Portland, Maine 04101
207-772-2891



CIVIL DETAILS		
No.	Revision/Issue	Date
C	BUILDING PERMIT	8-7-18
B	BUILDING PERMIT	7-17-18
A	PERMITTING	6-8-18
Design by: JIM Checked by: SJB		
Drawn by: JIM Approved by: SJB		
Project: 181.06031		
Sheet No: C4		

FOR PERMITTING