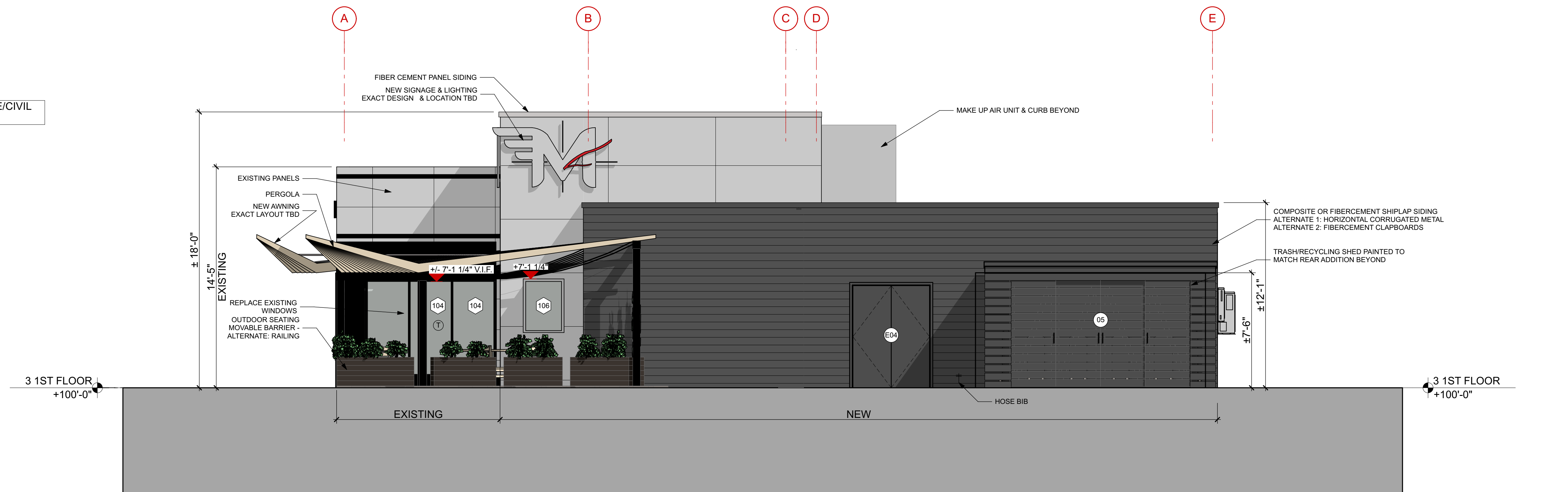
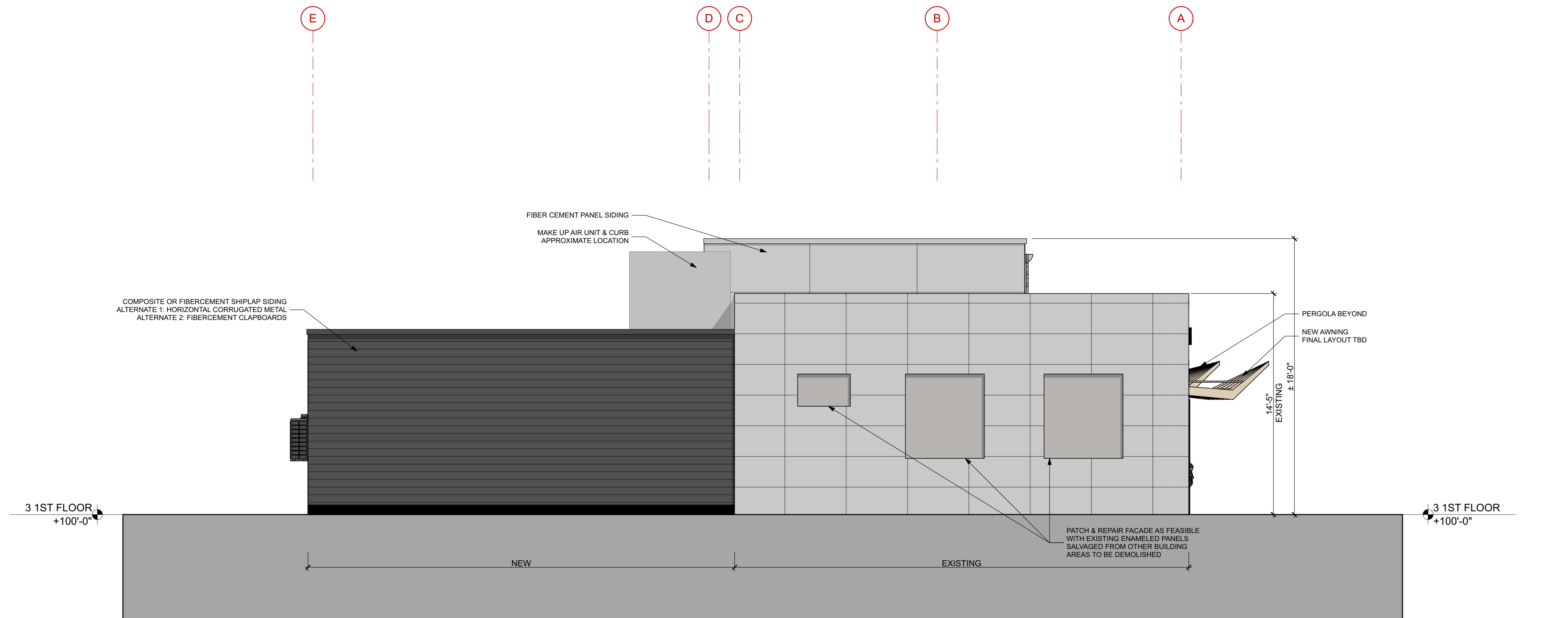


KEY	
T	TEMPERED

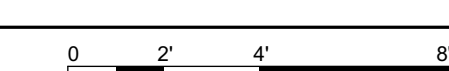
NOTE: T.O. SLAB = 100'-0" (REF.) = 62.2' (SEE SITE/CIVIL DRAWINGS) GC TO VERIFY



1 BUILDING ELEVATION - EAST  
SCALE: 1/4" = 1'-0"



2 BUILDING ELEVATION - WEST  
SCALE: 1/4" = 1'-0"



**Kaplan Thompson Architects**  
102 Exchange Street  
Portland, ME 04101  
(207) 842-2888  
kaplanthompson.com

PROJECT  
**MONTE'S FINE FOODS**

788 Washington Ave  
Portland, ME 04103

STRUCTURAL  
**L & L Structural Engineering Services, Inc.**  
6 Q Street  
South Portland, ME 04106  
p: (207) 767-4830

CIVIL  
**Ransom Consulting, Inc.**  
400 Commercial Street, Suite 404  
Portland, ME 04101  
p: (207) 772-2891

MECHANICAL | ELECTRICAL  
**Spark Applied Efficiency**  
29 Vincent Street #1,  
South Portland, ME 04106  
p: (207) 323-1805

PLUMBING  
**Ripcord Engineering Inc.**  
PO Box 4175  
Portland, ME 04101  
p: (207) 835-4060



NOT FOR CONSTRUCTION

PROJECT	QTR
DATE	07/12/18
REVISED 1	
REVISED 2	
DRAWN BY	CA/DF
PHASE	FOR PERMIT

BUILDING ELEVATIONS  
**A-2.2**