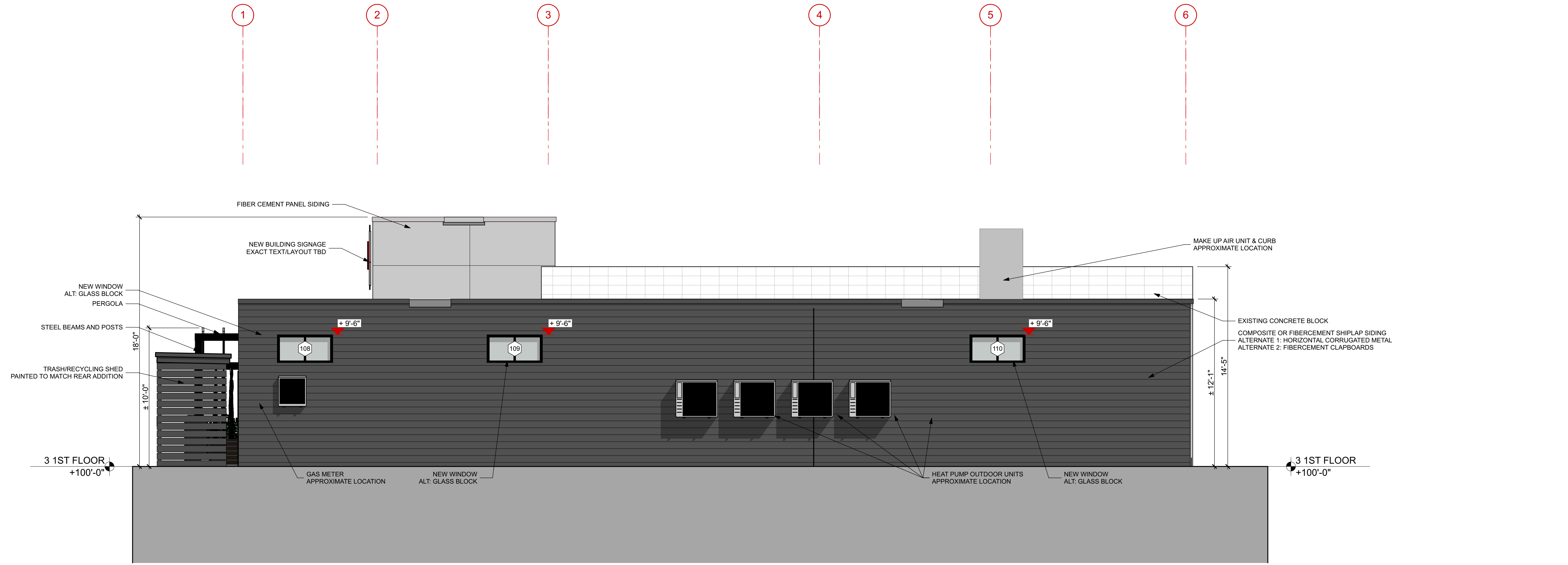


KEY	
T	TEMPERED

NOTE: T.O. SLAB = 100'-0" (REF.) = 62.2' (SEE SITE/CIVIL DRAWINGS) GC TO VERIFY



1 BUILDING ELEVATION - NORTH
SCALE: 1/4" = 1'-0"



2 BUILDING ELEVATION - SOUTH
SCALE: 1/4" = 1'-0"

PROJECT
MONTE'S FINE FOODS

788 Washington Ave
Portland, ME 04103

STRUCTURAL
L & L Structural Engineering Services, Inc.
6 Q Street
South Portland, ME 04106
p: (207) 767-4830

CIVIL
Ransom Consulting, Inc.
400 Commercial Street, Suite 404
Portland, ME 04101
p: (207) 772-2891

MECHANICAL | ELECTRICAL
Spark Applied Efficiency
29 Vincent Street #1,
South Portland, ME 04106
p: (207) 333-1805

PLUMBING
Ripcord Engineering Inc.
PO Box 4175
Portland, ME 04101
p: (207) 835-4060



NOT FOR CONSTRUCTION

PROJECT	QTR
DATE	07/12/18
REVISED 1	
REVISED 2	
DRAWN BY	CA/DF
PHASE	FOR PERMIT