

AHARONIAN
& ASSOCIATES INC.
ARCHITECTS

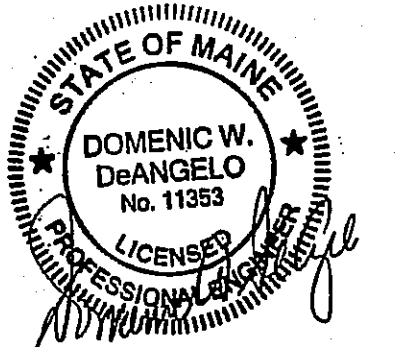
310 George Washington Highway
Suite 100
Smithfield, Rhode Island
0 2 9 1 7
T 401-232-5010
F 401-232-5080
WWW.ARCH-ENG.COM

DISCLAIMER

OWNERSHIP AND USE OF DOCUMENTS, DRAWINGS AND SPECIFICATIONS ARE INSTRUMENTS OF PROFESSIONAL SERVICE AND SHALL REMAIN THE PROPERTY OF THE ARCHITECT. THESE DOCUMENTS ARE NOT TO BE USED, IN WHOLE OR IN PART, FOR ANY OTHER PROJECTS OR PURPOSES OR BY ANY OTHER PARTIES THAN THOSE PROPERLY AUTHORIZED BY CONTRACT WITHOUT THE EXPRESS WRITTEN AUTHORIZATION OF THE ARCHITECT.

REVISIONS

NUMBER	REMARKS	DATE



FOR CONSTRUCTION

PROJECT TITLE
Cumberland FARMS
100 Crossing Blvd, Framingham, Massachusetts
STORE # 5604
V1079

801 WASHINGTON AVE
PORTLAND, ME
Cumberland County

DRAWING TITLE

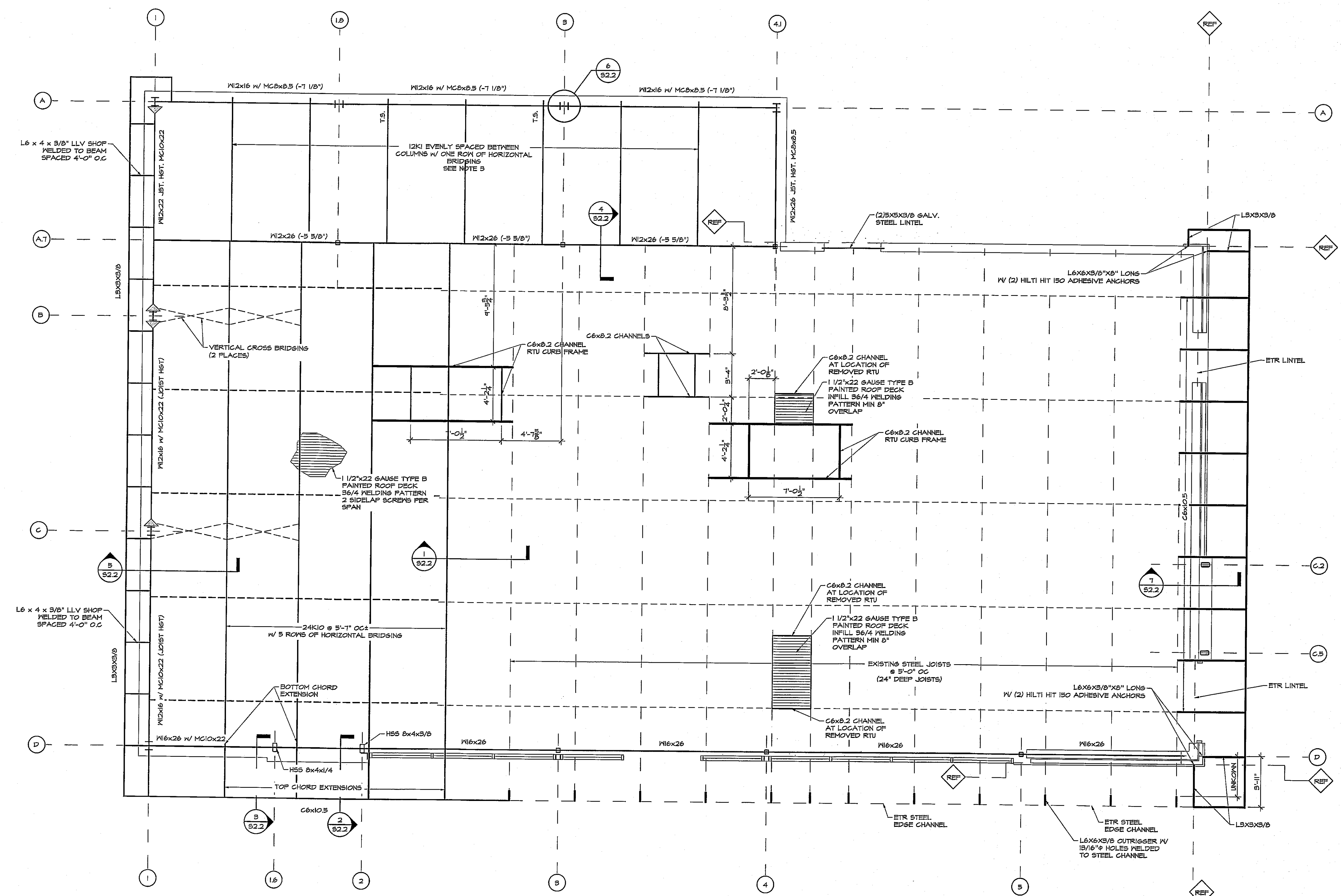
ROOF FRAMING PLAN

DATE JULY 19, 2012	PROJ NO 11112
DRAWN BY JD	CHECKED BY AZ

DRAWING NUMBER

S1.2

NOTE
1) TOP OF STEEL EL. 12'-1 1/2" UNLESS NOTED (4'-0")
2) DENOTES MOMENT CONNECTION- SEE DETAIL ON S2.2
3) JOISTS SHALL BE DESIGN FOR A NEW UPLIFT OF 16 PSF WITHIN 10 FEET OF ALL BUILDING EDGES AND 8 PSF ELSEWHERE.



FRAMING PLAN
SCALE: 1/4" = 1'-0"
PLAN

© AHARONIAN & ASSOCIATES INC 2012