



AHARONIAN & ASSOCIATES INC. ARCHITECTS

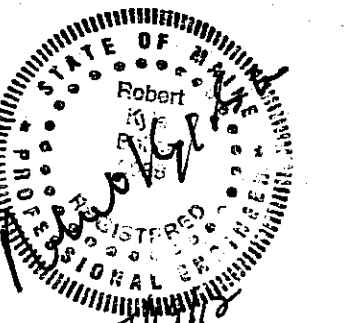
310 George Washington Highway
Suite 100
Smithfield, Rhode Island
0 2 9 1 7
T 401-232-5010
F 401-232-5080
WWW.ARCH-ENG.COM

DISCLAIMER

OWNERSHIP AND USE OF DOCUMENTS, DRAWINGS AND SPECIFICATIONS ARE INSTRUMENTS OF PROFESSIONAL SERVICE AND SHALL REMAIN THE PROPERTY OF THE ARCHITECT. THESE DOCUMENTS ARE NOT TO BE USED, IN WHOLE OR IN PART, FOR ANY OTHER PROJECTS OR PURPOSES OR BY ANY OTHER PARTIES THAN THOSE PROPERLY AUTHORIZED BY CONTRACT WITHOUT THE EXPRESS WRITTEN AUTHORIZATION OF THE ARCHITECT.

REVISIONS

NUMBER	REMARKS	DATE



FOR CONSTRUCTION

PROJECT TITLE

Cumberland Farms
100 Crossing Blvd, Framingham, Massachusetts
STORE # 5604
V1079

801 WASHINGTON AVE
PORTLAND, ME
Cumberland County

DRAWING TITLE

PLUMBING DETAILS

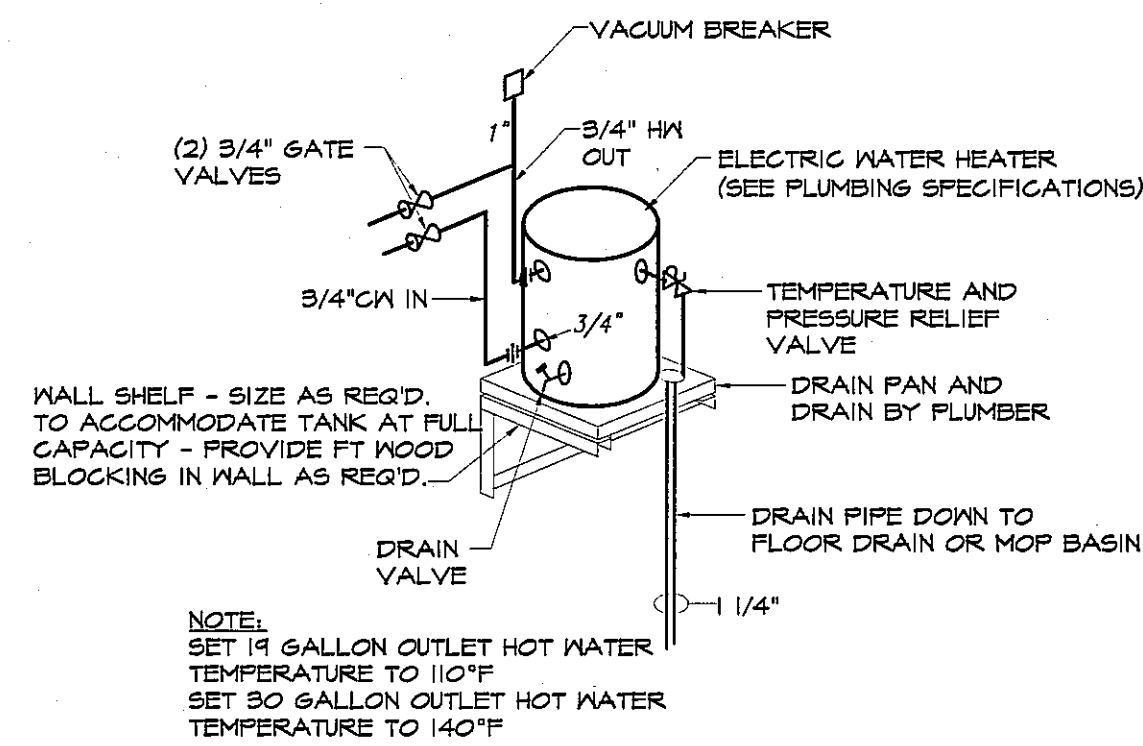
DATE JULY 19, 2012	PROJ NO 11112
DRAWN BY JL	CHECKED BY AZ

DRAWING NUMBER

P2.1

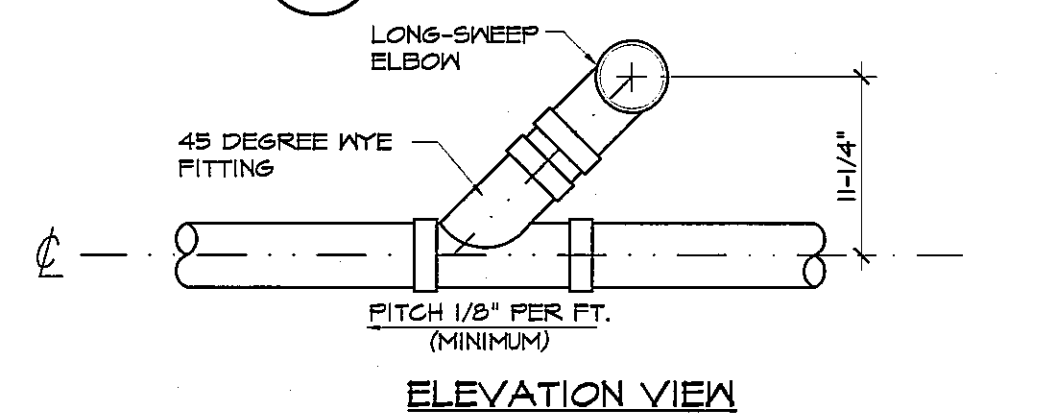
PLUMBING NOTES

- 1) THE PLUMBING CONTRACTOR SHALL COORDINATE ALL WORK TO BE PERFORMED WITH THE GENERAL, HVAC AND ELECTRICAL CONTRACTORS. ANY WORK DONE BY THIS CONTRACTOR WHICH INTERFERES WITH WORK BY OTHERS AND WHICH WAS NOT FIRST COORDINATED SHALL BE REMOVED AND RELOCATED AT PLUMBING CONTRACTOR'S EXPENSE.
- 2) THIS CONTRACTOR SHALL BE RESPONSIBLE FOR VERIFICATION OF ALL UTILITIES AND THE PLACEMENT OF ALL PLUMBING EQUIPMENT PRIOR TO THE START OF HIS WORK. NO EXTRAS WILL BE ALLOWED DUE TO EQUIPMENT LOCATION CHANGE FROM THAT ON THE DRAWINGS.
- 3) IT IS THE INTENT THAT THE WORK SHALL BE COMPLETE IN EVERY RESPECT AND THAT ANY MATERIAL OR WORK NOT SPECIFICALLY MENTIONED OR SHOWN ON THE DRAWINGS BUT NECESSARY TO FULLY COMPLETE THE WORK SHALL BE PROVIDED. THE LOCATION OF SOME ITEMS SHOWN ON THE DRAWINGS MAY BE APPROXIMATE AND THE OWNER SHALL HAVE THE RIGHT TO MAKE MINOR REVISIONS BEFORE THE WORK IS INSTALLED WITHOUT ADDITIONAL COST.
- 4) ALL WORK SHALL BE IN STRICT ACCORDANCE WITH ALL APPLICABLE CODES AND OWNER'S MINIMUM REQUIREMENTS. WHERE CONFLICTS OCCUR, THE MOST STRINGENT REQUIREMENTS SHALL BE MET.
- 5) THIS CONTRACTOR SHALL FURNISH AND INSTALL ALL NECESSARY VALVES, TRAPS AND ALL CONTROL DEVICES REQUIRED FOR PROPER COMPLETION OF UTILITY PIPING.
- 6) STORM, WASTE AND VENT PIPING SHALL BE CAST IRON. HOWEVER, PVC PIPING MAY BE USED WHENEVER PERMITTED BY OWNER AND LOCAL AUTHORITY, IF APPROVED BY ARCHITECT/ENGINEER (PRIOR TO INSTALLATION).
- 7) WATER PIPING SHALL BE TYPE "L" COPPER WITH LEAD-FREE SOLDER JOINTS AND NON-CORROSIVE LEAD-FREE FLUX.
- 8) DOMESTIC WATER PIPING SHALL BE INSULATED WITH A MINIMUM OF 1/2" FIBERGLASS INSULATION HAVING A VAPOR BARRIER JACKET WITH SEALED JOINTS.
- 9) ALL WATER PIPING SHALL BE CONCEALED WITHIN A WALL OR PIPE CHASE EXCEPT FOR THOSE CHROME PLATED PORTIONS THAT ARE REQUIRED TO MAKE FINAL CONNECTIONS TO PLUMBING FIXTURES.
- 10) PROVIDE CHROME PLATED ESCUTCHEONS WHERE PIPES PENETRATE FLOORS, WALLS OR CEILINGS.
- 11) ALL WATER SUPPLIES TO FIXTURES OR GROUP OF FIXTURES MUST INCLUDE WATER HAMMER ARRESTORS, SIZED IN ACCORDANCE WITH P.D.I. STANDARDS. AIR CHAMBERS WILL BE ALLOWED AS AN ACCEPTABLE ALTERNATE.
- 12) PROVIDE WATER SUPPLY TO THE COFFEE COUNTER & CHILLZONE AND CONNECT TO ALL EQUIPMENT. A 3/4" PIPE IS TYPICALLY RUN ABOVE THE CEILING TO THE COFFEE BAR LOCATION. A MANIFOLD IS SET UP ON THE HALL BEHIND THE BASE CABINETS FOR FINAL CONNECTIONS. HOOK-UPS ARE 1/2" PIPE WITH BALL VALVE SHUT OFFS WITH 9/8" BARBS FOR CONNECTION TO THE EQUIPMENT USING FLEXIBLE PIPE. -HOOK-UPS ARE REQUIRED FOR THE FOLLOWING EQUIPMENT (REFER TO PLANS FOR EQUIPMENT LOCATIONS):
CAPPUCCINO MACHINE, COFFEE BREWERS, INSTANT HOT WATER DISPENSER, SODA FOUNTAIN, ICE MAKER, FREAL BLENDER, FROZEN CARBONATED BEVERAGE FREEZER.
- 13) PROVIDE & INSTALL 1 BACKFLOW PREVENTER FOR THE ICE MAKER, 1 FOR THE COFFEE COUNTER & 1 FOR THE CHILL ZONE. (ALL BACKFLOW PREVENTERS TO BE ASSE-1022 BACKFLOW PREVENTERS)
- 14) INSTALL WATER FILTRATION SYSTEM. REFER TO SCHEMATIC LAYOUT FOR DETAILS. ENSURE THAT THE WATER PRESSURE COMING INTO THE FILTRATION SYSTEM IS LESS THAN TO PSI. IF WATER PRESSURE IS GREATER THAN TO PSI, INSTALL A PRESSURE REDUCING VALVE. A PRESSURE REDUCING VALVE IS TO BE PRESENT AT ANY JOB SITE. INCLUDE ALL COSTS ASSOCIATED WITH PROVIDING AND INSTALLING VALVE WITHIN THE BID.

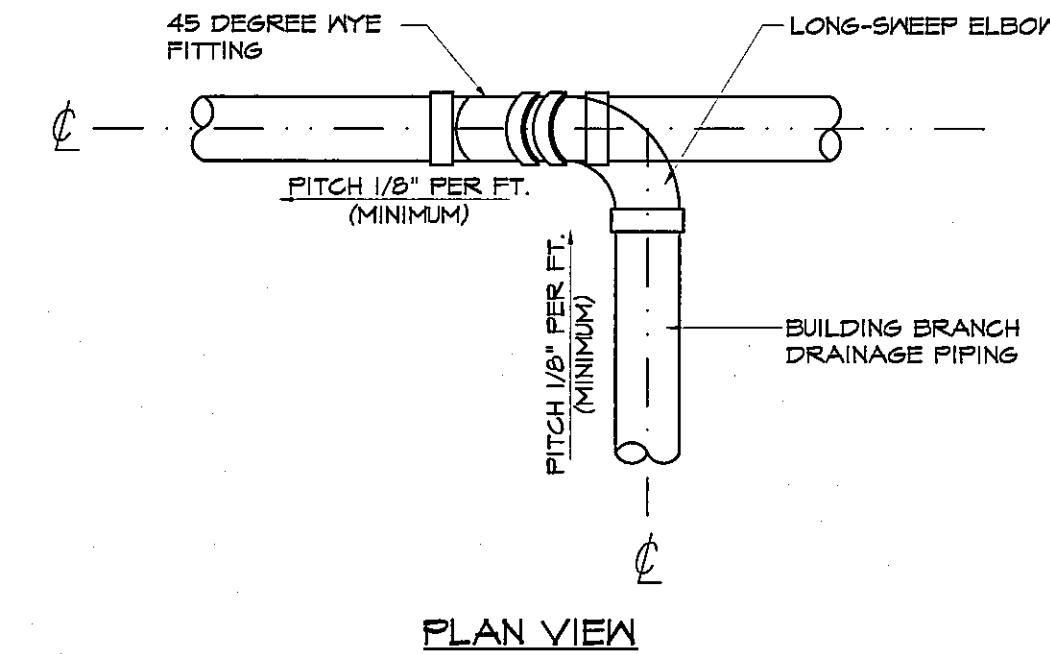


DOMESTIC WATER HEATER DETAIL

SCALE: NO SCALE



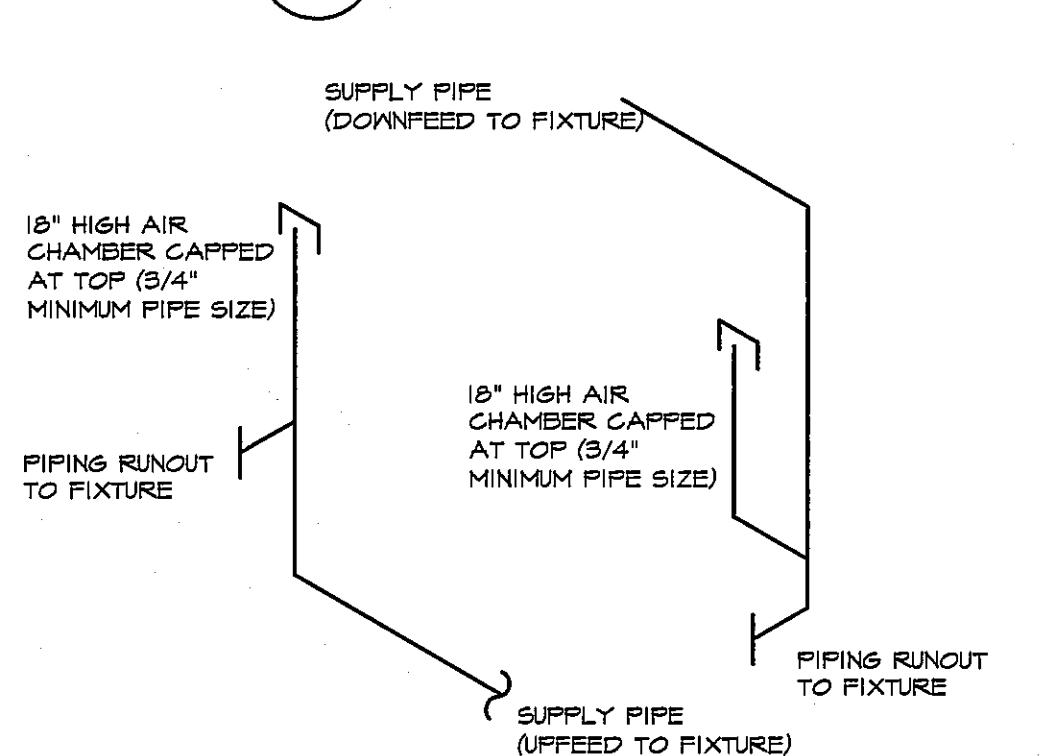
ELEVATION VIEW



PLAN VIEW

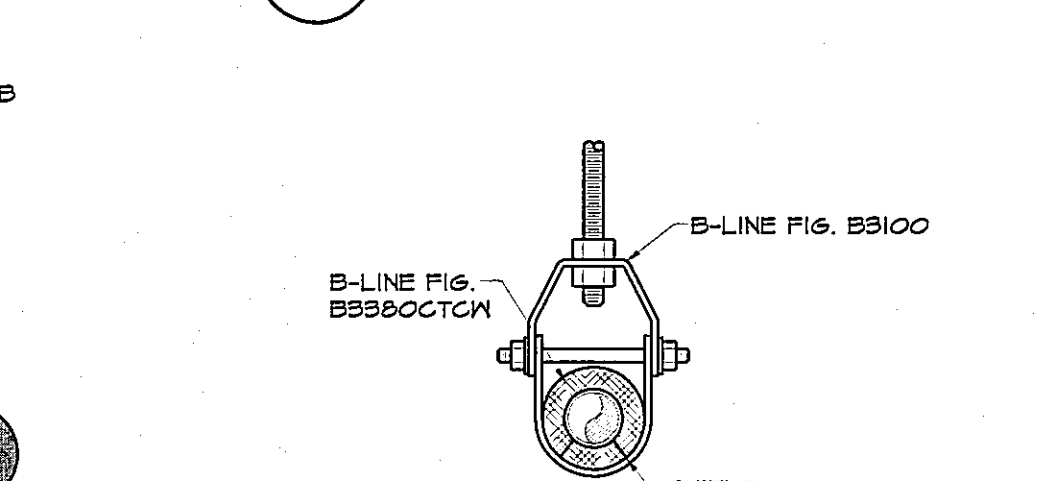
DRAINAGE PIPING BRANCH CONN DETAIL

SCALE: NO SCALE



FIXTURE RUNOUT AIR CHAMBER DETAIL

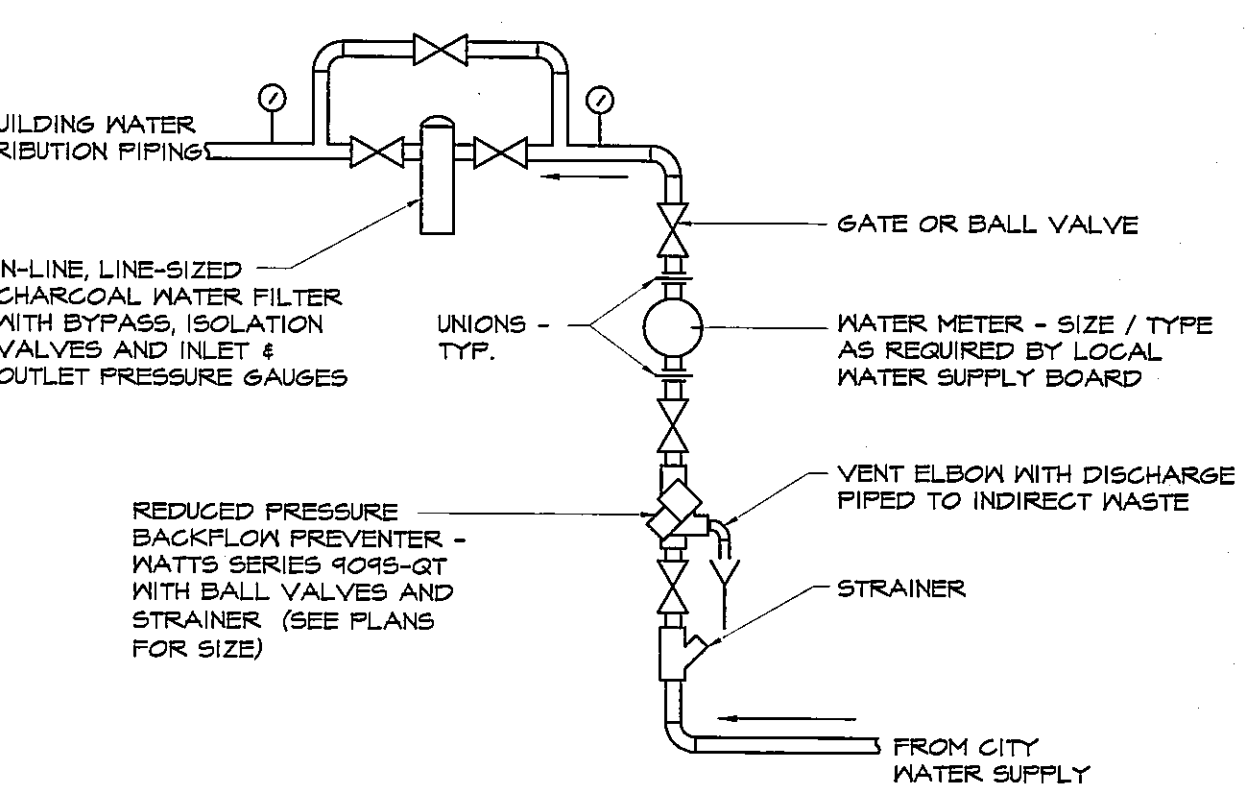
SCALE: NO SCALE



NOTES:
1) SIZE HANGER TO ADEQUATELY SUPPORT LOAD (REFER TO B-LINE HANGER CATALOGS).
2) SIZE CALCIUM SILICATE SHIELD TO FIT PIPE AND INSULATION THICKNESS.
3) SIZE HANGER TO FIT B99800CM CALCIUM SILICATE SHIELDS.

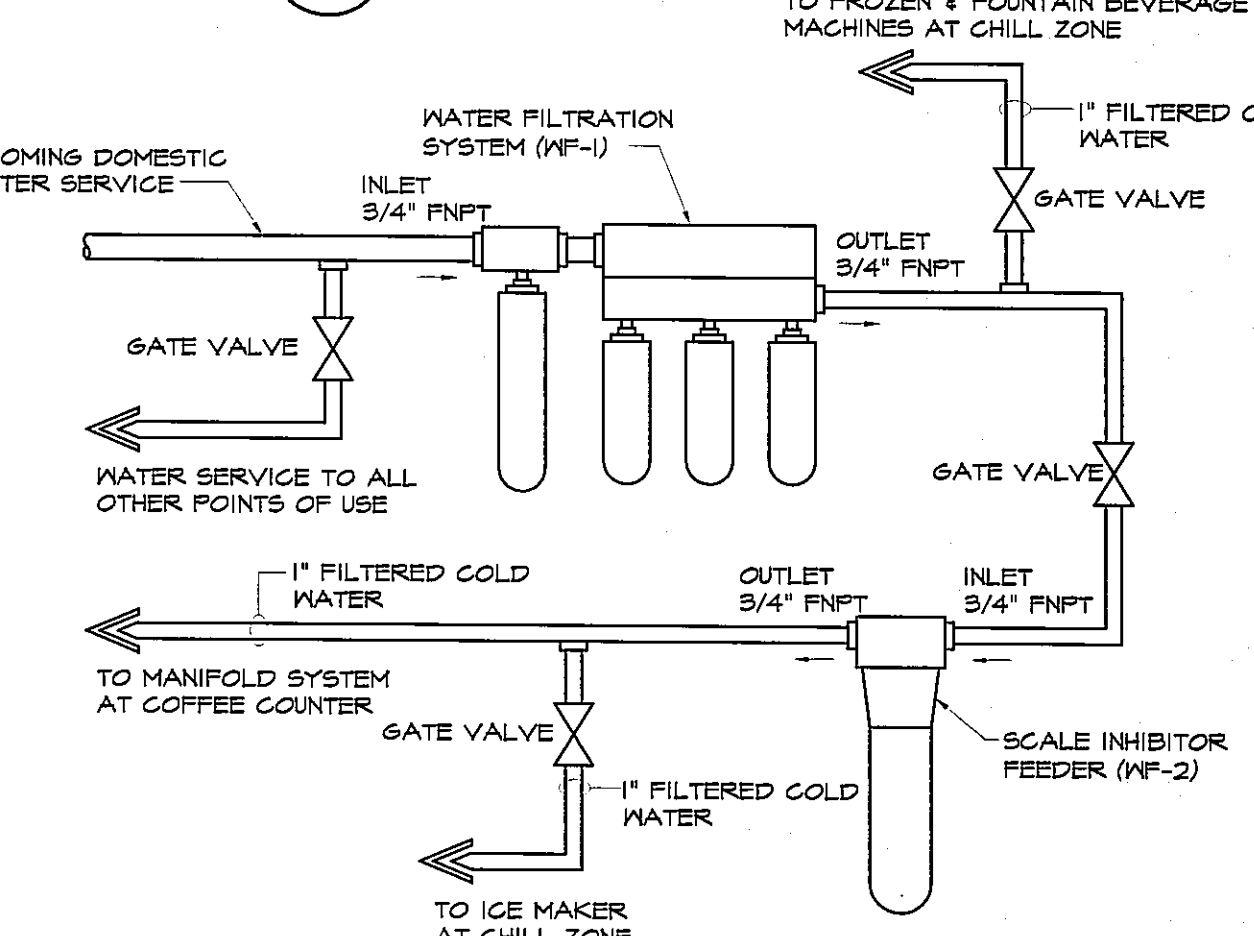
PIPE HANGER DETAIL

SCALE: NO SCALE



WATER SERVICE PIPING DETAIL

SCALE: NO SCALE

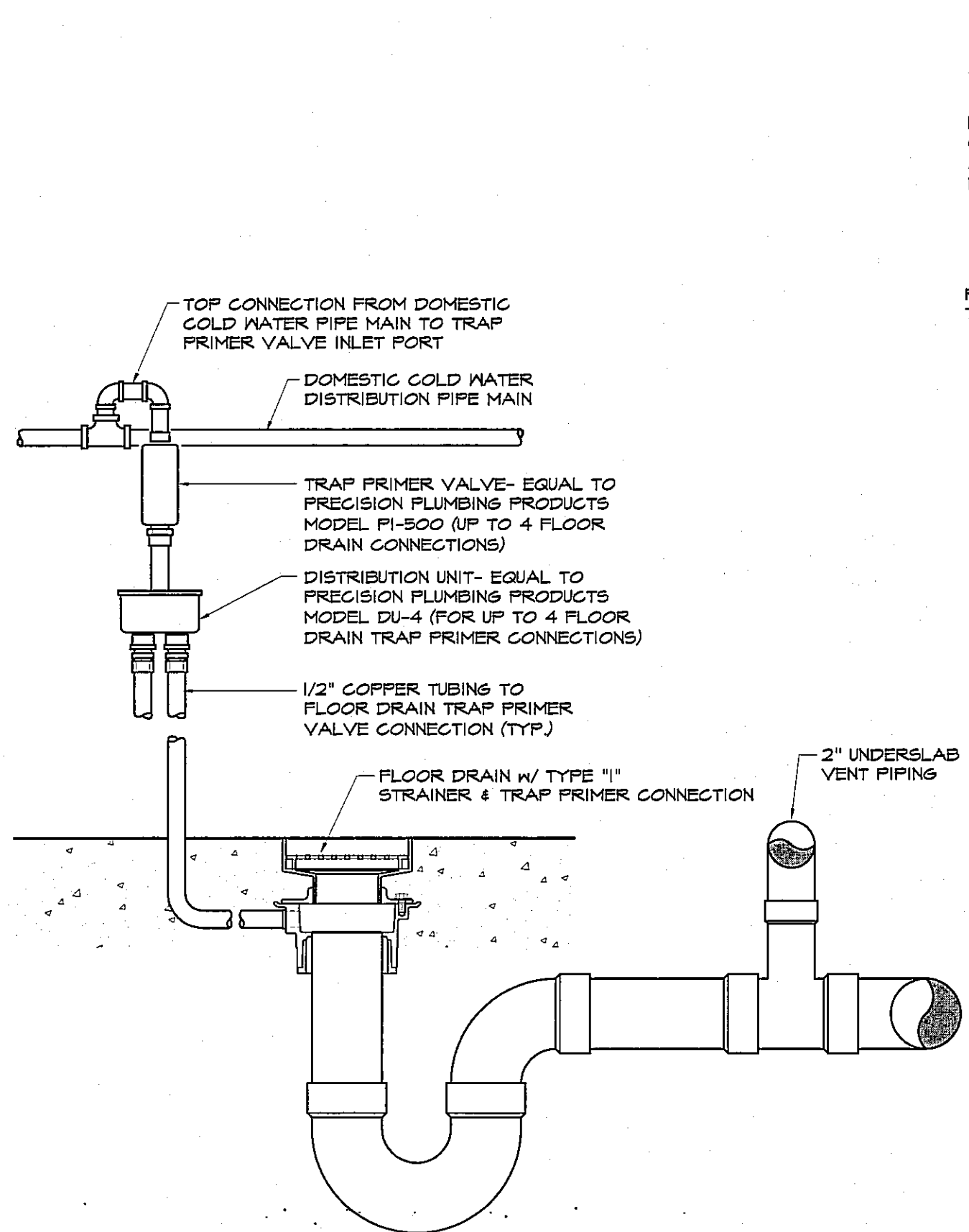


WATER FILTRATION SYSTEM DETAIL

SCALE: NO SCALE

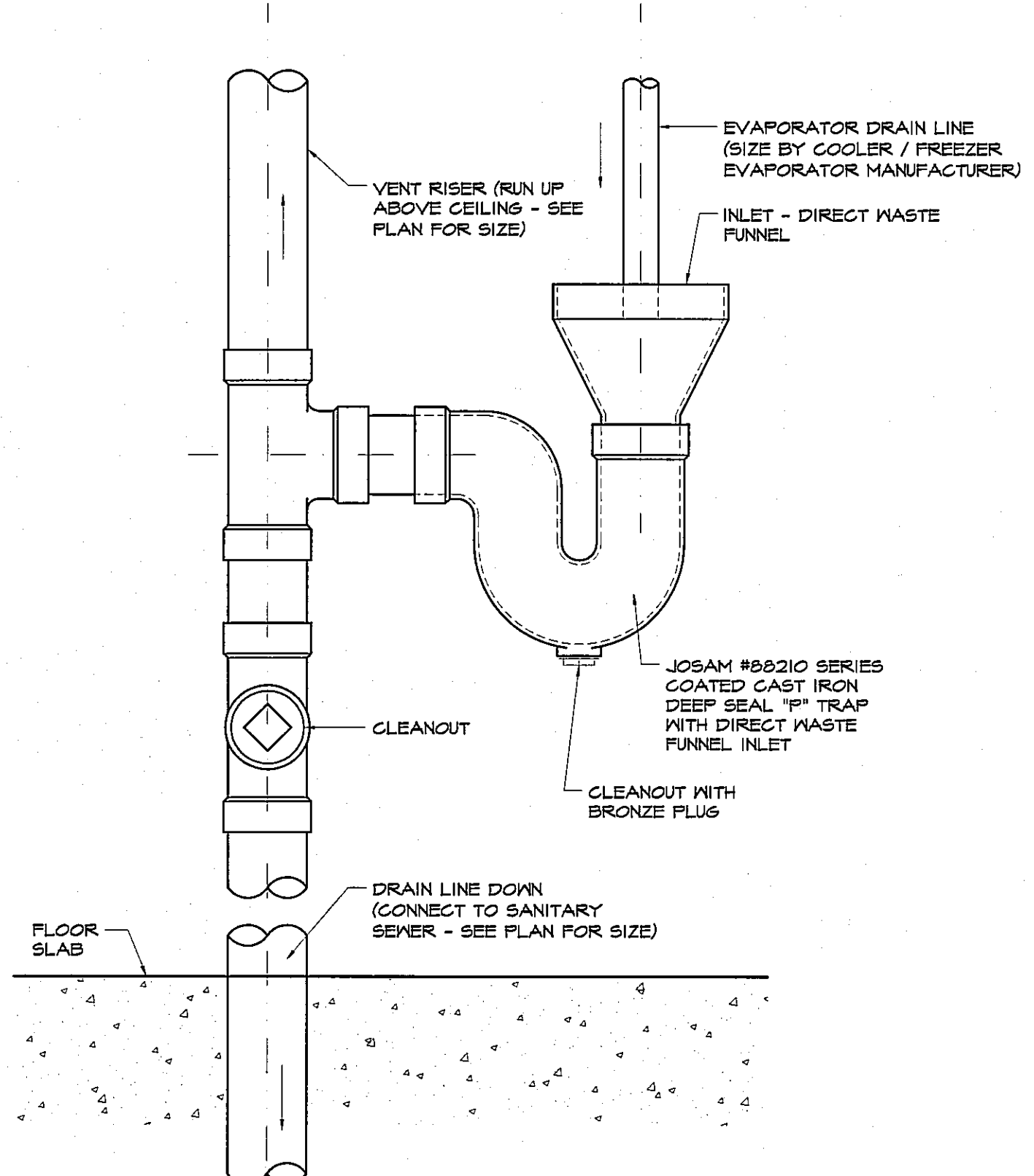
INTERIOR CLEAN-OUT DETAIL

SCALE: NO SCALE



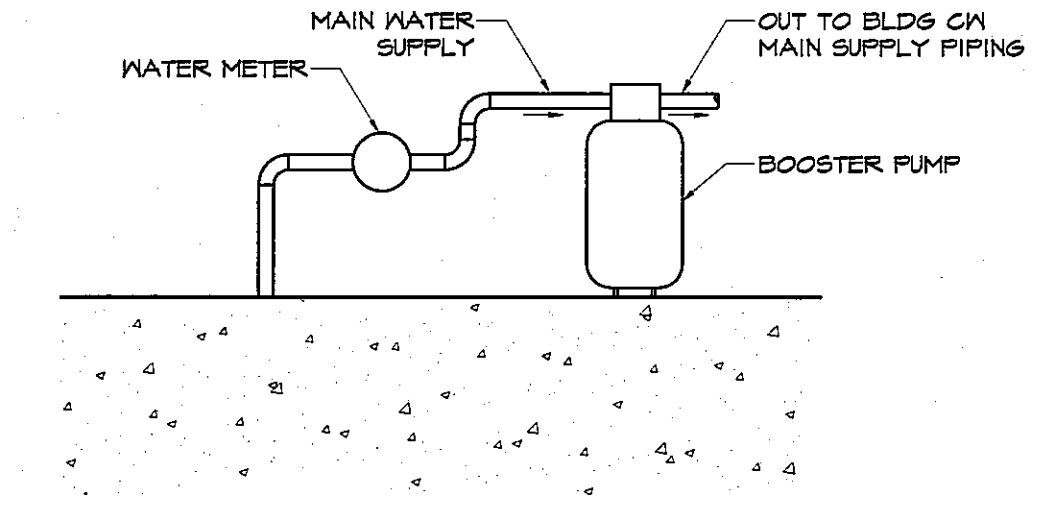
TRAP PRIMER VALVE PIPING DETAIL

SCALE: NO SCALE



INDIRECT DRAIN DETAIL

SCALE: NO SCALE



BOOSTER PUMP DETAIL

SCALE: NO SCALE

© AHARONIAN & ASSOCIATES INC 2012