

PLUMBING PRODUCT SPECIFICATIONS

WATER CLOSET (P-1)
 BOWL MEETS ADA GUIDELINES & ANSI A11.1; FLOOR MOUNTED VITREOUS CHINA CLOSET BOWL, WITH ELONGATED BOWL, CHINA BOLT CAPS, SIPHON JET FLUSHING, 1.28 GPF; MODEL #C7102BLN; COLOR: #01 COTTON MANUFACTURED BY TOTO.
 FLUSH VALVE: AUTOMATIC INFRARED SENSOR ACTIVATED, PISTON TOILET FLUSH VALVE, HEAVY-DUTY ZINC DIE CAST COVER WITH NICKEL CHROME FINISH; VANDAL RESISTANT HEX HEAD SCREWS, MANUAL OVERRIDE BUTTON, ANGLE STOP AND VACUUM BREAKER INCLUDED; MODEL #TET16NC-32; MANUFACTURED BY TOTO.
 SEAT: HIGH IMPACT SOLID PLASTIC OPEN FRONT TOILET SEAT WITH COVER FOR ELONGATED BOWL, ONE PIECE STAINLESS STEEL CONCEALED HINGES; MODEL #SC184; COLOR: #01 COTTON, MANUFACTURED BY TOTO.

LAVATORY (P-2)
 BASIN: ANSI A11.1; ASME A112.19.2M; VITREOUS CHINA UNGLAZED RIM FOR UNDER COUNTER MOUNT, 14 1/4 INCH BY 15 3/4 INCH, DRILLINGS ON 4 INCH CENTER; MODEL "OVALYN UNIVERSAL ACCESS" #4482.000; COLOR: WHITE; MANUFACTURED BY AMERICAN STANDARD.
 TRIM: MEETS ADA GUIDELINES & ANSI A11.1; AUTOMATIC INFRARED SENSOR ACTIVATED FAUCET, SINGLE HOLE W/ OPTIONAL 4" CC COVER PLATE, ANTI-SCALD, THERMAL MIXING CHAMBER, AUTOMATIC SENSOR ADJUSTMENT ON INSTALLATION, MAX DISCHARGE: 0.11 GALLONS PER 10% CYCLE; MODEL #TE16SC; DURATION AS SELECTED BY OWNER; MANUFACTURED BY TOTO.

URINAL (P-3)
 MEETS ADA GUIDELINES & ANSI A11.1; HIGH EFFICIENCY 0.5 GPF; MODEL #UT44TE TOP SPUD; COLOR: WHITE; MANUFACTURED BY TOTO.
 FLUSH VALVE: AUTOMATIC INFRARED SENSOR ACTIVATED, PISTON TOILET FLUSH VALVE, HEAVY-DUTY ZINC DIE CAST COVER WITH NICKEL CHROME FINISH; VANDAL RESISTANT HEX HEAD SCREWS, MANUAL OVERRIDE BUTTON, ANGLE STOP AND VACUUM BREAKER INCLUDED; MODEL #TET16NC-42; MANUFACTURED BY TOTO.

MOP BASIN (P-4)
 FLAT MODEL #MSB-2424 WITH MODEL 880-AA FAUCET W/ 0.50 GPM AERATOR.

THREE BAY SINK (P-5)
 ADVANCED TABCO MODEL #FG3-1018-18 R OR L WITH T & S BRASS MODEL #T5B1589 FAUCET WITH SPRAY AND MODEL #T5B156 SPOUT WITH DIFFUSER W/ 0.50 GPM AERATOR.

CUSTOMER SERVICE SINK (P-6)
 ADVANCE TABCO MODEL #DI-110 PROVIDED BY MILLWORK SUPPLIER (ORION)

CASHIER AREA SINK (P-7)
 DELFIELD MODEL #201TGF81

UTILITY HAND SINK (P-8)
 12" X 16" STAINLESS STEEL WALL MOUNT HAND SINK #1-PS-23 WITH BOLT-ON STAINLESS STEEL SIDE SPLASHES #1-PS-21 AS MANUFACTURED BY ADVANCE TABCO. SPLASH MOUNT GOOSENECK FAUCET WITH WRIST HANDLES, 3/8" CHROME SUPPLIES W/ ANGLE STOPS, ADJUSTABLE "P" BRASS TRAP TO SUIT DRAIN, TUBING DRAIN TO WALL, 1 1/4" IN. INLET, 1 1/2" OUTLET, ESCUTCHEON - CHROME FINISH

DOMESTIC WATER HEATER (P-9)
 12 GALLON WATER HEATER BRADFORD WHITE CORP. MODEL # M-2-40-62S (LIGHT DUTY WALL HUNG COMMERCIAL ELECTRIC)

DOMESTIC WATER HEATER (P-10)
 40 GALLON WATER HEATER BRADFORD WHITE CORP. MODEL # LD-40-8-9000 (LOWBOY LIGHT DUTY COMMERCIAL ELECTRIC)

AUTOMATIC CONDENSATE REMOVAL PUMP (P-11)
 NOT USED

WALL HYDRANT (P-12)
 ZURN MODEL #Z-1320-12-15 (3 GAL PER MINUTE AVERAGE)

FLOOR SINK (P-13)
 JAY R. SMITH MFG. CO. - SANI-CEPTOR WASTE DRAIN MODEL #3100Y-14 W/ NB RIM AND 2 1/2" SQ CENTER HOLE AND 1/2" TRAP PRIMER CONNECTION.

FLOOR DRAIN (P-14)
 ZURN MODEL #24155 WITH TYPE "B" STRAINER AND 1/2" TRAP PRIMER CONNECTION

GREASE TRAP (P-15)
 AS REQUIRED - PROVIDE GREASE TRAP IN CONFORMANCE WITH LOCAL REQUIREMENTS - CONTRACTOR TO PROVIDE P-TRAP ON THE INLET SIDE OF THE GREASE TRAP WHERE ALLOWED BY LOCAL PLUMBING CODE

INDIRECT DRAIN (P-16)
 SEE DETAIL 9/P2.1

BOOSTER PUMP/PRESSURE TANK (P-17)
 PRESSURISER #RP-25HP AS MANUFACTURED BY AMTROL - SEE DETAIL 10/P2.1

WATER FILTRATION SYSTEM (WF-1)
 EVERPURE-COLDRINK 3-MC SYSTEM (EV4328-03) WITH EVERPURE-MC REPLACEMENT CARTRIDGE (EV4612-06) EVERPURE-EC210 PREFILTER CARTRIDGE (EV4934-26)

SCALE INHIBITOR FEEDER (WF-2)
 EVERPURE-SR-X FEEDER (EV4748-45) WITH EVERPURE-SS-IMP CARTRIDGE (EV4744-32)

KEYED PLAN NOTES

- 1 PROVIDE CONNECTION TO EXIST WASTE PIPING AS REQ'D
- 2 ETR GAS RISER
- 3 PROVIDE CONNECTION TO EXISTING CITY WATER SUPPLY (SEE SITE PLAN FOR LOCATION & DETAILS)
- 4 4" VENT UP TO 4" VENT THRU ROOF (SHOWN OUTSIDE FOR CLARITY - SEE A1.6 FOR LOCATION)
- 5 PROVIDE 1/2" BALL/GATE VALVE AT TERMINATION FOR "FLEX" CONNECTION TO EQUIPMENT (TYP) PROVIDE BACKFLOW PREVENTER AT EQUIPMENT CONNECTION AS REQ'D
- 6 PROVIDE 1/2" COPPER WASTE LINE FROM TRENCH DRAIN TO SINK WASTE BEFORE P-TRAP
- 7 PROVIDE 1/2" COPPER WASTE LINE FROM TRENCH DRAIN TO FLOOR SINK
- 8 1" CM DN TO MAINFOLD SYSTEM
- 9 1" CM MAINFOLD SYSTEM RUN BEHIND MILLWORK
- 10 PROVIDE COPPER DRAIN LINE FROM COOLER/FREEZER CONDENSATE TO INDIRECT DRAIN (P-16)
- 11 PROVIDE HEAT TAPE ON ALL FREEZER CONDENSATE WASTE PIPING
- 12 PROVIDE P-TRAP AT CONDENSATE OUTLET OF EVAPORATOR FAN
- 13 PIPE WATER HEATER EMERGENCY OVERFLOW TO INDIRECT DRAIN

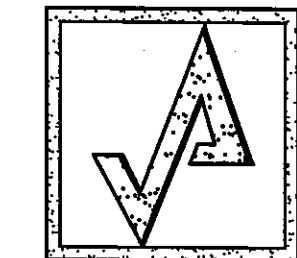
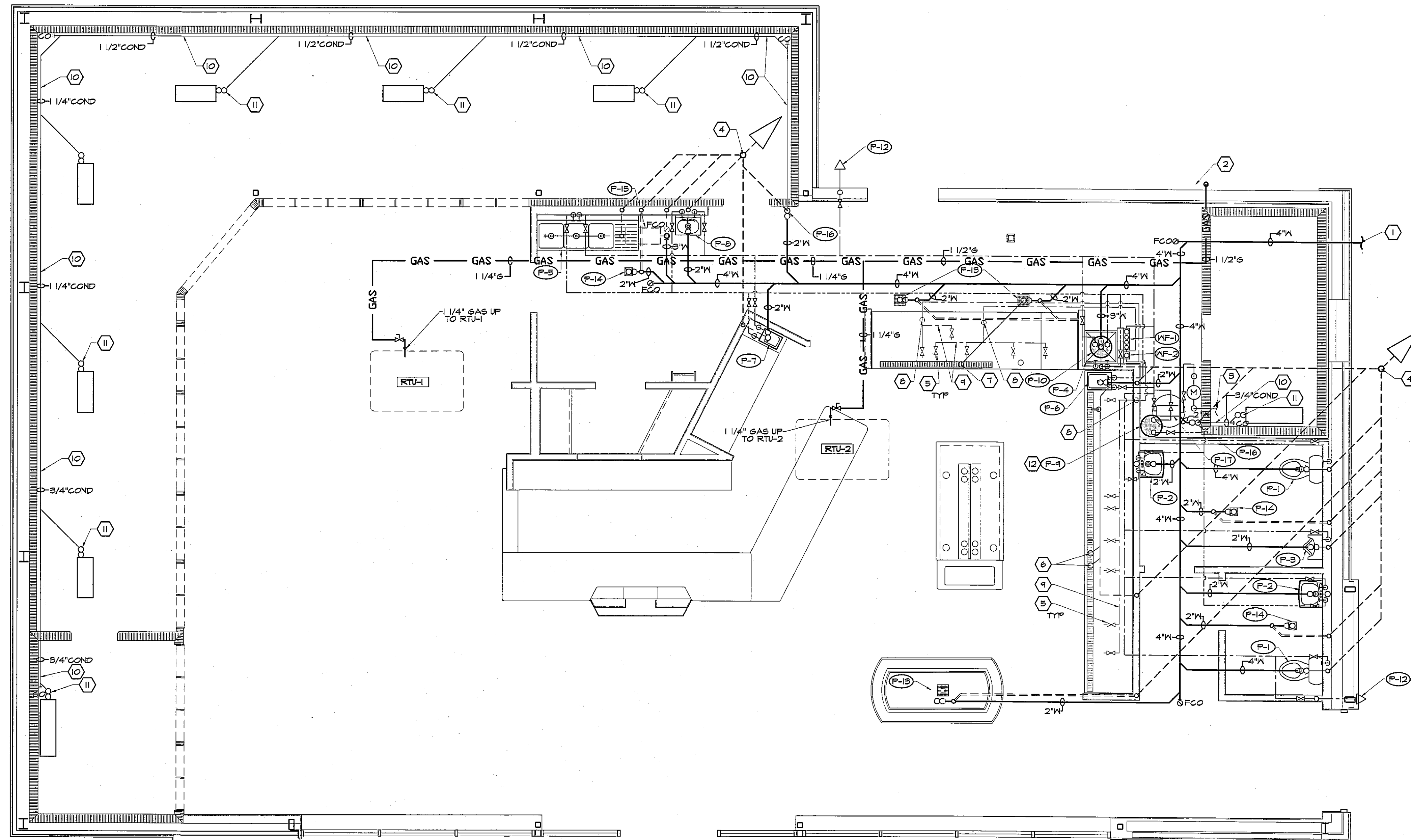
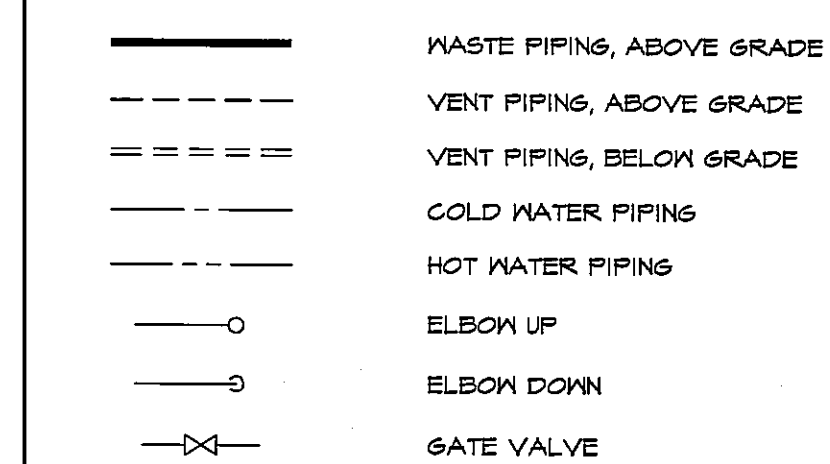
PLUMBING FIXTURE SCHEDULE

SYMBOL	DESCRIPTION	WASTE	VENT	HW	CW	REMARKS
(P-1)	WATER CLOSET	4"	2"		1"	HANDICAPPED WITH FLUSH VALVE
(P-2)	LAVATORY	1 1/4"	1 1/4"	1/2"	1/2"	
(P-3)	URINAL	2"	2"	3/4"	3/4"	
(P-4)	MOP BASIN	3"	2"	3/4"	3/4"	FLOOR MOUNTED
(P-5)	THREE-BAY SINK	2"	2"	1/2"	1/2"	
(P-6)	CUSTOMER SERVICE SINK	1 1/2"	1 1/2"	1/2"	1/2"	SELF-RIMMING
(P-7)	CASHIER AREA SINK	1 1/2"	1 1/2"	1/2"	1/2"	
(P-8)	UTILITY HAND SINK	1 1/2"	1 1/2"	1/2"	1/2"	
(P-9)	12 GAL. WATER HEATER			3/4"	3/4"	
(P-10)	40 GAL. WATER HEATER			3/4"	3/4"	
(P-11)	AUTO CONDENSATE PUMP					NOT USED
(P-12)	WALL HYDRANT			3/4"		
(P-13)	FLOOR SINK	2"	2"	1/2"		WITH TRAP PRIMER
(P-14)	FLOOR DRAIN	2"	1 1/2"	1/2"		WITH TRAP PRIMER
(P-15)	GREASE TRAP	3"	2"			PER LOCAL REQUIREMENTS
(P-16)	INDIRECT DRAIN	2"	1 1/2"			SEE DETAIL 9/P2.1
(P-17)	BOOSTER PUMP					

NOTES

- 1) PLUMBER'S WORK TO END 10' FROM THE BUILDING. ALL CONNECTIONS TO SITE UTILITY PIPING SHALL BE PROVIDED BY THE PLUMBING CONTRACTOR.
- 2) PROVIDE FLOOR CLEANOUTS AS REQUIRED AT ALL NEW UNDERSLAB PIPE LOCATION.
- 3) ALL WASTE PIPING FROM SINKS TO MAIN WASTE LINES SHALL BE COPPER WASTE PIPING.
- 4) PROVIDE P-TRAP @ CONDENSATE OUTLET OF EVAP FAN UNITS (TYP).
- 5) ALL WATER FILTER CARTRIDGES TO BE REPLACED UPON CONSTRUCTION COMPLETION.
- 7) GC TO CHECK EXIST. WATER PRESSURE ON SITE & NOTIFY CF & ARCHITECT.

PLUMBING LEGEND



AHARONIAN & ASSOCIATES INC. ARCHITECTS

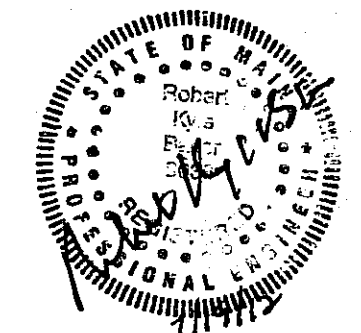
310 George Washington Highway
 Suite 100
 Smithfield, Rhode Island
 0 2 9 1 7
 T 401-232-5010
 F 401-232-5889
 WWW.ARCH-ENG.COM

DISCLAIMER

OWNERSHIP AND USE OF DOCUMENTS, DRAWINGS AND SPECIFICATIONS ARE INSTRUMENTS OF PROFESSIONAL SERVICE AND SHALL REMAIN THE PROPERTY OF THE ARCHITECT. THESE DOCUMENTS ARE NOT TO BE USED, IN WHOLE OR IN PART, FOR ANY OTHER PROJECTS OR PURPOSES OR BY ANY OTHER PARTIES THAN THOSE PROPERLY AUTHORIZED BY CONTRACT WITHOUT THE EXPRESS WRITTEN AUTHORIZATION OF THE ARCHITECT.

REVISIONS

NUMBER	REMARKS	DATE



FOR CONSTRUCTION

PROJECT TITLE

Cumberland FARMS
 100 Crossing Blvd, Framingham, Massachusetts
 STORE # 5604
 V1079

**801 WASHINGTON AVE
 PORTLAND, ME
 Cumberland County**

DRAWING TITLE

PLUMBING PLAN

DATE JULY 19, 2012	PROJ NO 11112
DRAWN BY JL	CHECKED BY AZ

DRAWING NUMBER

P1.1

1 PLUMBING PLAN
 SCALE: 1/4" = 1'-0"
 PLAN